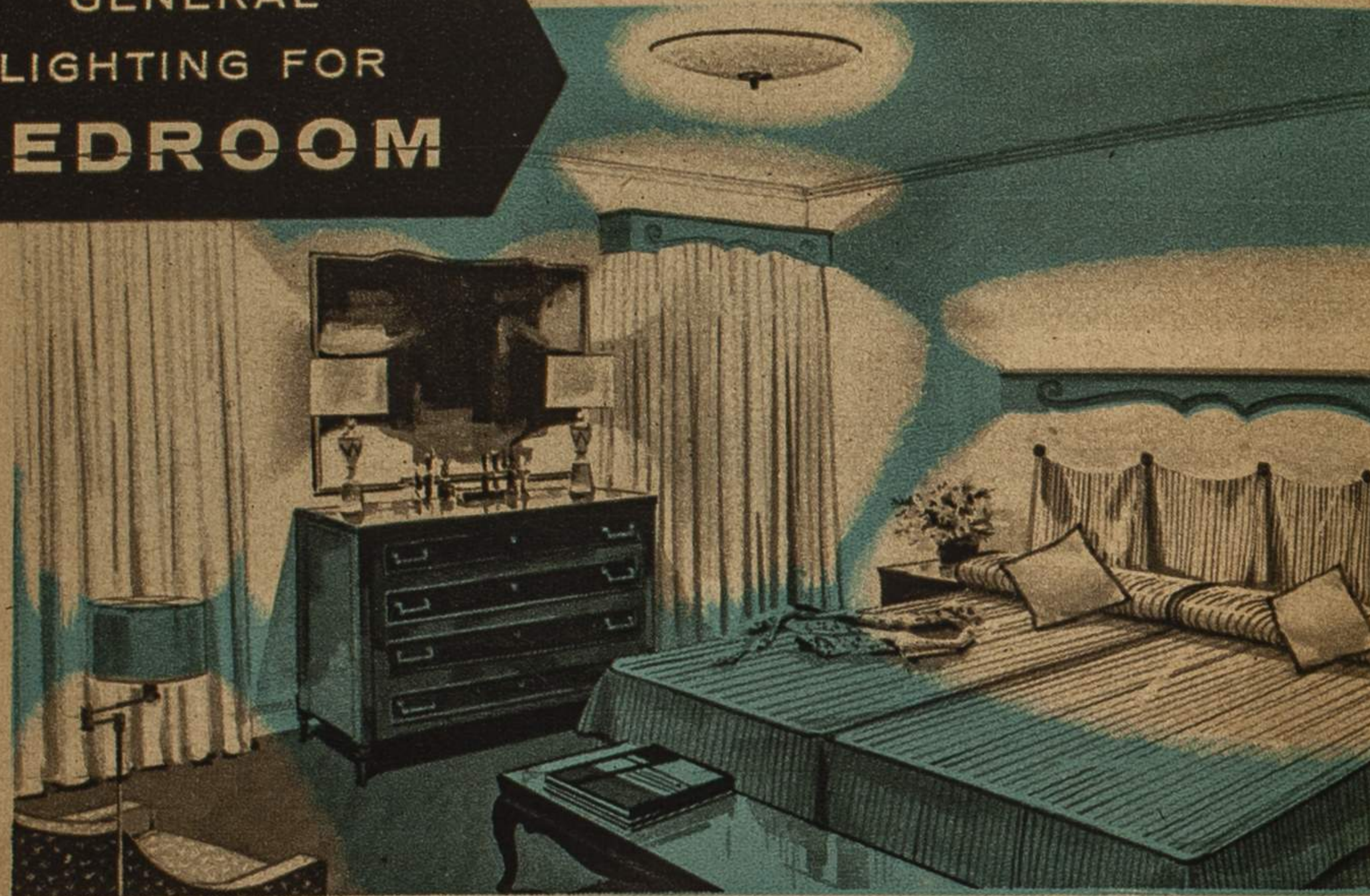


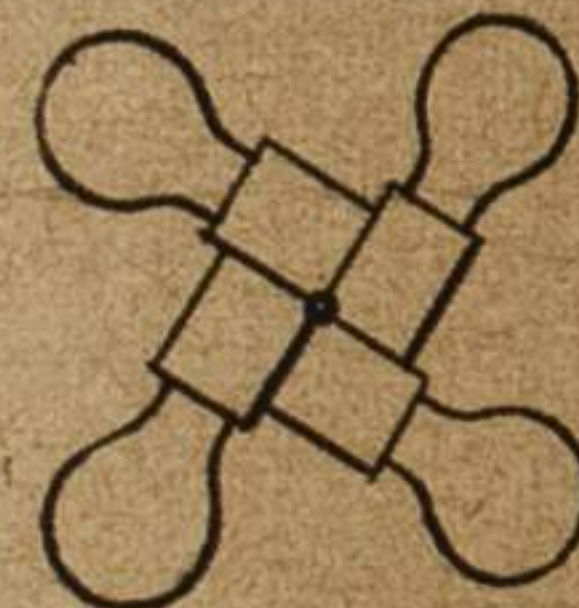
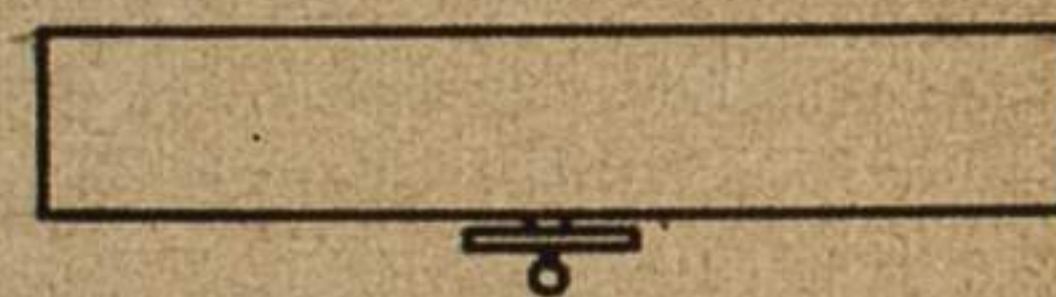
With light conditioning you "live" in your **BEDROOM**—instead of just sleeping and dressing. Combining the recipes to make the best use of space creates a relaxing, personal sitting room. You will look better and live better.

lighting recipe **BR**

GENERAL LIGHTING FOR **BEDROOM**



This recipe gives you convenient, instant lighting when you enter the room. It is an aid to good grooming, good housekeeping, and care of the sick.



Multiple lamp bulbs in a horizontal position permit the fixture to be shallow.

WHAT TO USE

A Shallow, Close-to-Ceiling Center Fixture

(Pendant fixtures are often desirable with high 9'-10' ceilings.)

SHIELDING: ceramic-enameled glass, or plastic with good diffusing qualities.

SIZE: • *Very small room* (less than 125 sq. ft.) min. 15" diameter; three 40w bulbs or one 100w bulb.

• *Average sized room* (125 to 225 sq. ft.) min. 17" diameter; four 50w bulbs or (preferable) five 40w bulbs.

• *Very large room* (over 225 sq. ft.) Omit ceiling fixture and use same wall lighting recipe as for living room.

Wall Lighting as supplement, or alternate, see opposite page.



The sitting room atmosphere is most easily captured by wall lighting. Light the draperies first, or preferably an entire window or storage wall. This forms a lovely background for a seating area, just right for conversation or watching television.

WHAT TO USE

Valance, Cornice or Wall-Bracket as illustrated on Pages 16-19, using DeLuxe Warm White tubes. (This is preferable for lighting rooms with slanted ceilings.)

• *Very small room* (less than 125 sq. ft.)

SUPPLEMENT TO CEILING FIXTURE: 36"-30w wall-bracket (min.)

ALTERNATE TO CEILING FIXTURE: 6' of wall lighting; two 36"-30w, or three 24"-20w tubes.

• *Average sized room* (from 125 to 225 sq. ft.)

SUPPLEMENT TO CEILING FIXTURE: 48"-40w tube (min.)

ALTERNATE TO CEILING FIXTURE: 8' of wall lighting; two 48"-40w.

• *Very large room* (over 225 sq. ft.) min. 16' of wall lighting—as for a living room. Plus, if desired, a decorative accent ceiling fixture (shielded bulbs).

SWITCH: If alternate is used, a wall switch is essential at entrance.

ADD A PORTABLE LAMP ENSEMBLE

The recipes you combine from the next three pages determine how effectively you use your space.

Reading in Bed: If you want more bed table space, use wall or ceiling lighting.

Make-Up: The right lamps here free the bathroom mirror. Save you steps.

Chair: The right lamp adds reading and sewing to its uses (Pages 8-12).

Desk: Make life easier by having your own spot for personal bookkeeping and correspondence. (Pages 14-15).

• Arrange the furnishings so that lighted lamps on several walls add to the room's decorative balance.

• Add decorative value by ensembling the lamps in relation to the furnishings and each other.