

MAKE-UP

It takes two to make-up. The two lamps in this recipe aid you in applying make-up smoothly and discreetly. They give you light evenly distributed to both sides of the face (at face height)—undistorted by color from the shade.

STANDING AT DRESSER



lighting recipe 16

SEATED AT DRESSING TABLE



lighting recipe 17

WHAT TO USE

Pair of Lamps with white or ivory translucent shades.

A type preferred, OR B.

BULB: 30/100w 3-Way, or 100w Soft-White (top of bulb at least 2" below shade top).

SHADE: top 7", depth 7", bottom 9", (larger preferred).

LAMP HEIGHT: Dresser Recipe 16: shade center 22" above 36" high dresser.

Dressing Table Recipe 17: shade center 15" above 30" table.

WHERE TO PLACE

Position 6" out from wall; 36" between shade centers.

DOUBLE DRESSER OR DRESSING TABLE—Select larger lamps of the A type.

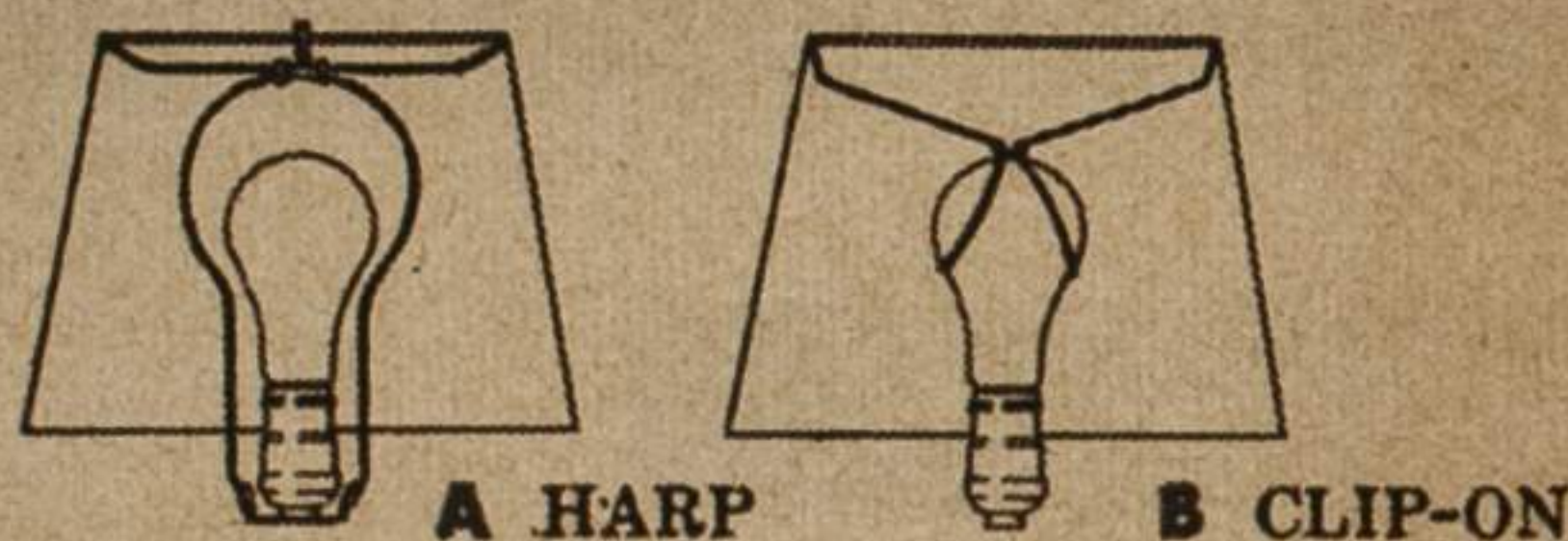
SHADES: min. 12" bottom dia. **BULB:** 50/150w 3-Way.

POSITION: up to 48" between shade centers.

WIDE MIRROR AND COUNTER—Extend a shielded DeLuxe Warm White fluorescent unit over counter. Surface mount or recess in soffit a double row of tubes to fill space. Center 15" out from wall.

Or on wall: unit with single or double row of tubes.

DESIRABLE PLUS—Add vertical fluorescent brackets each end of mirror.

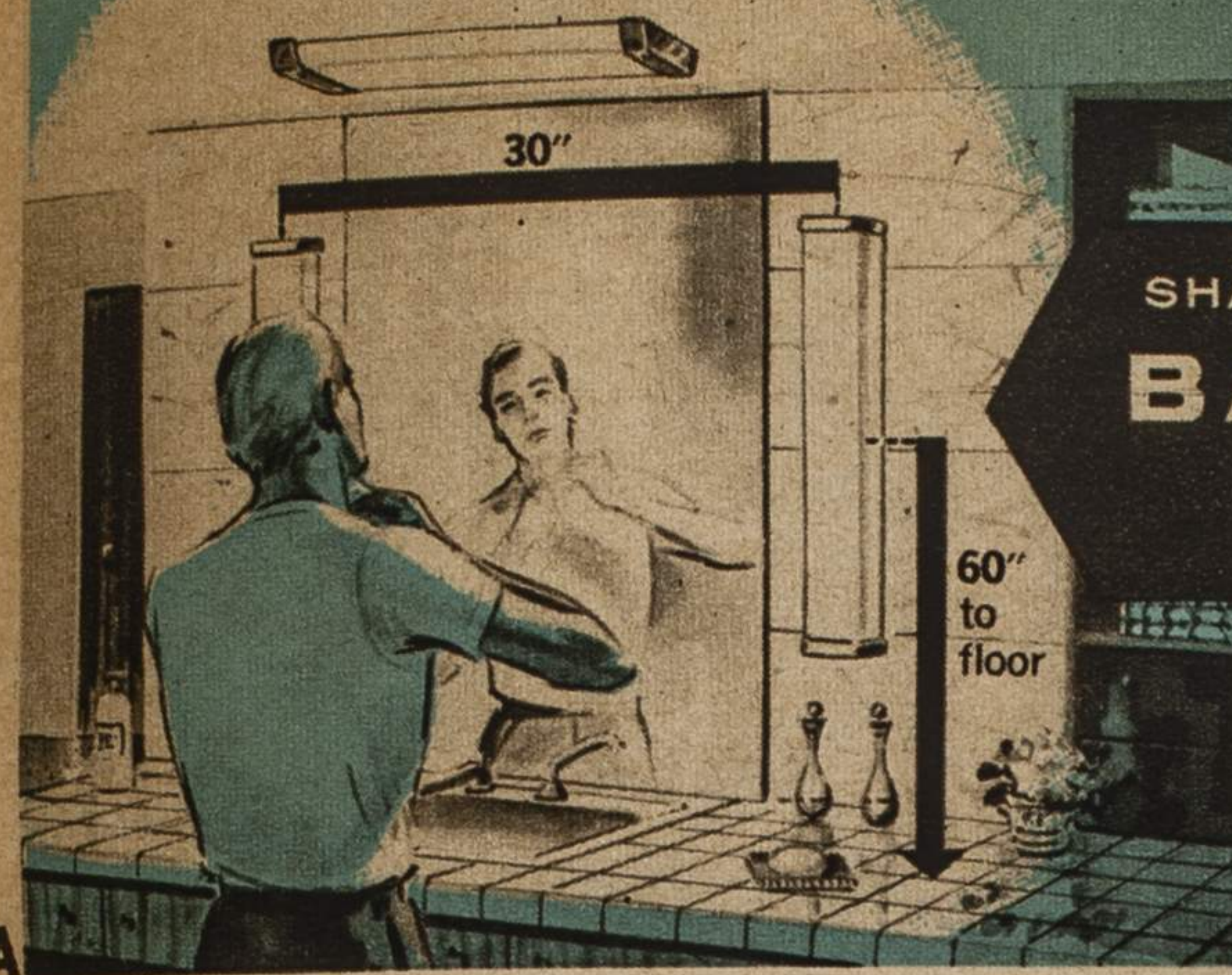


A HARP

B CLIP-ON

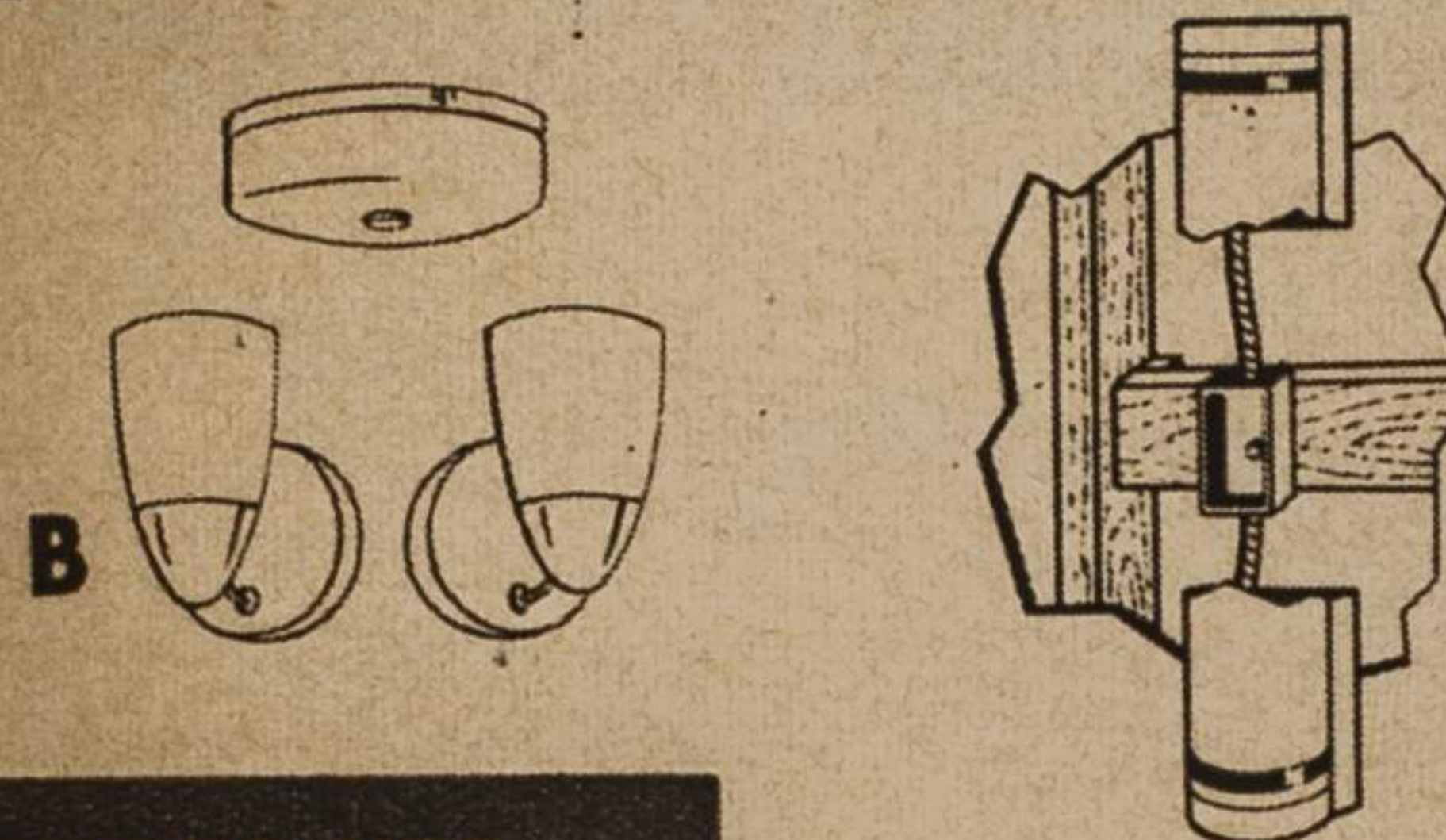
lighting recipe 18

SHAVING OR MAKE-UP AT BATHROOM MIRROR



A

This three-fixture recipe gives the right lighting for grooming, and at the same time will light the average-sized bathroom. There is ample light on top of the head, both sides of the face, and (by reflection from the washbowl) even under the chin. No shadows will interfere with a clean shave or precise make-up.



Location of 2" x 4" outlet box.

WHAT TO USE

SET OF THREE FIXTURES

A. Fluorescent: DeLuxe Warm White tubes, shielding preferable (illustrated).

Ceiling: two 18"-15w tubes, or one 32w circline.

Wall: one 24"-20w tube on each side.

TRIGGER STARTING BALLASTS available in 15w and 20w fixtures; also circlines.

OR—B. Incandescent: always shielded by opal or ceramic-enameled glassware.

Ceiling and Wall, MINIMUM: one 60w each unit; min. 6" dia. shielding on wall; 8" on ceiling. **PREFERABLE:** two-socket unit, 40w each socket. Min. length 10" or longer. Four-socket type, 25w each.

WHERE TO PLACE

Ceiling: centered with wash bowl, above front edge. (12"-18" from wall).

Wall: centered 60" above floor, 30" apart.

SWITCHING: the three units should be controlled by one wall switch.

ALSO ESSENTIAL

For Separate Compartment: wall or ceiling unit, 75w bulb, shielded.

For Shower: vapor-proof ceiling unit, 60w, switch on outside.

AND TO MAKE LIFE EVEN MORE PLEASANT

Pedicure Light: swivel unit under front of counter. R-30, 75w bulb.

Night-Lite: plastic unit with 7C7 bulb; or electroluminescent.

RS Sunlamp and Infrared Heat Lamp: timers available.