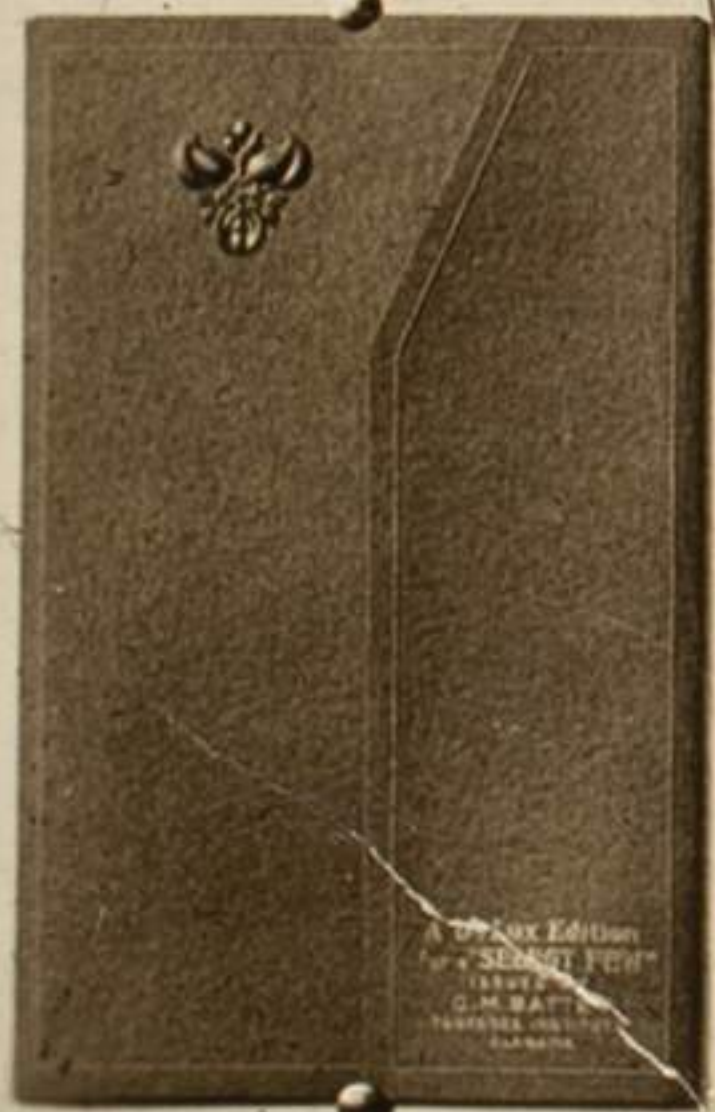


C. M. BATTY
TUSKEGEE INST., ALA.
COPYRIGHTED



A New Edition
of "SERIES FIVE"
ISSUED
C. M. BATTY
TUSKEGEE INSTITUTE
TUSKEGEE, ALA.

THIS IS THE SECOND EDITION OF A SERIES
OF PORTRAITS OF "OUR OWNERS",
A SERIES OF STUDY AIDS WHICH
WILL BE
THE "BLACK" AND THE "WHITE"
THESE ARE COMPILED THROUGH THE
IN REGULAR AND REGULAR WORKING,
THE PRICE FOR COMPLETE SET - A DOLLAR
REPRESENTATIVE. C. M. BATTY
TUSKEGEE INSTITUTE, ALA.

POST CARD

▲ A Z O ▲
A PLACE A
Z STAMP Z
O HERE O
▼ A Z O ▼

CORRESPONDENCE HERE

NAME AND ADDRESS HERE

RH
MS-P
545:1.26