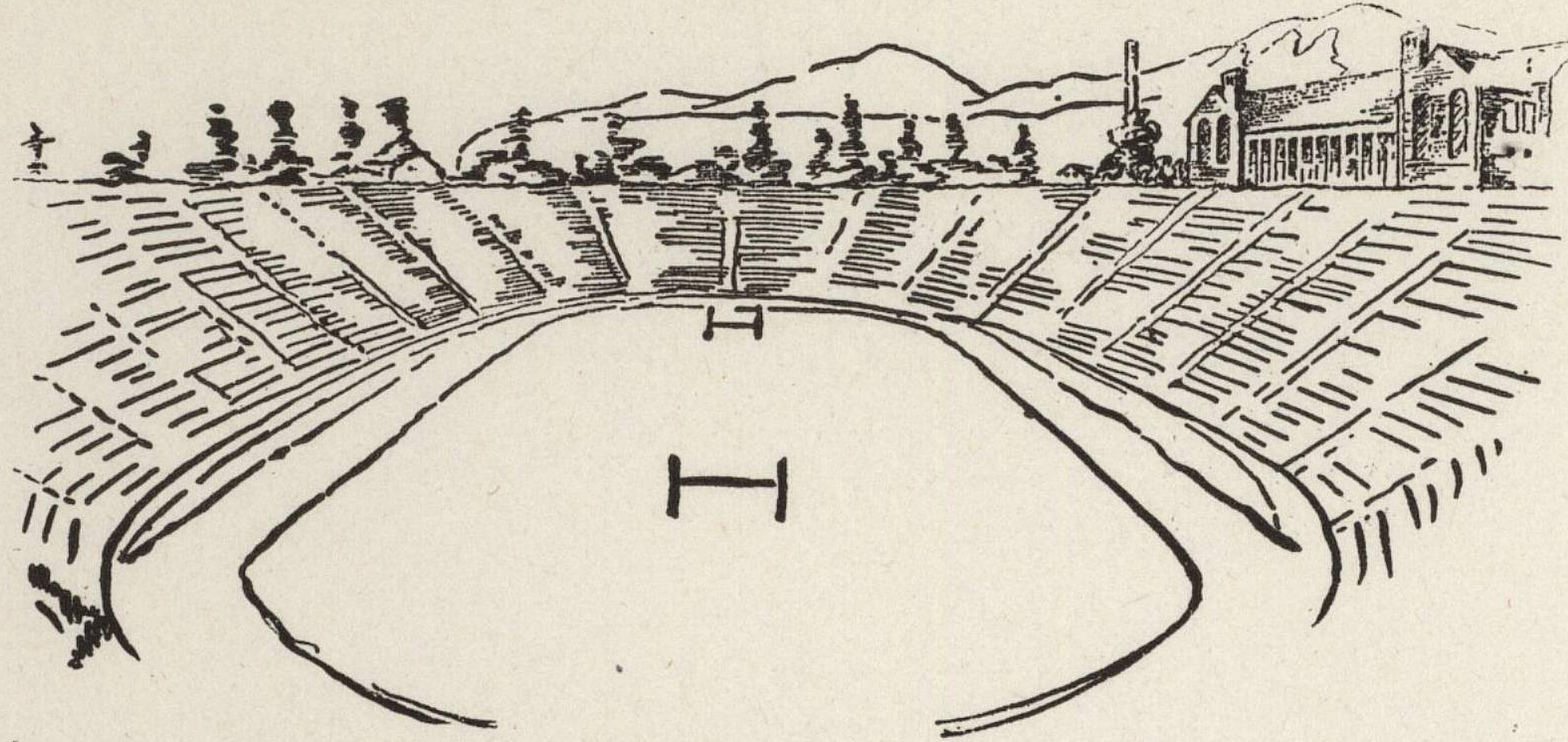


Department of Physical Education  
University of Colorado



Boulder, Colorado

November 14th,

Dear "Doc":

Just a note about our plans for trip to Kansas City.  
We will arrive Kansas City at 7.45 a.m. Dec. 22nd. We would like to  
have an opportunity to practice on hall floor around ten or eleven.

We will leave right after the game in order to meet the 48 hour  
rule. Leave K.C. at 11.30. Which game do you have us down for?  
Will you use rectangular wood, or glass backboard?

Best wishes,

*Fruity*

P.S. Do you want any material for publicity purposes, pictures ect.