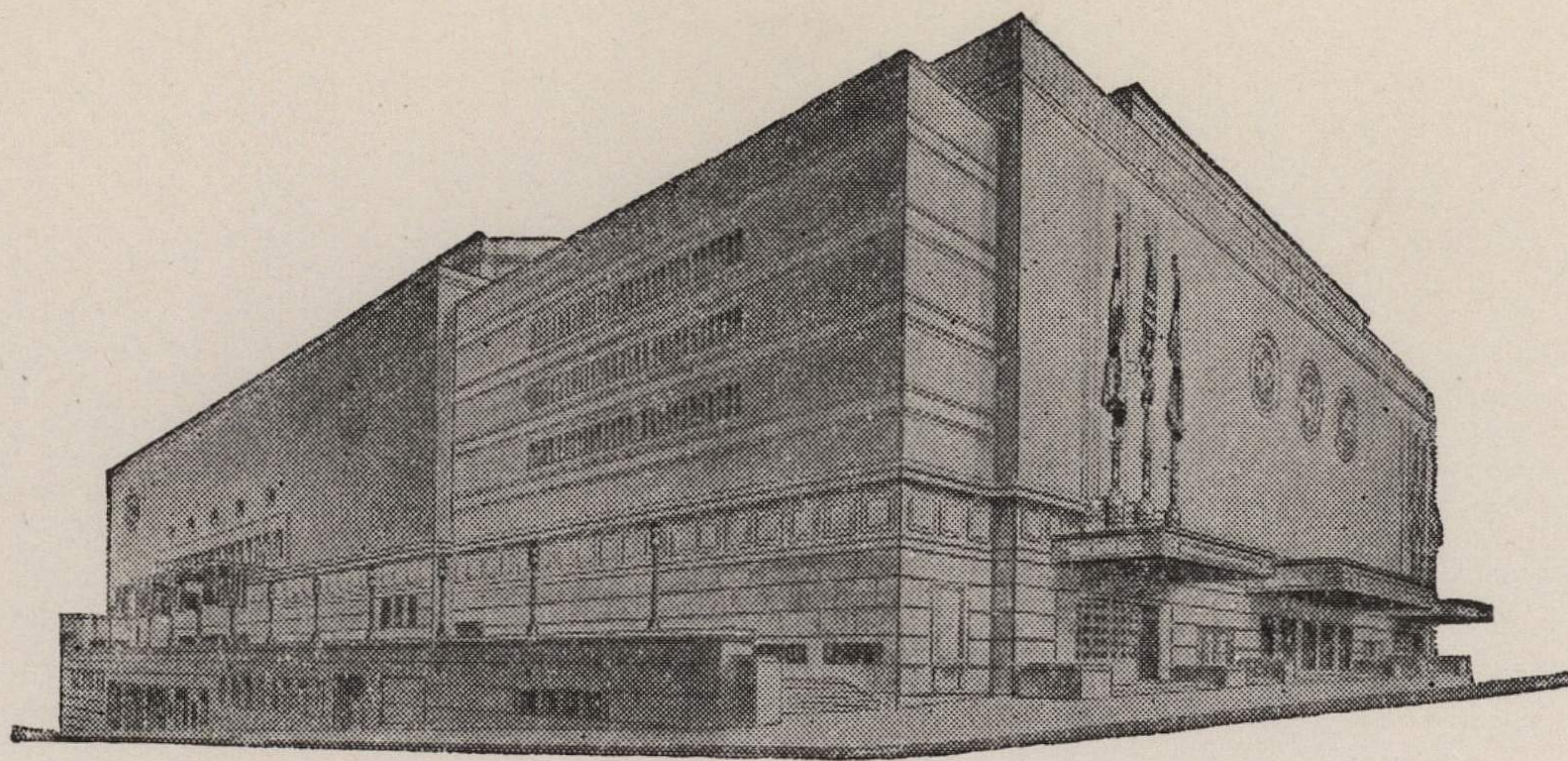


ADVISORY BOARD
JOHN C. GROVER
Chairman
FRED M. LEE
Vice-Chairman
H. E. BONING, JR.
Secretary
BARNEY L. ALLIS
HARRY M. GAMBREL
R. CROSBY KEMPER
DORMAN H. O'LEARY
HARRY H. WELSH, JR.
MARTHA FRANKLIN



MAIN ARENA
12,000 seating capacity
MUSIC HALL
2,572 seating capacity
LITTLE THEATRE
600 seating capacity
COMMITTEE ROOMS (19)
seating capacities 25 to 75

MUNICIPAL AUDITORIUM KANSAS CITY, MISSOURI

LOUIS G. LOWER, Director
C. B. HOFF, Ass't Director — JAS. H. NIXON, Treasurer

November 4, 1944.

Dr. Forrest C. Allen,
Director of Physical Education
Kansas University
Lawrence, Kansas

Dear Doc:

Received your letter regarding the tickets and price
for the Rockhurst game.

I am ordering the tickets today as you suggested.
I will get the high school tickets printed and when the coaches
come in will let them have them to sell.

Very sorry about Tom Dorney of Ward High. It was just
one of those things that happen; in fact, I don't even remember
it. This year I will talk with Tom and in some way make up
the difference of what he lost on the other sale.

I will wait until I hear from you again on the 22nd.
and 23rd. double headers and will also remember what you
wrote me "confidential".

Very sincerely yours,

Clyde M. Baker
Clyde M. Baker,
Box Office Supervisor.

CMB:eh

