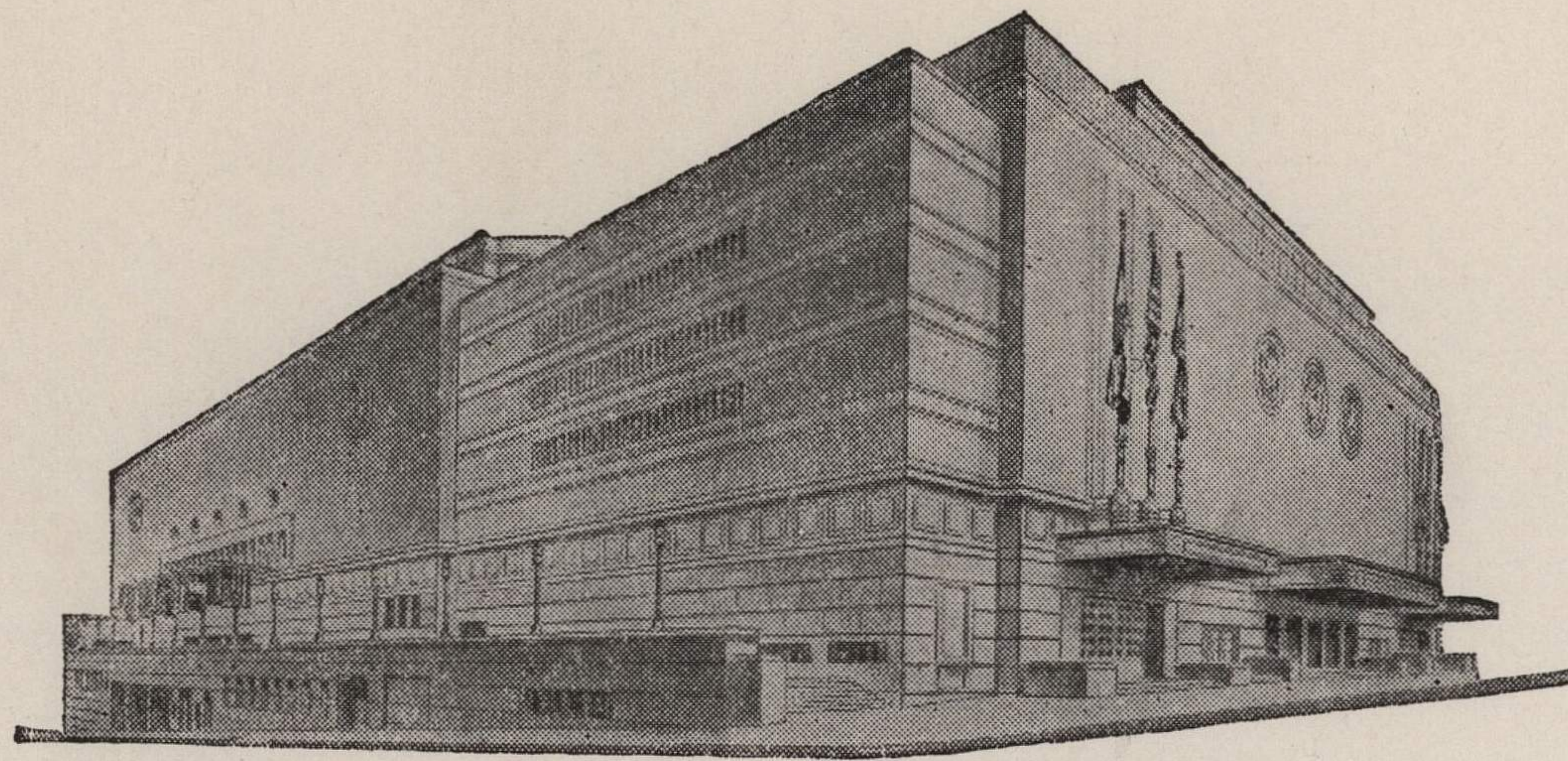


ADVISORY BOARD  
JOHN C. GROVER  
Chairman  
FRED M. LEE  
Vice-Chairman  
H. E. BONING, JR.  
Secretary  
BARNEY L. ALLIS  
HARRY M. GAMBREL  
R. CROSBY KEMPER  
DORMAN H. O'LEARY  
HARRY H. WELSH, JR.  
MARTHA FRANKLIN



MAIN ARENA  
12,000 seating capacity  
MUSIC HALL  
2,572 seating capacity  
LITTLE THEATRE  
600 seating capacity  
COMMITTEE ROOMS (19)  
seating capacities 25 to 75

## MUNICIPAL AUDITORIUM KANSAS CITY, MISSOURI

LOUIS G. LOWER, Director  
C. B. HOFF, Ass't Director — JAS. H. NIXON, Treasurer

Oct. 27, 1944.

Dr. Forrest C. Allen  
Director of Physical Education  
University of Kansas  
Lawrence, Kansas

Dear Doctor:

I am returning the two (2) contracts for Basketball which will be held in the Arena on December 12th, 22nd. and 23rd.

I have discussed the date of December 16th with Reaves Peters and he is taking it up with Bruce Drake this week to get a final decision on the teams.

I wish to thank you and Mr. Earl Falkenberg for giving me the privilege of seeing the Kansas Jayhawks beat the Nebraska boys last Saturday afternoon. It was a beautiful day and I enjoyed the game all the way through.

Yours truly,

*Clarence*  
Clarence B. Hoff,  
Director.

CBH:EH  
Enc: 2

