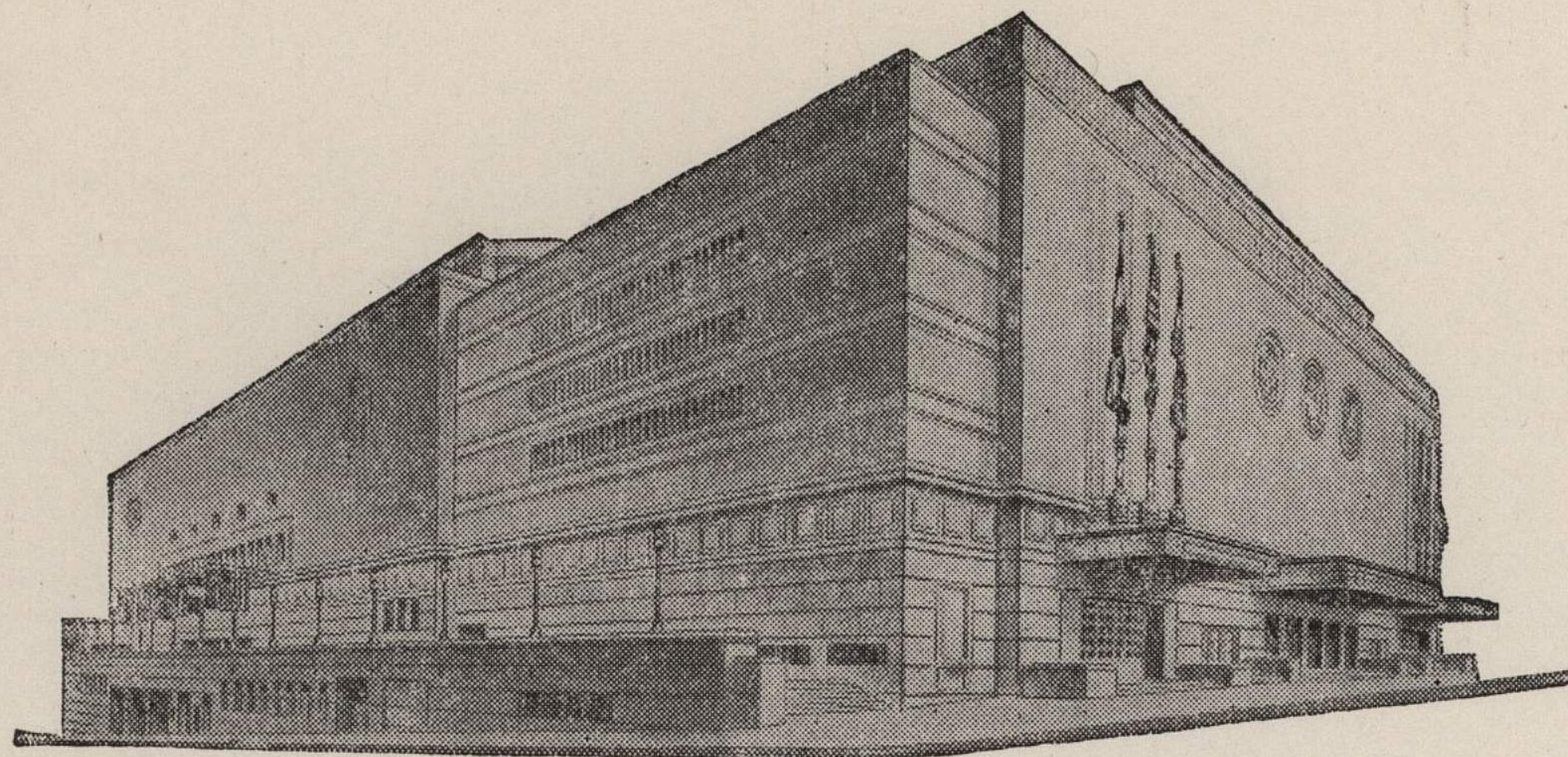


ADVISORY BOARD

JOHN C. GROVER
Chairman
FRED M. LEE
Vice-Chairman
H. E. BONING, JR.
Secretary
BARNEY L. ALLIS
HARRY M. GAMBREL
R. CROSBY KEMPER
DORMAN H. O'LEARY
HARRY H. WELSH, JR.
MARTHA FRANKLIN



MAIN ARENA
12,000 seating capacity

MUSIC HALL
2,572 seating capacity

LITTLE THEATRE
600 seating capacity

COMMITTEE ROOMS (19)
seating capacities 25 to 75

MUNICIPAL AUDITORIUM

KANSAS CITY, MISSOURI

LOUIS G. LOWER, Director
C. B. HOFF, Ass't Director — JAS. H. NIXON, Treasurer

October 23, 1944

Dr. F. C. Allen,
Director of Physical Education,
University of Kansas,
Lawrence Kans.

Dear Dr. Allen:

Enclosed are the contracts for the rental of the Arena,
December 12, for your basketball games.

Please sign both copies of contracts and return them to this office at
your earliest convenience, then the Director, Mr. C. B. Hoff, will sign
your copy of the contract and it will be returned to you immediately.

If we can be of further service, please advise.

Respectfully yours,

Herschell C. Weiss

Herschell C. Weiss,
Booking Clerk.

Also enclosing contracts for dates of December 22 & 23, 1944

