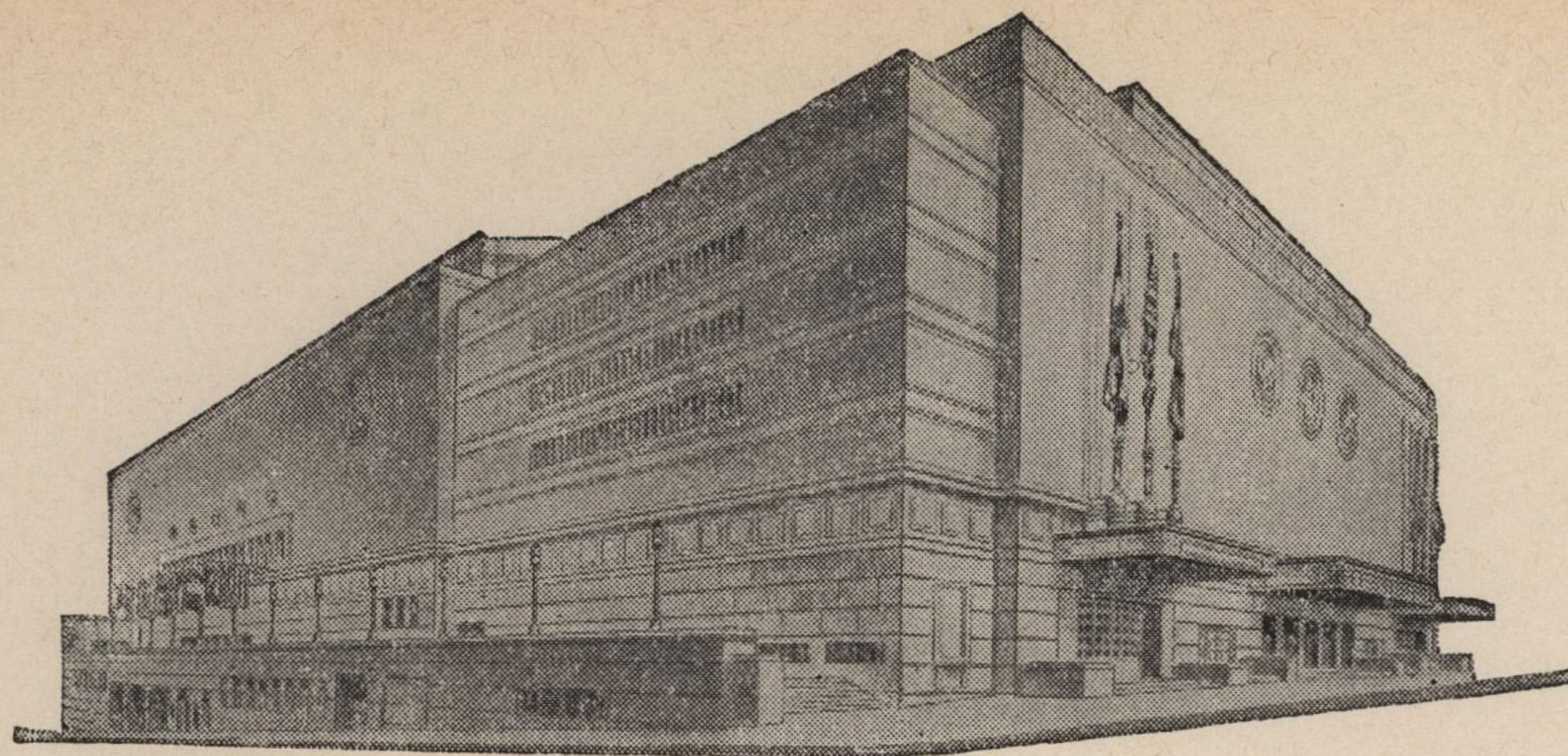


ADVISORY BOARD
JOHN C. GROVER
Chairman
FRED M. LEE
Vice-Chairman
H. E. BONING, JR.
Secretary
BARNEY L. ALLIS
HARRY M. GAMBREL
R. CROSBY KEMPER
DORMAN H. O'LEARY
HARRY H. WELSH, JR.
MARTHA FRANKLIN



MAIN ARENA
12,000 seating capacity
MUSIC HALL
2,572 seating capacity
LITTLE THEATRE
600 seating capacity
COMMITTEE ROOMS (19)
seating capacities 25 to 75

MUNICIPAL AUDITORIUM KANSAS CITY, MISSOURI

~~JOHN C. GROVER, Director~~
C. B. HOFF, ~~Asst~~ Director — ~~JACK HINKLE, Treasurer~~

August 18, 1943.

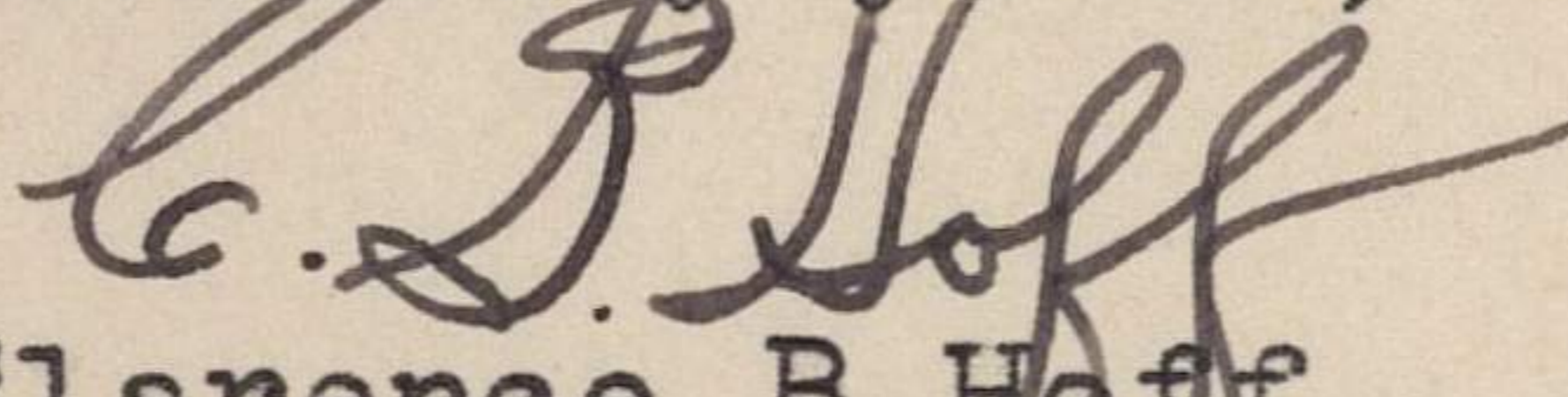
Dr. Forrest C. Allen
University of Kansas
Lawrence, Kansas

Dear Dr. Allen:

I want to thank you for sending me a copy of your letter written to Lt. Paul D. Hinkle, U.S. Naval Training Station, Great Lakes, Illinois. So far, I have not heard from the Lieutenant regarding the dates which we mentioned. I was wondering if you had received any word from him as to any dates which are under discussion at the present time.

I hope that in making this change of date that it will not prevent your team meeting the sailors here in Kansas City sometime in February. With best regards, I remain

Sincerely yours,


Clarence B. Hoff,
Director.

CBH:EH

