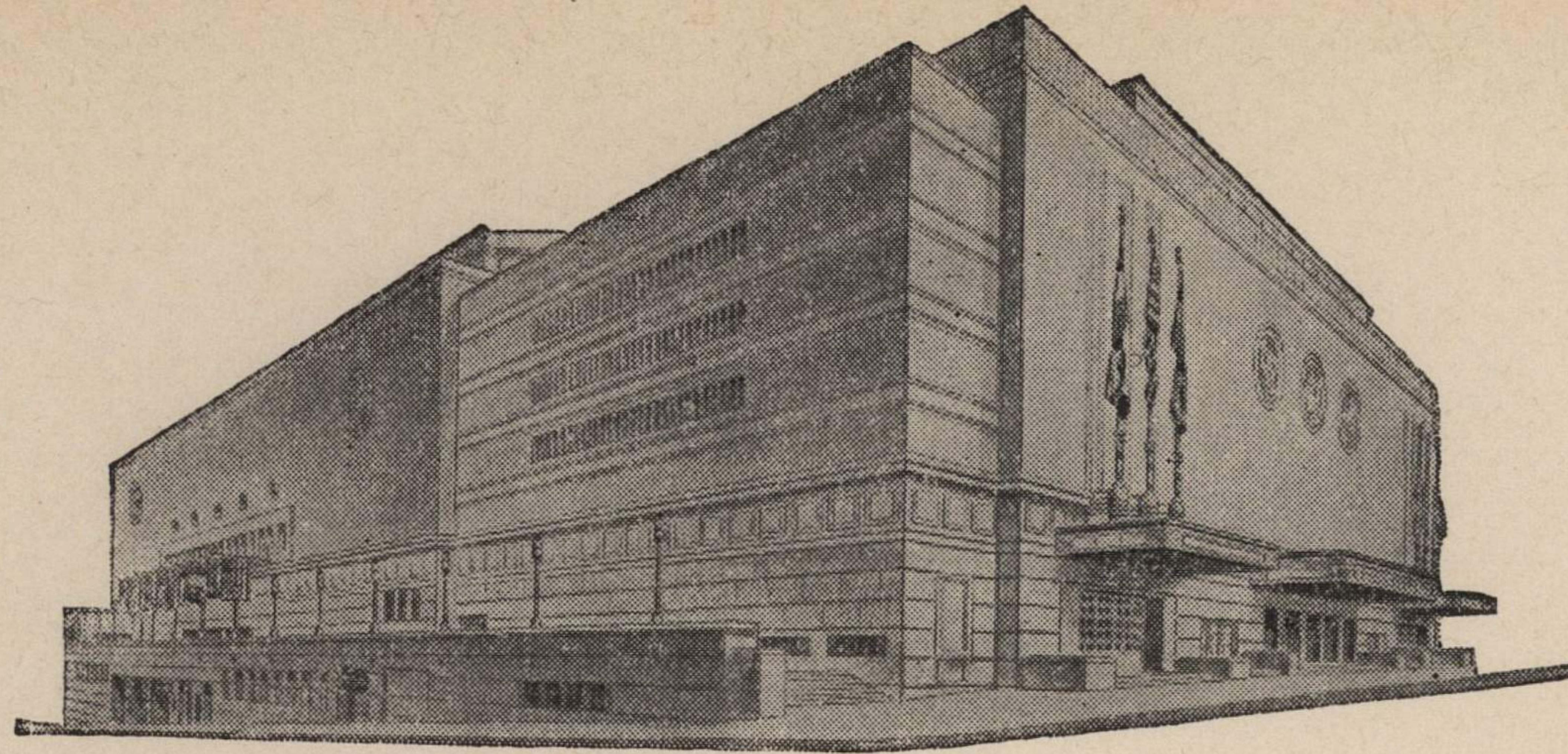


ADVISORY BOARD  
JOHN C. GROVER  
Chairman  
FRED M. LEE  
Vice-Chairman  
H. E. BONING, JR.  
Secretary  
BARNEY L. ALLIS  
HARRY M. GAMBREL  
R. CROSBY KEMPER  
DORMAN H. O'LEARY  
HARRY H. WELSH, JR.  
MARTHA FRANKLIN



MAIN ARENA  
12,000 seating capacity  
MUSIC HALL  
2,572 seating capacity  
LITTLE THEATRE  
600 seating capacity  
COMMITTEE ROOMS (19)  
seating capacities 25 to 75

## MUNICIPAL AUDITORIUM KANSAS CITY, MISSOURI

LOUIS G. LOWER, Director  
C. B. HOFF, Ass't Director — JAS. H. NIXON, Treasurer

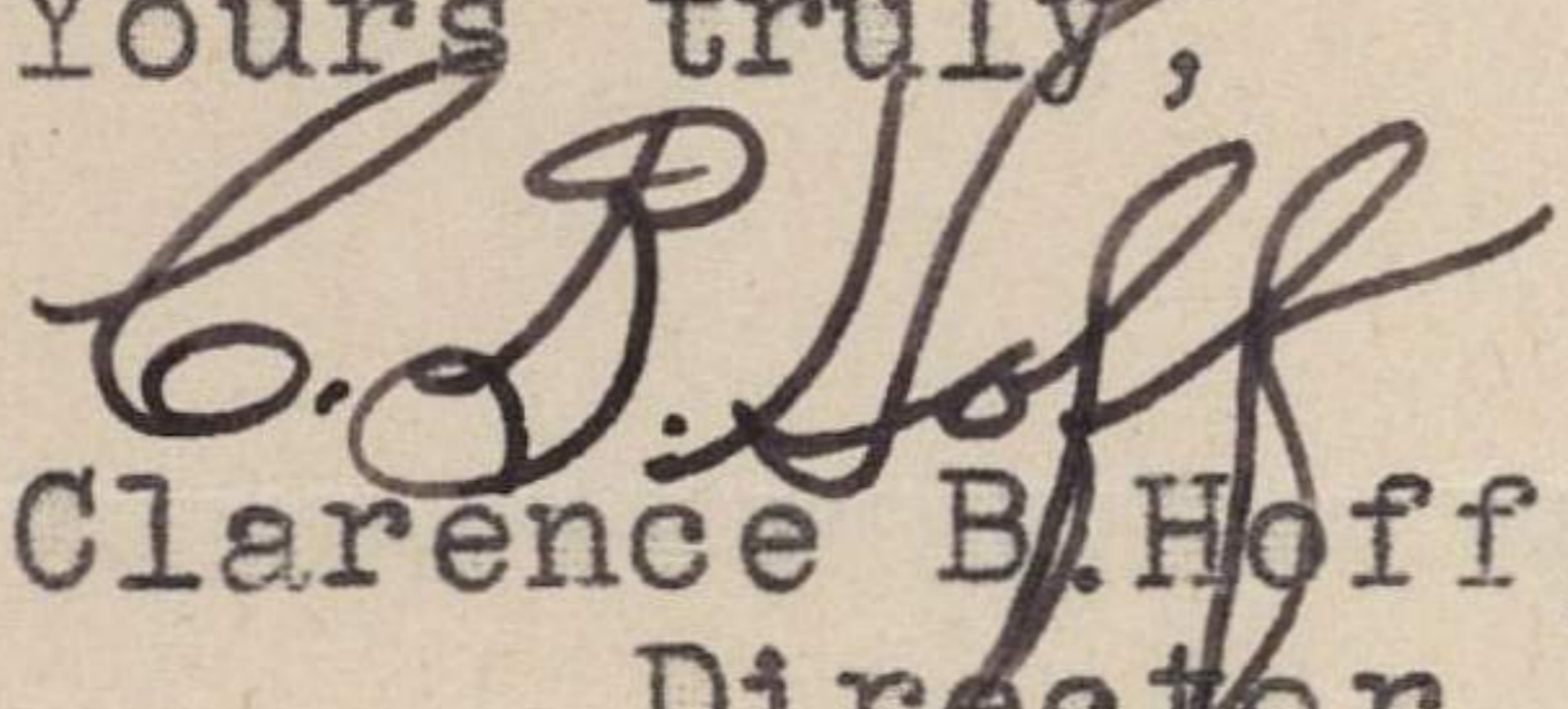
August 27, 1943.

Dr. Forrest C. Allen  
University of Kansas  
Lawrence, Kansas

Dear Dr. Allen:

I regret that you feel as you do regarding the situation that came up on our basketball date. However, I would like for you to understand that income, from a convention of the type which I mentioned, is absolutely nothing. We merely put this convention on as a civic service and the Auditorium pays the bills. This is one of my duties as Director and when such conflicting dates occur there is nothing much more I can do then try to make satisfactory arrangements with all concerned.

I have talked with the International Secretary of the Boilermakers Union and have arranged to have the convention move out of the Arena early enough Saturday afternoon, February 5th, to assure you that the court will be in readiness for the K.U.-Great Lakes game on scheduled time, so you may continue your schedule as previously arranged.

Yours truly,  
  
Clarence B. Hoff,  
Director.

CBH:EH  
CC: Lt. Paul D. Hinkle.

