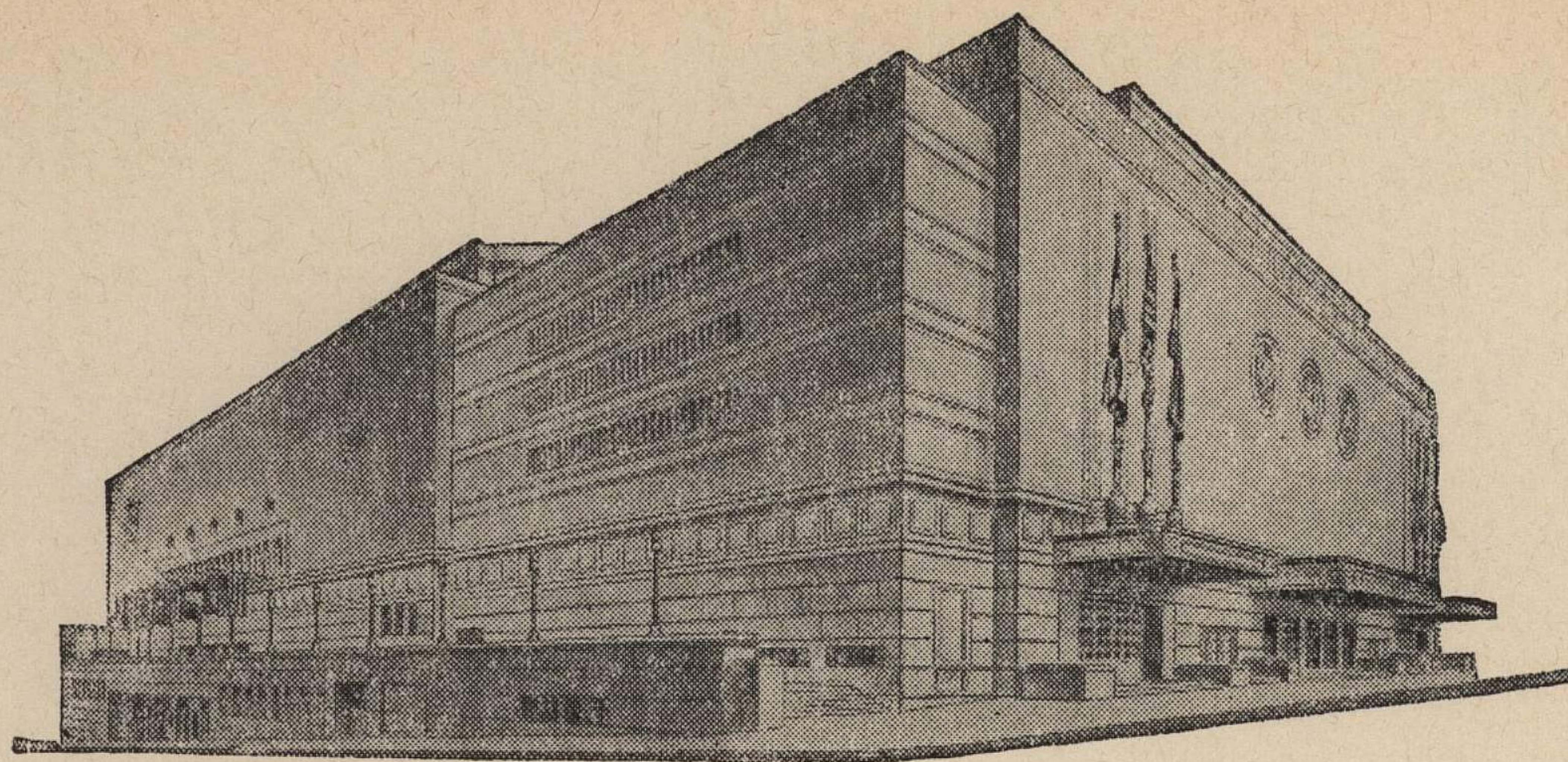


ADVISORY BOARD
JOHN C. GROVER
Chairman
FRED M. LEE
Vice-Chairman
H. E. BONING, JR.
Secretary
BARNEY L. ALLIS
HARRY M. GAMBREL
R. CROSBY KEMPER
DORMAN H. O'LEARY
HARRY H. WELSH, JR.
MARTHA FRANKLIN



MAIN ARENA
12,000 seating capacity
MUSIC HALL
2,572 seating capacity
LITTLE THEATRE
600 seating capacity
COMMITTEE ROOMS (19)
seating capacities 25 to 75

MUNICIPAL AUDITORIUM KANSAS CITY, MISSOURI

LOUIS G. LOWER, Director
C. B. HOFF, Asst. Director — JAS. H. NIXON, Treasurer

July 29, 1943.

Dr. "Phog" Allen
University of Kansas
Lawrence, Kansas

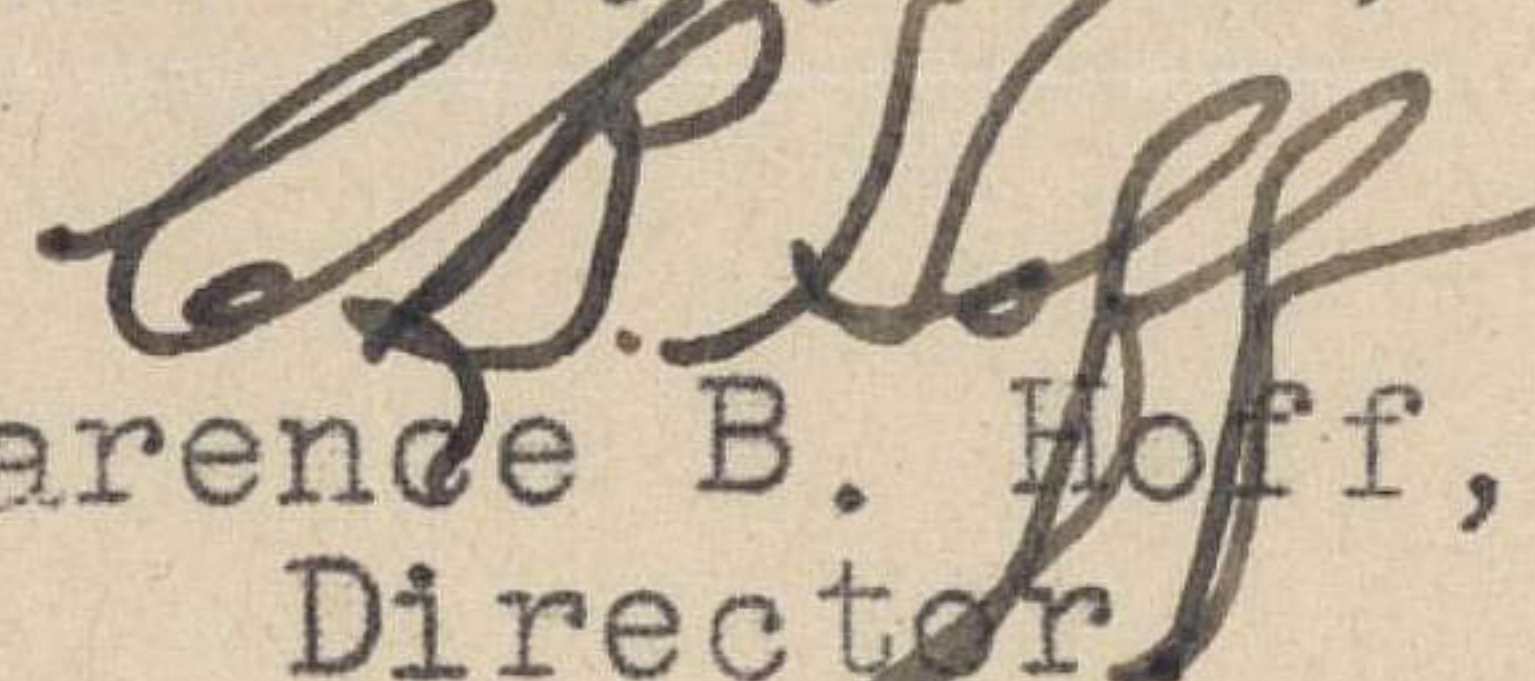
Dear "Phog":

I notice in our date book that Mr. Lower has put a "hold" on Saturday, February 5, 1944 as a date for the basketball game between the Great Lakes Naval Team and the Kansas University Team. I hope that nothing has been done other than to hold this date as we have booked in the International Brotherhood of Boilermakers and Shipbuilders Convention for the period starting January 31st up to and including February 12th, 1944.

If there are any other dates, before or after, that you can use, I will be glad to put a "hold" on them at the present time and await word from you as to the final arrangements. I hope this change of date has not inconvenienced you or the commander of the naval base.

With best regards, I am

Sincerely yours,


Clarence B. Hoff,
Director

CBH:EH

