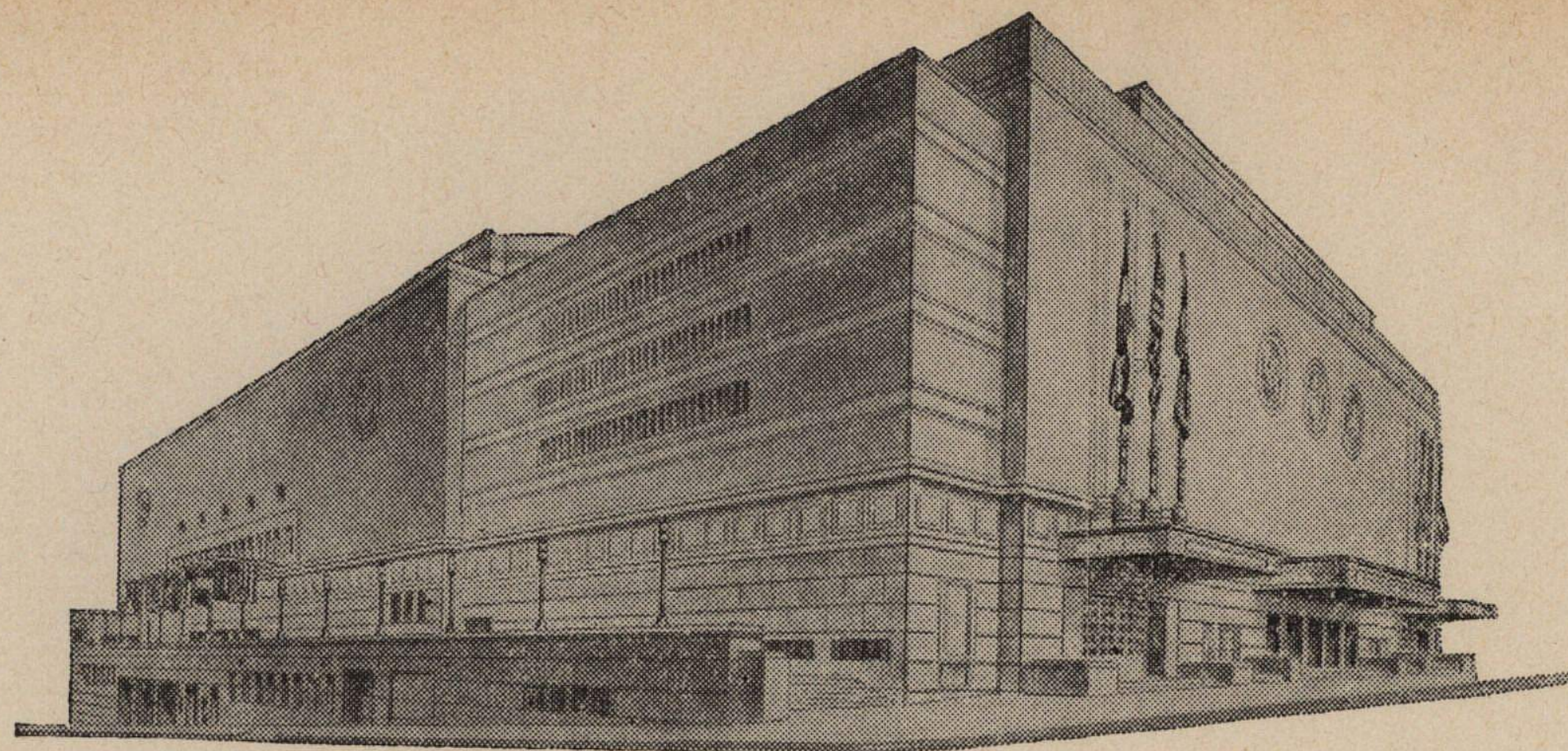


ADVISORY BOARD
FRED G. BUFFE
Chairman
JOHN C. GROVER
Vice-Chairman
H. E. BONING, JR.
Secretary
BARNEY L. ALLIS
HARRY M. GAMBREL
R. CROSBY KEMPER
FRED M. LEE
DORMAN H. O'LEARY
HARRY H. WELSH, JR.



MAIN ARENA
12,000 seating capacity
MUSIC HALL
2,572 seating capacity
LITTLE THEATRE
600 seating capacity
EXHIBITION HALL
120,000 square feet
COMMITTEE ROOMS (23)
seating capacities 25 to 500

MUNICIPAL AUDITORIUM

KANSAS CITY, MISSOURI

LOUIS G. LOWER, Director
C. B. HOFF, Ass't Director

November 29, 1943.

Dr. Forrest C. Allen
Kansas University
Lawrence, Kansas

Dear "Phog":

I notice your schedule of basketball games for this season in yesterday's paper, but the game between the Jayhawks and the Seahawks scheduled for Saturday, February 5th was not included in this list.

I have been holding this date for you and I wish you would let me know immediately if this has been cancelled.

Yours truly,

Clarence B. Hoff,
Director.

CBH:EH

