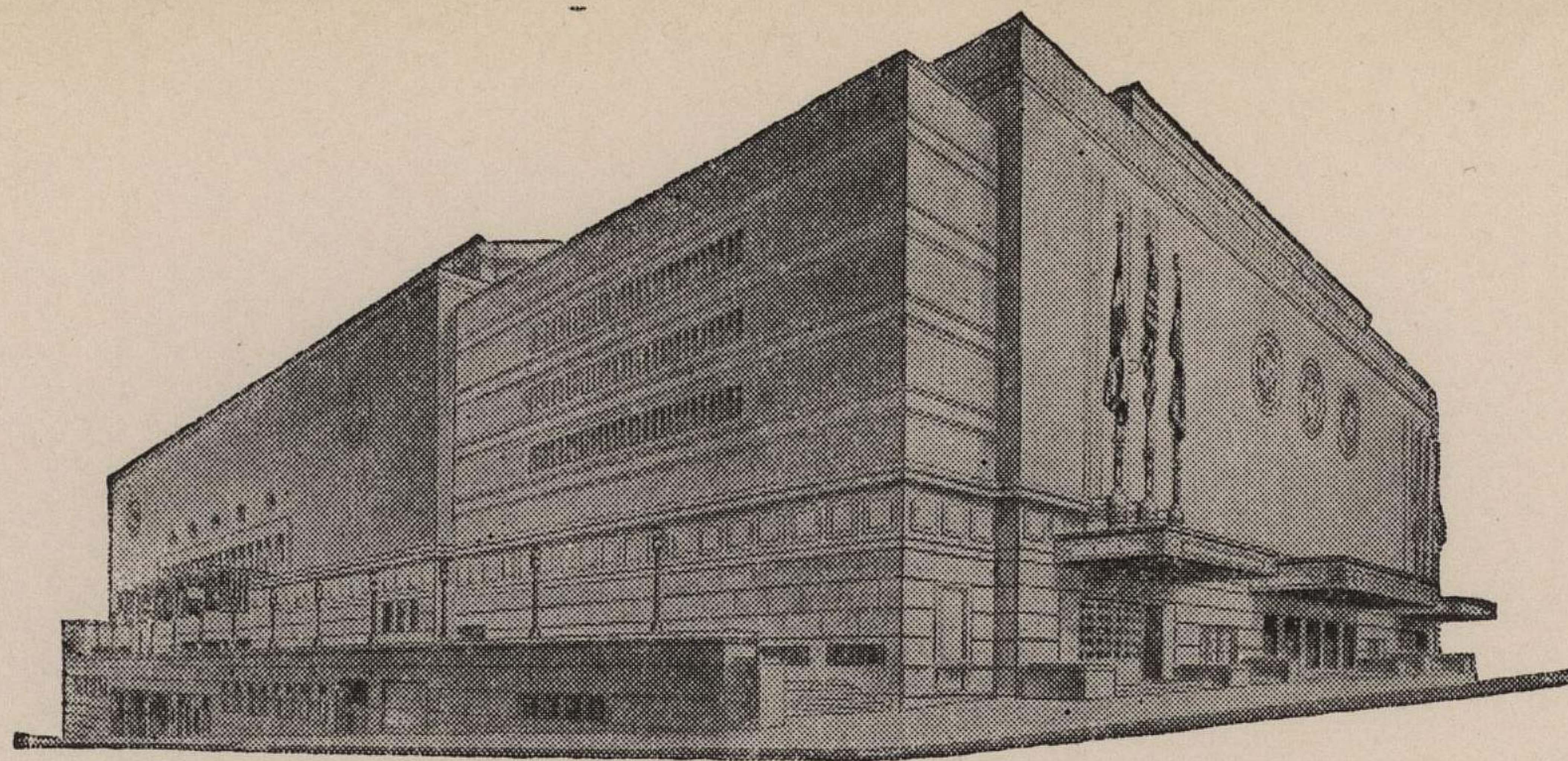


ADVISORY BOARD
JOHN C. GROVER
Chairman
FRED M. LEE
Vice-Chairman
H. E. BONING, JR.
Secretary
BARNEY L. ALLIS
HARRY M. GAMBREL
R. CROSBY KEMPER
DORMAN H. O'LEARY
HARRY H. WELSH, JR.
MARTHA FRANKLIN



MAIN ARENA
12,000 seating capacity
MUSIC HALL
2,572 seating capacity
LITTLE THEATRE
600 seating capacity
COMMITTEE ROOMS (19)
seating capacities 25 to 75

MUNICIPAL AUDITORIUM KANSAS CITY, MISSOURI

LOUIS G. TOWER, Director
C. B. HOFF, Ass't Director — JAS. H. NIXON, Treasurer

October 25, 1943.

Dr. F. C. Allen
University of Kansas
Lawrence, Kansas

Dear Doc:

Jim Nixon has just told me that he has been in touch with you regarding the Saturday, December 18th and that you had told him that your game with Oklahoma was doubtful.

Nixon is anxious to bring in a show on that night and if you have decided that you do not want that date I will be able to turn it over Jim; however, I will hold it for you if you still want it. I would appreciate it if you will call me, collect, when you receive this letter.

Yours truly,

Clarence
Clarence B. Hoff,
Director.

CBH:eh

