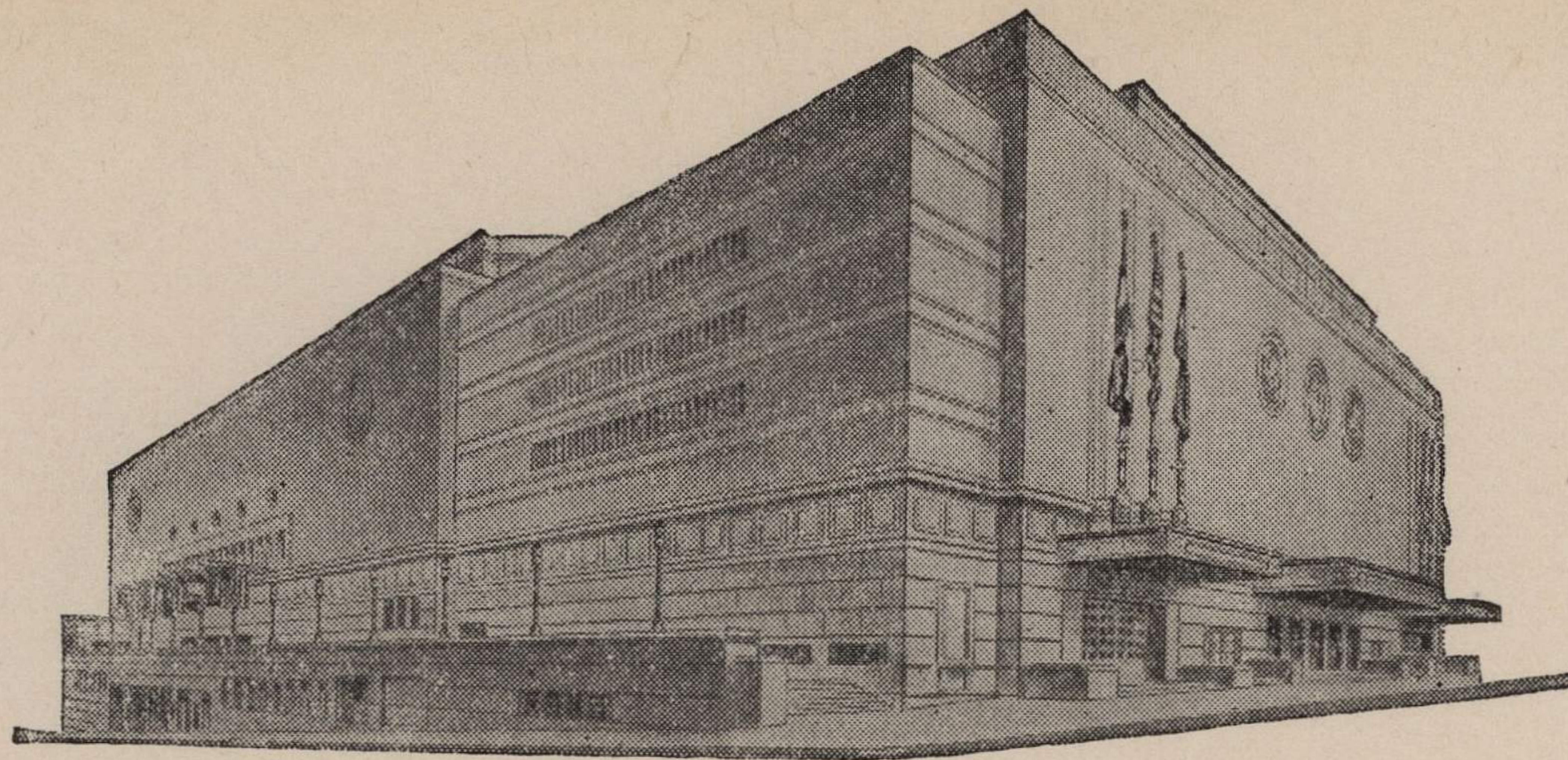


ADVISORY BOARD
JOHN C. GROVER
Chairman
FRED M. LEE
Vice-Chairman
H. E. BONING, JR.
Secretary
BARNEY L. ALLIS
HARRY M. GAMBREL
R. CROSBY KEMPER
DORMAN H. O'LEARY
HARRY H. WELSH, JR.
MARTHA FRANKLIN



MAIN ARENA
12,000 seating capacity
MUSIC HALL
2,572 seating capacity
LITTLE THEATRE
600 seating capacity
COMMITTEE ROOMS (19)
seating capacities 25 to 75

MUNICIPAL AUDITORIUM KANSAS CITY, MISSOURI

LOUIS G. LOWER, Director
C. B. HOFF, Asst Director — JAS. H. NIXON, Treasurer

Sept. 30, 1943.

Dr. Forrest C. Allen
University of Kansas
Lawrence, Kansas

Dear Phog:

I have just finished talking with Lou Lane, the Coach at Rockhurst, and he tells me that he is working on a basketball team and it is his hope that he can combine the college students with the service training students in order to have a much better team than he could get out of his class alone.

At the present time, I am holding Saturday, December 11th and Saturday, December 18th for you. When Reaves Peters called me regarding December 10th, I was trying to trade a date in order to make a combination of December 10th and December 11th but I was unable to make the deal, so December 11th stands alone.

I have the Boy Scouts Cub Show scheduled for Friday, December 3rd and Saturday, December 4th, but these dates have not been confirmed as yet. There was some doubt as to whether they would go through with this Cub Show, so I am unable to tell you definitely whether you can have those dates or not.

We are booked up so closely for the last half of November and the first part of December and it is hard to find two consecutive days available. I believe that Kansas University and others of the Big Six will be sure to draw a crowd, so I am for any game that you can use on the above dates.

Yours truly,

Clarence
Clarence B. Hoff,
Director.

GBH:EH

