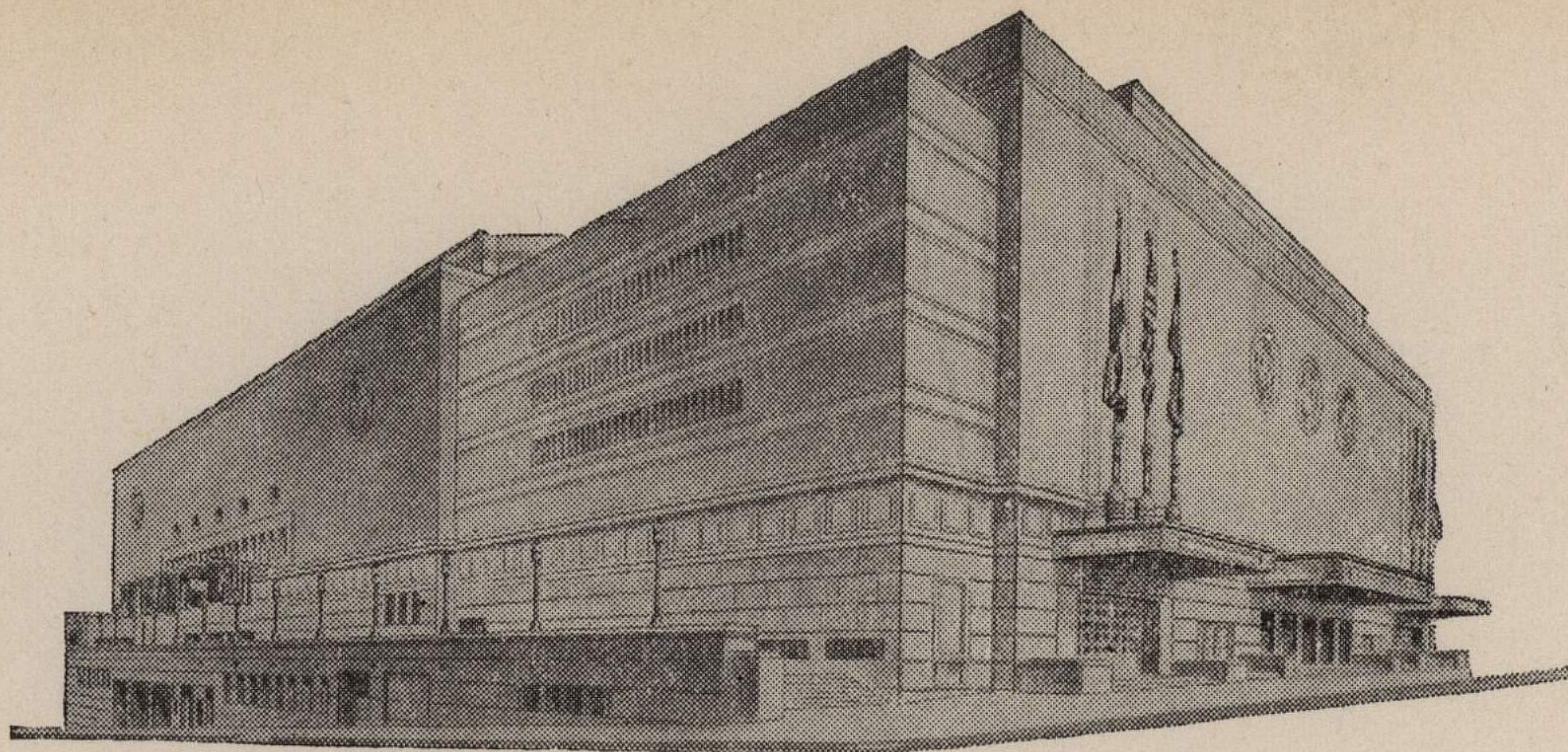


ADVISORY BOARD

FRED G. BUFFE
Chairman
JOHN C. GROVER
Vice-Chairman
H. E. BONING, JR.
Secretary
BARNEY L. ALLIS
HARRY M. GAMBREL
R. CROSBY KEMPER
FRED M. LEE
DORMAN H. O'LEARY
HARRY H. WELSH, JR.



MAIN ARENA
12,000 seating capacity
MUSIC HALL
2,572 seating capacity
LITTLE THEATRE
600 seating capacity
EXHIBITION HALL
120,000 square feet
COMMITTEE ROOMS (23)
seating capacities 25 to 500

MUNICIPAL AUDITORIUM

KANSAS CITY, MISSOURI

-LOUIS G. LOWER, Director
C. B. HOFF, Ass't Director

October 18, 1943.

Dr. F. C. Allen
University of Kansas
Lawrence, Kansas

Dear Doc:

I hope I won't disappoint you when I tell you that the Boy Scout Cub Show will be using their December 4th date so it will be impossible for you to have a basketball game that week end.

When I wrote you on September 30th, the polio epidemic was on and it was my belief that they might not want the Cub Show held this year; however, the sickness seems to have cleared so they will go ahead with their usual schedule.

Here are the dates that I can give you between December 4th and December 30th. As you know, we are holding Saturday, December 11th and December 18th for you now. We can give you Tuesday, December 14th; Tuesday, December 28; Wednesday, December 29; Thursday, December 30th. If you can use them please let me know. These are the only open dates which we now have.

With best regards, I am

Sincerely yours,

Clarence
Clarence B. Hoff,
Director.

CBH:EH

