

SELECTING THE PROPER MATERIALS

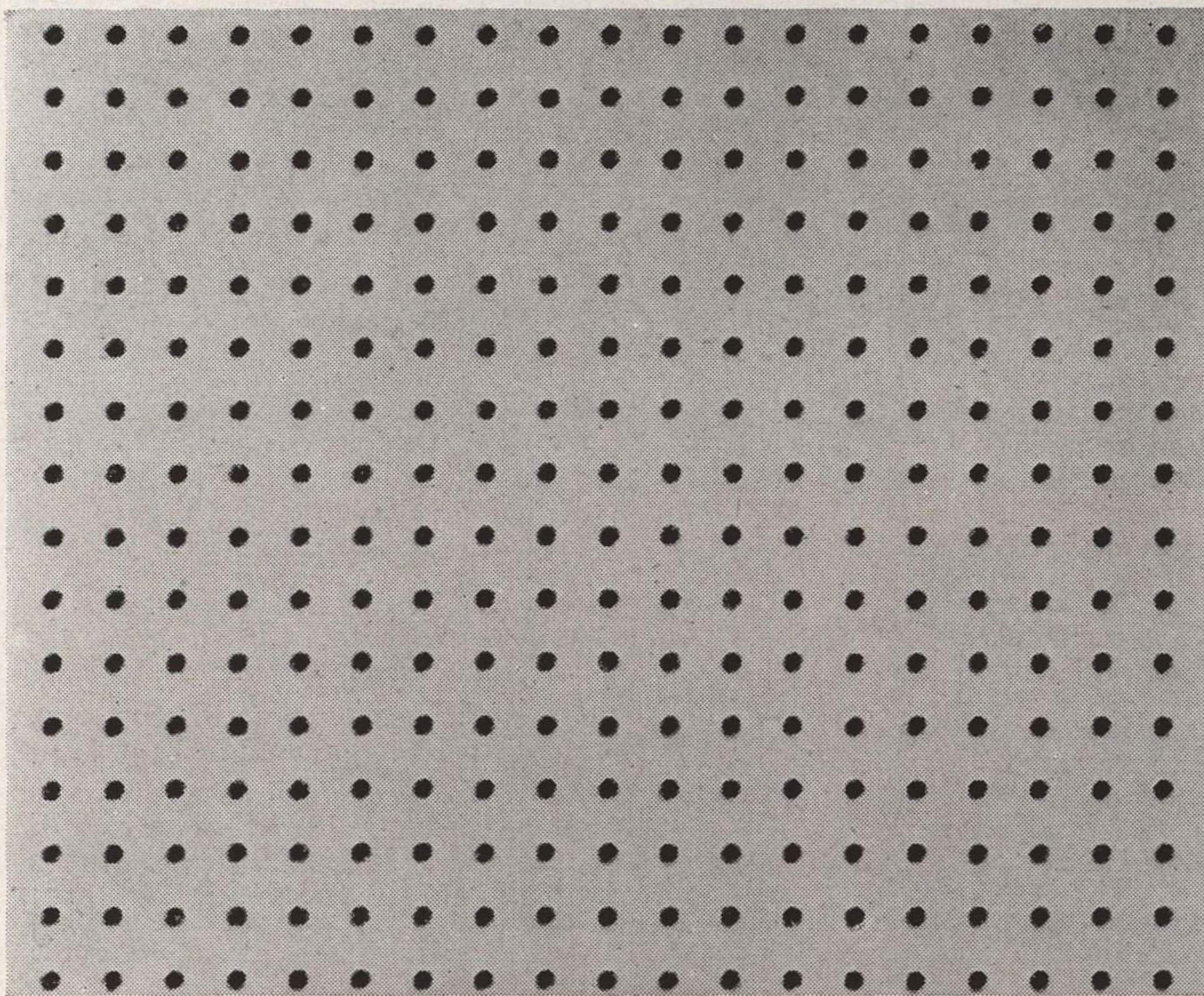
The sound conditioning of building interiors usually requires the introduction of sound-absorbing materials for comfortable and efficient use. Products designed specifically for this purpose are commonly known as *acoustical products*.

Celotex acoustical products include Acousti-Celotex cane and mineral tiles (top two pictures) and Muffletone standard and fissured tiles (two lower pictures). Both are made in different thicknesses, thus providing a range of sound absorption from which proper selection can be made in each case.

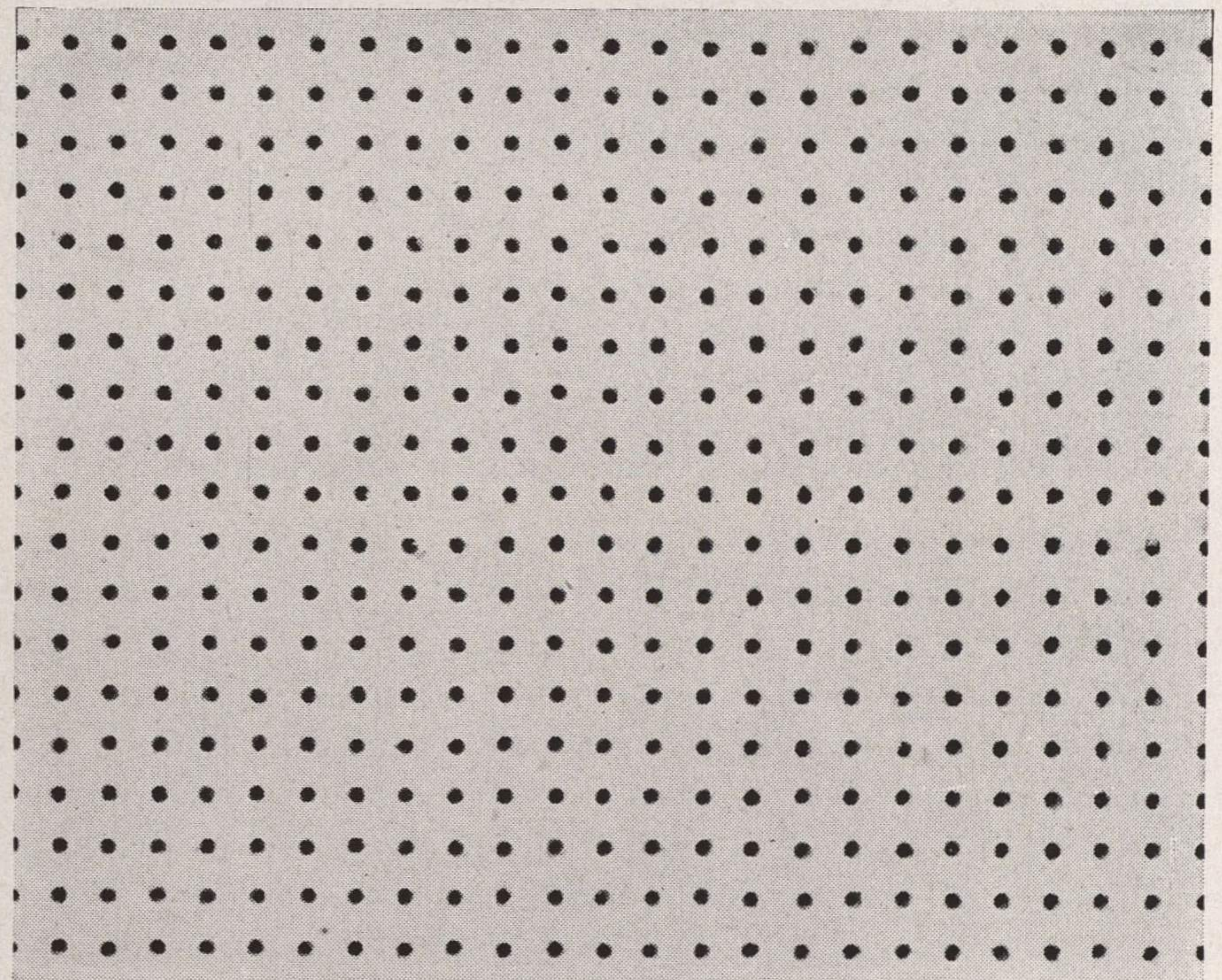
Each area to be sound conditioned must be accurately analyzed and engineered so that the right material may be specified to produce the results desired.

Which material to use, how and where to install it for best results, the mechanics of efficient, economical erection—these important questions may be safely left in the hands of the local Celotex Sound Conditioning distributor. Part of the world's most widely experienced organization in this field, he can be depended upon for competent, efficient service.

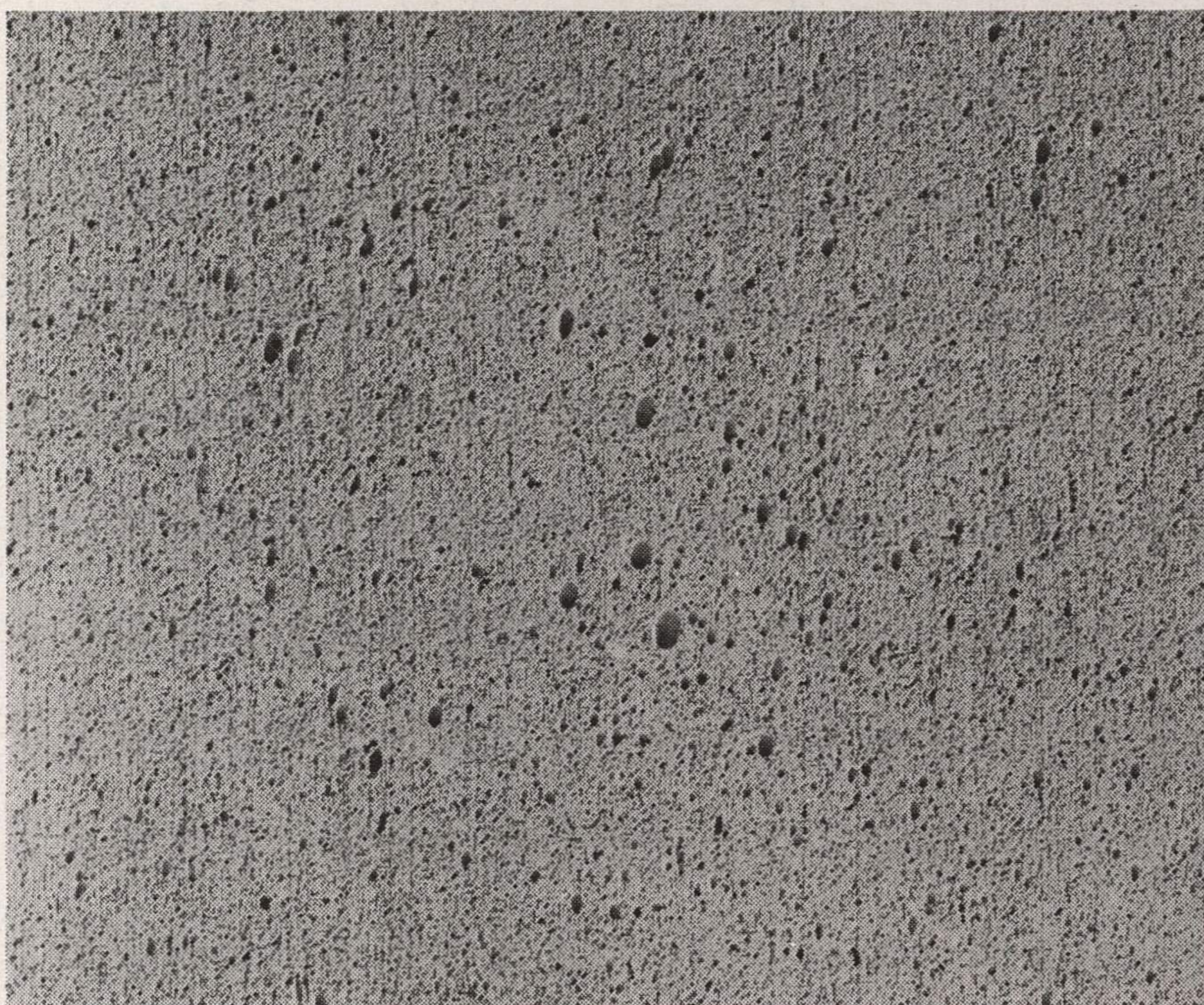
Acousti-Celotex (Cane)



Acousti-Celotex (Mineral)



Muffletone (Standard)



Muffletone (Fissured)

