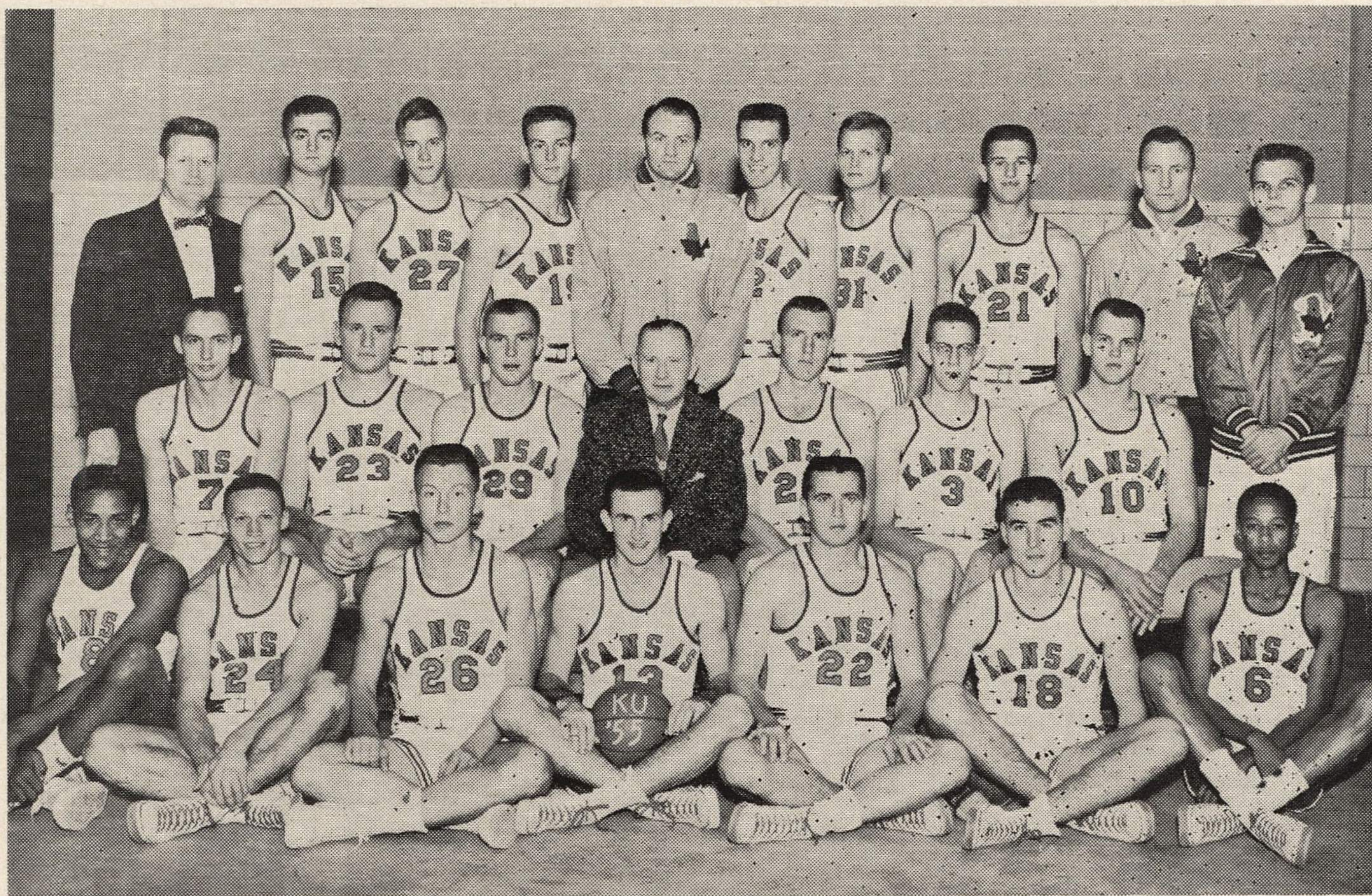


UNIVERSITY OF KANSAS



Front row, left to right: Maurice King, Blaine Hollinger, Mark Boxberger, Capt. Dallas Dobbs, John Parker, Ronnie Johnston, Bob Lockley.

Second row, left to right: Bill Brainard, Jim Toft, Lee Green, Dr. F. C. Allen, head coach; Lew Johnson, Gary Mowry, Al Hurst, Dick Borgen, student manager.

Third row: Dean Nesmith, trainer; Bob McMichael, John Cleland, John Flannagan, Jack Eskridge, assistant; Gene Elstun, Harry Jett, Ed Dater, Dick Harp, assistant coach.

UNIVERSITY OF KANSAS THUMBNAILS

FORWARDS

Boxberger, Mark—All-State Class A selection from Russell High, 1954 . . . Quit football to concentrate on basketball as collegian and showed marked improvement as freshman . . . Owns good determination . . . Must improve in all departments to meet competition among front-court candidates.

Brainard, Bill—Angular Newton veteran who hit full stride last year with successful transition from pivot to forward . . . Can relieve at post if needed . . . Exceptionally difficult to cover around basket . . . Maneuvers well for shots, drives hard for goal and is aggressive on backboard despite lean physique . . . Improved outside jump-shooting and ball-handling last year to convert successfully to forward . . . Terrific competitor who always gives best . . . Normal improvement during senior hitch will elevate him to one of Big Seven's best frontliners . . . Lettered as Sophomore chiefly as substitute center . . . Escorted KU to 82-73 victory over Oklahoma in finals of 1953 Big Seven tournament by canning 22 points, tying single-game tourney free-throw record with 14 charities, also a new modern Mt. Oread mark . . . Finished 15th among conference scorers last year with 12.7 average . . . Logged 40-percent shooting average from field last season, highest among Jayhawk starters.

Elstun, Gene—Regarded as finest sophomore in conference last season . . . Nimble and tough under backboard . . . Good right-hand shooter off set and jump . . . Creditable defender and good hustler . . . Conscientious competitor who always plays hard . . . Earned starting role from outset of season last year despite inexperience and held it all the way . . . Two-year all-state AA prep selection under Bob Johnson, former Jayhawk forward, at Shawnee-Mission . . . Played in 1953 North-South game . . . Second highest scorer on club last year at 299 points . . . Hit 37 percent of field goal tries . . . Ranked 10th among league pointsmen with 14.0 average . . . Normal improvement would rank him as one of conference's finest hands.

Green, Lee—Improved swiftly through final month of sophomore campaign . . . Broke into only three games, but is expected to help front line situation considerably this winter . . . Needs only to sharpen defense to make strong bid for starting job . . . Carries good shooting and rebounding promise.

Jett, Harry—Possibly finest shooter on squad . . . Fires equally well of right-hand jump or set . . . If he can score under pressure vie for starting berth . . . Broke into only two varsity games last of game competition his shooting ability alone will allow him to year as sophomore.

King, Maurice—Frequent starter as sophomore last season, and played well enough to take part in 20 of 21 games . . . Nimble, high-leaping rebounder . . . Secure ball-handler and creditable scorer . . . Hit 35-percent of field goal tries in '55 . . . Improved steadily throughout season to play best game in relief role during last three weeks . . . Normal improvement would lift him to forward of Big Seven standards.

Lockley, Bob—Philadelphia, Pa., sophomore who could become one of greatest jumpers in Kansas basketball history . . . Better than average defensive ability and attains aggressiveness to bid for playing time.

McMichael, Bob—Sturdy 6-3, 190-pound sophomore from Stockton who is stout under boards, but must improve other phases of play to earn playing consideration.

CENTERS

Johnson, Lew—Improved steadily through sophomore season against host of veteran pivots on other Big Seven teams . . . Durable, ceaseless battler who spun good all-round job for first-year pivot in '55 . . . Set new school single-game rebound record of 24 in finale against Oklahoma, surpassing Clyde Lovellette's 21 in 1952 NCAA final against St. John . . . Enjoyed best nights against Kansas State's towering tandem of Roger Craft and Jerry Jung, collecting 11 rebounds and 13 points while limiting Wildcat pair to a total of 12 and three in victory at Manhattan and 13 rebounds and 20 points in Allen Field house dedicatory win, against 7 and 20 for Craft and Jung . . . Collected 230 rebounds for season, more than either Clyde Lovellette or B. H. Horn, both 6-9 all-Americans, were able to harvest in their sophomore seasons . . . One of four regulars over 200 points last season with 210 . . . Capable hooker and good tipper . . . Tireless rebounder and creditable team defender . . . Normal improvement would project him as one of league's best centers despite comparative lack of size at 6-6½ and 190.

Mowry, Gary—Six-seven, 185-pound sophomore from St. Joseph, Missouri, who fashioned great improvement during freshman season . . . Tremendous trier . . . Still must improve to bid for playing time.

Toft, Jim—Big (6-6 by 220) senior with creditable all-around ability who could give spot a major lift by improvement of skills and aggressiveness.

GUARDS

Cleland, John—Topeka sophomore who shows evidence of ability, but must become more consistent to break into playing time.

(Continued on Page 21)