

20% DISCOUNT TO SCHOOLS

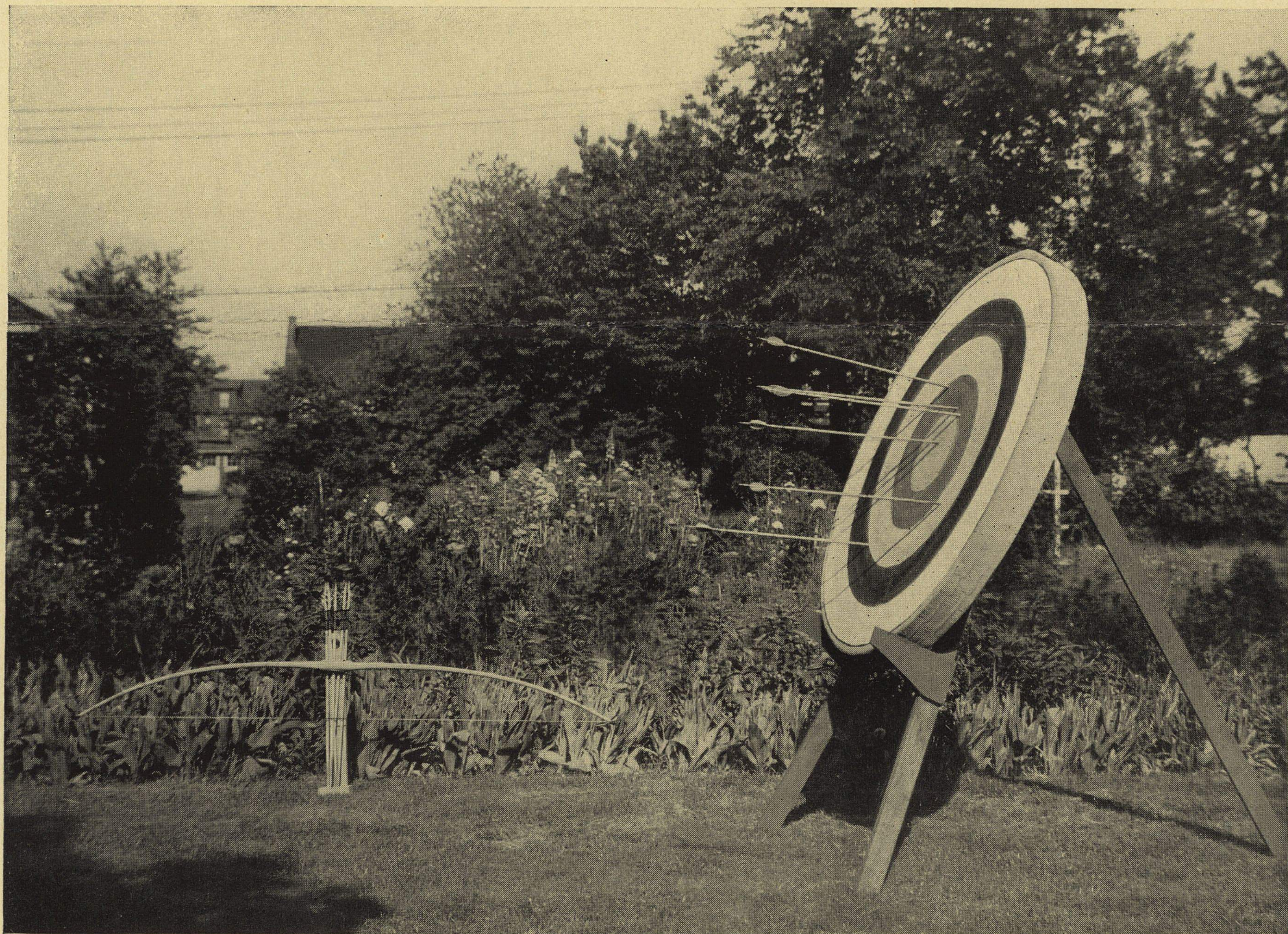
January,  
1939

# ARCHERY EQUIPMENT

EARL MEAD

2645 Taylor Road

Cleveland Heights, Ohio



The Type T2, Cellular Target

## CELLULAR TARGETS (Patent 1837627)

These are fine oversize targets that stay round and firm for a long time and leave little litter when old. They may be rolled to the target stand. The T1 and T3 targets have removable centers.

T1.	48'' target for heavy bows.	Shipping weight about 60 lbs.	\$15.00
T2.	48'' target for light bows.	Shipping weight about 40 lbs.	12.00
T3.	36'' target for heavy bows.		10.00
T4.	36'' target for light bows.		8.00
T5.	24'' Removable center for targets T1 and T3.		4.00

Painted basswood target stand with brackets \$3.00

Target faces of paper:

For the 48'' or 36'' target, \$1.50 each. Indoor target face, 16''. \$1.00 for 12.