

HOTEL PHILADELPHIAN

Nearest First Class Hotel to Pennsylvania

and B. & O. Stations and Main Highways

UNRESTRICTED DAY AND EVENING PARKING

COMFORT AND CONVENIENCE

Without Extravagance

Strategically situated close to the five main highways in and out of this city, Hotel Philadelphian offers to the traveler ideal accommodations.

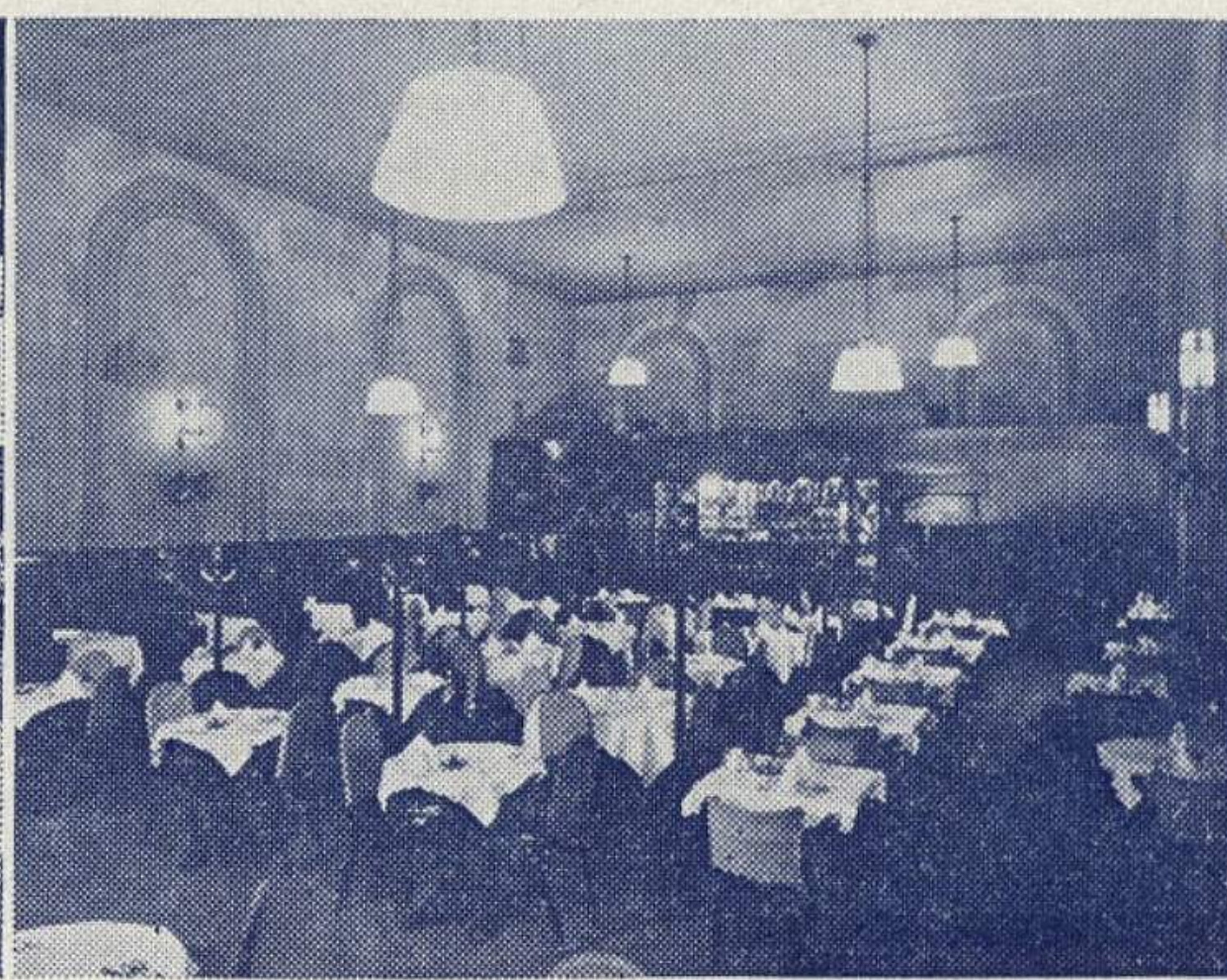
Each comfortable room and bath is tastefully furnished. The suites are amply large for parties of four or more, affording separate bed for each person.

The air-cooled Coffee Shop and Main Dining Room enjoy an enviable reputation for the quality and wholesome goodness of its cuisine. The menus are sensibly priced to fit any budget.

Stay at the Hotel Philadelphian. You will like it!



PENGUIN BAR



COFFEE SHOP

600 ROOMS - - - WITH PRIVATE BATH

Single from \$2.50

Double from \$4.00

Twin beds from \$5.50

SPECIAL FAMILY AND GROUP RATES

COFFEE SHOP

Table d'Hote and A La Carte Service

Breakfast

Luncheon

Dinner

From 30c

From 35c

From 55c

ALL PUBLIC ROOMS AIR COOLED