

STUDY OF IMPROVEMENT OF TEACHER PERSONNEL

DR. JESSIE M. PANGBURN, Spearfish
Gen. Dir., SDEA Study of Teacher Preparation

THE long-term program committee in initiating an investigation of the improvement of teacher personnel in South Dakota schools has undertaken a project which calls forth the enthusiastic support of the educators of the state. The hearty response of those invited to participate in the investigation, and the cordial cooperation of the teachers who filled out the questionnaires at the time of the county institutes, indicate a readiness to focus professional effort upon "*Improved Education with Improved Conditions*" in the most vital of all educational activities, that of classroom contact of pupil with teacher.

The sub-committees in charge of the various divisions of the investigation bring to the work they are undertaking a combination of competent scholarship, practical experience and professional zeal. In them are represented varying special interests and points of view. As they investigate present conditions in our state, compare them with those in other parts of the nation, and discover trends in educational practice, they may confidently be expected to formulate policies and recommendations informed by the facts discovered and guided by the vision of what our schools may contribute to the welfare of South Dakota.

Organization of Committees Study of Teacher Personnel

Director—Jessie M. Pangburn, Spearfish.

Advisory—Sec'y N. E. Steele, Sioux Falls; Supt. J. F. Hines, Pierre; Pres. I. D. Weeks, Vermillion; Pres. C. W. Pugsley, Brookings; Regent H. N. Nissen, Yankton.

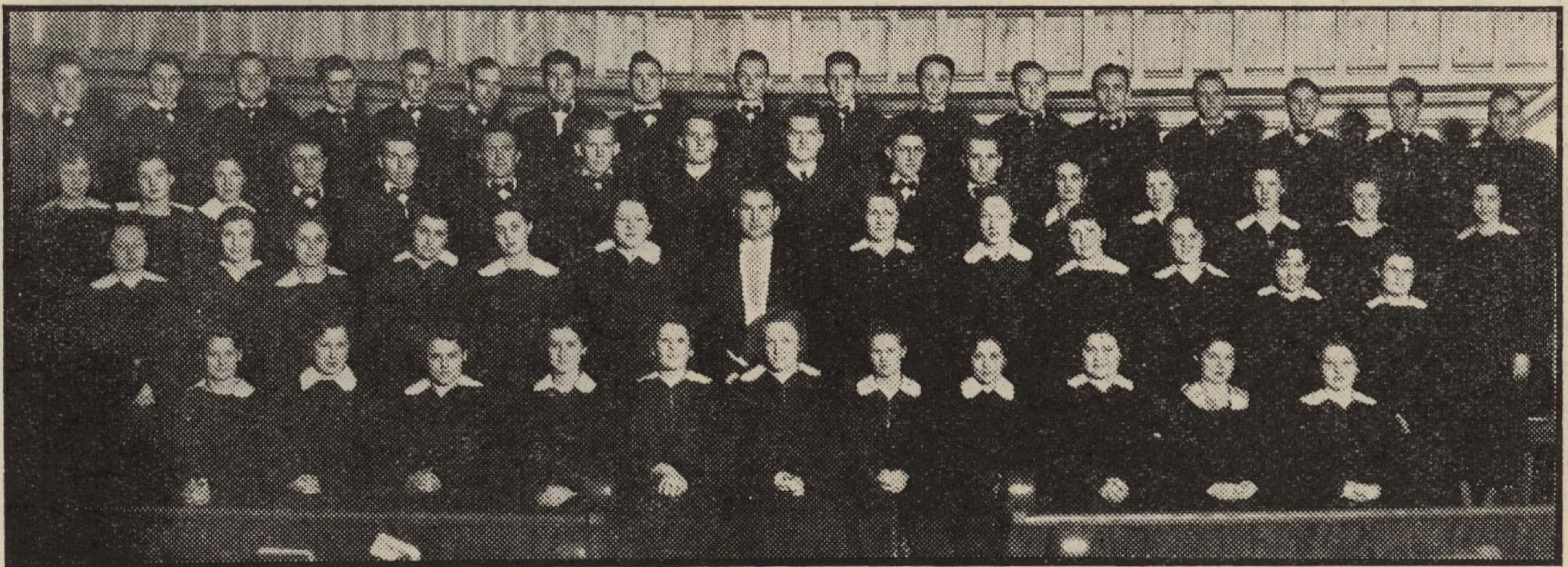
1. *Improvement of Pre-Service Education of Teachers*: Wilma Leslie Garnett, chairman, Madison; Mrs. Nellie Kallman, Mission Hill; Co. Supt. Anna Godsmith, Highmore; Prof. R. H. Eliassen, Yankton; Supt. E. B. Bergquist, Rapid City.

2. *Improvement of Teachers in Service*: Mable Cummings, chairman, Rapid City; Margaret Nevill, Aberdeen; Co. Supt. Mrs. W. S. Hodgson, Redfield; Prof. E. A. Bixler, Aberdeen; Supt. E. Jorgenson, Selby; Dean M. W. Hyde, Mitchell; Olive Ringsrud, Beresford; Paul Heide, Sioux Falls.

3. *Supply and Demand of Teachers in Relation to a Program of Improving Teacher Personnel*: M. O. Skarsten, chairman, Spearfish (graded elementary); Guy A. Jacobs, Spearfish (1- and 2-teacher); E. L. Bersagel, Aberdeen (secondary schools); M. F. Tostlebe, Aberdeen.

4. *Certification Requirements in Relation to Improvement of Teacher Personnel*: Prof. W. H. Batson, chairman; Robert Reedy, Aberdeen; Co. Supt. Mamie Grace, Mitchell; Gertrude Fishback, Pierre; Supt. J. M. Grieg, Buffalo Gap.

5. *Salaries and Living Costs as Affecting Improvement of Teacher Personnel*: (The SDEA committee on teachers' living costs is in charge of this phase of the teacher personnel investigation.) Prof. C. R. Wiseman, chairman, Brookings; Deputy V. J. Linn, Pierre; Editor S. B. Nissen, Sioux Falls; Co. Supt. Douglas Chittick, Leola; Delbert Reutter, Huron; Supt. F. S. Wagner, Salem.



A Cappella Choir, Dakota Wesleyan University, Director, Thos W. Williams
General Session, SDEA Convention, Mitchell, Nov. 26