

GIRLS' CLOTHING

MATERIALS AND MEASUREMENTS

FLANNEL. A high grade, medium weight broadcloth flannel made especially for athletic use. It has extra strength and is very durable.

POPLIN. A special quality mercerized poplin that looks and wears well. The colors are fast and bright and it is cooler than flannel.

CORDUROY. A special grade for athletic use in good, bright colors.

MOLESKIN. A high grade suede-like cloth in bright attractive colors.

GABERTEX. A sanforized, fast color material similar to gaberdine.

SATEEN. Good quality sateen with a permanent lustre finish.

JOCKEY SATIN. Heavy weight, cotton backed rayon silk, high lustre.

RAYON SATIN. Good weight, reinforced back satin, lustrous.

Specify actual waist measurement, circumference of hips and thighs at bottom of pants. Delivery in one week to ten days as a rule.

BASKET BALL SHORTS

Standard style shorts with medium length legs, having about a six-inch inseam and elastic inserts to prevent pulling up; button at the sides.

No. W52F—Flannel	\$4.50	\$3.35	No. W52P—Poplin	\$2.65	\$2.00
No. W52E—Jockey Satin. 4.00	3.00		No. W52S—Gabertex	2.65	2.00
No. W52ER—Rayon Satin 3.35	2.50		No. W52M—Moleskin	2.50	1.85
No. W52C—Corduroy	3.00	2.25	No. W52Y—Sateen	2.35	1.75

A popular style of shorts with semi-belted front; elastic leg inserts.

No. W54F—Flannel	\$4.60	\$3.45	No. W54P—Poplin	\$2.85	\$2.15
No. W54E—Jockey Satin. 4.35	3.25		No. W54S—Gabertex	2.85	2.15
No. W54ER—Rayon Satin 3.65	2.75		No. W54M—Moleskin	2.50	1.85
No. W54C—Corduroy	3.15	2.35	No. W54Y—Sateen	2.35	1.75

Boys' style shorts with button front, 4-inch inseam and elastic leg inserts.

No. W55F—Flannel	\$4.65	\$3.50	No. W55P—Poplin	\$2.80	\$2.10
No. W55E—Jockey Satin. 4.20	3.15		No. W55S—Gabertex	2.80	2.10
No. W55ER—Rayon Satin 3.80	2.85		No. W55M—Moleskin ...	2.60	1.95
No. W55C—Corduroy	3.15	2.35	No. W55Y—Sateen	2.50	1.85
No. B375—Belt Extra. Web belt, 1 3/4" any standard color.....40c .30					

Very popular and practical shorts; short inseam, elastic rib cuffs.

No. W56F—Flannel	\$3.80	\$2.85	No. W56P—Poplin	\$2.80	\$2.10
No. W56E—Jockey Satin. 3.65	2.75		No. W56S—Gabertex	2.65	2.00
No. W56ER—Rayon Satin 3.25	2.45		No. W56M—Moleskin ...	2.50	1.85
No. W56C—Corduroy	3.00	2.25	No. W56Y—Sateen	2.35	1.75
(Contrasting knit inserts down sides of pants, extra pair.....75c Net)					

BASKET BALL KNICKERS

Standard style with 18 to 21" outseam; pocket and elastics in legs.

No. W48F—Flannel	\$5.00	\$3.75	No. W48P—Poplin	\$2.65	\$2.00
No. W48E—Jockey Satin. 4.35	3.25		No. W48S—Gabertex	2.50	1.85
No. W48ER—Rayon Satin 3.65	2.75		No. W48Y—Sateen	2.20	1.65
No. W48C—Corduroy .	3.15	2.35			

(Zipper at side instead of buttons in shorts or knickers, extra.....60c Net)

STRIPING ON SHORTS NET

3/4" Striped Knit Inserts, extra 75c

3/4" Plain Knit Inserts, extra 60c

Silk Braid Striping As On Boys' Pants

No. 1S—Sides only.18c Sides and bot.35c

No. 2S—Sides only.25c Sides and bot.50c

No. 3S—Sides only.18c Sides and bot.35c

No. 4S—Sides only.25c Sides and bot.50c

No. 6S—Sides only.28c Sides and bot.55c

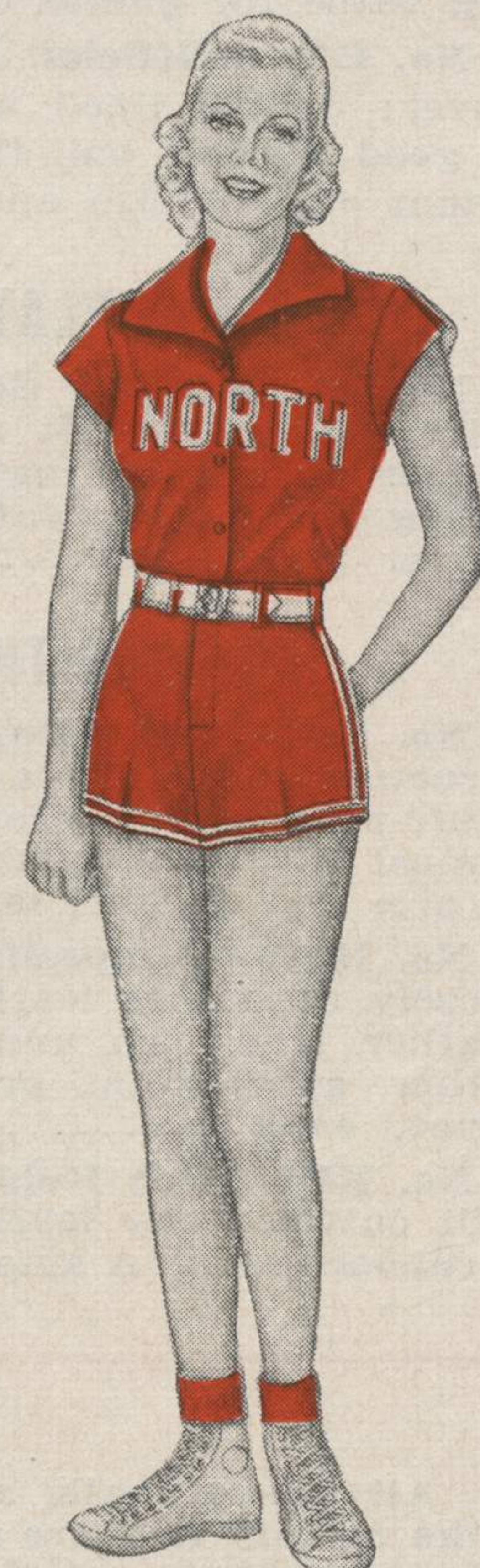
Knickers: Add 10c to the above for sides only.



No. W48—Knicker



No. B878—Shirt
No. W54—Shorts
(Side Inserts, 75c Extra)



No. W29—Shirt
No. W55—Shorts

GIRLS' WARM-UPS

Special Styles to Order in Ten Days

COLORS:—All materials listed below for warm-ups are available in all standard colors. Warm-ups should be dry cleaned to insure fast colors.

DELIVERY:—Any style warm-up made to order in our own factory according to specifications for delivery within one week to ten days.

MEASUREMENTS:—Give normal bust and insleeve measurements for coats and pull-overs. Specify waist, hips and inseam measurements for pants.

Wholesale Prices

No. C814A—Brushed wool coat with raglan sleeves. Price.....	\$8.00	\$5.95
No. C814ER—Rayon satin coat, same style. Price.....	5.75	4.25
No. C814E—Jockey satin coat, same style. Price.....	7.75	5.75
No. C814C—Corduroy coat, same style. Price.....	5.00	3.75
No. C814S—Gabertex coat, same style; sanforized.....	4.25	3.15
No. C814M—Moleskin coat, same style. Price.....	3.85	2.85
No. C814L—Colored cotton fleece lined coat. Price.....	2.50	1.85
No. C817A—Brushed wool coat. Price, pockets extra.....	8.75	6.50
No. C817E—Jockey satin coat. Price, pockets extra.....	8.50	6.20
No. C817ER—Rayon satin coat. Price, pockets extra.....	6.50	4.75
No. C817S—Gabertex coat; fast colors. Pockets extra.....	4.85	3.65
No. C817C—Corduroy coat. Price, pockets extra.....	5.75	4.25
No. C817M—Moleskin coat. Price, pockets extra.....	4.35	3.25
No. C817L—Colored cotton; fleece lined. Pockets extra....	2.50	1.85
No. C812—White Cotton Coat. A medium weight white cotton fleece lined coat in stock in sizes 30 to 44, inclusive. Price.....		
	\$1.75	\$1.30
No. C812A—Brushed wool, same style. Price, pockets extra	8.75	6.50
No. C812ER—Rayon Satin, same style. Price, pockets extra	6.50	4.75
No. C812E—Jockey satin, same style. Price, pockets extra.	8.50	6.20
No. C812C—Corduroy, same style. Price, pockets extra....	5.75	4.25
No. C812S—Gabertex, same style. Price, pockets extra....	4.85	3.45
No. C812M—Moleskin, same style. Price, pockets extra....	4.35	3.25
No. C812L—Colored cotton, same style. Pockets extra.....	2.50	1.85
No. C820A—Brushed wool zipper pull-over; ribbed trim...	7.75	5.75
No. C820E—Jockey satin pull-over, same style. Price.....	7.50	5.50
No. C820ER—Rayon satin pull-over, same style. Price.....	6.50	4.75
No. C820S—Gabertex pull-over, same style. Price.....	4.35	3.25
No. C820C—Corduroy pull-over, same style. Price.....	5.35	3.95
No. C820M—Moleskin pull-over, same style. Price.....	3.85	2.85
No. C820L—Colored cotton pull-over; fleece lined. Price...	2.50	1.85
No. C821A—Brushed wool two-tone pull-over; zipper.....	8.00	6.00
No. C821E—Jockey satin pull-over, same style. Price.....	7.75	5.75
No. C821ER—Rayon satin pull-over, same style. Price.....	6.75	5.00
No. C821S—Gabertex pull-over; sanforized, fast colors....	4.65	3.65
No. C821C—Corduroy pull-over, same style. Price.....	5.65	4.15
No. C821M—Moleskin pull-over, same style. Price.....	4.00	3.00
No. C821L—Colored cotton pull-over, same style. Price....	2.75	2.00

Full length zipper in coats instead of buttons, extra.....60c Net
Pockets in coats, extra (except in No. C812 white cotton coat).....35c Net

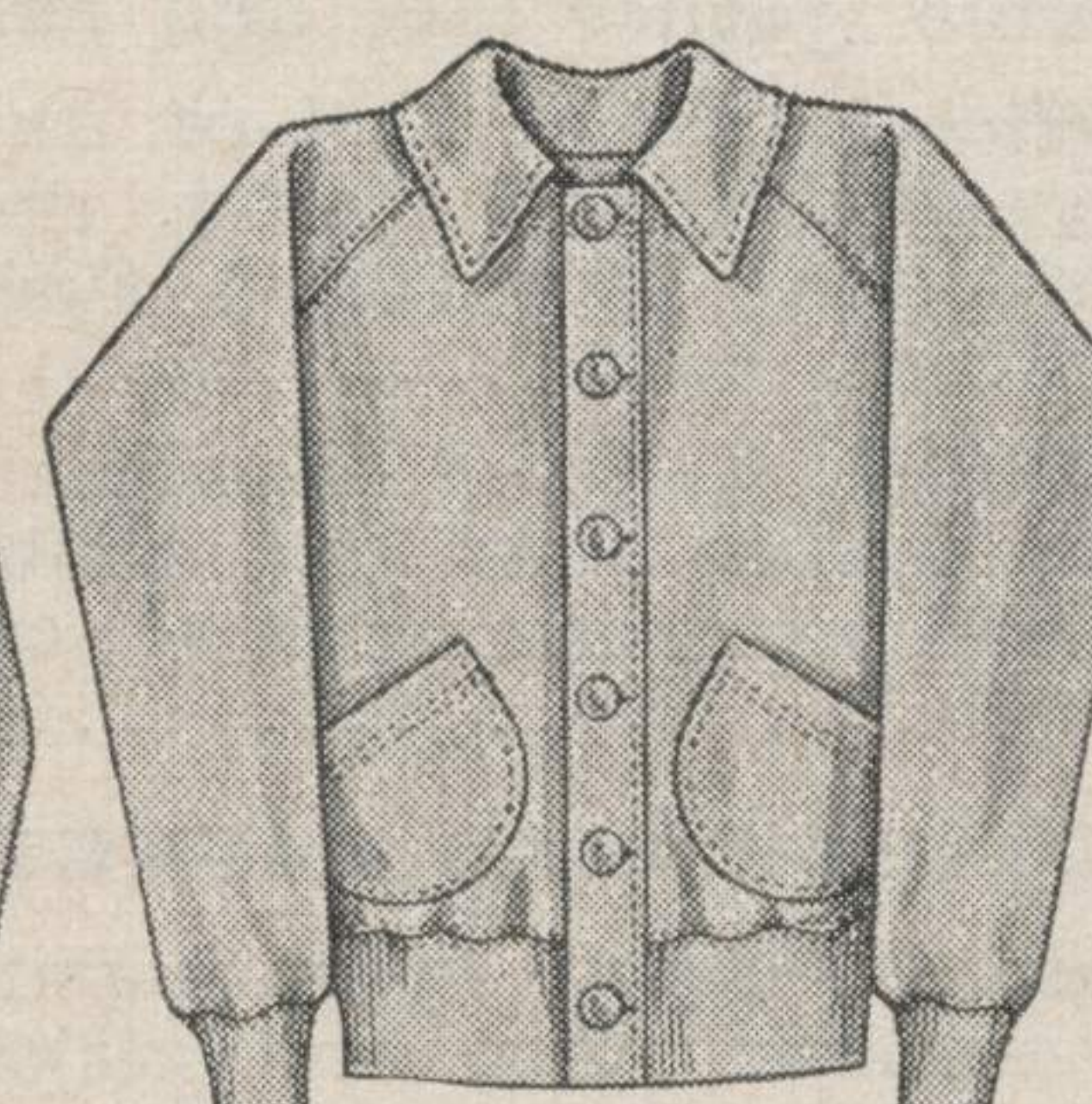
GIRLS' WARM-UP PANTS

No. C822A—Brushed wool warm-up pants to match any of the above garments. Have elastic in waist and zippers in the legs.....	\$6.75	\$5.00
No. C822E—Jockey satin with elastic waist and zippers....	6.50	4.85
No. C822ER—Rayon satin pants with elastic waist and zips	5.50	4.10
No. C822C—Corduroy pants with elastic waist and zippers.	4.75	3.45
No. C822M—Moleskin pants with elastic waist and zippers.	3.35	2.50
No. C822S—Gabertex pants with elastic waist and zippers..	3.75	2.75
No. C822L—Colored cotton with draw strings; leg elastics..	1.85	1.40

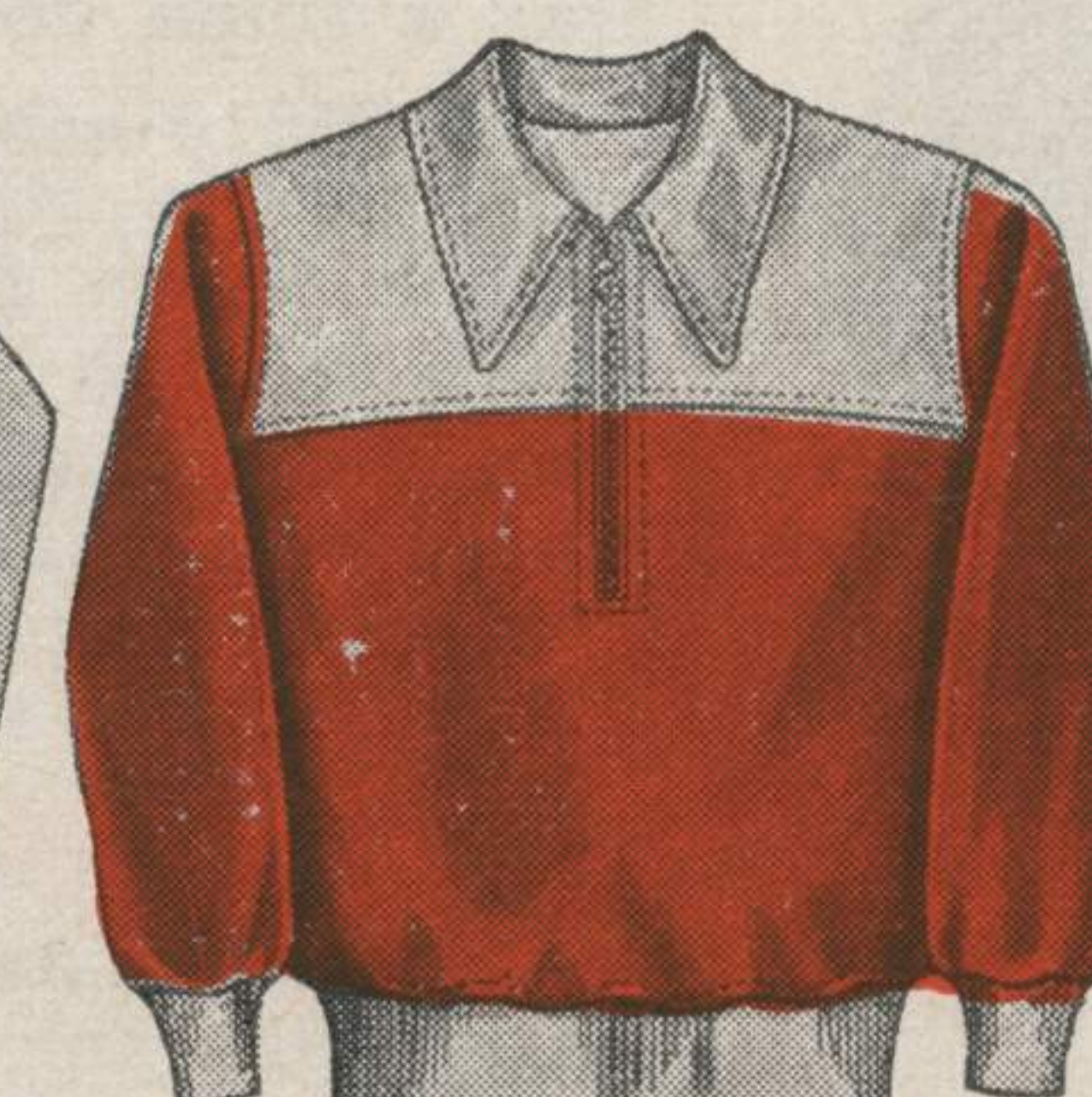
(Trouser style warm-up pants with cuffs at bottom, no extra charge.)



No. C814



No. C812



No. C821



No. C817—Coat
No. C822—Pants



No. C820—Pull-over
No. C822—Pants

Our Suits Are Known by Their Natty Appearance

Your Choice of Five Styles in Seven Materials