

ARM-UP SUITS

le to Order in About Ten Days

All Styles Made in Either Boys' or Girls' Patterns—ADD Letter "W" Before Style Number for Girls' Suits



No. C703—Coat
(Pockets Extra)



No. C747—Coat
(Pockets Extra)



No. C750—Coat
(Pockets Included)

No. C703

C703A—Knit brushed Wool.....	\$8.35	\$6.25
C703H—Woven Wool, 24-oz.....	7.35	5.50
C703E—Best Jockey Satin.....	7.00	5.25
C703ER—Rayon Satin	5.65	4.25
C703D—Gaberdine (Whipcord)....	5.35	4.00
C703C—Athletic Corduroy	5.00	3.75
C703S—Gabertex, fast color	4.00	3.00
C703LR—Rayon-Cotton Brush knit	4.00	3.00
C703M—Moleskin Cloth	3.80	2.85

No. C717

C717A—Knit Brushed Wool.....	\$8.00	\$6.00
C717H—Woven Wool, 24-oz.....	7.00	5.25
C717E—Best Jockey Satin.....	6.65	5.00
C717ER—Rayon Satin	5.35	4.00
C717D—Gaberdine (Whipcord)....	5.00	3.75
C717C—Athletic Corduroy	4.65	3.50
C717S—Gabertex, fast color.....	3.95	2.95
C717LR—Rayon-Cotton Brush knit	3.95	2.95
C717M—Moleskin Cloth	3.60	2.70

No. C747

C747A—Knit Brushed Wool	\$10.00	\$7.50
C747H—Woven Wool, 24-oz.....	9.00	6.75
C747E—Best Jockey Satin.....	8.65	6.50
C747ER—Rayon Satin	7.35	5.50
C747D—Gaberdine (Whipcord)...	6.65	5.00
C747C—Athletic Corduroy	6.00	4.50
C747S—Gabertex, fast color.....	5.15	3.85
C747LR—Rayon-Cotton Brush knit	5.15	3.85
C747M—Moleskin Cloth	4.95	3.70

No. C750

C750A—Knit Brushed Wool	\$10.35	\$7.75
C750H—Woven Wool, 24-oz.....	9.35	7.00
C750E—Best Jockey Satin.....	9.00	6.75
C750ER—Rayon Satin	7.65	5.75
C750D—Gaberdine (Whipcord) ..	6.65	5.00
C750C—Athletic Corduroy	6.35	4.75
C750S—Gabertex, fast color.....	5.35	4.00
C750LR—Rayon-Cotton Brush knit	5.35	4.00
C750M—Moleskin Cloth	5.00	3.75

No. C753

C753A—Knit Brushed Wool	\$10.35	\$7.75
C753H—Woven Wool, 24-oz.....	9.35	7.00
C753E—Best Jockey Satin.....	9.00	6.75
C753ER—Rayon Satin	7.65	5.75
C753D—Gaberdine (Whipcord)...	6.65	5.00
C753C—Athletic Corduroy	6.35	4.75
C753S—Gabertex, fast color.....	5.35	4.00
C753LR—Rayon-Cotton Brush knit	5.35	4.00
C753M—Moleskin Cloth	5.00	3.75

Pants and Trousers

Made on Either Boys' or Girls' Patterns.

Zipper in the legs and elastic in the waist. Small, medium or large. (Trousers with sewed seams, with or without cuffs, optional.)

Add Prefix Letter "W" for Girls' Warm-Ups

C706A—Knit Brushed Wool.....	\$7.65	\$5.75
C706H—Woven Wool, 24-oz.....	6.65	5.00
C706E—Best Jockey Satin.....	6.35	4.75
C706ER—Rayon Satin	5.00	3.75
C706D—Gaberdine (Whipcord)....	4.65	3.50
C706C—Athletic Corduroy	4.35	3.25
C706S—Gabertex, fast color	3.60	2.70
C706LR—Rayon-Cotton Brush knit	3.60	2.70
C706M—Moleskin Cloth	3.25	2.45

Style of Knit Trim Optional.

Add Prefix "W" For Girls' Suits

IT PAYS TO PLAY



No. C753—Coat
No. C706—Pants
(Leg Inserts Extra)



No. C717—Coat
No. C706—Trousers
(Pockets Extra)



TRAINING SUITS

Regulation Cotton Training Suits in Stock



COTTON TRAINING SUITS

No. C700—Grey Shirt. Dark grey cotton with a white fleece lining; heavy weight, 14-lb. A real high quality shirt made with extra fullness and extra length. Stock sizes are 27 to 48, incl....\$1.35

Each	Doz.	Gross
\$1.00	\$11.50	\$132.00

No. C720—Grey Shirt. Dark grey cotton fleece lined shirt as above except medium weight. Stock sizes are 27 to 48, incl. Price.....\$1.15

.85	9.50	108.00
-----	------	--------

No. C721—Grey Pants. Dark grey cotton to match above shirts; medium weight and white fleece lined. Draw strings in waist; elastic in the legs. Full cut and roomy. Small, medium or large. Pair....\$1.25

.95	11.00	126.00
-----	-------	--------

No. C710—White Shirt. Medium weight, pure white cotton fleece lined shirt; full cut and roomy. Stock sizes 27 to 45, incl. Price.....\$1.15

.85	9.50	108.00
-----	------	--------

No. C711—White Pants. Medium weight, pure white cotton fleece to match above shirts. Small, medium and large sizes. Pair.....\$1.35

1.00	11.50	132.00
------	-------	--------

No. C714—Zipper Shirt. Pure white cotton fleece lined shirt with collar and short zipper at neck; medium weight. A popular style for boys' or girls' wear. Stock sizes 30 to 45. Price.....\$1.70

\$1.25

No. C812—White Coat. Pure white cotton fleece lined coat with collar, pockets and blouse band. Sizes 30 to 44. Price.....\$1.85

1.40

COLORED TRAINING SUITS

No. C702—Colored Shirt. Cotton fleece lined shirt, medium weight in all standard colors. Stock sizes 33 to 45. Each...\$1.40

\$1.05	\$12.00	Doz.
--------	---------	------

No. C713—Colored Pants. Cotton fleece lined pants; standard colors to match shirts. Small, medium, large. Pair...\$1.85

\$1.40	\$16.00	Doz.
--------	---------	------

Zipper in Training Pants, Extra

Zipper can be put in the legs of cotton training pants with only a few days delay in delivery. Extra, per pair.....75c Net

STENCILING ON TRAINING SUITS

Unless otherwise specified, black ink is used; Stencil in other colors costs 5c a garment extra.

Single Letters or Numbers, 2 to 6 ins. Each...	15c	8c	5c
Single Letters or Numbers, 7 to 10 ins. Each...	20c	12c	7c

Lettering designs, with or without emblems, one-color stenciling, \$1.25 Dozen; if LESS than 24 garments are stenciled alike, ADD \$1.25 for stenciling pattern. (Lettering designs in two colors, 50% extra.)

BASKET BALL KNEE PADS

No. B130—Chuck Taylor pads of soft black leather with white roll binding and sheepskin fleece lining. Improved adjustable padded strap. Pair.....\$2.85

\$2.15

No. 130C—Same pads as the above made in all standard colors. To order in one week. Pair.....\$3.35

\$2.50

No. B131—Chuck Taylor style pads of black leather lined with white felt; padded strap. Pair.....\$2.00

\$1.50

No. B131C—Same pads as the above, made in all standard colors. To order in one week. Pair.....\$2.35

\$1.75

No. B132—Colored Satin covered sponge rubber pads lined with white drill; adjustable padded leather strap. Any color in about one week. Pair.....\$2.85

\$2.15

No. B122—Kelly Pads of best white felt with leather reinforcements and wide elastic web strap. A light weight and popular style pad. Pair.....\$2.00

\$1.50

No. B124—Grid Cushion pads of thick foam rubber covered with two-way stretch woven elastic. Full-fashioned and form fitting. Small, medium or large. Pair.....\$1.80

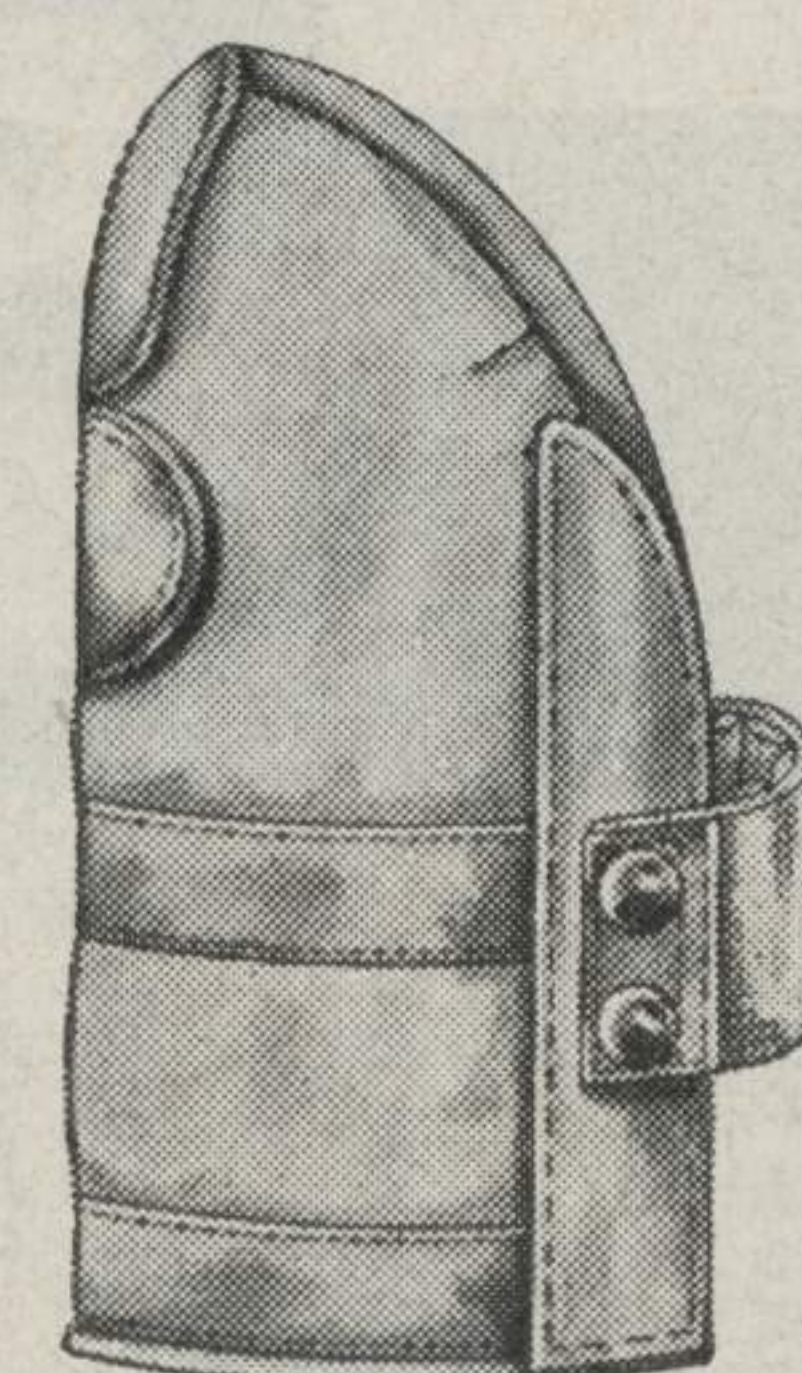
\$1.35

No. B124C—Same pads as the above made in Scarlet, Orange, Lt. Gold, Royal Blue, Kelly Green or Black. (No other colors available.) To order. Pair.....\$1.95

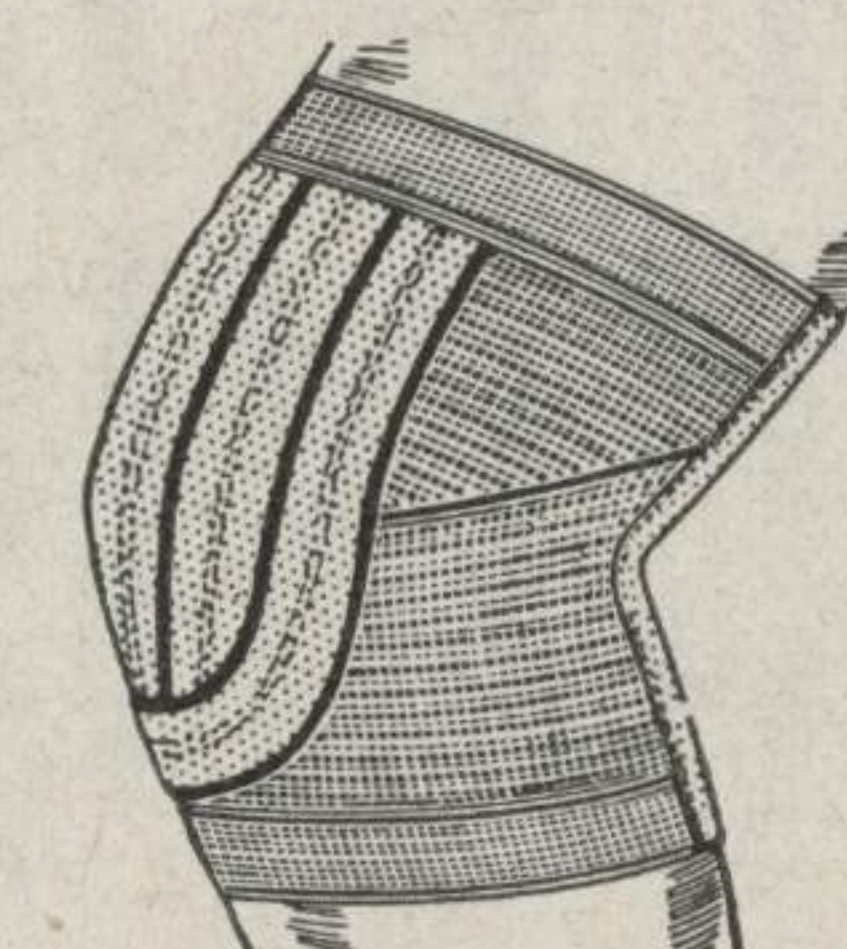
\$1.45

No. B128—Elastic Pads of heavy woven elastic with white felt protectors. Small, medium or large. Pair.....75c

55c



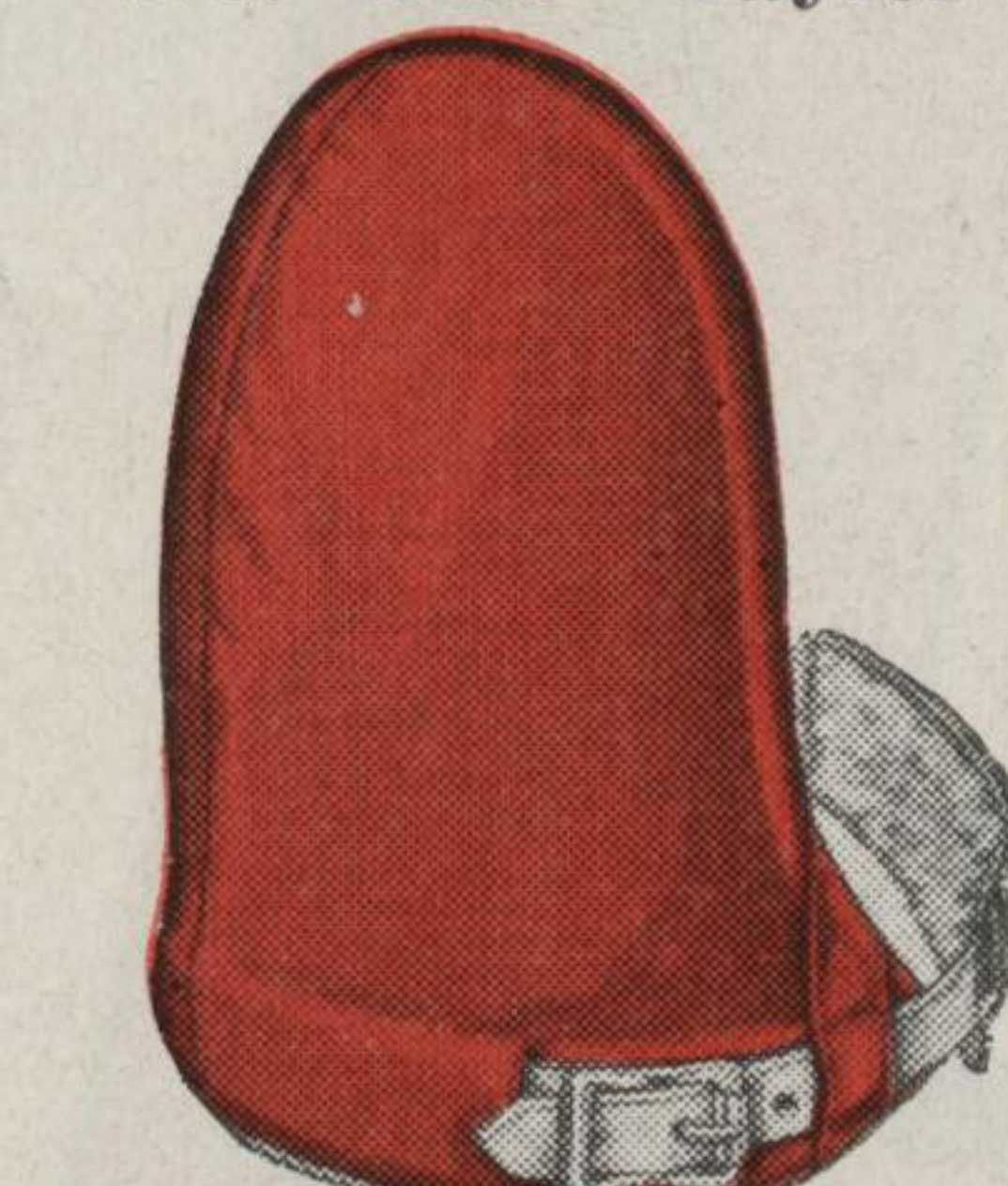
No. B122—Kelly



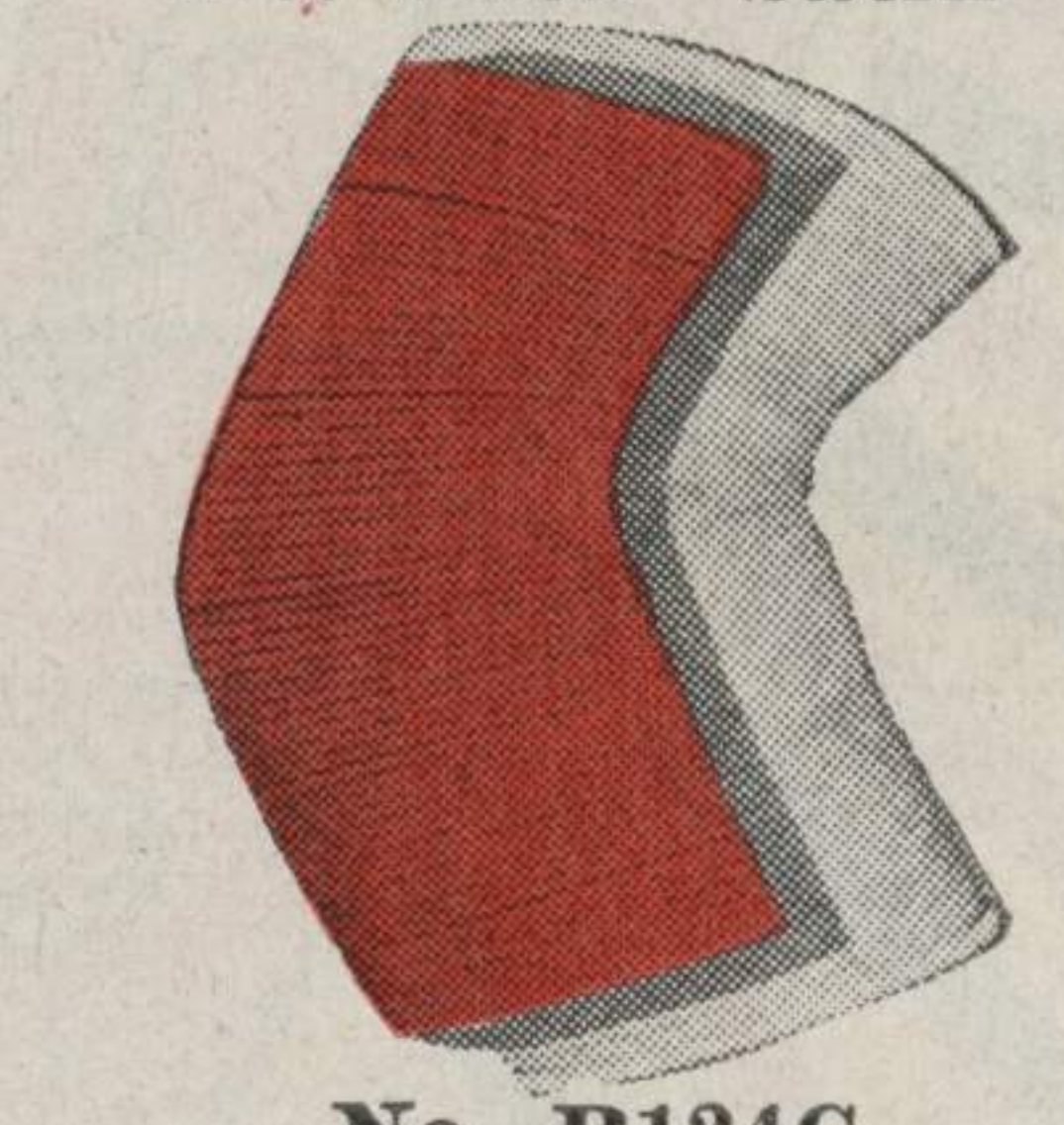
No. B128—Elastic



No. B130—Taylor



No. B132—Satin



No. B124C
Grid Cushion

Our Complete Fall Catalog Sent Upon Request