



BASKET BALL SHOES



LEATHER BASKET BALL SHOES



No. B50—Leather Shoe



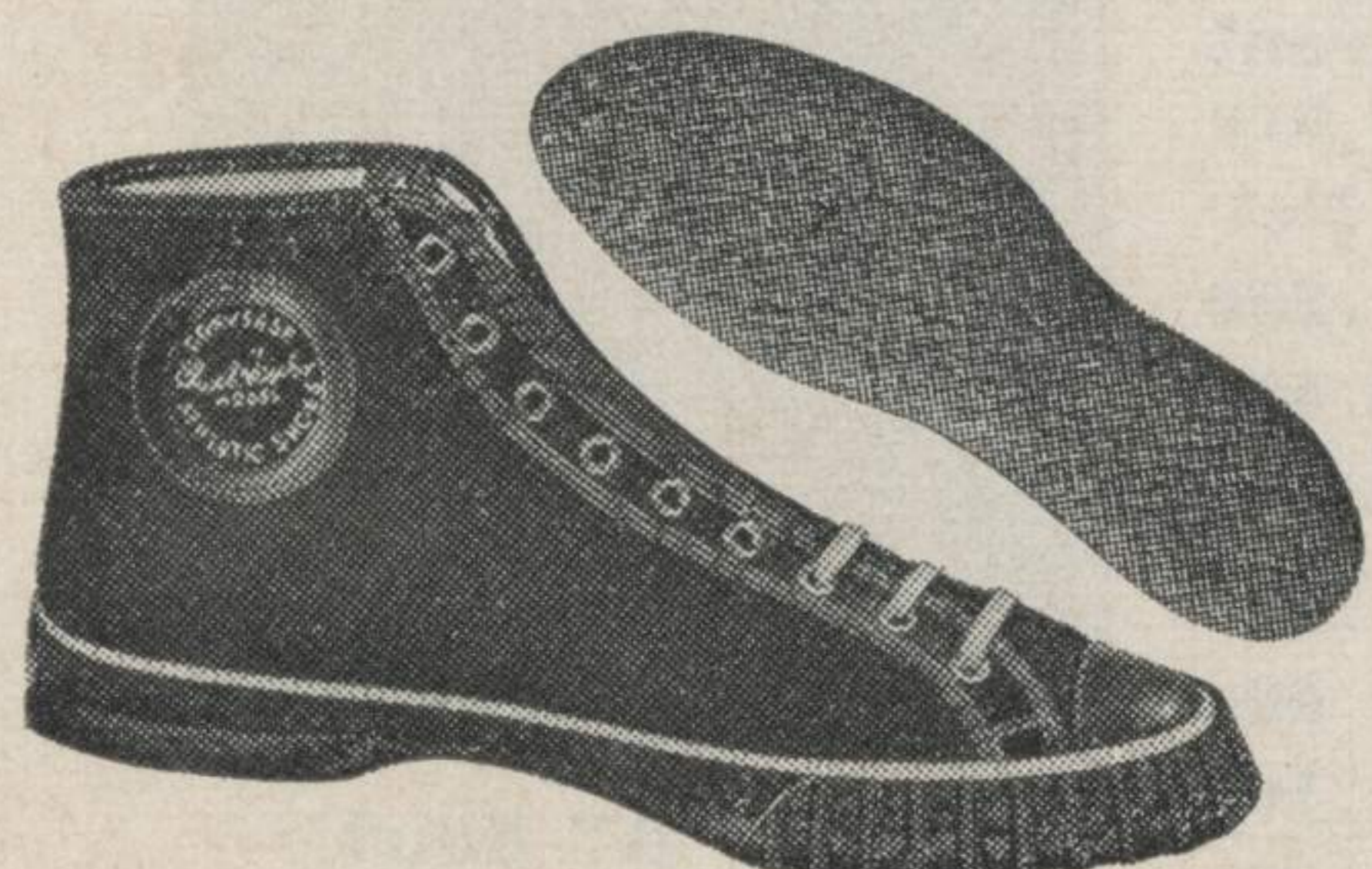
No. B52—Olympic "All-Star"



No. B54—"Court King"



No. B57—"Mor-Pla"



No. B58—"Gym" Special

No. B50—Leather Shoes. Made of durable black leather that is soft and pliable, light in weight and perfect fitting. Built on the famous Brouwer Research scientific last which gives perfect foot alignment without cramping the toes. Other special features are a sponge rubber arch support, heel cushion, leather heel counters and leather insoles that prevent burning feet and blisters. The molded black gum soles of improved design will hold on any floor. (The shoes may be resoled at any time at a savings.) Stock sizes 6 to 12. Price, per pair.....\$5.75 **\$3.95**

No. B50—Shoes Resoled. Delivery in two weeks. Pair..\$2.35 **Net**

No. 56R—Riddell Leather Shoes. Made of a serviceable Athletic Tanned black leather with Goodyear welt, molded rubber soles that permit resoling. Has leather insoles with an improved shock-absorbing cushion of sponge rubber. In stock in sizes 6 to 12. Pr.\$6.50 **\$4.50**

No. B56L—"All-Star" Leather. Has specially tanned black leather uppers and the famous Converse "All-Star" gum rubber soles. Built-in sponge rubber heel and arch. (To order only in one week.) Price, per pair.....\$7.00 **\$5.00**

CONVERSE "ALL-STAR" CANVAS SHOES

No. B52—Olympic "All-Star." White canvas uppers with improved black gum rubber soles that are more durable than ever. The uppers are loose lined and the "Air-Flo" soles afford ventilation and springiness not known in other shoes. Built-up arches and sponge cushioned heels are also features of merit. Sizes 5 to 12. Pr..\$5.00 **\$3.50**

No. B56—Chuck Taylor "All-Star." One of the most popular basket ball shoes known. Has black canvas uppers, loose lined, durable black gum rubber soles with "Air-Flo" insoles. Also has built-up arch and sponge heel cushions as above. 5 to 14. Pr...\$5.00 **\$3.50**

"COURT KING" SHOE

No. B54—An unusually fine, medium weight shoe with all the desirable features of the higher priced shoes. The loose lined black canvas uppers are scientifically cut to fit properly and other outstanding features are sponge cushioned heels with built-up arches and sanitary, non-friction insoles. Built for long service with durable molded gum soles as on the No. B50 leather soles. Stock sizes are 5 to 12. Price, per pair.....\$4.00 **\$2.75**

"MOR-PLA" SHOE

No. B57—A good serviceable shoe with double-ply black duck uppers and deep molded, black gum rubber soles that are especially durable. A scientifically built-in, cushion arch and heel with sanitary, sweat-proof insoles are features of real value for the price. Stock sizes, 4 to 12. Price, per pair.....\$2.85 **\$2.00**

"GYM SPECIAL" SHOE

No. B58—A light weight black canvas shoe that gives splendid service at low cost. Has durable crepe rubber soles and sanitary sweat-proof insoles with cushion heels. The toes are well protected for long wear. Stock sizes, 4 to 12. Price, per pair.....\$2.00 **\$1.45**

THE "PLAY" SHOE

No. B59—A durable black canvas shoe with molded rubber soles for general gymnasium or playground use. Sizes 6 to 11½. Price, per pair.....\$1.65 **\$1.15**

No. B59B—Same as above in sizes 2½ to 5½. Pair..\$1.55 **\$1.10**

BASKET BALL SHOE LACES

No. B355—White. Pair...10c **7c**

No. B356—Black. Pair...10c **7c**



No. B59—"Play" Shoe



WARM-UP SUITS

Special Styles to Order in About One Week



BRUSHED WOOL. Heavy knitted wool with elasticity. Worsted knit trim.

JOCKEY SATIN. Heavy rayon satin cotton reinforced back. Worsted trim.

(Cotton knit or fleece lining extra)

RAYON SATIN. Medium rayon faced cotton reinforced back. Durene trim.

GABERTEX. Sanforized, fast color twill. Durene ribbed knit trim.

NO. C705 PULL-OVER

No. C705A—Brushed Wool\$6.75	\$5.00
No. C705E—Jockey Satin	6.50 4.85
No. C705ER—Rayon Satin	5.50 4.10
No. C705C—Corduroy	4.75 3.45
No. C705S—Gabertex	3.75 2.75
No. C705M—Moleskin	3.35 2.50

NO. C740 PULL-OVER

No. C740A—Brushed Wool\$7.75	\$5.75
No. C740E—Jockey Satin	7.50 5.50
No. C740ER—Rayon Satin	6.50 4.75
No. C740C—Corduroy	5.35 3.95
No. C740S—Gabertex	4.35 3.25
No. C740M—Moleskin	3.85 2.85
No. C740L—Colored Cotton	2.50 1.85

NO. C738 PULL-OVER

No. C738A—Brushed Wool\$8.50	\$6.20
No. C738E—Jockey Satin	7.75 5.75
No. C738ER—Rayon Satin	6.00 4.50
No. C738C—Corduroy	5.35 4.00
No. C738S—Gabertex	4.75 3.50
No. C738M—Moleskin	4.00 3.00

NO. C739 PULL-OVER

Striped knit inserts; any two colors

No. C739A—Brushed Wool\$9.50	\$6.95
No. C739E—Jockey Satin	8.75 6.50
No. C739ER—Rayon Satin	7.00 5.25
No. C739C—Corduroy	6.50 4.75
No. C739S—Gabertex	5.75 4.25
No. C739M—Moleskin	4.75 3.50

NO. C744 PULL-OVER

Striped knit inserts; any two colors

No. C744A—Brushed Wool\$10.50	\$7.75
No. C744E—Jockey Satin	9.50 7.00
No. C744ER—Rayon Satin	7.75 5.75
No. C744C—Corduroy	6.75 5.00
No. C744S—Gabertex	6.00 4.50
No. C744M—Moleskin	5.00 3.75

RAYON KNIT WARM-UP

Rayon silk faced, cotton backed knit with a white cotton knit lining.

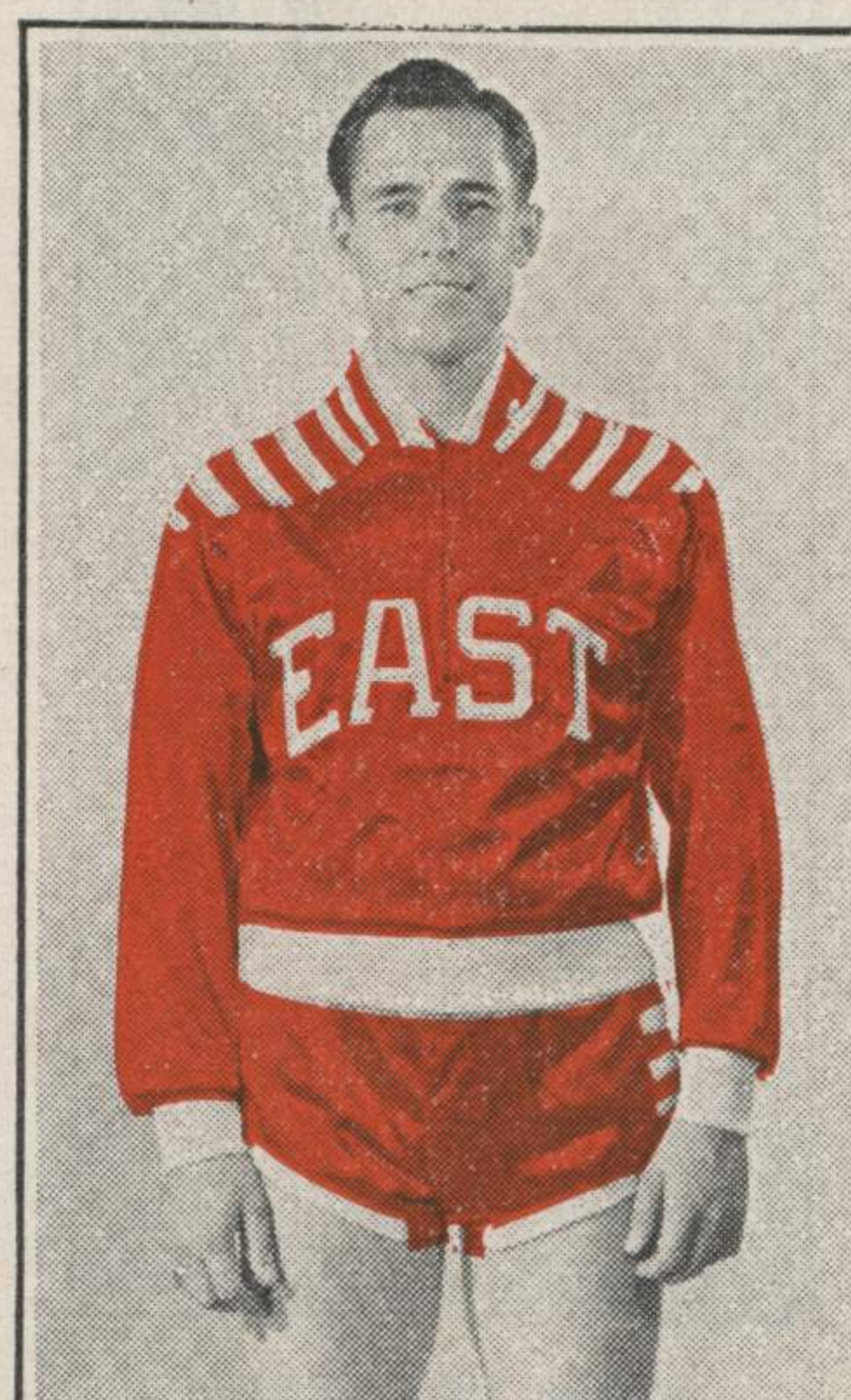
No. C730—Zipper pull-over with raglan sleeves; ribbed knit trim.....	\$3.25\$2.35
No. C733—Zipper coat with ribbed collar, bottom band and cuffs.....	\$3.85\$2.85
No. C735—Pull-over style similar to C705 with raglan sleeves.....	\$2.50\$1.85
No. C736—Knit Pants. Same material as above; elastic top and legs.....	\$2.50\$1.85



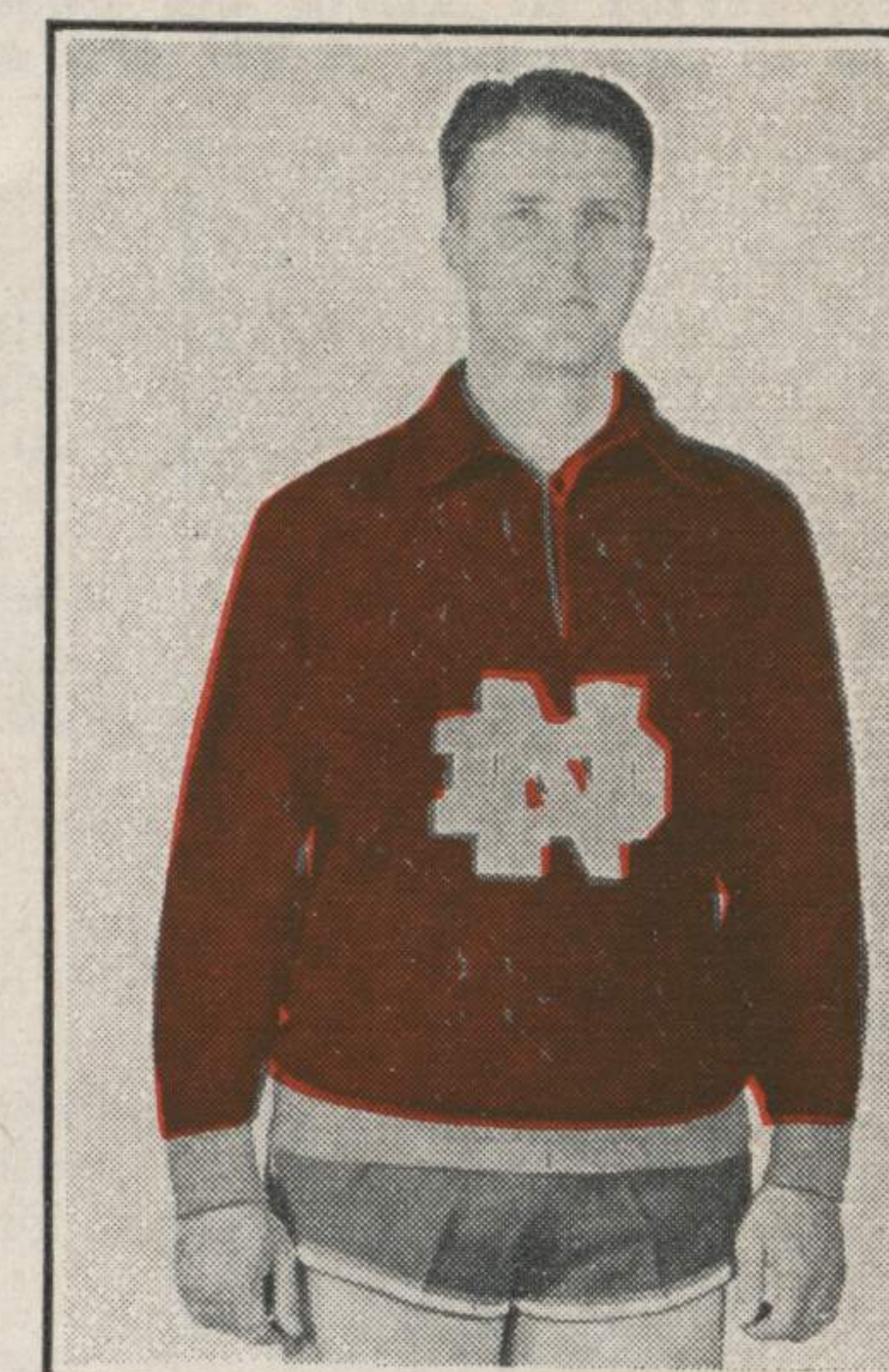
No. C705—Pull-Over



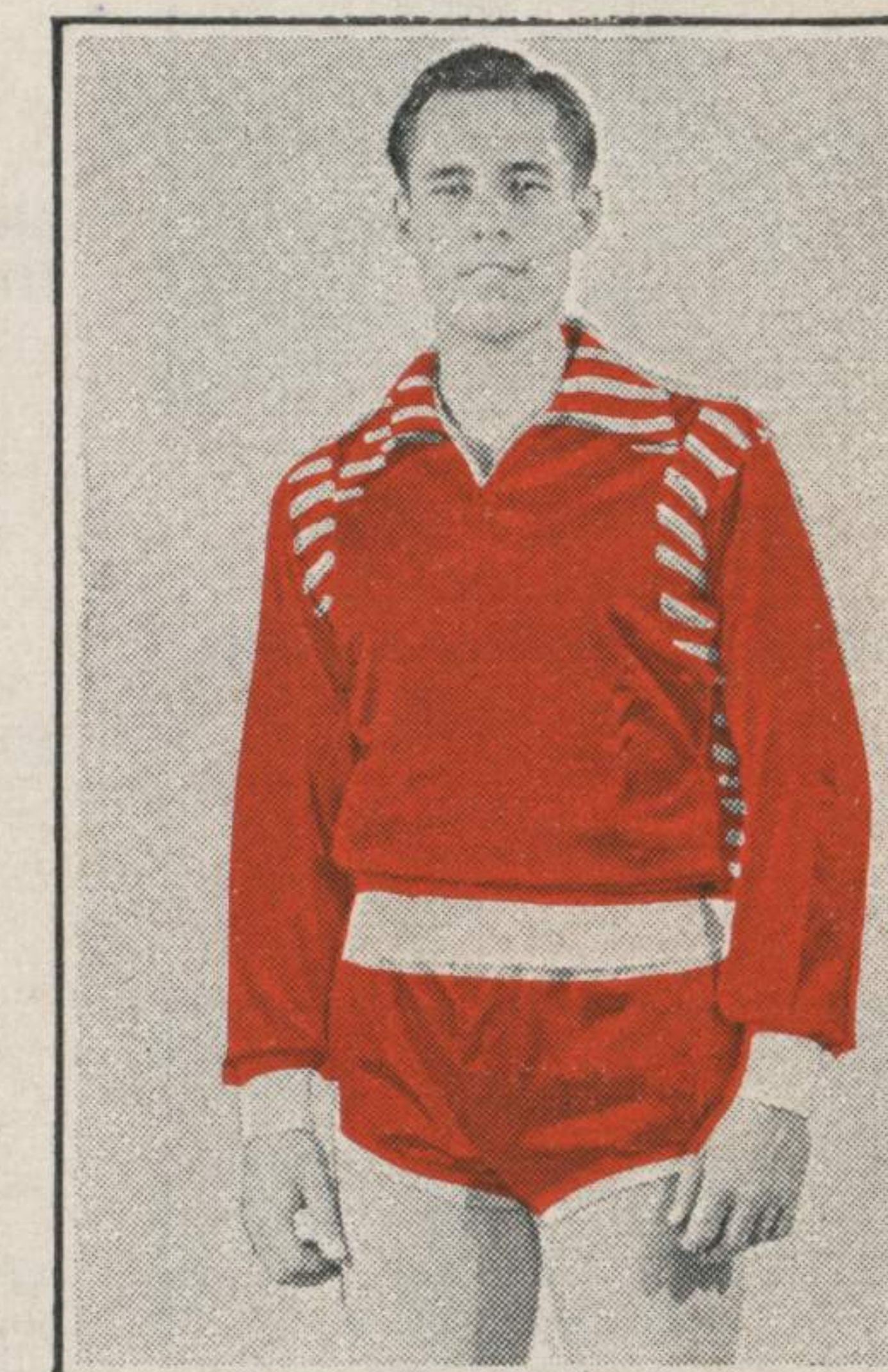
No. C738—Pull-Over (Pockets Extra)



No. C739—Pull-Over



No. C740—Pull-Over



No. C744—Pull-Over



No. C730—Knit Pull-Over

Wholesale Team Prices Shown In Red Do Not Include Postage

Wholesale Team Prices Shown In Red Do Not Include Postage