

from the **K. U. NEWS BUREAU**

■ KANSAS UNIVERSITY

■ LAWRENCE, KANSAS

■ K. W. DAVIDSON, Director

Engleman	20	+	19	=	39
Johnson	0	+		=	4½
Sanneman	10½	+	2½	=	13
Hogben	3	+	0	=	3
Hall	6½	+	14	=	20½
Allen	20	+	20	=	40
Kline	20	+	19½	=	39½
Breacher	0	+	½	=	½
Sellenb.	20	+	20	=	40

Coolley	20	+	20	=	40
Granv.	20	+	20	=	40
Haupt	18½	+	3½	=	22
Croucher	1½	+	11	=	12½
King	0	+	5½	=	5½
Hull	20	+	20	=	40
Moore	20	+	7	=	27
Hinds	0	+	13	=	13

FT-1111111

(2)

GAME (Kansas) vs Texas
2nd Half

DATE 12/10/40

16-9/ 9-3-12-3-9-15-9/ 15-16-9-16/
 15-12-15-16-9-15-12-3/ 4-15-16-9-4-16-9-16
 3/ 16-9-16-9-16-9-3/ 16-15-9-16-9/
 16-3-16-9-3/ 16- / 15-16-3-16-3-9-12/
 9-3-16-9-3/ 15/ 15-3/ 3-15/ 3-16-9-3
 -12-3/ 9-16-3/ 3/ 12-9-16-12-9-15-3
 16-9/ 3/ 9-15-3-9-12/ 9-15-12-16-12/
 15/ 3-9/ 3/ 3-9-16-9-3/ 3-15-9-16-
 9/ 16-9-3/ 15-12-16-15-16-9-15-12-9-16-
 15-2-9-12-9/ 9-16-9-2-9-16-9-2X/
 15-3-16/ 16-9-15-2-15-3-16/ 16-12X-/
 3-9X/ 3-9/ 15-16-3X/ 15/ 9-15-9-10-
 15/

J. K. Kern
 B. Brown

Free Throws - III

GAME (Kansas) ⁰ Texas

DATE Dec. 10, 1940

1st Half

3-9-4-3-15-9-4 / 15-4-15-16-9-16-9-4
 9-~~3~~ / 16-3-9-16-3-~~9X~~ / 16-3-9-4-~~16X~~
 4-3-15-~~9~~ / 3-4-~~9~~-~~3X~~ / 15-9-3-~~9X~~
 9-16-4-15-9-~~9~~-4 / 3-9-16-3-9-16-~~3~~
 15-4-9-3-9-3-~~4~~ / 16-~~9~~ / 15-9-15-9-
 4-9-15-9-16-4-9-~~3~~-~~16~~ / 9-15-9-~~3~~
 15-16-9-~~4~~ / 4-~~15~~ / 16-3-~~9X~~ / 16-3-4-3-
 9-4 / 15-9-16-4-~~9~~-3-~~9~~ / 3-16-~~3~~-4 /
 3-9-~~16~~ / 4-16-9-3 / 9-16-9-4-~~3~~-16-4-
~~3~~-4 / 9-16-15-16-20-~~16X~~ / 9-16-20
 9-~~20~~ / 3-15-3-~~15~~ / 16-15-3-15-9-~~16~~
 15-9-16 / 16 / 3-16-12-~~3~~ / 9-15-9-16-
 3-~~9X~~ / 3 / -15-16-3 / 3-16- / 9-15-9-~~12~~
~~12~~ / 12-3-~~9~~ / 9-~~3~~ / 3-9-16-15-16
 9-~~3~~ / ~~3~~ / 3-15-9-~~3~~ / 15-9-~~12~~
 12-3-~~9X~~ / 15-12-15-16-3-~~9X~~ / 3-9-15-3
 -15-9-16-9-12-3-9-16-15-12-~~3X~~
 3-9-~~3X~~ /

Score at half - 27

TEAM			TIME OUTS				
Player	No.	Pos.	1st HALF		2nd HALF		
			Goals	Fouls	Goals	Fouls	
Engleman	3		X ¹ ¹ X ¹ X ¹ ¹		¹ X ¹ X ¹ ¹ X		20
Allen	9		XXXXXX	P	X ¹	PP	14
Sanneman	4		00	PPP		P	0
Kline	16		XXO	PP		PP	4
Sollenberger	15			PP	¹ ¹	P	2
Hoghen	20						
Hall	12		¹	P	² X		5
Johnson					X		2
Brescher							

OPPONENT _____ OPPONENT'S SCORE _____

RUNNING	1	2	3	4	5	6	7	8	9	10	11	12	13	14	15	16	17	18	19	20	21	22	23	24	25	26	27	28	29	30	31	32	33	34	35	36	37	38	39	40	41	42	43	44	45	46	47	48	49	50	51	52	53	54	55	56	57	58	59	60	61	62	63	64	65	66	67	68	69
SCORE	1	2	3	4	5	6	7	8	9	10	11	12	13	14	15	16	17	18	19	20	21	22	23	24	25	26	27	28	29	30	31	32	33	34	35	36	37	38	39	40	41	42	43	44	45	46	47	48	49	50	51	52	53	54	55	56	57	58	59	60	61	62	63	64	65	66	67	68	69

TEAM			TIME OUTS				
Player	No.	Pos.	1st HALF		2nd HALF		
			Goals	Fouls	Goals	Fouls	
Cosley	27		XXX		¹ ¹ X	P	10
Stranville	24		X ¹ 0 ¹ 0 ¹ X ¹ ¹		X ¹ ¹ ¹ X ¹ X ¹ X ¹	PPP	24
Haupt	26		X ¹	PPP		P	3
Hull	25		¹ ¹ ²	P	O ¹ X	P	6
Moore	22		¹	P	X	PPP	3
Croucher	29				X		2
King							
Hines						P	

OPPONENT _____ OPPONENT'S SCORE _____

REFEREE _____

Goals X - Free Throws Made ¹ - Free Throws Missed ⁰

Personal Fouls P₁ P₂ Technical Fouls - T

GAME

Texas

Second Half

DATE

24-(25)/24-22-(27) (24)/(26)/25-22-27-22-26-32
 25-27-(22) 26-22-(25)/(25)/22-25-22-24-25
 24-/27-22-27-22-(25) (24) (27) 26-22-(25)/
 27-22-25-(28)/(27)/27-(25) (24) (27) 26-22-(25)/
 (24)/25-28-(27) (27)-25-24-(25)-27-32-
 28-25-(24) - 27-32-25-32-25-32-28
 25-28-25-32-24-27/27-32-25-28 (25)
 /24-32-28/27-32-25-(24)-/27-25-25-
 32-24-/27-32-25-(32)/24-25-34-(32)/
 (25) (24)/24-(25)/27-25-29-24-(29)/24-25-24
 32-29-25-(32)/27-25-32-29-24/29-25-32
 29-25-27-(25) (24)/(24)/24-(32)/24-25-24-32-
 25-32-25-27/25-29-32-29-25-(24)/
 32-27-25/25-29-32-24-32-(29)/(25)/25-29
 32-24-29-25/32-25-24-(32)-32-24-(32) (27)
 25-29-32-29-25-24-32-29-32-25-29-24-27-
 (29)/27-29-32-29-25-27-24-32-29-25-32-
 (24)/32-29-25-29-32-29-32-25/yr
 27-32/32-29-32-29-(32) (25)

GAME

(Texas) - Kansas

DATE

Dec. 10, 1940

22-25-27-22-25-22 / 22-27 / 22-25
 25 / 26-27-25-24-25-24-25 /
 21-25-24 / 22-25-27-25-20-25-20-
 25-27-25-22-25-24-25-24 / 25-22-
 36-25-22-26-22-25-22-25-26 /
 25-22-24 / 22-25 / 24 / 26-22 / 22-25-22-25 /
 24-25-22-25-22-25-24-22-24 / 22- /
 24-25-22-26 / 22-25-22-25-24-26-25 /
 22- / 26-25- / 25-22-24 / 26-22-22-22
 27 / 27-25-22-26 / 22-26-25-24-22-
 25- / 22-25-24-27-22-25-24 /
 27-25-24 / 22-25-27-25-24 /
 26-27-25-27-25-22-27-22-26
 25-24-27-22-25 / 26-22-25-
 26-27- / 22-25-26- / 27-22-25-
 27-27- / 27-25-22-25-24-25-27-25
 26 / 22-25-22-25-26-25 /
 27-22-25-22-25-22-25-22-24-
 26-25-24-27 / 24 / 22-25-22-25-
 22-27-22-25-27 / 27-25-29-22-25-22-
 25 / 27-24-25-24 / 27-22-22-24-24

GAME TEXAS

DATE 12/10/40

- 1. Recovery of ball off own backboard 27-25-27-26-26-27-26-27-27-26-27-24/
26-24-26-25-24-24-24-24-27-32-32-27
- 2. Recovers ball off opponents backboard 27-25-26-26-22-26-22-26-24-22
26-27-22-27-26-26-27/25-27-27-24-27-24-24-24-24
- 3. Fouling opponent with ball 25¹-26¹-26²-22¹-26³/22²-22³-22⁴-27-24-24²-32-29-24
- 4. Fouling opponent without ball 26⁴
- 5. VIOLATION 22-26-26-27-25/28-27-32-32
- 6. Offensive personal fouls/
- 7. Blocking opponents shot/
- 8. Intercepting opponent's dribble 25
- 9. Intercepting opponent's pass 26/24
- 10. Recovers Jump Ball 24-25-27/24-24-28-28-27-24

GAME Kansas

DATE December 10, 1940

1. Recovery of ball off own backboard 4-3-4-3-4-16-9/3-2-2-3

2. Recovers ball off opponents backboard 16-16-16-9-15-15-15-15/16-16-16
12-15-3-15-3-9-15-3-16-15

3. Fouling opponent with ball 4-4-15-9-12-16/4-15-9

4. Fouling opponent without ball 15-16/9-16-

5. VIOLATION 3-9/16-4-3-12-9-9-3-3-15-

6. Offensive personal fouls 4/

7. Blocking opponents shot 15⁰⁰

8. Intercepting opponent's dribble 9-16/15-12-15-

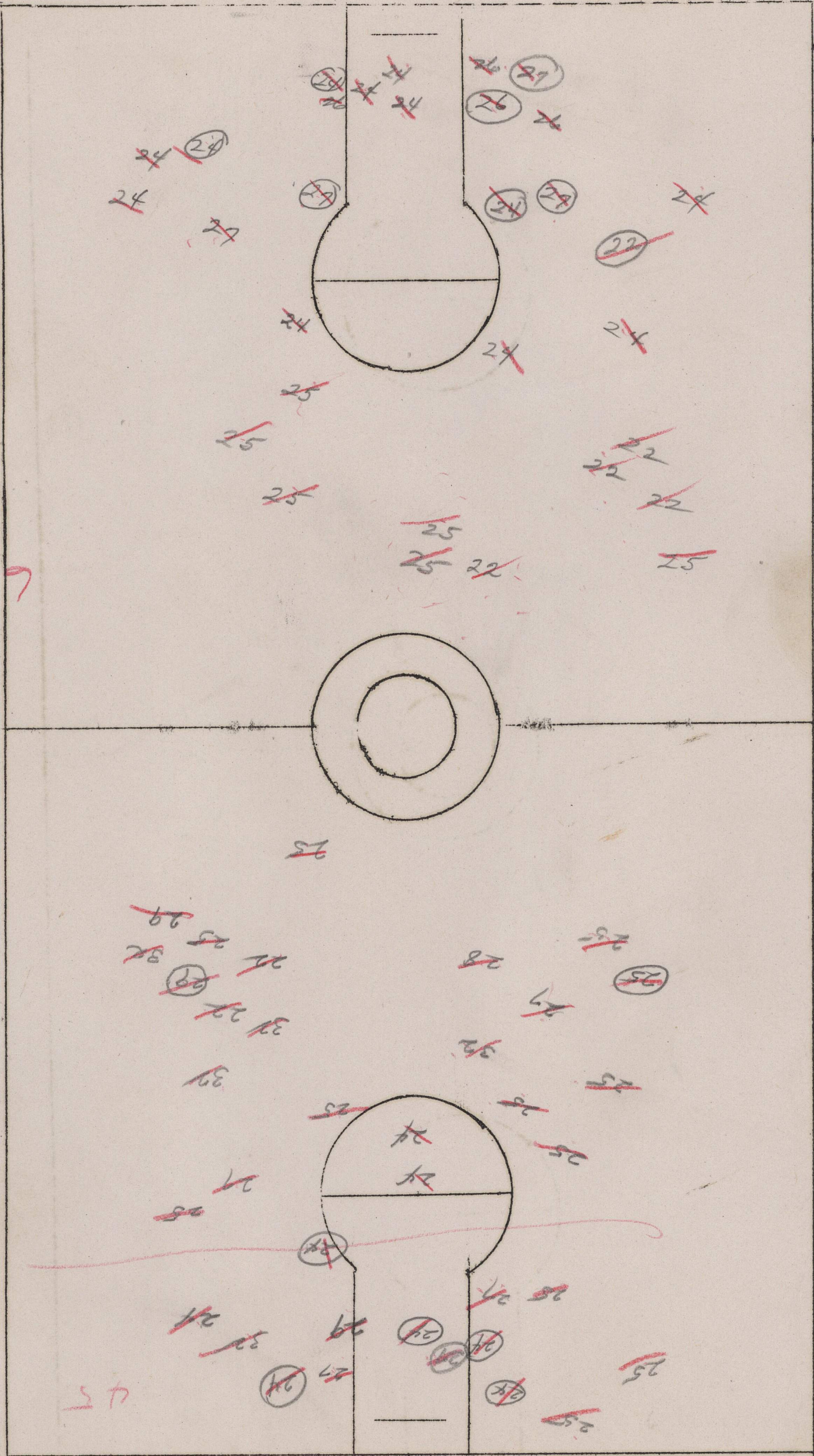
9. Intercepting opponent's pass 16-9-16-12/15-12-12-2

10. Recovers Jump Ball 3-16-3-3/9-9

1st Half

69

45



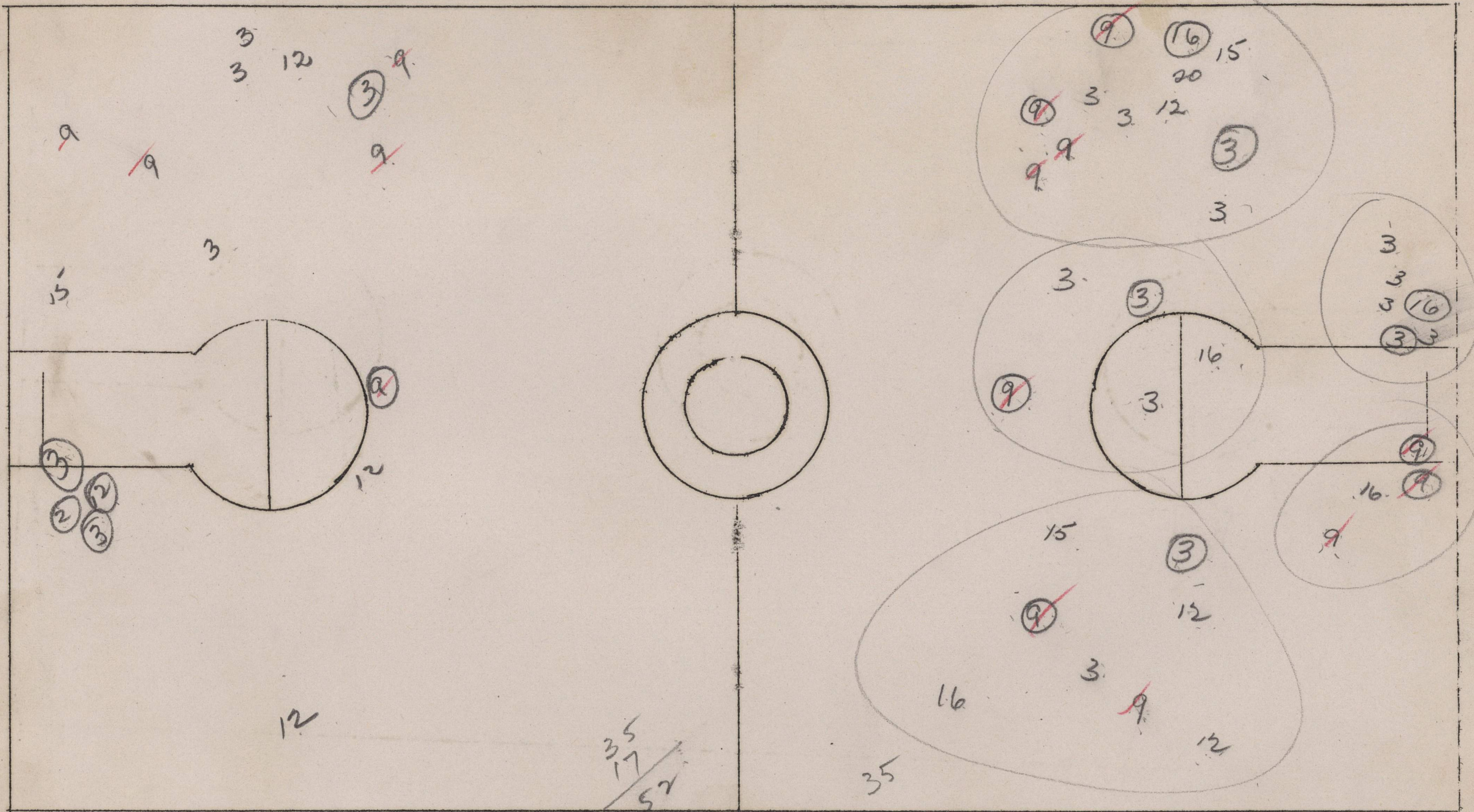
- Granville - 24
- Cooley - 27
- Haupt - 26
- Hull - 25
- Moore - 22
- Croucher - 29
- Brahoney - 23
- King - 28
- Hinds - 32
- Dillon - 36
- Hailey - 34
- Price - 35

2nd Half



2nd

1st 35



35
17
52

+ Engdman 3° 11' |||
 ****+ Gunneman 40°
 +++ Allen 9°
 *** Sollerberger 15° ||
 ****+ Kline 16°

Hogden 20
 + Hall 12° ||