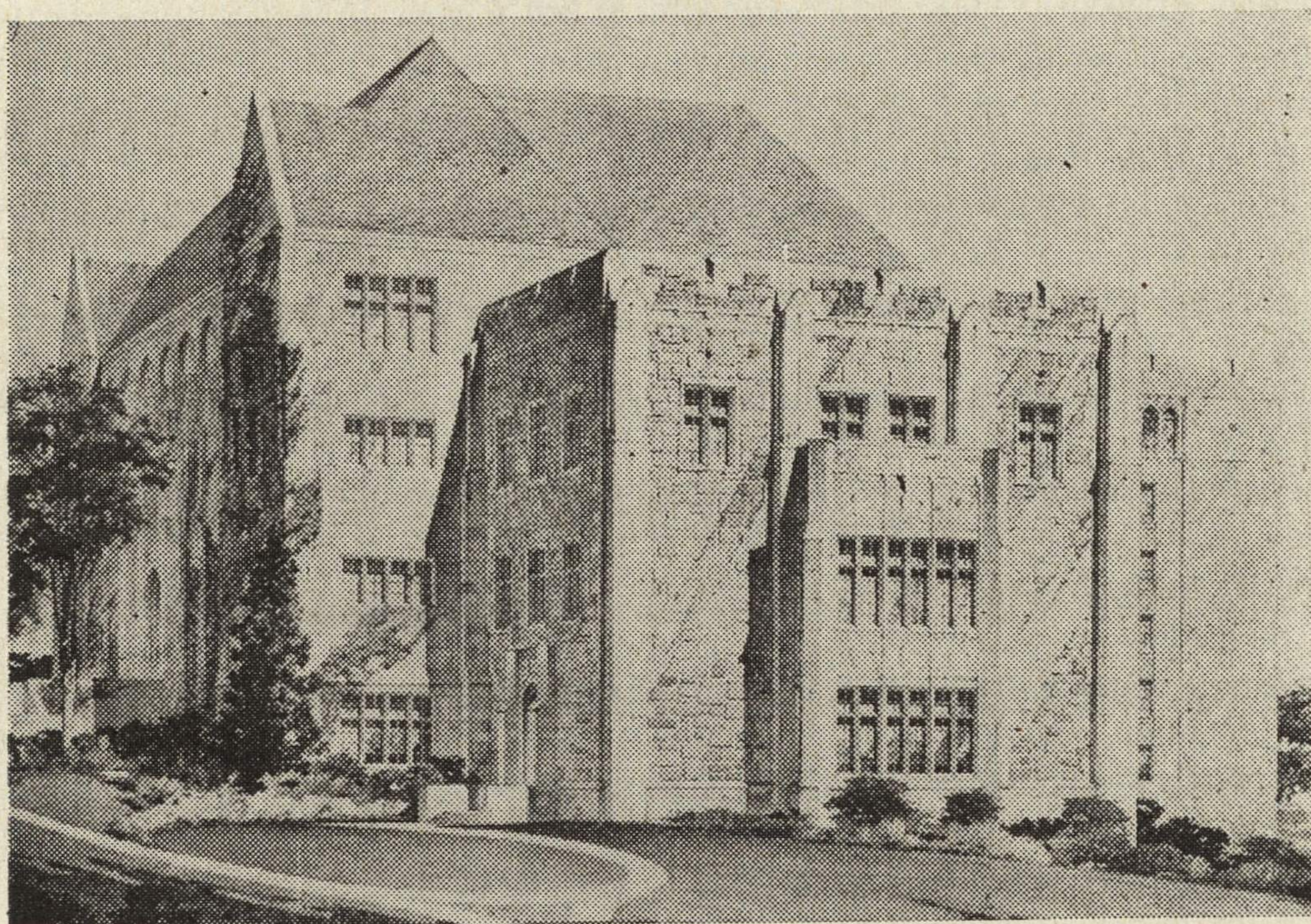


wiring, and lighting improvement. The list of such needs enumerated by the Superintendent of Buildings and Grounds exceeds \$100,000.

19. GRADING AND LANDSCAPING MINERAL RESOURCES BUILDING. A special item of \$5,000 is requested for grading, landscaping and constructing sidewalks around the new Mineral Resources building. These improvements are needed to give the fine new building a proper setting and make it readily accessible to students, faculty, and visitors.

20, 21, 22. NEW BUILDINGS. Three special building appropriations are requested to provide an addition to the Watson Library, a new engineering shop, and the remodeling of Fowler hall for journalism. The amount requested in each case is the State Architect's estimate of cost.



WATSON LIBRARY WITH STATE ARCHITECT'S SKETCH OF THE PROPOSED STACK WING

a. *Addition to Watson Library, \$200,000.* An addition to the Watson library is the most urgent building need of the University. When the building was opened in 1924 the book stacks were inadequate to accomodate the University book holdings. In the twenty years since that date nearly 200,000 volumes have been added to the holdings, and the surplus over stack capacity has been handled by placing books on temporary stacks in public corridors, by overcrowding on stack shelves, by storing 50,000 volumes in a sub-basement room excavated for that purpose, by placing books on extra shelves in reading rooms, and by storage in and overcrowding of branch libraries. Approximately 85,000 books are either in storage or so out of order as to be unavailable. No room exists for new or additional books without placing more books in storage.

To remedy this situation and to provide much-needed additional reading and reference rooms, it is proposed to extend Watson library to the west, in conformity with the original building plans of the State Architect.