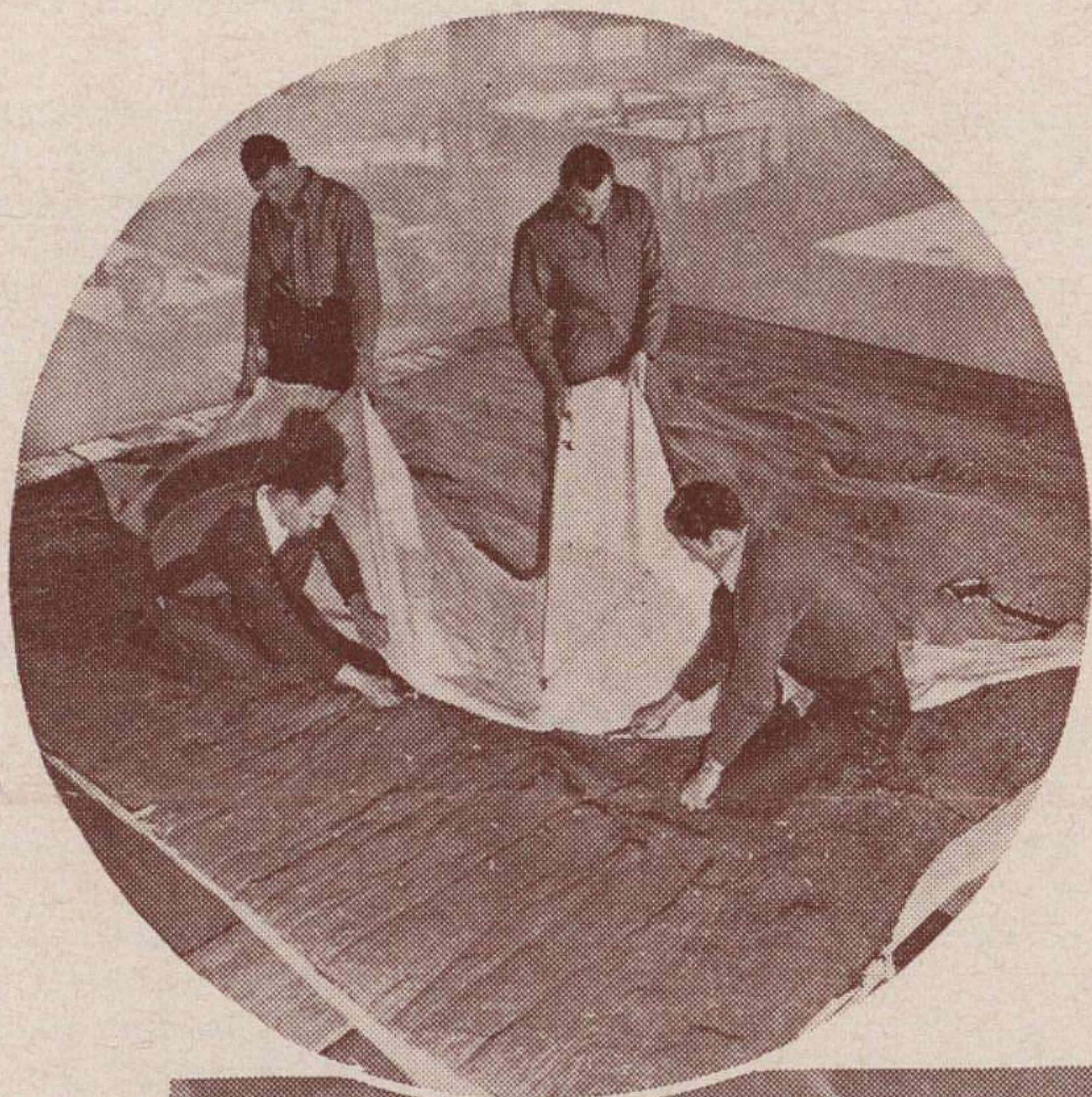


Here is how a mat is rebuilt



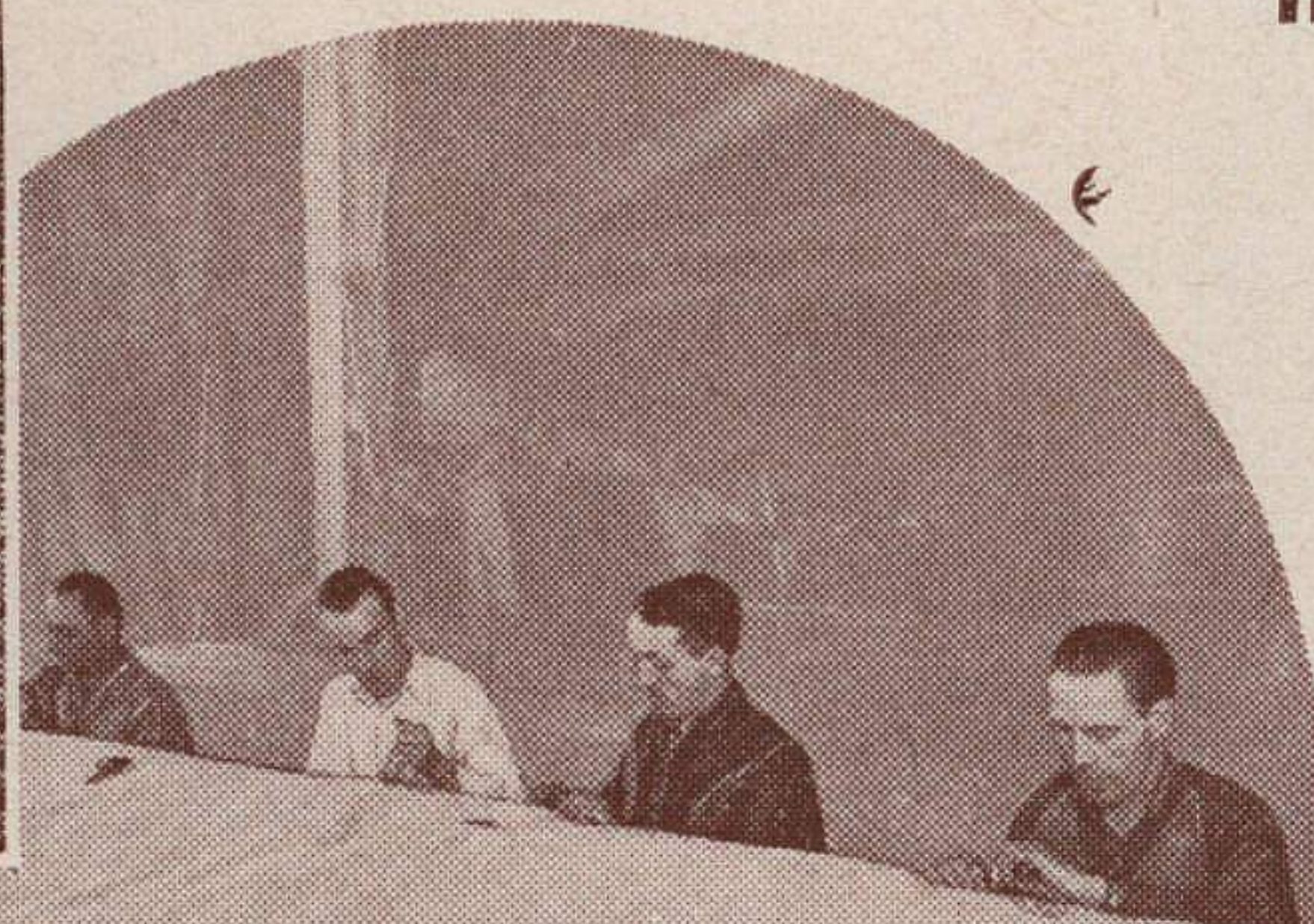
1.

The old covering, tufts and handles are entirely removed.



2.

The felt is cleaned and trimmed.



3.

The new canvas is put on; with seams of the hidden type; mat edges square. Mostly hand-work.

*One of the outstanding features of an ATLAS ATHLETIC rebuilt mat is the "rooted" handle. This new style of heavily reinforced handle is not only sewed and riveted to the edges of the mat, but actually extends **into** the mat, like the root of a tree. There it is held by additional tufts; thus an entire section of the mat would have to go before the "rooted" handle could pull out.



4.

The mat is completely retufted with extra strong tufts; beeswaxed; triple-knotted.* "Rooted" handles are affixed. Finest workmanship throughout.

Always Address Mail and Inquiries

ATLAS ATHLETIC EQUIPMENT COMPANY

4439 Manchester Avenue

St. Louis, Mo., U. S. A.