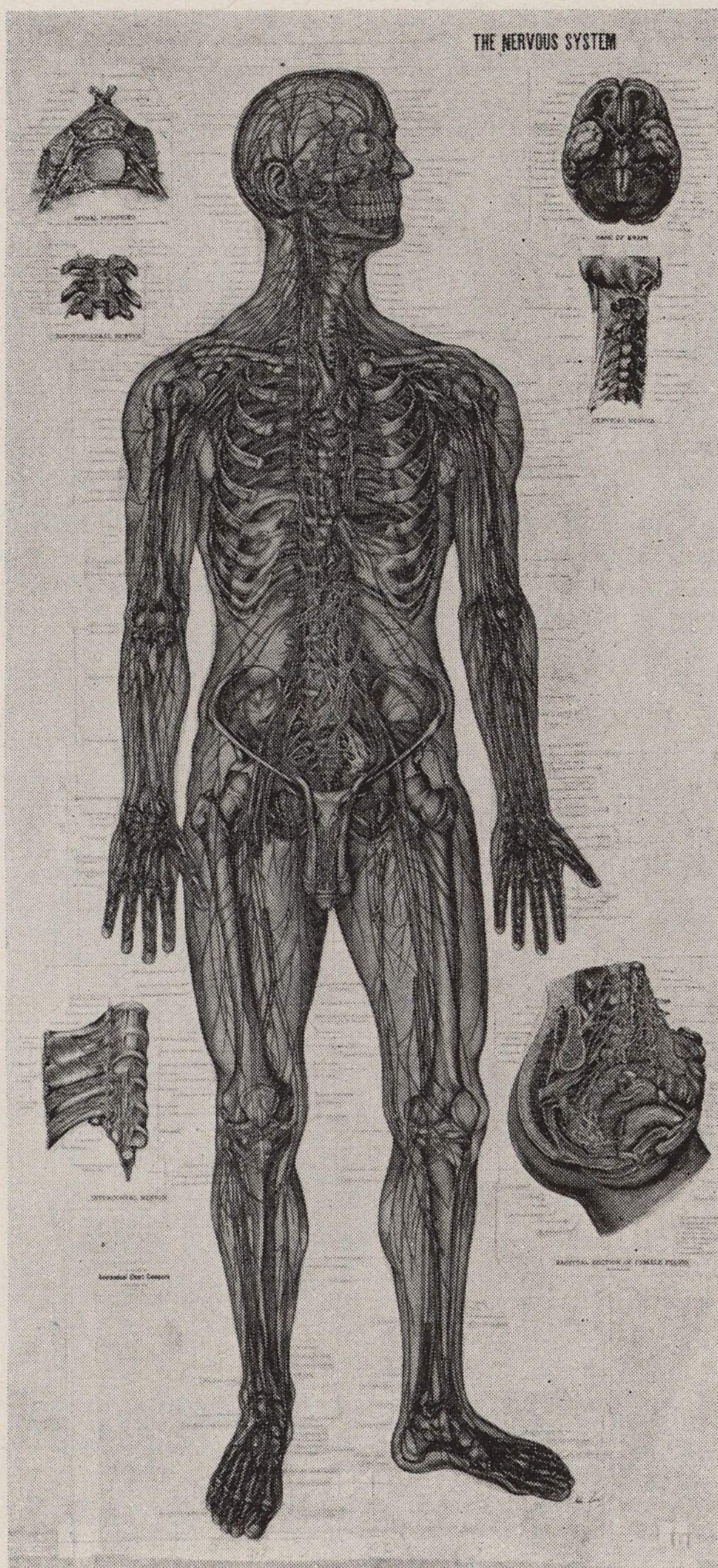


This chart was designed and edited by Peter Bachin, who combines in a rare way a knowledge of human anatomy with the skilled craftsmanship of an artist. During his travels introducing the Bachin Chart of the Vascular System and lecturing on it, he was requested by leading anatomists, biologists and heads of hospital training schools to take up the task of producing a chart of the nervous system. Much study and research went into its preparation. Not only has no chart of equal scope ever before been available but many of the structures pictured on this Chart of the Nervous System cannot be found in any textbook. A careful study of this chart is the best preparation for work at the dissecting table. For example, using this chart one can easily trace the sympathetic system from the cephalic down through its cervical, thoracic, abdominal and pelvic portions to the caudal end where both its trunks converge in a single ganglion, the ganglion impar.



The simple reproduction shown here can do no more than suggest the size, beauty, and exquisite detail of the actual chart, and it omits one of the most important EXCLUSIVE features of the "Bachin Chart of the Nervous System": EVERY NERVE AND STRUCTURE IS LABELED IN FULL DETAIL RIGHT ON THE FACE OF THE CHART, a simplification that does away with the inconvenience of key books or other reference in study and teaching.

THE NERVOUS SYSTEM

The enormous expense of engraving plates and lithographing in colors is justified by the clarity. This chart represents a complex subject which the average student of anatomy has always found difficult to visualize. The principal figure is life size. An ingenious use of color clearly distinguishes the physiological function of the entire Nervous System, male and female—the Voluntary System in yellow, the Involuntary (Sympathetic) System in light grey, and the Involuntary (Parasympathetic) System in light blue. **NO OTHER CHART INCLUDES ALL THREE.** Exception: The Vagi nerves, which contain mixed fibers, and the other Cranial nerves are shown in yellow to avoid confusion and for better artistic contrast. In addition, the "Bachin Chart of the Nervous System" includes the entire skeleton and, in the most important regions, for relation, the blood vessels, muscles and ligaments. Six (6) special insets on the same chart include:

- 1—Lateral view of the female pelvis, with its organs and nerve supply.
- 2—The base of the brain and cranial nerves.
- 3—A Lateral View of the cervical Vertebrae and cervical nerves.
- 4—A section in four levels between the 3rd and 4th cervical Intervertebral disc, to show the Meninges.
- 5—A longitudinal posterior section of the Thoracic Vertebrae, to show the sinuvertebrae nerve.
- 6—An anterior section of the Thoracic Vertebrae to show the origin of the thoracic intercostal nerve.

You must see it for yourself!

PRICES AND DETAILS OF
OUR "ON APPROVAL"
OFFER ON NEXT PAGE