

ALLEN MOORE, President  
 ROY MOORE, 1st. Vice Pres.  
 RALPH L. MOORE, 2nd. Vice Pres.  
 P. E. NEWELL, Dean  
 LELAND S. WOOD, Exec. Secy.  
 EDNA B. BRYANT, Treasurer  
 NELLIE VOELKER, Correspondent  
 E. M. ROBERTS, Supt. Personnel  
 and Employment Department



I. W. LIVELY, Field Secretary  
 GEO. W. BECKLER, Field Secy  
 MAX S. PHILLIPS, Registrar  
 W. W. TOWNSEND, Credit Mgr.  
 T. E. LAIL, Athletic Director  
 BOB WHITE, Coach  
 ANNA S. HAWKINS, Alumni Secy.  
 W. S. FAVER, Superintendent  
 of Bd. Dept. and Dormitories

# CHILLICOTHE BUSINESS COLLEGE

LARGEST PLANT IN AMERICA DEVOTED EXCLUSIVELY TO BUSINESS EDUCATION

CHILLICOTHE, MISSOURI

November 25, 1942

Mr. Forrest C. Allen,  
 Coach, University of Kansas,  
 Lawrence, Kansas.

Dear Mr. Allen:

Knowing you are interested in our new Army Clerical School set-up and the changes made necessary in the regular school, I am enclosing copy of our form letter which was sent out this week to the girls in our prospective student file. I apologize for the length of the letter (may keep you up late at night reading it) but it is the easiest way I can get this information to you.

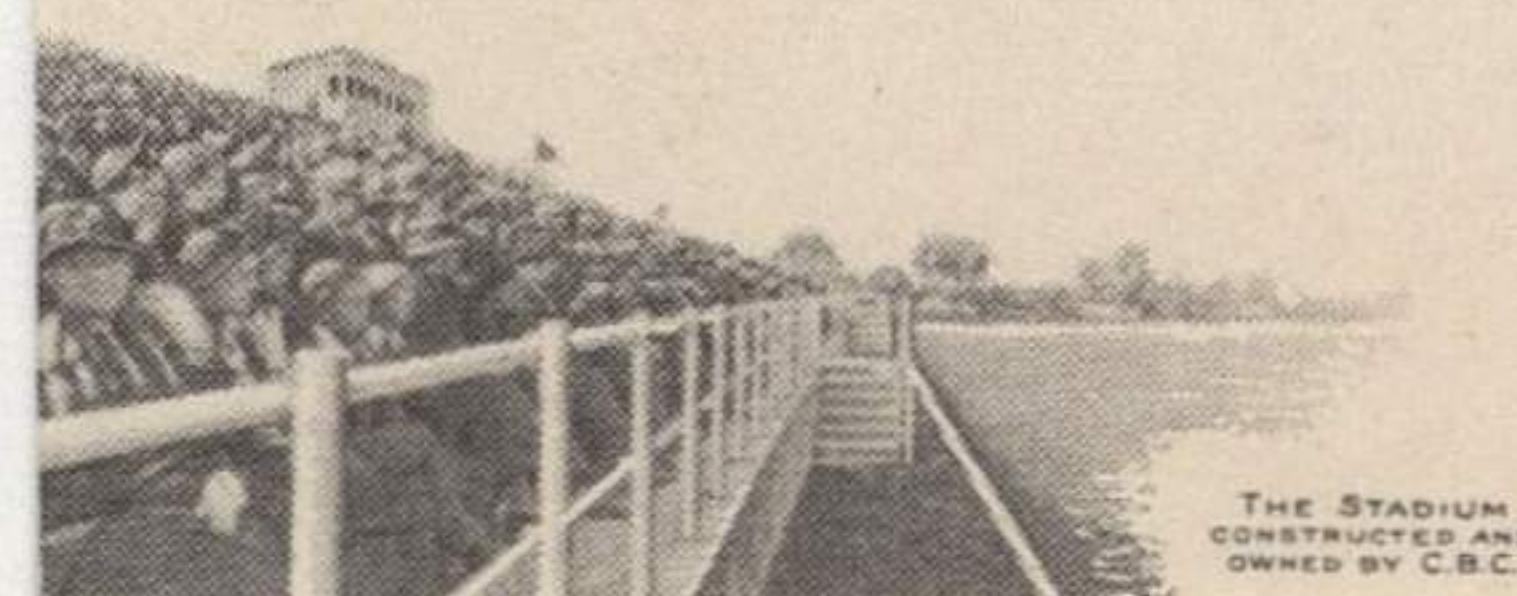
We have had to take some raps and have had plenty of headaches in setting up this program, but we are happy in the recognition which has come to us and are enthusiastic in doing the best job possible.

Drop in and see us sometime.

Yours most sincerely,

*Allen Moore*  
 President.

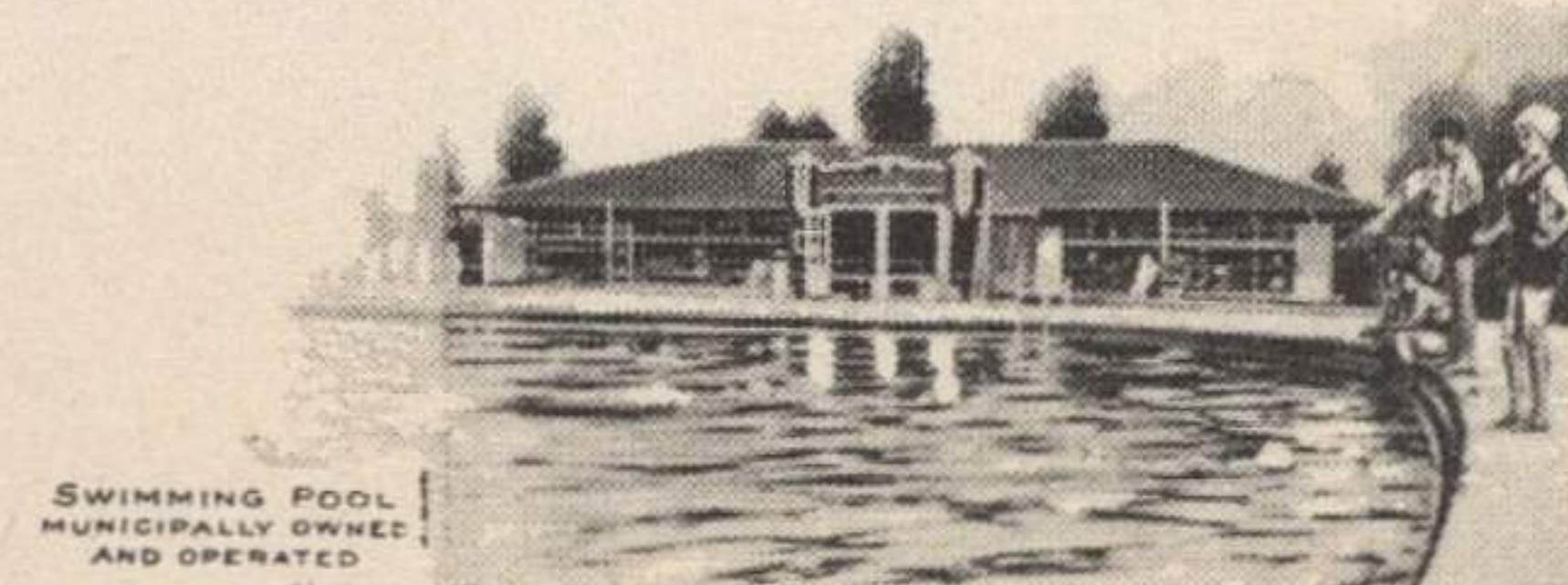
AM:lfb



THE STADIUM  
 CONSTRUCTED AND  
 OWNED BY C.B.C.



THE OLD ARCH



SWIMMING POOL  
 MUNICIPALLY OWNED  
 AND OPERATED