

WESTERN UNION

Kansas City, Mo.  
January 23, 1940.

Dr. Forrest C. Allen.

May I have three tickets for game tonight?

Regards.

Parke Carroll,  
K. C. Journal Post.



CLASS OF SERVICE

This is a full-rate Telegram or Cablegram unless its deferred character is indicated by a suitable symbol above or preceding the address.

# WESTERN UNION

1201

SYMBOLS

DL = Day Letter

NL = Night Letter

LC = Deferred Cable

NLT = Cable Night Letter

Ship Radiogram

R. B. WHITE  
PRESIDENT

NEWCOMB CARLTON  
CHAIRMAN OF THE BOARD

J. C. WILLEVER  
FIRST VICE-PRESIDENT

The filing time shown in the date line on telegrams and day letters is STANDARD TIME at point of origin. Time of receipt is STANDARD TIME at point of destination

KAD59 30 DL=INDIANAPOLIS IND 13 456P

1940 MAR 13 PM 5 32

DR FORREST C ALLEN=

ATHLETIC DEPT UNIVERSITY OF KANSAS

CONGRATULATIONS ON THE PLAYOFF. DONT LET THE BOYS STOP

NOW. TAKE THE RUBBER GAME FROM THE AGGIES AND GET TO

KANSASCITY BEST OF LUCK TO YOU AND ALL THE BOYS=

STEW CHAMBERS.

*adse*  
*R-532R*



CLASS OF SERVICE

This is a full-rate Telegram or Cablegram unless its deferred character is indicated by a suitable symbol above or preceding the address.

# WESTERN UNION

1201

(01)

SYMBOLS

DL=Day Letter

NL=Night Letter

LC=Deferred Cable

NLT=Cable Night Letter

Ship Radiogram

R. B. WHITE  
PRESIDENT

NEWCOMB CARLTON  
CHAIRMAN OF THE BOARD

J. C. WILLEVER  
FIRST VICE-PRESIDENT

The filing time shown in the date line on telegrams and day letters is STANDARD TIME at point of origin. Time of receipt is STANDARD TIME at point of destination

KA492 44 DL=LAWRENCE KANS 12 230P

1940 MAR 12 PM 3 02

KANSAS UNIVERSITY BASKETBALL TEAM=

CARE DR F C ALLEN ALLIS HOTEL WICHITA KANS=

MY BEST WISHES FOR VICTORY TO YOU ALL TONIGHT. DICK HARP,  
DUCKY EBLING, BOB ALLEN, RALPH MILLER, JOHN KLINE, BRUCE  
VORAN, COTTON ENGLEMAN, T P HUNTER, BILL HOGBEN, JACK SANDS,  
BOB JOHNSON, D NESMITH, DR F C ALLEN. SORRY NOT TO BE WITH  
YOU=

OWEN CARL.



# KANSAS CITY JOURNAL

DAILY AND SUNDAY

ORVILLE S. MCPHERSON  
PRESIDENT & PUBLISHER

RUSSELL H. MILES  
VICE PRESIDENT & GEN. MANAGER

J. C. JOHNSEN  
VICE PRESIDENT & EDITOR

KANSAS CITY, MISSOURI

March 7 [1940]

Dr. F.C. Allen  
University of Kansas  
Lawrence, Kas.

Dear Dr. Allen:

Letters are being mailed to basketball officials in various sections of the country, asking for opinions on the rules and informing them of meetings to be held at 5 p.m. March 29 and 2 p.m. March 30.

Dick Pendleton, president of the Midwestern Intercollegiate Officials Association and E.C. Quigley, a member of the board of directors, will be asked to submit officials' suggestions to the national rules committee.

Incidentally, I am leaving from Norman to pick up the Kansas City Baseball Club in spring training at Haines City, Fla. However, I will be happy to return late in April if I can be of any assistance as an official in the N.C.A.A. finals.

With kindest regards,

Sincerely,

 Park Carroll



THE ASSOCIATED PRESS  
KANSAS CITY, MO.  
STAR BUILDING

MARCH 4, 1940

DR. FORREST C. ALLEN  
BASKETBALL COACH  
UNIVERSITY OF KANSAS  
LAWRENCE, KANSAS

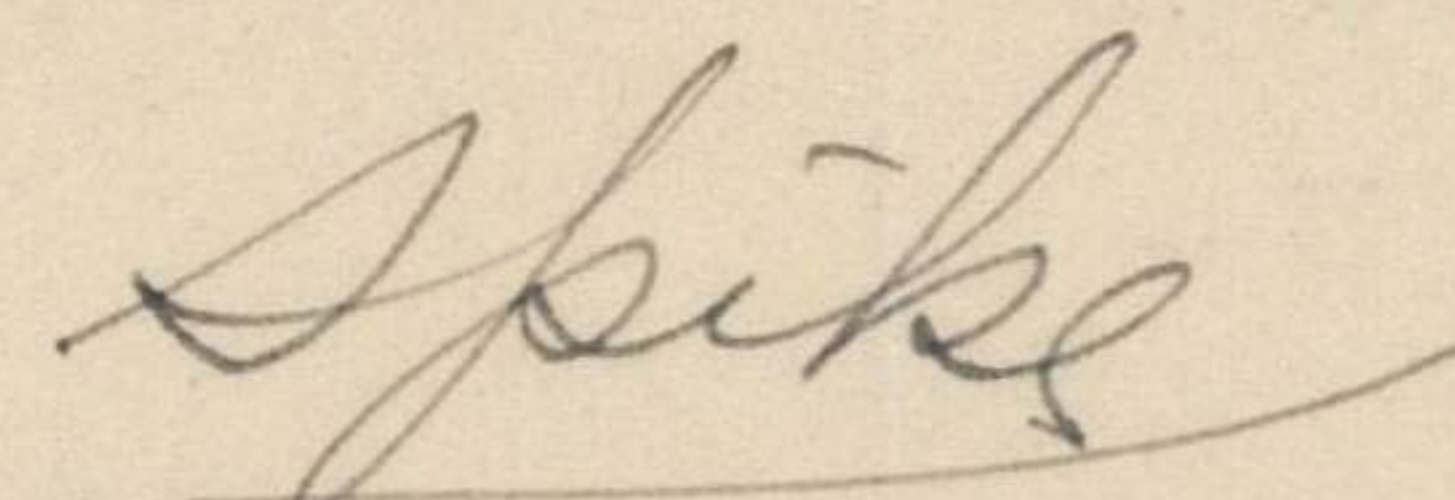
DEAR DR. ALLEN:

THANKS FOR YOUR KIND NOTE. I WAS LUCKY----BUT WHY DID HARP HAVE TO SINK THAT  
FREE THROW AFTER THE GAME WAS OVER? I'D BEEN A KING IF HE HAD MISSED.

I HOPE I NEVER HAVE TO WRITE ABOUT HORSE RACING OR BOXING----TWO SPORTS I  
THINK ARE LOWER THAN KANSAS CITY POLITICS.

I TRIED THE "SYSTEM" AGAIN ON THE OUTCOME OF THE OKLAHOMA-KANSAS GAME. IT  
FORECASTS A KANSAS DEFEAT. HERE'S HOPING THAT CONFUCIUS AND CLAASSEN ARE  
IN THE SAME BOAT---WE TALK TOO DAMN MUCH.

SINCERELY YOURS,



REGIONAL SPORTS EDITOR

HAROLD CLAASSEN:B



EDNA McCULLOUGH, PRES.-ELECT  
KANSAS STATE TEACHER'S COLLEGE  
EMPORIA

SUE UNRUH, VICE-PRESIDENT  
NORTHWEST JUNIOR HIGH  
KANSAS CITY

NATIONAL COUNCIL MEMBERS  
ARDIS HILL, KANSAS CITY  
RUTH HOOVER, LAWRENCE

# Kansas Health and Physical Education Association

ORAN SHEARER, PRESIDENT  
ALLISON INTERMEDIATE  
WICHITA, KANSAS

March 3, 1940

L. P. WASHBURN, EDITOR  
KANSAS STATE COLLEGE  
MANHATTAN

EVA LYMAN, SEC'Y.-TREAS.  
HIGH SCHOOL NORTH  
WICHITA

DISTRICT COUNCIL MEMBERS  
HELEN G. SAUM, MANHATTAN  
C. S. MOLL, MANHATTAN  
ORAN SHEARER, WICHITA

Dr. Forrest Allen, Director  
Physical Education for Men  
University of Kansas  
Lawrence, Kansas

Dear Dr. Allen:

The Kansas Health and Physical Education Association wishes to invite you and your majors to attend the coming convention of the Central District Association for Health, Physical Education and Recreation. This convention will convene in Wichita March 27-30.

The Kansas Association feels this will be valuable to student since they will get a general view of Physical Education trends in the middle west. National known speakers will be on the general programs to bring the latest views on Health, Physical Education and Recreation.

Dr. S. C. Staley, U. of Illinois, will speak on "Sports Education with a Bound" Dr. Staley is a games man and I am sure students will be glad to see and hear the person who has compiled so many of the games they are using.

Mr. Ott Romney, Director of Recreation, W.P.A. Washington, D.C. will bring us the modern trends in Recreation thru-out the United States.

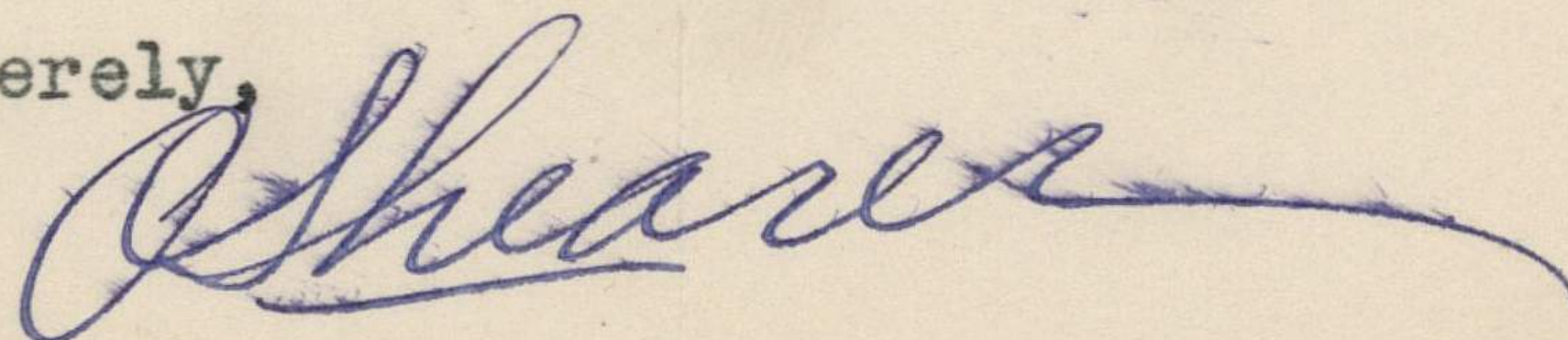
Mr. Douglas Miller, U. of Denver, will speak on "Education of Nazi Youth" Mr. Miller will give us something to think about with his comparison of coming events.

Student registration fee appears in the March issue of the Kansas Health and Physical Education bulletin.

A few of the desirable hotels listing student rooms are :

Allis-200 S. Broadway--(Headquarters Hotel)----- \$2.50 and up  
McClellan--201 S. Broadway---10 or more students--75¢- less--- \$1.25  
Lassen-----155 N. Market----(3 blocks from Allis)-----\$1.00 and \$1.25  
Broadview--101 N. Waco----- (6 blocks from Allis)-----3-4 to room 1.00  
Eaton-----523 E. Douglas---(4 blocks) 75 ¢ without bath, \$1.00 with

Sincerely,



O. Shearer-Pres.



March 2, 1940.

Mr. Harold Classen,  
The Associated Press,  
Star Building,  
Kansas City, Missouri.

Dear "Spike":

You are getting to be a real dopester! You certainly came close when you said that we would win over Missouri by one point.

You are getting many plaudits from the people around here - they think you ought to take up the ponies!

With all good wishes, I am

Very sincerely yours,

FCA:AH

Director of Physical Education and Recreation,  
Varsity Basketball Coach.



March 2, 1940.

Mr. Lyman Corlis,  
City Finance Company,  
609 Merchant St.,  
Emporia, Kansas.

Dear Lyman:

I read your wire to the boys last night, and they all greatly appreciated it. It was a great inspiration to them.

I am sorry you couldn't be here to see the game, but we are glad the boys could win for you and other loyal supporters.

With best wishes, I am

Very cordially yours,

Director of Physical Education and Recreation,  
Varsity Basketball Coach.

FCA:AH





BY  
**WESTERN UNION**

COPYRIGHTED 1937 BY WESTERN UNION TEL. CO.

KAD116 10=EMPORIA KANS 1 732P

KANSAS UNIVERSITY BASKETBALL TEAM=

DLR AT HALF HOCH AUDITORIUM KR=

LET'S GO GANG. BETTING ON YOU. FIGHT LIKE THE DEVIL=

LYMAN CORLIS.

*City Finance Co.  
 609 Merchant St.*



February 28, 1940.

Clay-Adams Company,  
25 East 26th Street,  
New York City, N.Y.

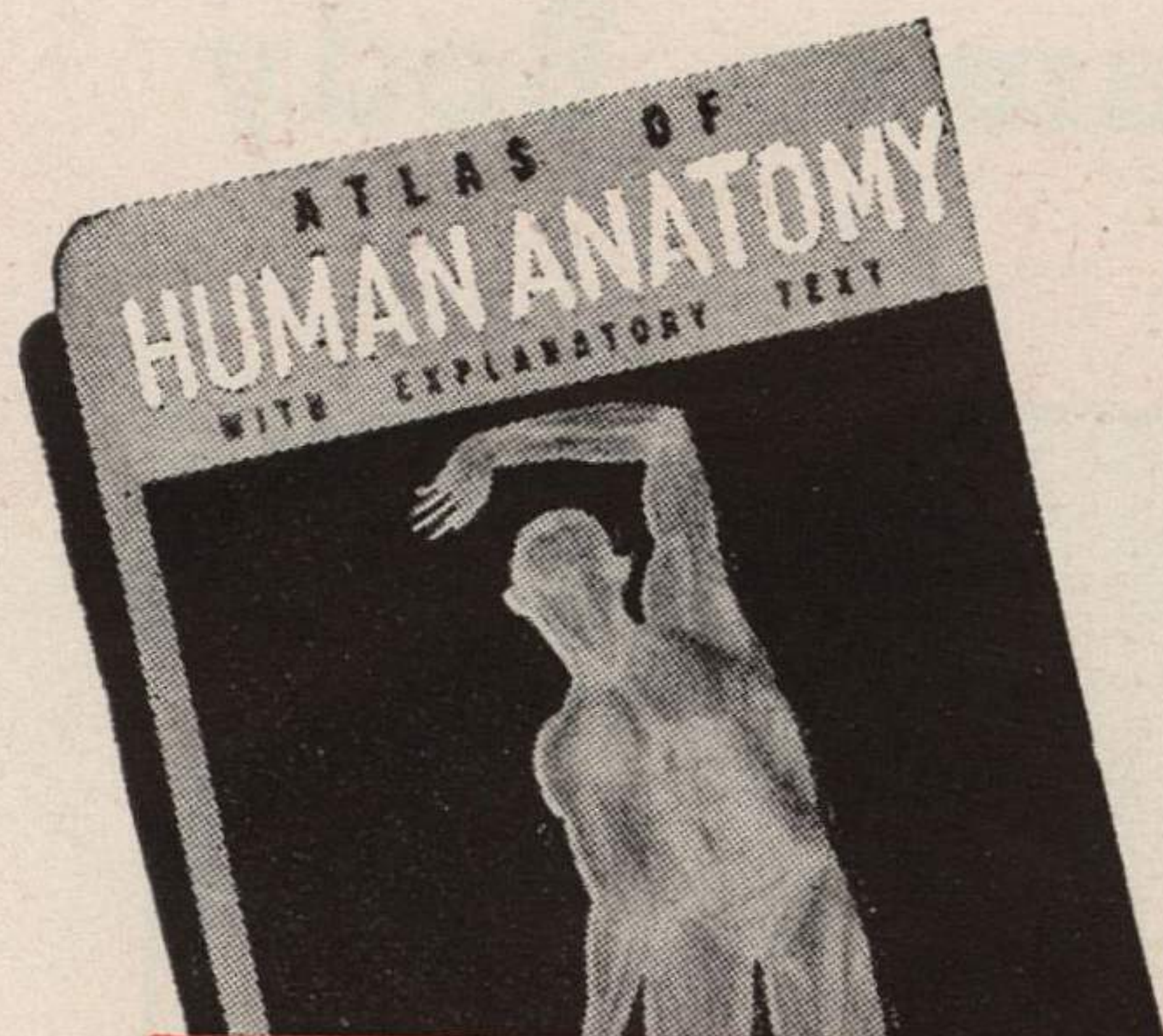
Dear Sirs:

Will you kindly send on approval one copy  
of the pocket-size book forj "Atlas of Human Anatomy"  
for examination purposes?

Sincerely yours,

James H. Raport,  
Instructor in Physical Education.





"The unusual part of this compact little volume is not that it should contain such excellent color-work, nor that such eminent scholarship should be encompassed within its pages; but that so genuinely useful and informative a book should be produced at so modest a price."  
—MODERN MEDICINE



## OUTSTANDING FEATURES!

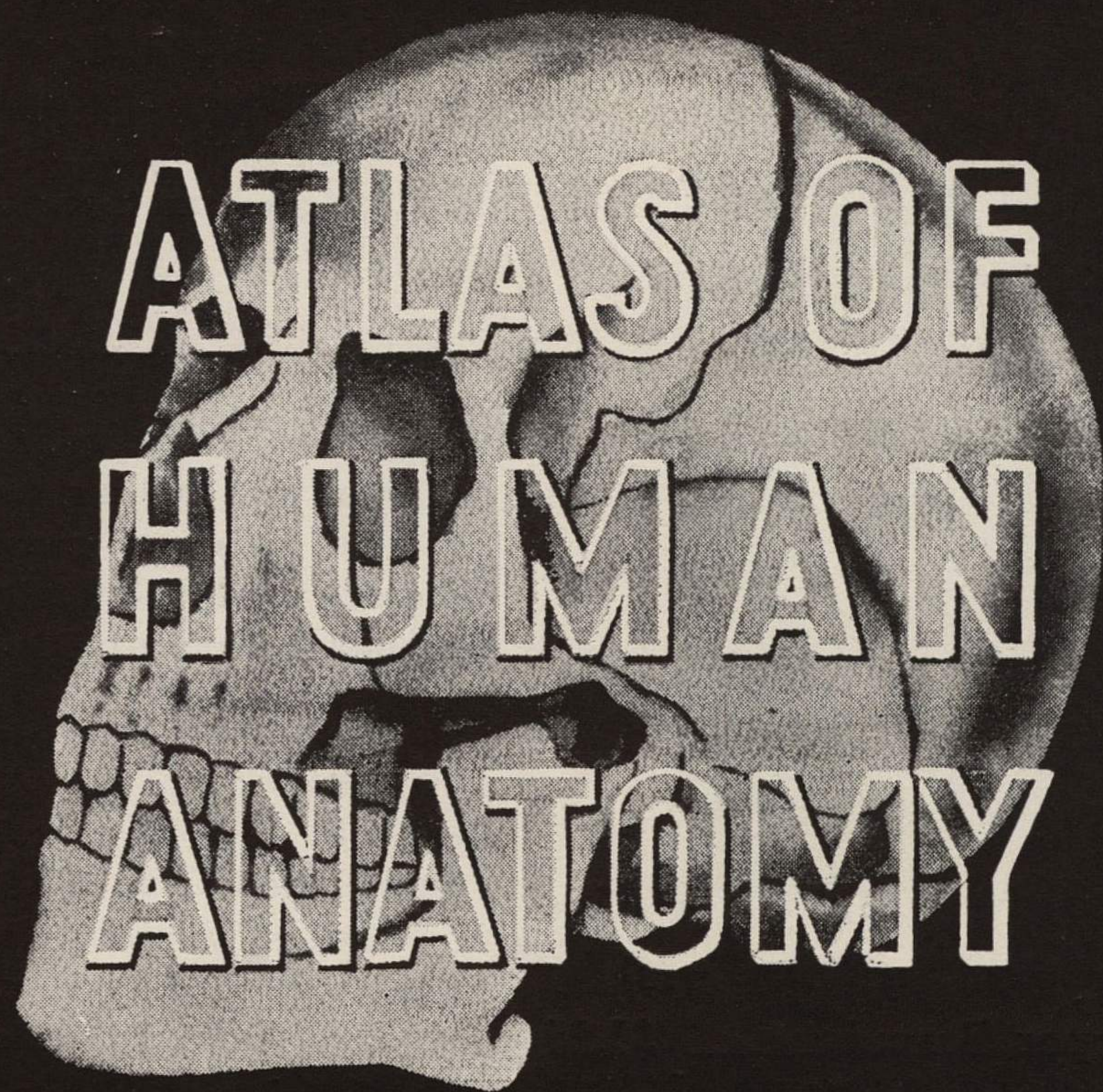
- Lithographed in 8 colors with greatest accuracy.
- 39 detailed color-true charts and 9 line drawings.
- 4 new charts. The base of the brain; the base of the skull; circulation system of the head; the entire alimentary tract, including the salivary glands.
- Latin and English nomenclatures on the same pages as the charts.
- A handy pocket-size — 64 pp., 8½ x 5½ inches.
- Charts by Franz Frohse of University of Berlin; Max Brödel and Leon Schlossberg of Johns Hopkins University.
- Explanatory text and editing by Jesse F. Williams of Columbia University.
- Printed on strong heavy paper.
- The lowest price of any work comparable to this Atlas: \$1.25 PAPER BOUND; \$2.00 CLOTH BOUND.

**CLAY-ADAMS CO.**

Headquarters for

Dustite Steel Display Cabinets, Models, Charts,  
Specimens, Skeletons, Phantoms, Manikins, Dolls, Etc.  
25 EAST 26th STREET NEW YORK, N. Y.

# The Famous **FROHSE-BRÖDEL** **ANATOMY CHARTS** *in pocket-size book form.*



containing the **FROHSE-BRÖDEL** anatomy charts



# 39 Absolutely Accurate and Vivid Illustrations of the Structure and Organs of the Human Body

Lithographed in **EIGHT COLORS**

The Complete Set of  
**\$81.00** Frohse-  
 Brödel  
 Wall Charts now  
 available in this  
 pocket-size Atlas  
 for **\$2.00**  
 only

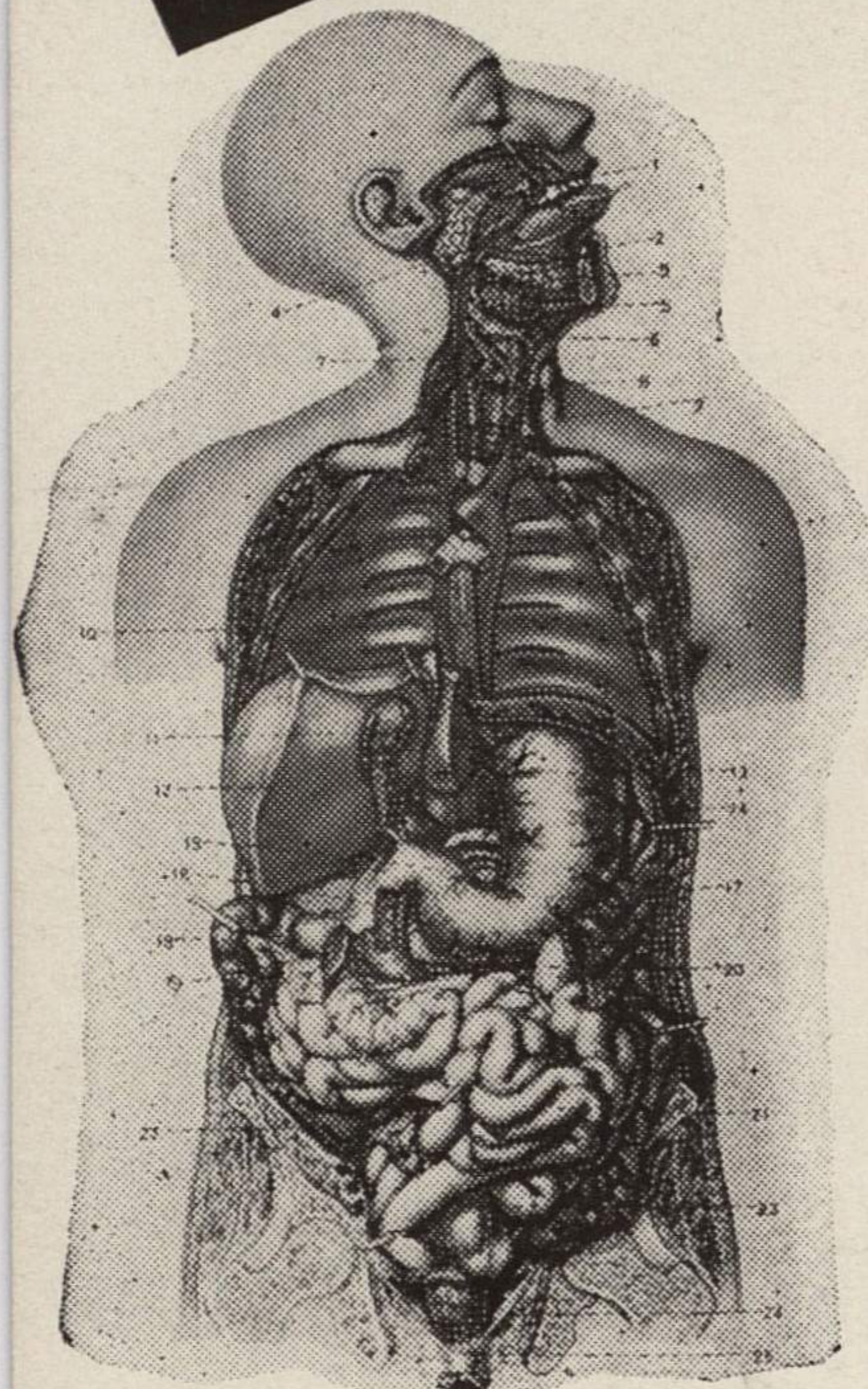
*Includes all 35 Frohse-Brödel charts (reduced) used in lectures at medical schools*

In their original wall chart size, these famous and widely used anatomical illustrations sell for \$81.00. Now the "Atlas of Human Anatomy" brings you the very same illustrations plus four others, lithographed in 8 colors, for the amazingly low price of \$2.

*Invaluable for reference*

The "Atlas of Human Anatomy" lays bare the entire structure and organs of the human body. It gives you 39 vivid views of man's internal composition with an accuracy and richness of detail possessed only by the expensive, Frohse-Brödel charts.

This Atlas is an invaluable reference work in pocket-size form for doctors, nurses, students and instructors. As a guide in following lectures, and as a supplement to "Kimber and Gray" or "Williams," it is ideal. The Atlas is bound in durable cloth and printed on strong, heavy paper—64 pages of unusually fascinating material for almost anybody interested in the human body.



Alimentary Tract (Reduced 1/3)

**Paper Bound** ..... \$1.25

**Cloth Bound** ..... \$2.00

## MAJOR CHARTS

- \* New charts never before published
- Skeleton (ventral, dorsal)
- Musculature (ventral, dorsal)
- Nerve System
- \* Base of Brain
- \* Base of Skull
- Circulation System
- \* Circulation System of Head
- Viscera, Chest and Abdomen (four layers)
- \* Alimentary Tract (complete)
- Urogenital Organs (male, female)
- Uterus with Early Pregnancy
- ... and many others

## BESIDES THE 39 CHARTS—

Dr. Jesse F. Williams of Columbia has written a 27-page introduction summarizing: The Cellular Basis of Man, The Skeletal, Muscular, Circulatory, Nervous, Digestive, Eliminative and Urogenital Systems, and the Endocrine Glands.

# ATLAS OF HUMAN ANATOMY



February 28, 1940.

Mr. Jack Copeland,  
Sports Editor,  
The Wichita Beacon,  
Wichita, Kansas.

Dear Jack:

Your very good letter of the 25th instant has been received and much appreciated. As you know, everything in the way of reserved seat tickets has been sold out for nearly month. I have nothing to do with the tickets, but I personally went to Mr. Earl Falkenstien, financial secretary of the Athletic Association, and asked him to do the best he could for you.

Doubtless Mr. Falkenstien has written you, but I wanted you to know that I appreciated your nice letter and I trust there is some way you can see the game if you get up this way. Our press table is terribly limited even for the local correspondents.

With all good wishes, I am

Very sincerely yours,

Director of Physical Education and Recreation,  
Varsity Basketball Coach.

FCA:AH



February 27  
1 9 4 0

Mr. Jack Copeland  
Sports Editor  
Wichita Beacon  
Wichita, Kansas

Dear Mr. Copeland:

Dr. Allen has referred your letter of February 25th to this office in regard to the tickets for the Kansas-Missouri basketball game Friday evening.

We have been out of reserved seat tickets since February 15th and have had to turn away several hundred requests already. We have had general admission tickets in the top balcony, but this location does not offer a very good view of the playing court, and we do not recommend it if you really want to see the game.

Our press space is also limited and those tickets have already been issued to those sports writers who cover our games regularly. It seems that there just isn't anything that we can do about it except offer you standing space or some of the general admission tickets, and I am quite sure that you would not want to make the trip here to watch the game from either location.

In the event that you do, we will be glad to do the very best we can, and wish that you would advise us whether or not you are coming because I am sure there will be absolutely nothing available by Friday evening, - not even standing room.

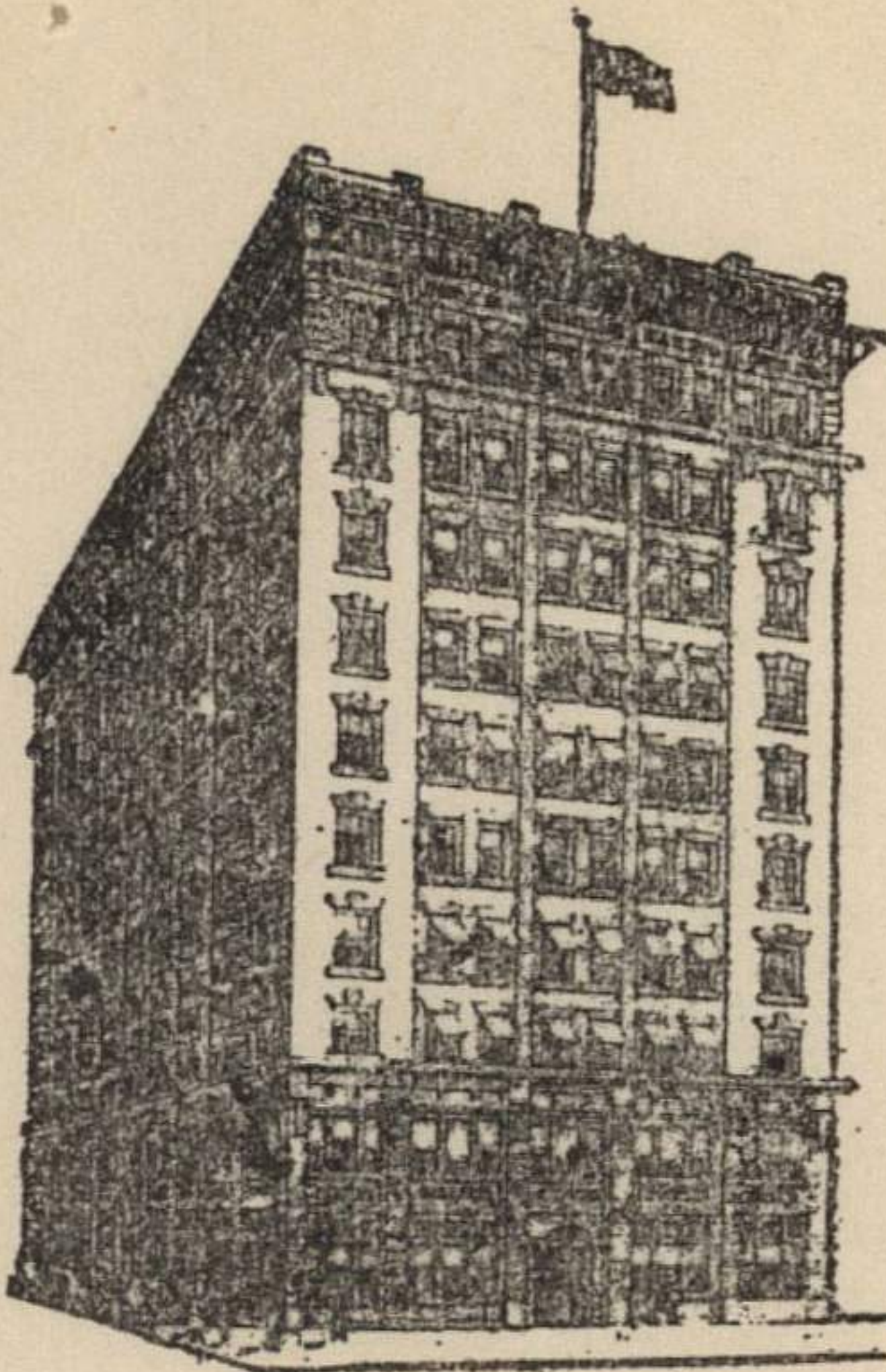
Regretting that we cannot take care of you in a good location, I am

Very sincerely yours,

E. L. Falkenstien, Sec'y  
U. of Kans. Phys. Edu. Corp.

ELF: IW





HOME OF THE WICHITA BEACON

# The Wichita Beacon

EVENING AND SUNDAY MORNING  
M. M. LEVAND, PRESIDENT

WICHITA, KANSAS

Feb. 25, 1940

Dr. F.C. Allen  
Kansas University  
Lawrence, Kas.

Dear Phog:

Sorry I didn't get to at least say hello down at Stillwater the other night when your club played Oklahoma Aggies. But making connections between that town and any other is extremely tough so I had to leave immediately after the contest.

Frankly, that was a tough one to lose. I thot yours was the better club, altho the Aggies did show plenty in those first five minutes. HOWEVER, my book showed fourteen set shots for Kansas in the first half and it has always been my observation that good basketball clubs don't permit such things to take place.

Both clubs looked a little tight, altho the maneuvering of K.U. was much better than that of the Aggies. It was the first time I had seen Bob play and I know now that all the things they have been saying about him weren't falsehoods. That kid has it. In his quarterback role he's something of a combination of Chuck Hyatt and old Harold Hewitt. Am happy to hear he has no desire to play independent or A.A.U. ball. I've seen that end of the sport make tramps out of too many worthwhile youngsters.

Would you be so kind as to have the public relations bunch put aside a couple of press tickets for me to the Missouri game? I realize this is asking a lot in view of the fact that you're probably already sold out, but I'd like one seat at the press table and one other reserved.

Kindly drop me a line on the matter.

Wishing you loads of success in your fight for the Big Six crown, I remain,

Your friend  
*Jack Copeland*  
Jack Copeland  
Sports Editor



February 28, 1940.

Mr. W. F. Coen, Jr.,  
1420 Insurance Exchange Bldg.,  
Kansas City, Missouri.

Dear Junior:

You are certainly a fine, loyal supporter,  
and we appreciate very much your kind words. We are  
going to give them a tough battle Friday night.

Give our love to the new daughter. We want  
to see both of you real soon.

With all good wishes, I am

Very cordially yours,

FCA:AH

Director of Physical Education and Recreation,  
Varsity Basketball Coach.



W. F. COEN

1420 INSURANCE EXCHANGE BUILDING  
KANSAS CITY, MO.

February 27, 1940

Doctor Forrest C. Allen  
Department of Physical Education  
Lawrence, Kansas

Dear Doc:

Congratulations on a swell job. I know it isn't over but win, lose, or draw you and the boys have put on a great performance. After all the only time it's really fun winning is when the chips are down.

Give those Tigers a fit - I don't like anything about them.

Regards,

*Jimmie*

*A new daughter wishes you luck, too.*

*c b u r n  
2 - - - - -*



February 28, 1940.

Mr. Marvin H. Creager,  
The Milwaukee Journal,  
Milwaukee, Wisconsin.

Dear Marvin:

Thank you so much for sending me the tear sheet from your Milwaukee Journal. I took your letter and the sheet home and the Allen family had much pleasure in recalling your early days here on the campus and your connections with the Kansas City Journal and your fine success with the Milwaukee Journal.

It was nice of you to write as you did, and we appreciate your taking time out from your busy existence to remember us. Everything is fine and dandy, thank you, Marvin, and we hope the same is for you.

With best wishes for your continued success, I am

Fraternally,

Director of Physical Education and Recreation,  
Varsity Basketball Coach.

FCA:AH



**THE MILWAUKEE JOURNAL**

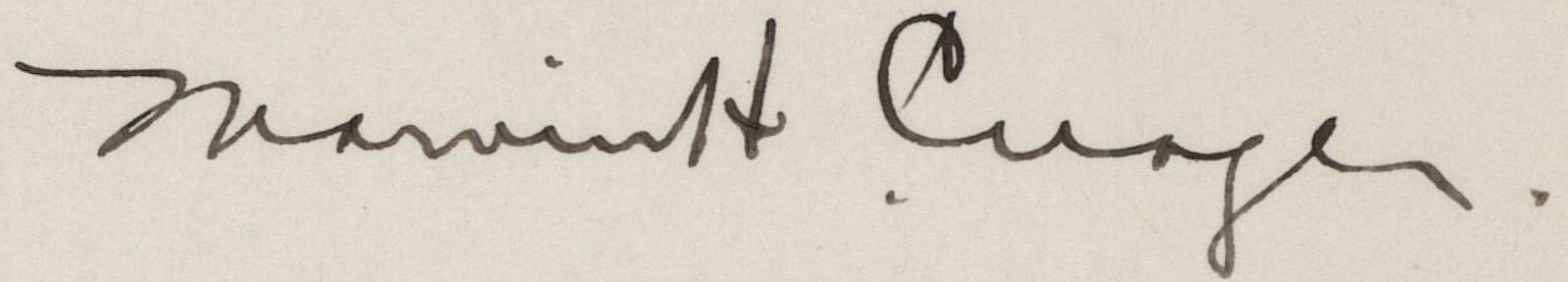
February 26, 1940

Dear Phog:

You may be interested in this tear sheet from our paper, having to do with young Bob who seems to be coming along in true Allen fashion. My congratulations both to him and to his dad.

Hope everything is fine with you.

Sincerely yours,

A handwritten signature in cursive script, reading "Marvin H. Creager". The signature is written in dark ink and is positioned to the right of the typed name "MHCreager: AK".

MHCreager: AK  
Enc.

Dr. F. C. Allen  
Athletic Director  
University of Kansas  
Lawrence, Kansas



February 23, 1940.

Mr. Parke Carroll,  
Sports Editor,  
Kansas City Journal,  
Kansas City, Mo.

Dear Parke:

I just talked to Earl Falkenstien, our financial secretary, and he tells me that all of the seats have been gone for nearly three weeks. I am sure, however, that Earl will be happy to fix you up with standing room some way. I showed your letter to him and I know that he will care for you some way. So if it is necessary to revise this letter, won't you drop him a line telling him just exactly how many you definitely want? I doubt if the individuals wanting the two to be paid for will want them if there is nothing but standing room. I know that Earl will take care of your passes but they will all be standing room because there are absolutely no seats left.

The basketball play-off will begin to get hot from March first on. Frankly, I believe that we are going to have a great turn out for both the sectional eliminations and the national championship. The races are getting hot all the way around, and in the next week will begin to foment a lot of discussion.

I agree with you that when the interest is on the upgrade is the time to capitalize. So from March first on we will put on the pressure and the publicity.

Parke, it will be necessary for our committee to pass on the officials and as soon as we determine the eligible schools for the Big Six and the Missouri Valley elimination play-off arrangements will then be made for this first game. I am very sure Iba will want you and it looks as if George Edwards is going to win, and of course he will want you. But for the sectional elimination and the finals - those officials will be selected later.

I want you to know that we very much appreciate the fine cooperation that you are giving our H.C.A.A. build-up.

Very cordially yours,

Director of Physical Education and Recreation,  
Varsity Basketball Coach.

FCA:AH



# KANSAS CITY JOURNAL

DAILY AND SUNDAY

KANSAS CITY, MISSOURI

February 22

ORVILLE S. MCPHERSON  
PRESIDENT & PUBLISHER

RUSSELL H. MILES  
VICE PRESIDENT & GEN. MANAGER

J. C. JOHNSEN  
VICE PRESIDENT & EDITOR

Dr. F.C. Allen  
University of Kansas  
Lawrence, Kas.

Dear Dr. Allen:

Thanks for yours of recent date regarding a meeting of basketball officials during the National Coaches Convention here in March. I plan a discussion with Ted O'Sullivan during our trip to Lincoln Saturday.

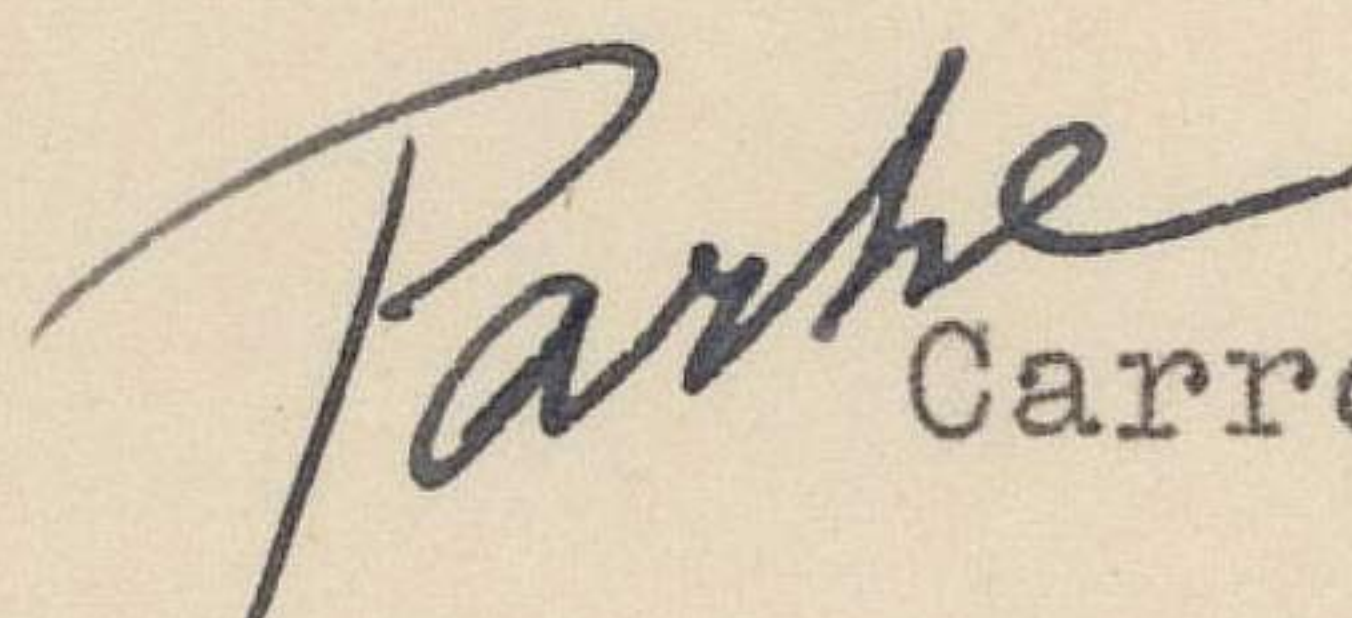
We will write officials in all sections, inviting their suggestions and their attendance at a meeting here March 29 or 30.

Incidentally, I must make a choice between going South with the baseball club or remaining in Kansas City. I have worked so many games for N.C.A.A. teams this winter that I intend to remain here this winter if they will want my services in the sectional elimination and national championship. Otherwise, I am afraid the publisher will ask me to "cover" the Blues. Will action along that line be taken soon? The club starts training early in March.

It might be a good idea to get the ball rolling on the N.C.A.A. competition about the first of the month and if I can be of any assistance please feel free to call upon me.

With kindest regards,

Sincerely,

  
Carroll

PS- Would it be possible to get three passes and two tickets to be paid for to the Kansas-Missouri game?



February 14, 1940.

Mr. G. T. Chubb,  
Westport High School,  
Kansas City, Mo.

Dear Friend Chubb:

I just received your letter of the 11th instant this morning, and regret to advise you that we have been sold out for the Missouri game for over a week. It wouldn't be possible to procure five seats with the exception of seats in the gallery. They are so high up and so poorly placed that at least half of the court is obscured from view at that point.

I went in to speak to Mr. Earl Falkenstien, the financial secretary of the Athletic Association, and he tells me that if you will write him he will make arrangements to squeeze you in for standing room somewhere, but it will not be possible to take care of anyone else.

We could sell at least 6,000 tickets for the Missouri game, and we have only about 3,500 good ones. The University students long ago snapped those up for season tickets. We have too small a place to play, and I am sorry. You tell Burrett Tomlinson and Bob Sheridan that I am very sorry. I wish you might have arranged to have had the boys down for some of the other games so that we could have accommodated them.

Our alumni are raising Cain over the ticket situation - they all want to go - but the "sold out" sign is already out.

Remember, now, Chubb, if you negotiations to come be sure to let Mr. Falkenstien know ahead of time because he will have to make arrangements to slip you in at some niche that he has failed to find at the present time.

With all good wishes, I am

Sincerely yours,

Director of Physical Education and Recreation,  
Varsity Basketball Coach.

FCA:AH



Kansas City, Mo.  
Feb. 11, 1940

Dr. J. C. Allen  
Basketball Coach  
Univ. of Kansas  
Lawrence, Ks.

Dear Dr. Allen:-

Four of my senior members of the Westport High School basketball team have asked me to inquire about tickets to the Kansas-Missouri basketball game. If you can see your way to let them in I'll bring them down to Lawrence.

I believe two of these boys are real good college material. Burrett Tomlinson <sup>6'1"</sup> and Bob Sheridan. Sheridan is the best of the two. He stands 6'3" and can do a good job in passing, running and is a very good shot. His grades are very high and he wants to go to K. U. next year. Will you talk to Bud Kennedy about him?

Can you find room for four boys and myself to the M. U. - M. U. game?

Very truly yours  
- G. J. Chubb  
Westport High School



February 18, 1940.

Mr. Paul W. Cress,  
Cress, Tebbe & Cress,  
Perry, Oklahoma.

Dear Paul:

Your very fine letter of the 17th was received this morning, and I appreciate it very much. 7

It was a pleasure to meet with you at Lions, and all the other fine gentlemen in Perry. Our boys remember with great pleasure their visit with you and we are hoping we will have another one, atleast within a year. It was good to see you again. 06

With kindest personal regards, I am

Very sincerely yours,

Director of Physical Education and Recreation,  
Varsity Basketball Coach.

FCA:AH



LAW OFFICES OF  
CRESS, TEBBE & CRESS  
PERRY, OKLAHOMA

P. W. CRESS      G. S. TEBBE      PAUL W. CRESS

February 17, 1940

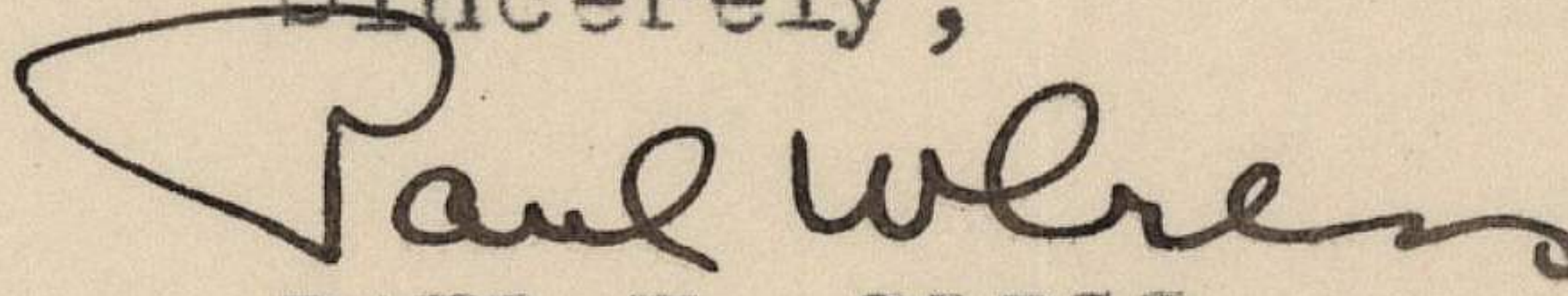
Dr. Forrest Allen  
University of Kansas  
Athletic Association  
Lawrence, Kansas

Dear Dr. Allen:

The writer wants to thank you again for the pleasant afternoon spent in your company and for the fine talk delivered at the Lions Club.

I was very proud of the boys at the basketball game and while we lost they were certainly all gentlemen. Their spirit was fine and they were all in there fighting all the time. I think Kansas has another typical 'Phogg' Allen team.

I also appreciate the other courtesies shown by you to me. With kindest personal regards, I am

Sincerely,  
  
PAUL W. CRESS

PC:R