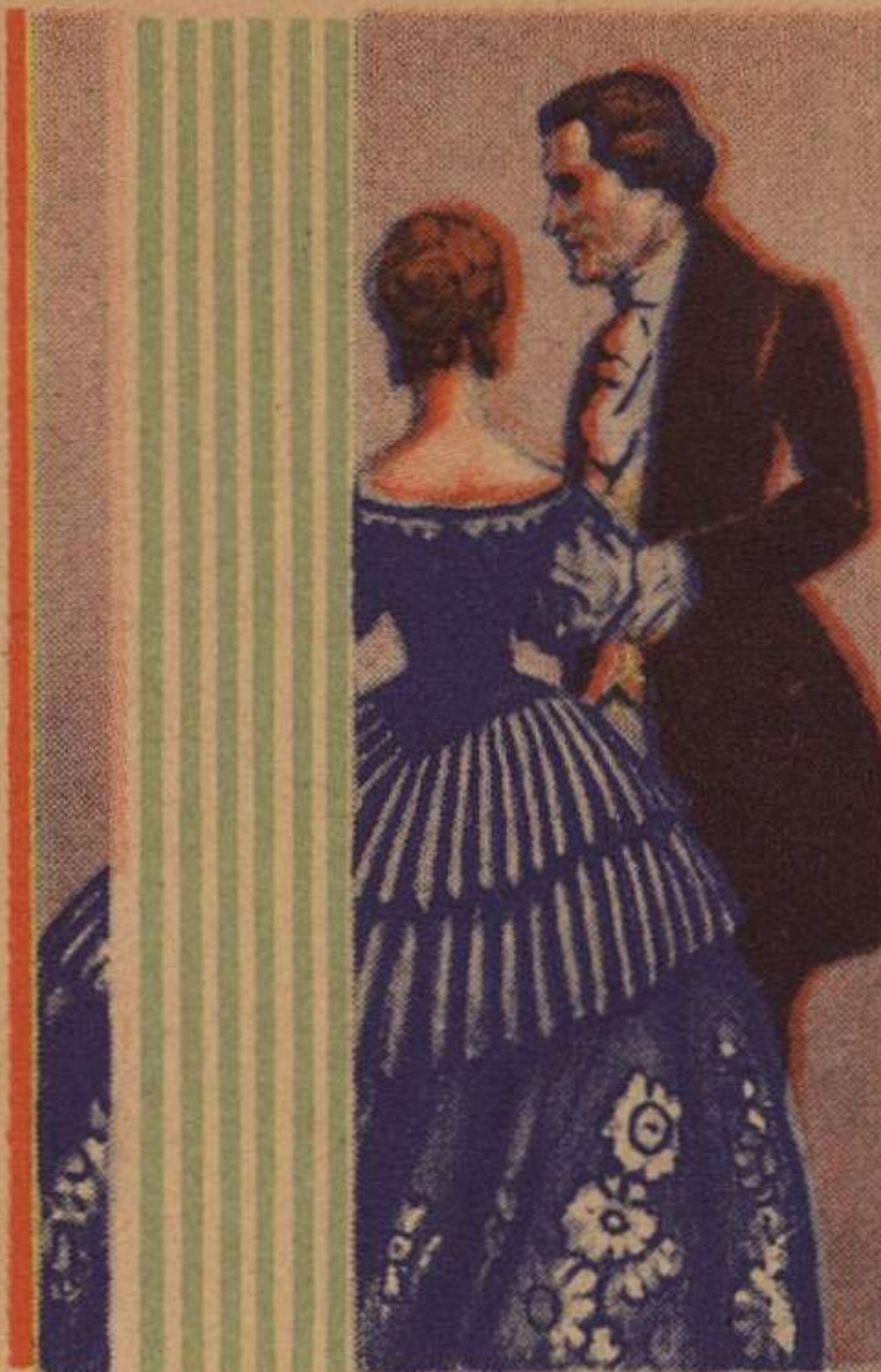




Social Message

BY WESTERN UNION



COPYRIGHT 1937 BY WESTERN UNION TEL. CO.

KAT78 11 SC=YA KANSASCITY KANS 3

DR PHOG ALLEN=

KANSAS STATE AGRICULTURAL COLLEGE GYM

WISH I WERE THERE WITH YOU TONIGHT. KANSASCITY IS

BEHIND YOU=

J G EVANS MD.