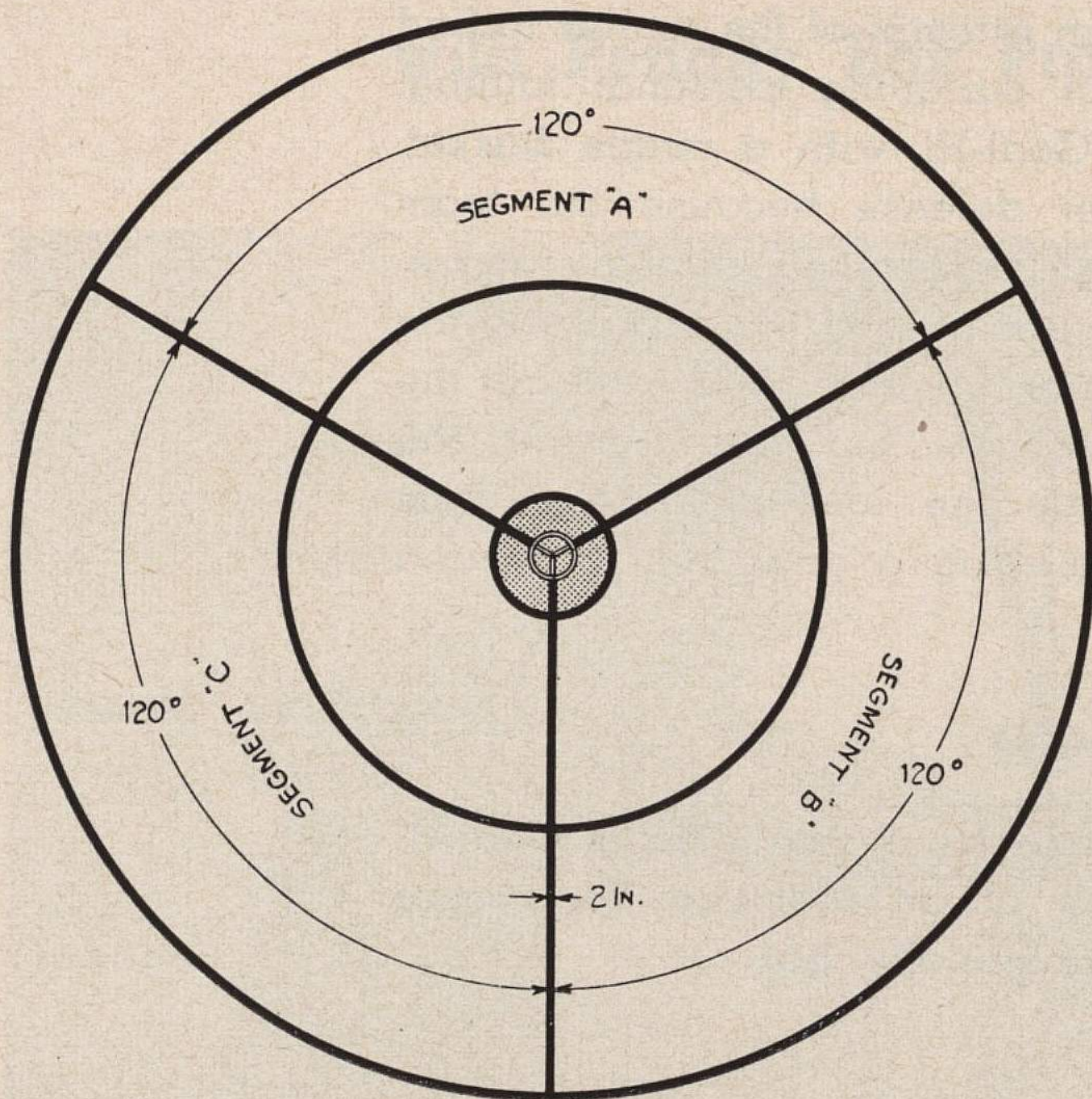
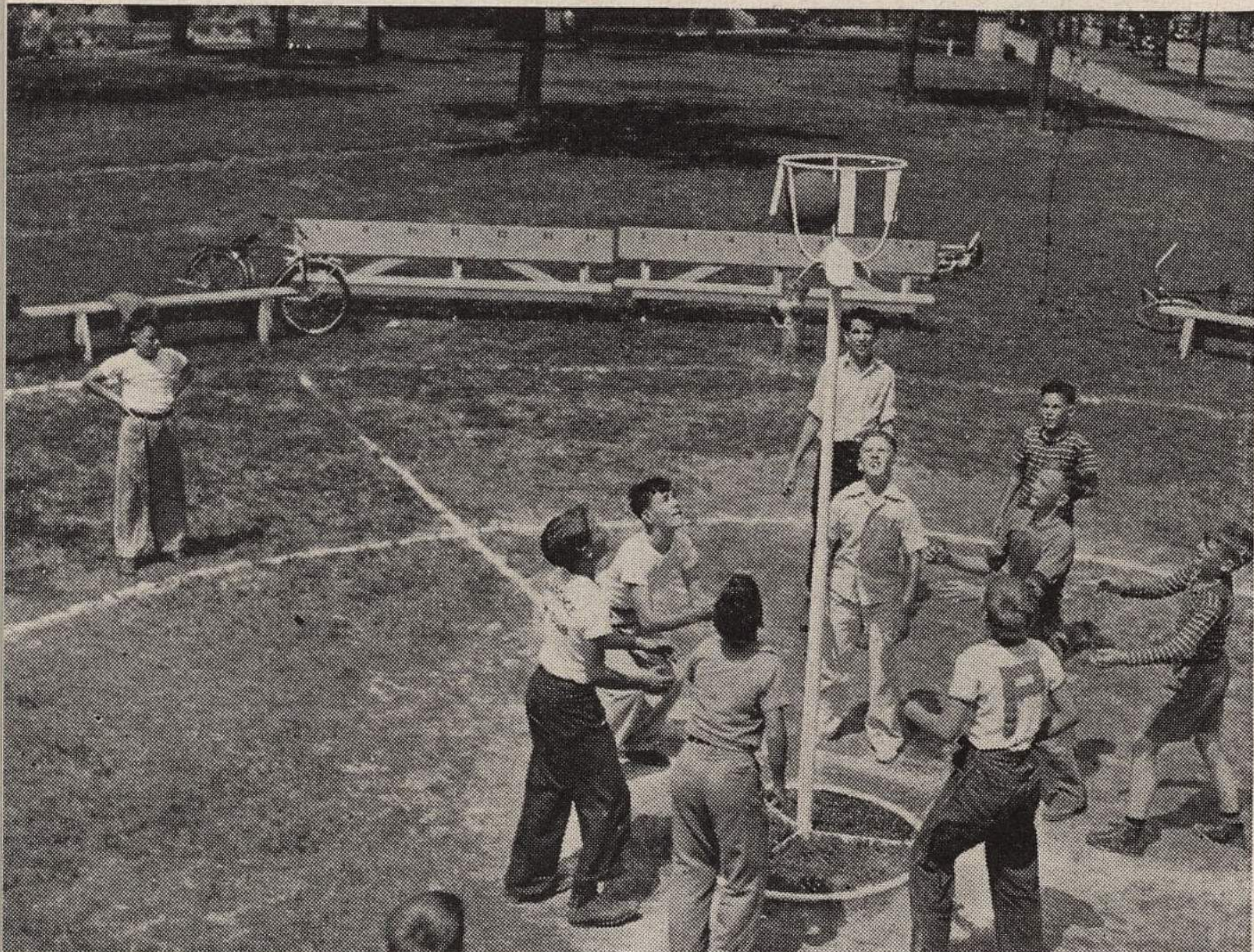


# GOAL-HI

## THREE SEGMENT GAME for Physically Handicapped Children



The Goal-Hi three segment playing field is the same as the one used to play the official game, except that three dividing lines, as illustrated, are added to divide the field into three segments (A, B and C).



Bodily contact is practically eliminated when the three segment game is played. Thus, Tom, Dick and Harry—who may be somewhat below normal, physically — can safely play Goal-Hi and benefit by the exercise.