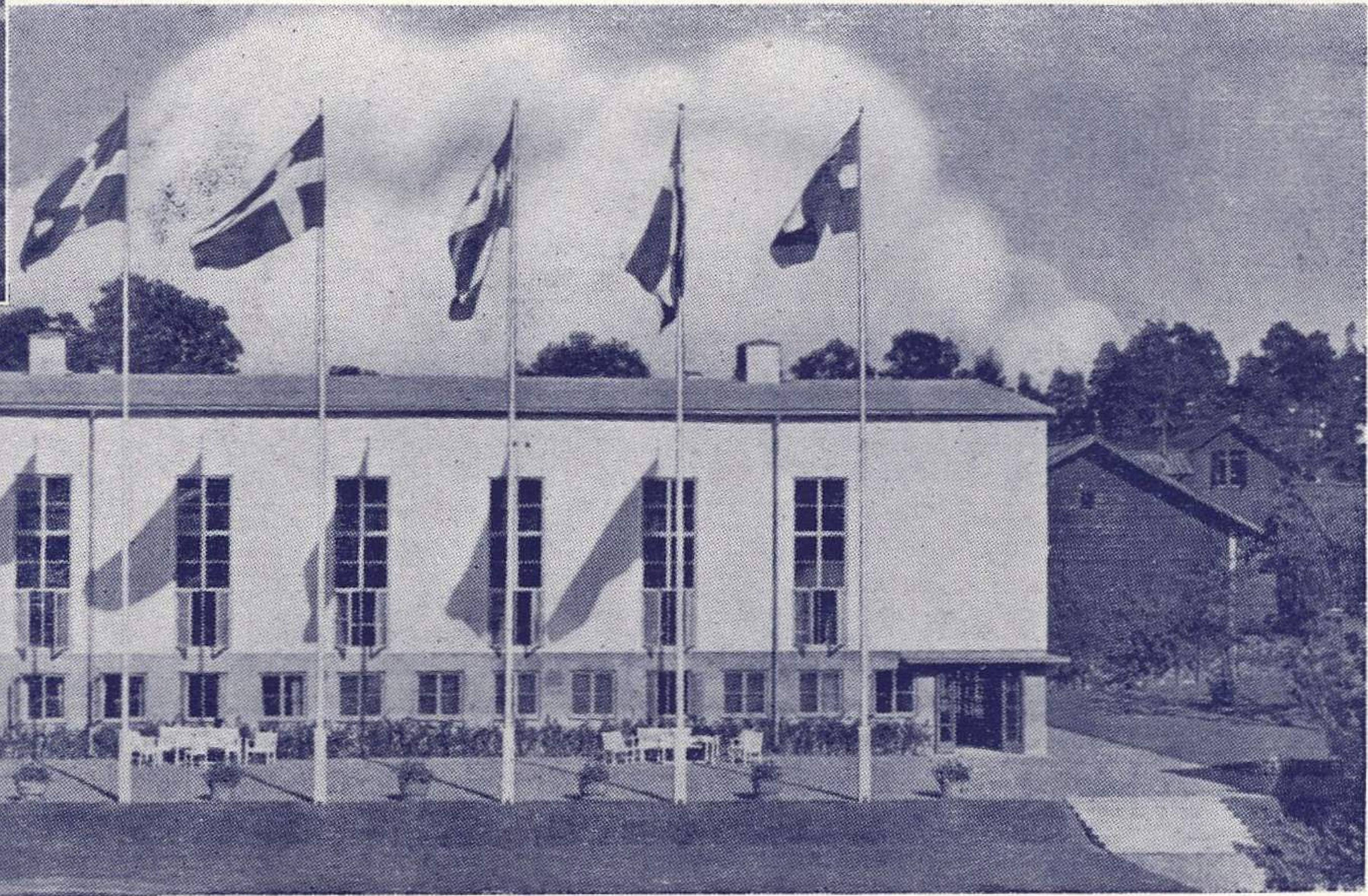




Ling's birthplace at Södra Ljunga, in the county of Småland, which will be moved to its original site and restored for the centenary celebration



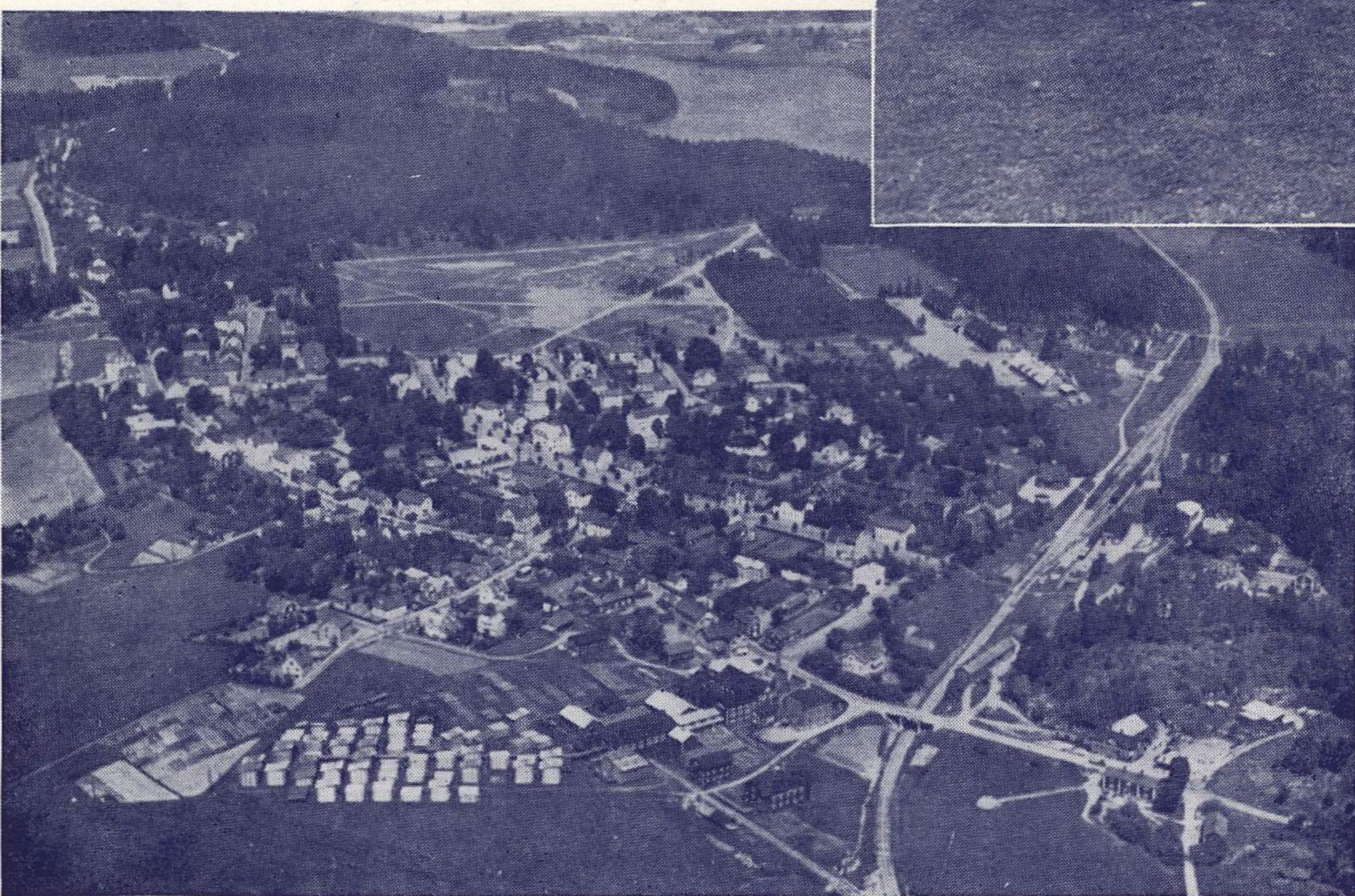
The People's Gymnastic High School at Lillsved belonging to the Swedish Gymnastic Federation, the new educational centre of voluntary gymnastics, inaugurated in 1937



The Royal Gymnastic Central Institute, founded by Ling in 1813



At the Berlin Olympiad 1936 a demonstration was given by 1,200 Swedish gymnasts (600 male and 600 female) before 100 000 spectators who filled the Stadium. The exhibition evoked much interest and attention



The camp of the Lingiad will be situated at Malma Hed, Malmköping, in beautiful environs. The distance from Stockholm is 100 kilometres in a southwesterly direction