

HOW TO REACH THE CAMP

This summer Coaching School and Officials' Clinic will be held at the Des Moines "Y" Camp, located seven (7) miles north of Boone, Iowa, on the Des Moines River. You may reach the camp in the following manner: leave U. S. Highway No. 30 at Story Street in Boone, Iowa, and go north on Story Street through Boone to 22nd Street, turn left and follow the signs to the camp.

The camp can also be reached by the Fort Dodge, Des Moines & Southern Railroad. The railroad provides regular passenger service with stops at the very door of the camp.

SUPPLIES WHICH YOU WILL NEED TO BRING FOR CAMP PERIOD

It will be necessary for you to bring your own bedding. This should consist of at least three (3) pairs of double blankets, sheets or flannel blankets, a pillow. Athletic paraphernalia for swimming, tennis, baseball, etc. The nights are cool in the valley of the Des Moines. Be prepared.

PUBLICATION OF ENROLLMENT

The Iowa High School Athletic Association will publish in its October 1941 Association Bulletin the names and addresses of all coaches and officials who enroll at the school.

PROGRAM

MONDAY, AUGUST 18, 1941

7:15 A. M. to 8:45 A. M.

CHASE LODGE

Registration and assignment to quarters.

8:45 A. M. to 9:00 A. M.

General assembly. An explanation of the method of procedure and a clarification of the general plan of procedure will be made at this time.

FIRST SESSION

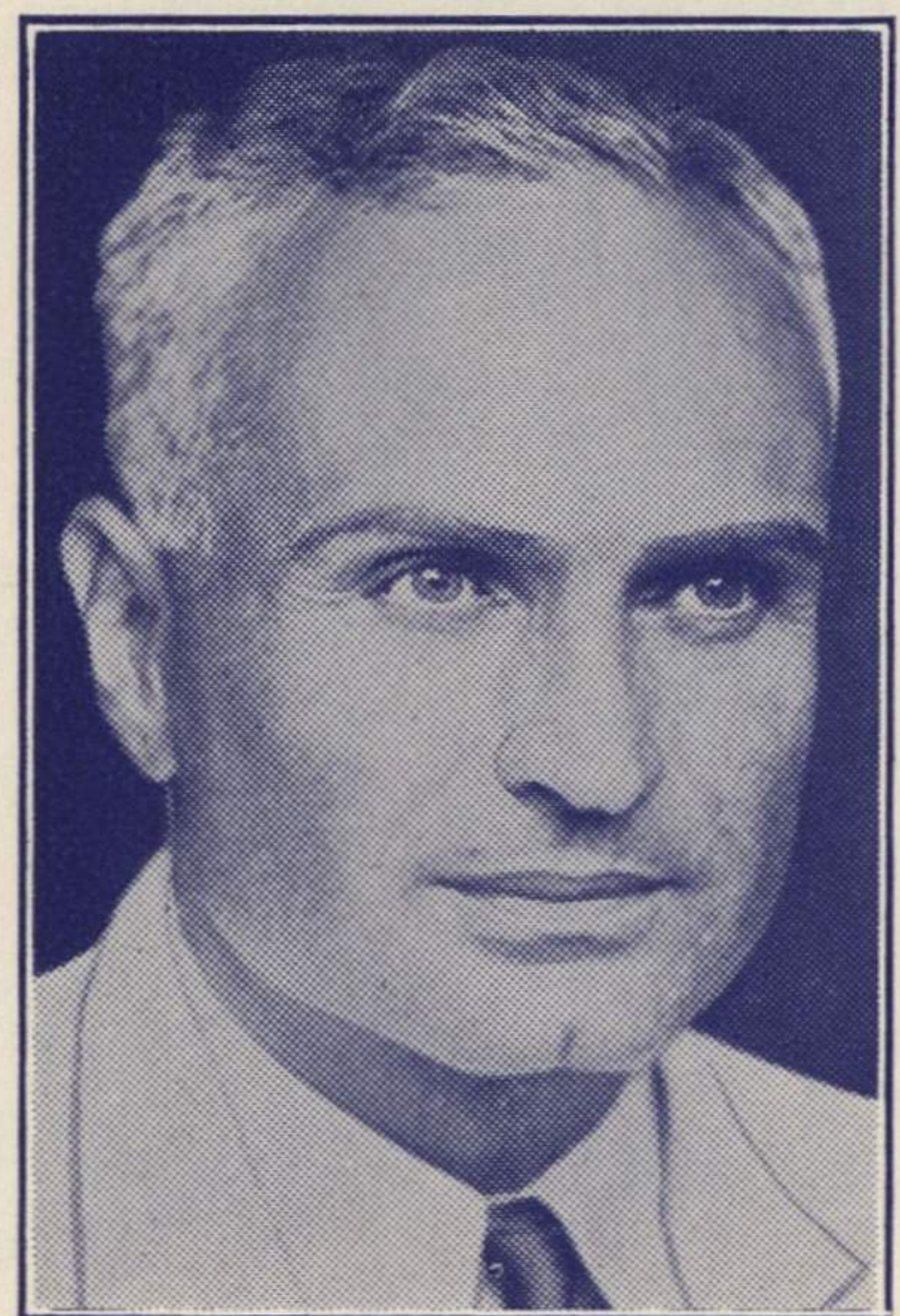
9:00 A. M. to 10:15 A. M.

"Football Fundamentals" by Bernie Bierman, Head Football Coach, University of Minnesota, Minneapolis, Minn.

10:15 A. M. to 10:45 A. M.

"Ankle Sprains, Treatment and Strapping for Specific Types," by Beryl Taylor, Trainer, Iowa State College, Ames, Iowa.

Demonstrations and individual instruction in the technique of strapping different types of athletic injuries will be given by Beryl Taylor in the Nature Lodge continually.



Bernie Bierman