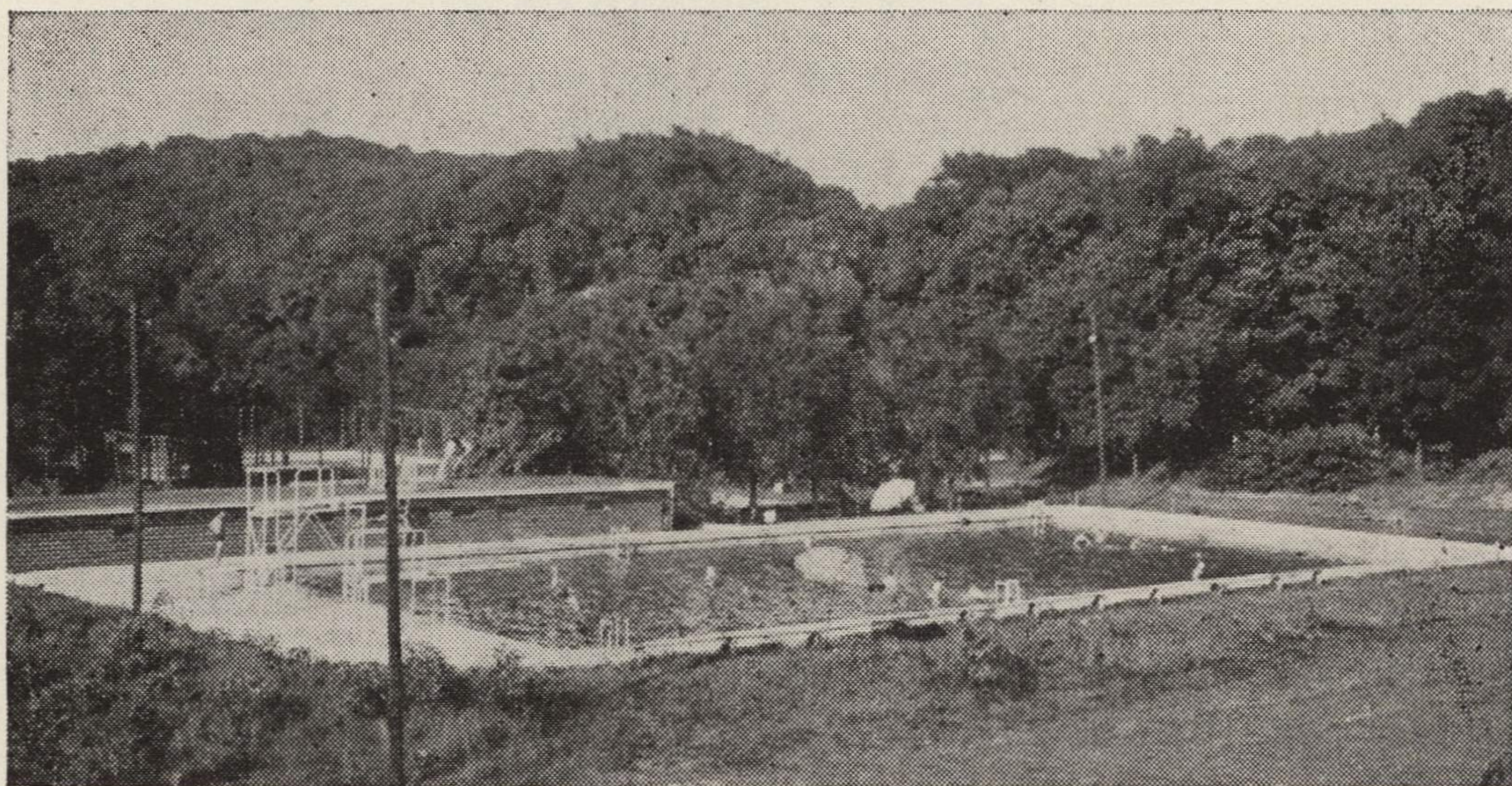


## HOW TO REACH THE CAMP

This summer Coaching School and Officials' Clinic will be held at the Des Moines "Y" Camp, located seven (7) miles north of Boone, Iowa, on the Des Moines River. You may reach the camp in the following manner: leave U. S. Highway No. 30 at Story Street in Boone, Iowa, and go north on Story Street through Boone to Twenty-second Street, turn left and follow the signs to the camp.

The camp can also be reached by the Fort Dodge, Des Moines & Southern Railway. The railroad provides regular passenger service with stops at the very door of the camp every three hours during the day.

The camp will be occupied by another group until 1:00 p.m., August fifteenth. Please do not, therefore, arrive in camp until after lunch, August fifteenth. The first meal will be available at the camp Tuesday evening.



*Camp Swimming Pool with Tennis Courts in the Background*

## SUPPLIES WHICH YOU WILL NEED TO BRING FOR THE CAMP PERIOD

It will be necessary for you to bring your own bedding. This should consist of at least three (3) pairs of double blankets, sheets or flannel blankets, a pillow. Bring your own athletic paraphernalia for swimming, tennis, baseball, etc. The nights are cool in the valley of the Des Moines. Be prepared—bring plenty of blankets!

## 1944-1945 COACHING PROBLEM

Many superintendents and principals who have not actively coached high school teams for several years will be called upon to take over this very important task during the 1944-1945 school year. Opportunity is here given for these men who have been out of coaching for a few years to polish their coaching technique and to modernize their coaching philosophy.