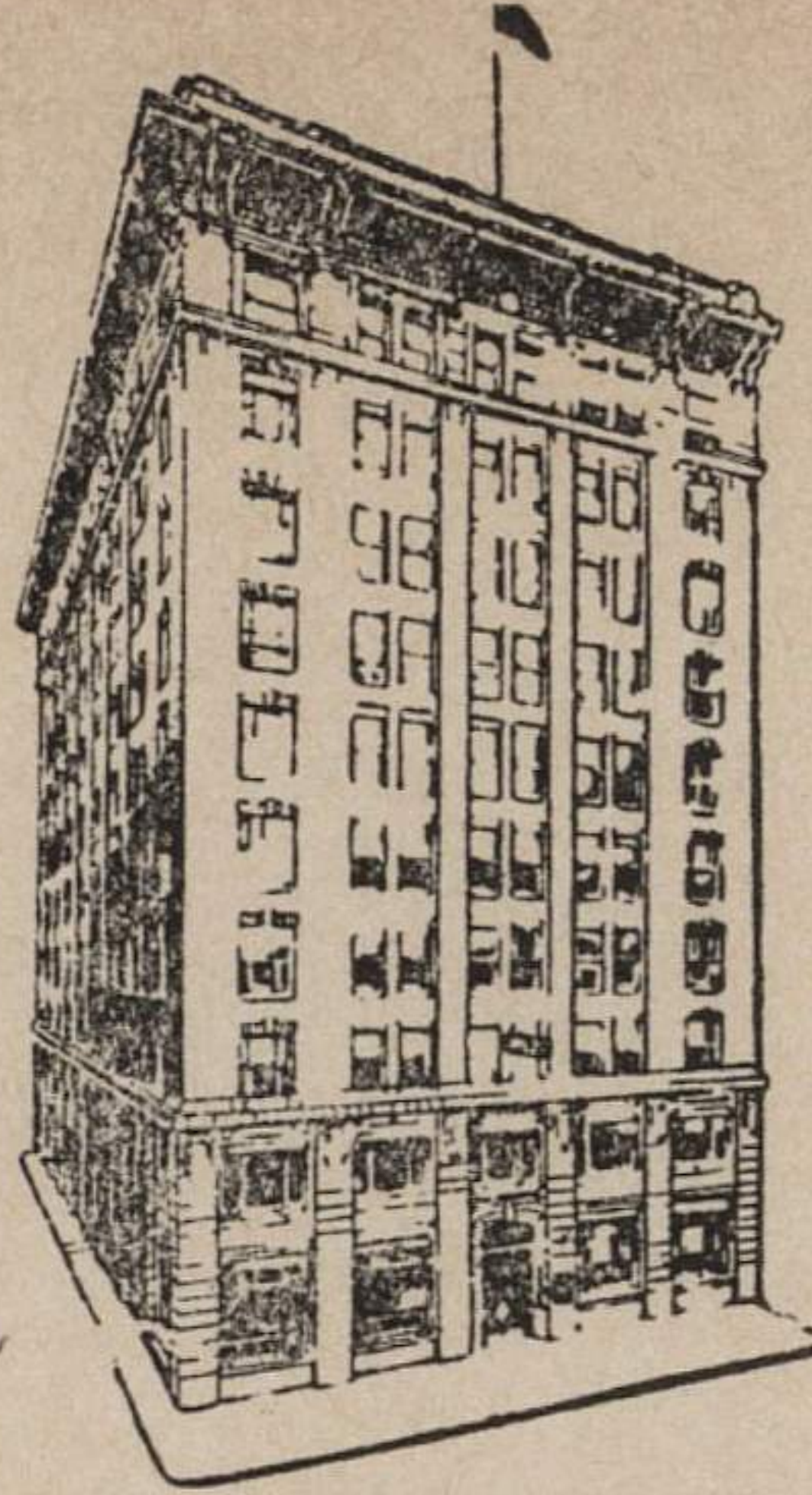


LARGEST DAILY AND SUNDAY CIRCULATION
IN THE STATE OF KANSAS.



HOME OF THE WICHITA BEACON

ASSOCIATED PRESS
UNITED PRESS
INTERNATIONAL NEWS SERVICE

The Wichita Beacon

EVENING AND SUNDAY MORNING
M. M. LEVAND, PRESIDENT

WICHITA 1, KANSAS

May 1, 1946


Mr. Forreest C. Allen
Director of Physical Education
Varsity Basketball Coach
University of Kansas
Lawrence, Kansas

My dear Phog:

Please send me Glenn Cunningham's
address. We want him to pinch-hit for Jack Copeland.

Love to your family and your good
self.

Sincerely yours,


M. M. Levand, President
THE BEACON PUBLISHING COMPANY

MML/fs