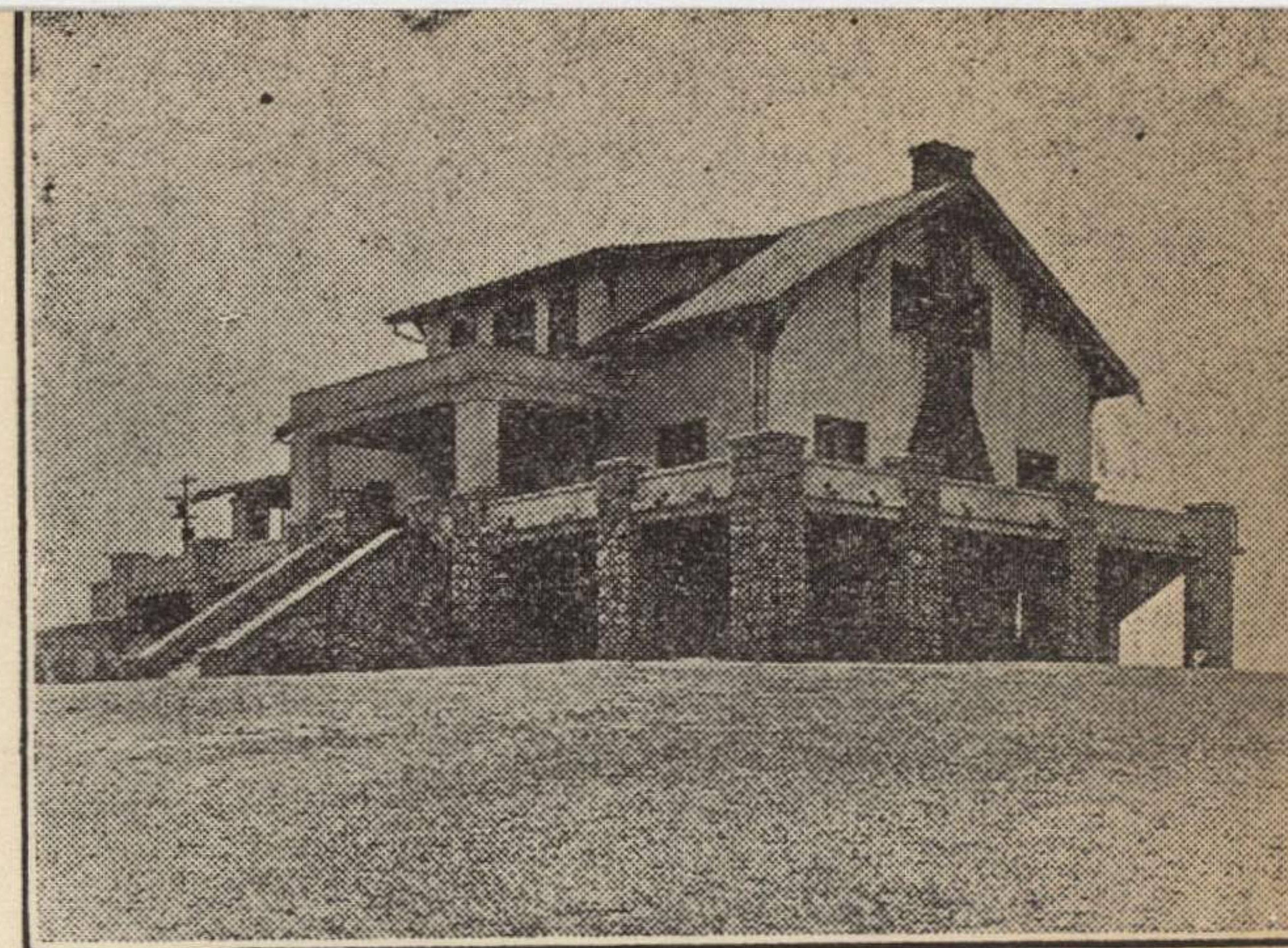


Lawrence Country Club

LAWRENCE, KANSAS



F.C. Allen
801 La. St.
Lawrence, Kansas

Dear Mr. Allen:

For the past two or three years it was evident that a new heating plant would have to be installed at the club. Our present and previous managers faithfully stayed on the job through some very severe cold spells without heat in their living quarters on the third floor of the club house, which was very unfair to them.

That fact, together with the fact that the old heating plant had become antiquated to such an extent that it had become a source of considerable expense each year, caused the Board to contract for a new plant which would be adequate for all needs - present and future. This plant has been installed and is now working to the complete satisfaction of every one vitally concerned. It heats the entire building including the locker rooms. No more showers in the "Pneumonia Wards".

The total expense of this plant - an oil burning, forced circulation layout - was approximately \$1500.00. This amount included necessary remodeling and repairs caused by the change in the location of the plant. The heating plant itself cost \$1275.00. The Board did not wish to increase the club debt any more than was necessary, so reluctantly decided to ask the club members for individual donations. The response to date has been gratifying, approximately one-fourth the membership having donated or agreed to donate approximately one-third the cost.

To you as a contributor, the Board expresses its appreciation in aiding a worthy and much needed improvement.

Sincerely,

The Board of Directors.

By Gene Glahn, President,
W. H. Reuse, House Chairman.