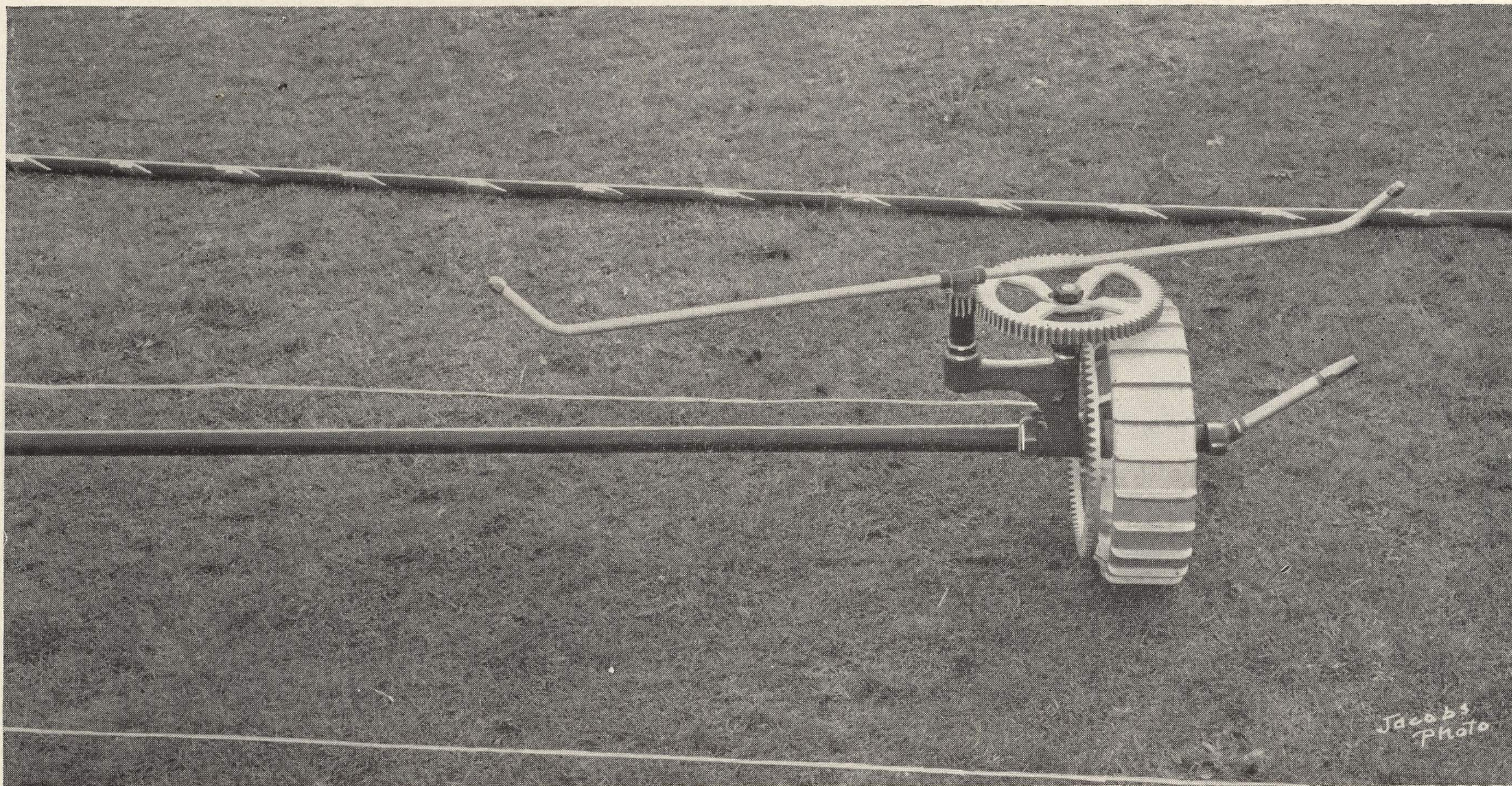


CUT A



THE ECONOMY
TRAVELING
HEAD.—
Heavier
construction
throughout.
Built for
hard work,
longer life, and
greater water
capacity.

NIGHT WATERING.

This has many advantages when "Economy" Traveling Sprinklers with Traveling Bases are used, because

1st.—A field can be properly watered at night, and played on next morning.

2nd.—A tremendous saving of Water, Time and Labor. Think of it!

A.—No water evaporation from sun, wind and heat.

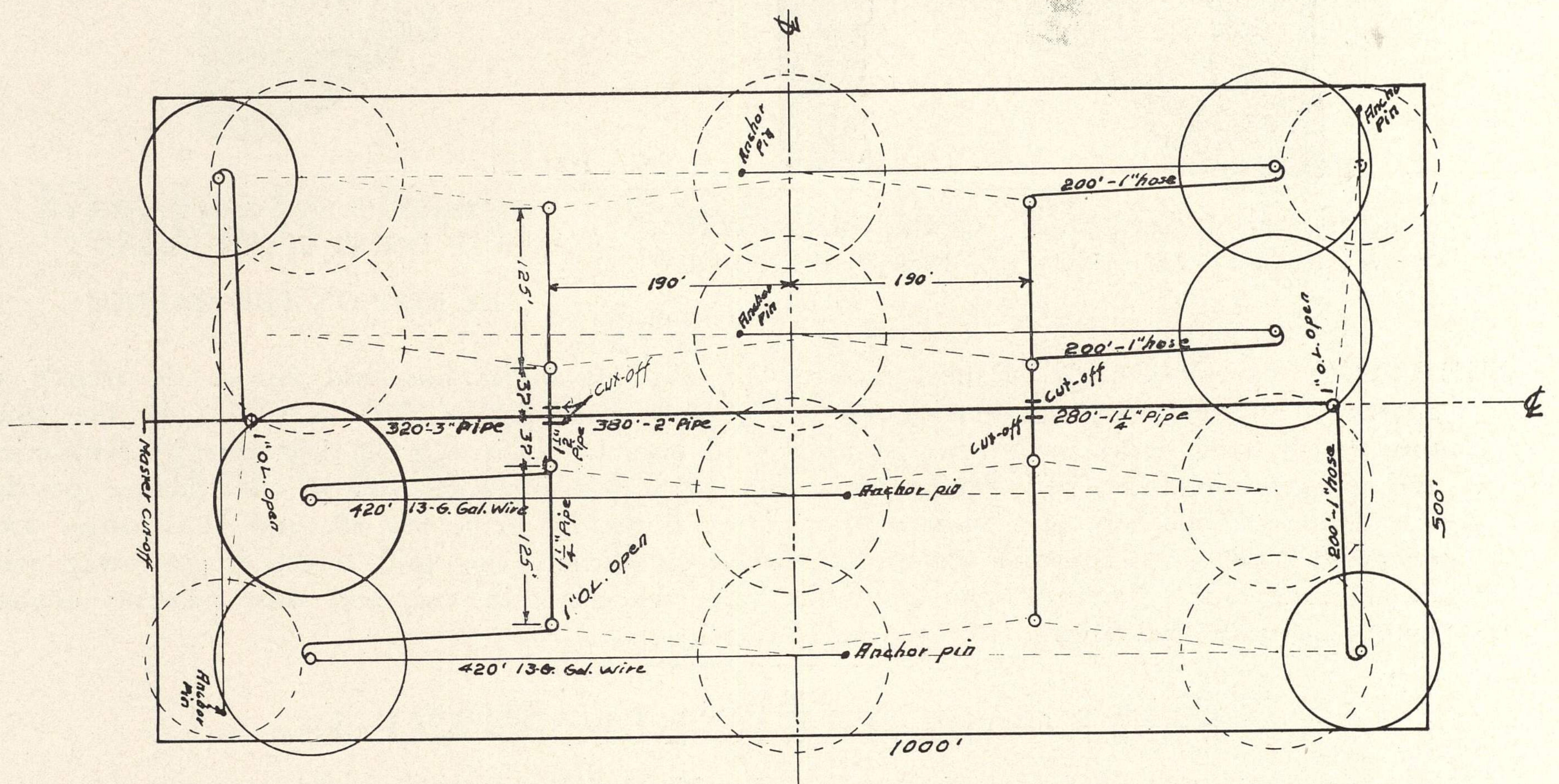
B.—No practice time lost because of day watering.

C.—Elimination of manual labor. No changing sprinklers at night.

3rd.—Firmer turf, due to slow penetration, resulting from even water distribution, and the elimination of water run-off to low spots. Watering in the cooler temperature of the night prevents burning of the grass.

IMMEDIATE ECONOMIES.

Installation and equipment costs are considerably less: operating costs are cut, and less water and labor required than with other types of equipment and methods of watering.



A practical and efficient layout for a full sized Polo Field, to be watered with Economy Traveling Base Units, showing location of outlets.

Further details and information regarding a new safe field connection, with automatic water shut-off, gladly given on request.