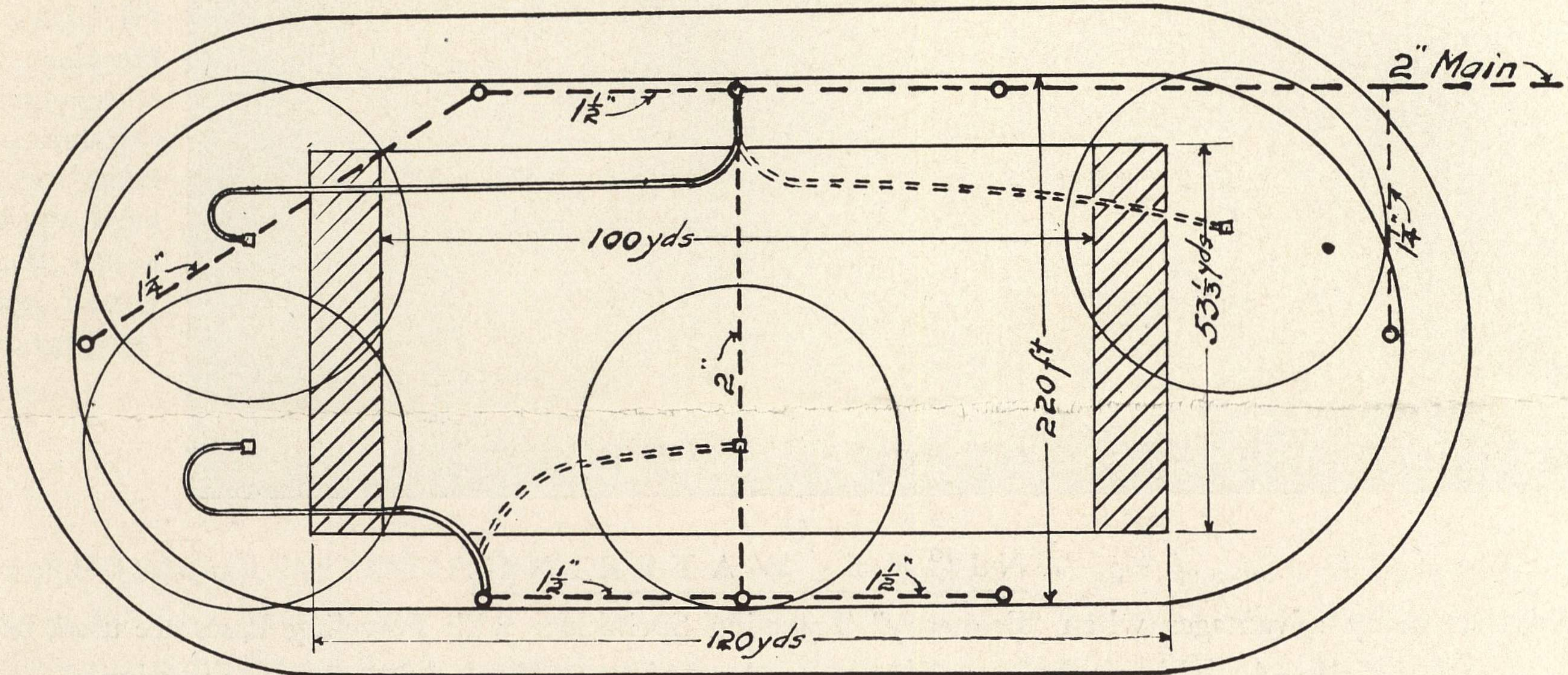


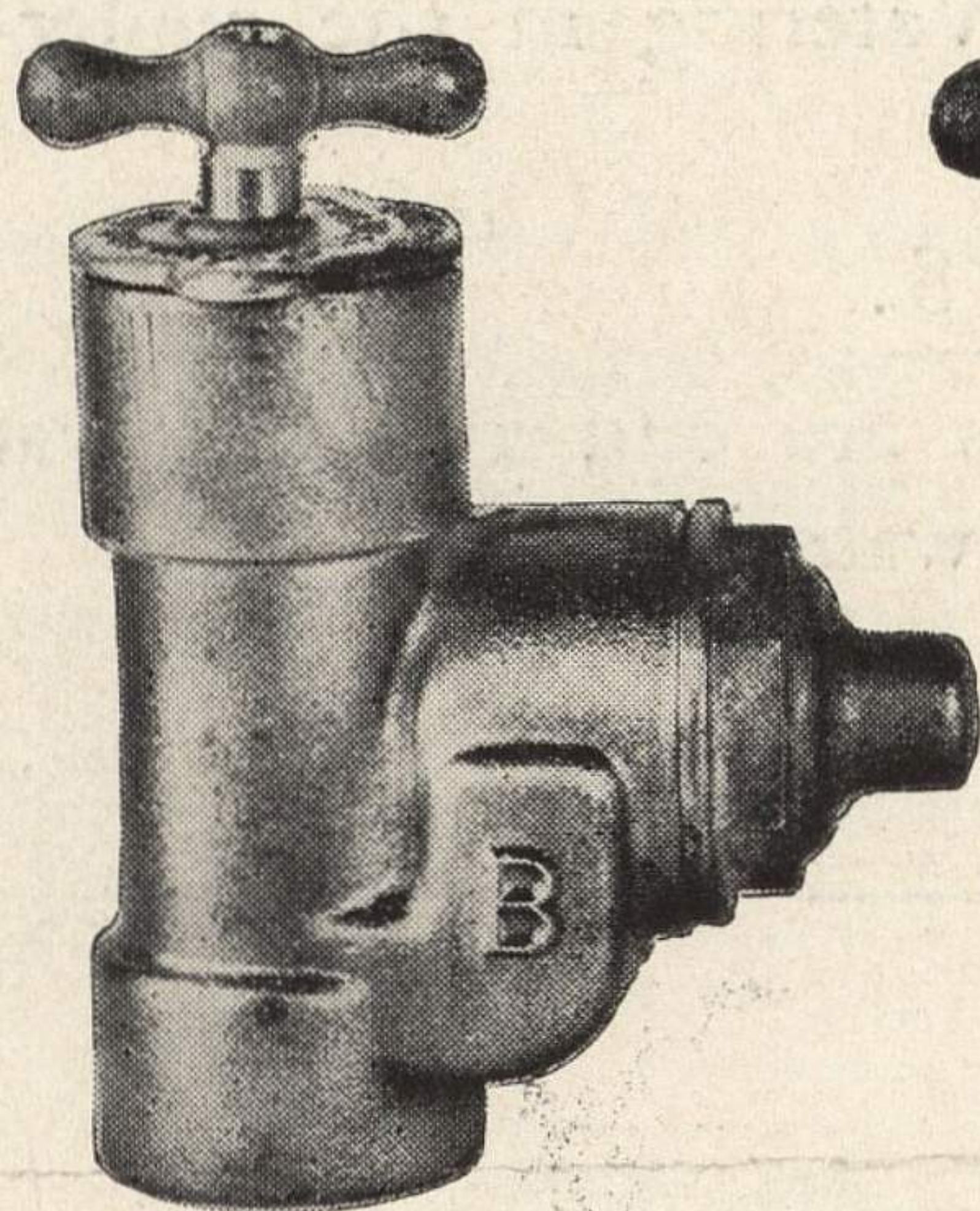
ATHLETIC FIELD TO BE WATERED WITH TWO ECONOMY TRAVELING SPRINKLERS WITH TRAVELING BASES

THIS SIDE SHOWS HOOK UP WITH 200 FT., 1 INCH HOSE. REQUIRING NO CHANGE—SPRINKLER TRAVELING ENTIRE LENGTH OF FIELD WITH THE AID OF ECONOMY SNAP VALVE—SHUTS OFF WATER WHEN END OF FIELD IS REACHED—AUTOMATIC AND FOOL PROOF.

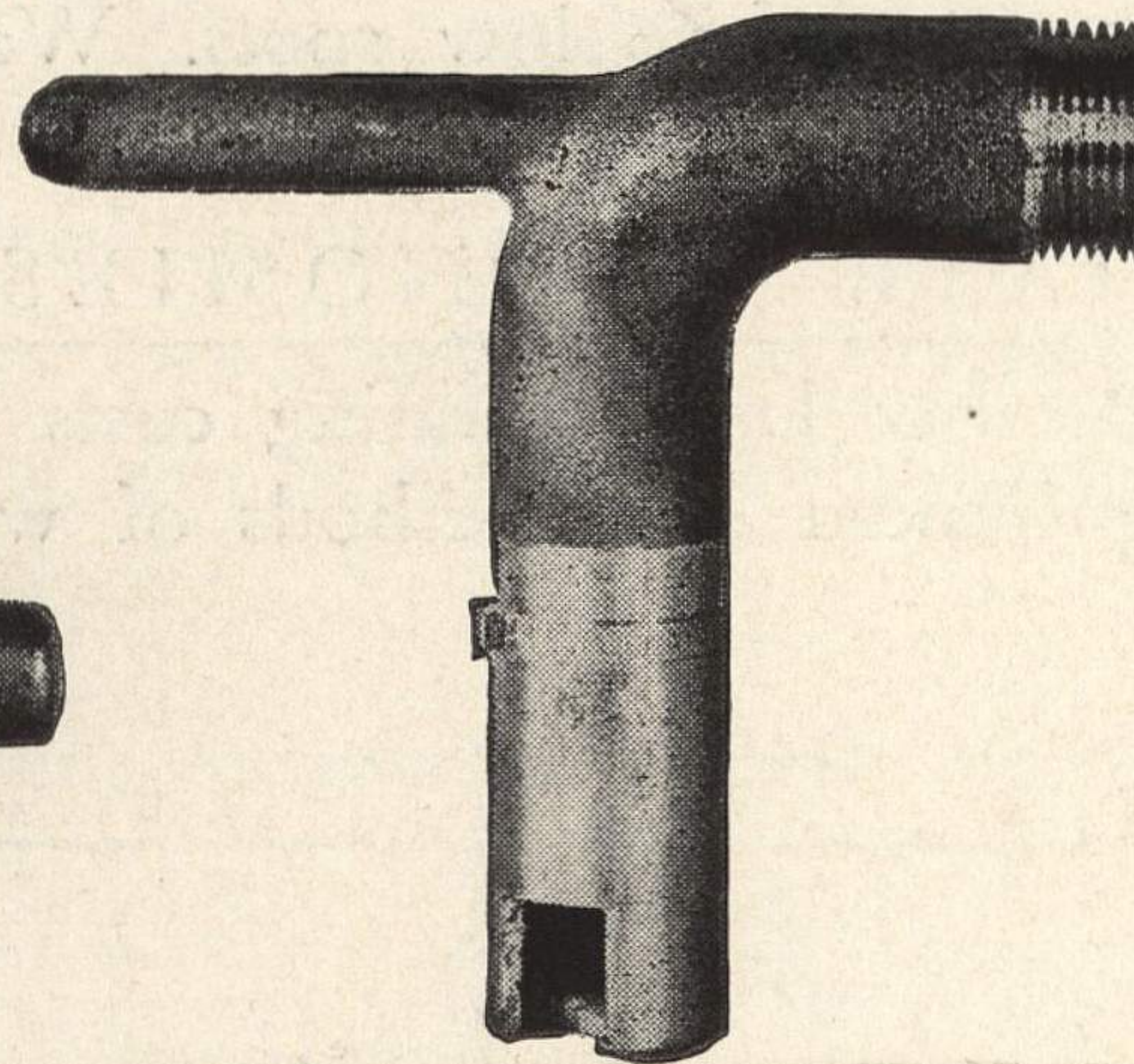


Scale - 1" = 100ft

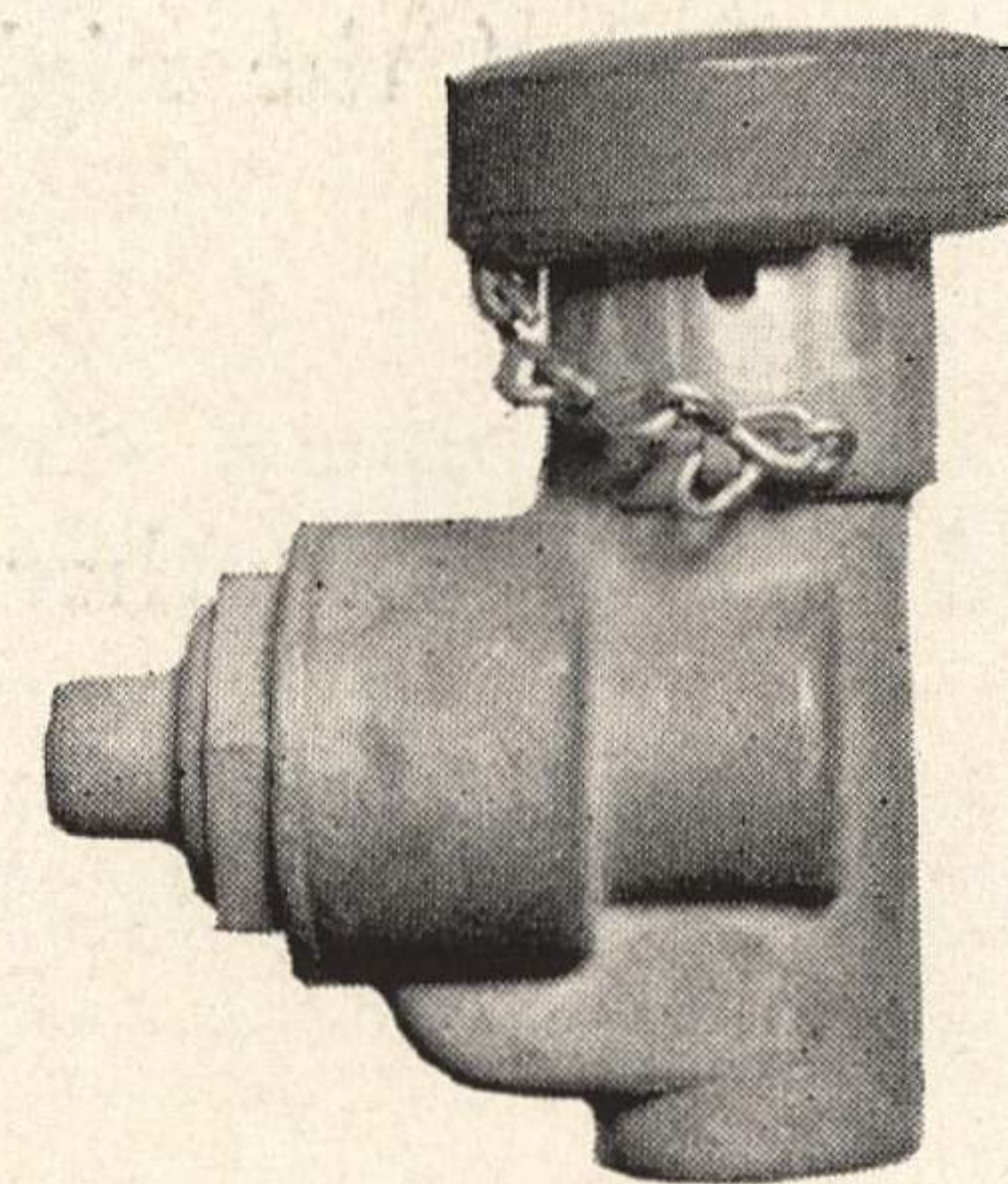
THIS SIDE SHOWS OPERATION USING APPROXIMATELY 100 FT., 1 INCH HOSE WITH ONE CHANGE TO WATER LENGTH OF FIELD NO CHANGE OF CABLE WHICH IS RUN OUT AT THE START—THE ENTIRE LENGTH OF THE FIELD.



ECONOMY SNAP VALVE
WITH LOCK LID AND
KEY



QUILL OR COUPLING
FOR THE END OF
HOSE



RUBBER TOP VALVE FOR
USE ON PLAYING AREAS
THE BEST ON THE MARKET

THE ECONOMY SNAP VALVE now replaces the old-time outlet box and faucet. It affords an automatic shutoff when used with the ECONOMY TRAVELING UNIT. At the same time it eliminates leaky and boggy places around outlets. It is a great time-saver in connecting and disconnecting hose and equipment. The valve is installed below the surface of the ground out of the way of a mower; there is no outlet lid to be left off, and thus many accidents are avoided. The water cannot be turned on without the quill, which is put away with the hose. A faucet key locks the lid of the valve when not in use, and thus prevents anyone tampering with the valve.

ECONOMY IRRIGATION CO., Inc.

Head Office and Factory: 3628 East Marginal Way, Seattle, Wash.

SAN FRANCISCO: 4516 Balboa Street.

LOS ANGELES: 1950 South Vermont

J. G. CREIGHTON, Special Representative