

DIAGRAM No. 1.

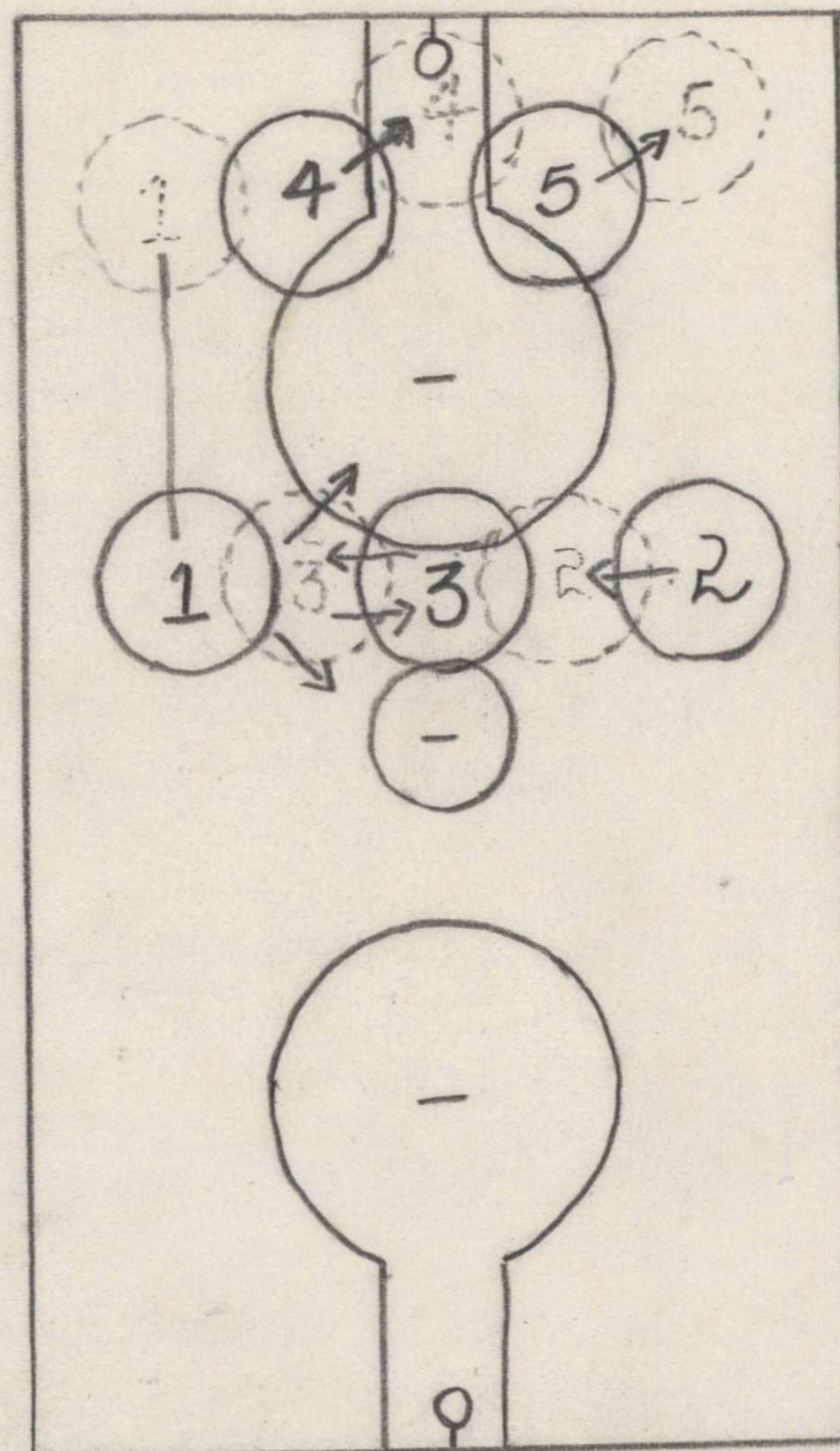


DIAGRAM No. 2

The idea of such a defensive mechanism is that the five men are attached together by an elastic band which is pulling with each shifting movement of the defense into a lopsided formation. When one player moves, the resultant direction of the other is fixed. Regardless of the place at which the offense thrusts, the entire defense moves conjointly and simultaneously to meet it.

If the opposition should place its two forwards in their offensive corners, the zone defense should shift to the following formation. Diagram No. 2.

One guard should rush out to within seven to ten feet of the offensive man in the corner and cover him much as a bird dog sets a quail. The second guard should move immediately from his position in the same direction and across toward the first guard to a point equi-distant from the original position of the two guards. The second guard should now be situated in the free-throw lane about seven feet in front of the basket. Since these zones are only fourteen feet in diameter, each man will have moved only seven to ten feet or a distance of only a little more than the radius of his circle.

The forward on the weak side of this play should drop back simultaneously to cover the other offensive man in the area just vacated by the second guard. Then the defensive center should shift about seven feet to the side toward the position just vacated by the defensive forward. The other defensive forward should shift laterally in the same direction, toward his own center.

I have now outlined a two-line defense with three men in the rear line and two in the front line. The dangerous points are covered and so are the offensive men. You will notice that the two guards were not drawn to their respective corners and thus did not weaken the defensive zone under the basket. Both guards should never be found out of their natural positions at the same time. A guard is most useful under his own basket. The forward should drop back to cover the other corner and thus permit the second guard to remain in protection of the most vulnerable point, around the basket. The center should not be drawn back out of position to cover a dangerous man near the basket.