

August 19, 1946

Mr. Ken Postlethwaite
Organization Director
Memorial Association of World War II

Dear Ken:

I think the scheme that you have worked out by classes, "In Memoriam", is a splendid conception.

With each month I believe the appeal is getting stronger. By shading the objectionable features of the donors and enhancing the outstanding appeals, I am sure the contributions will increase in number and in size.

This is a good get-up and I will be happy to receive a future edition upon publication thereof.

Yours very truly,

Forrest C. Allen
Varsity Basketball Coach and
Professor of Physical Education

FCA:MF

UNIVERSITY OF KANSAS
MEMORIAL ASSOCIATION OF WORLD WAR II
LAWRENCE, KANSAS

OFFICE OF THE
ORGANIZATION DIRECTOR

August 14, 1946

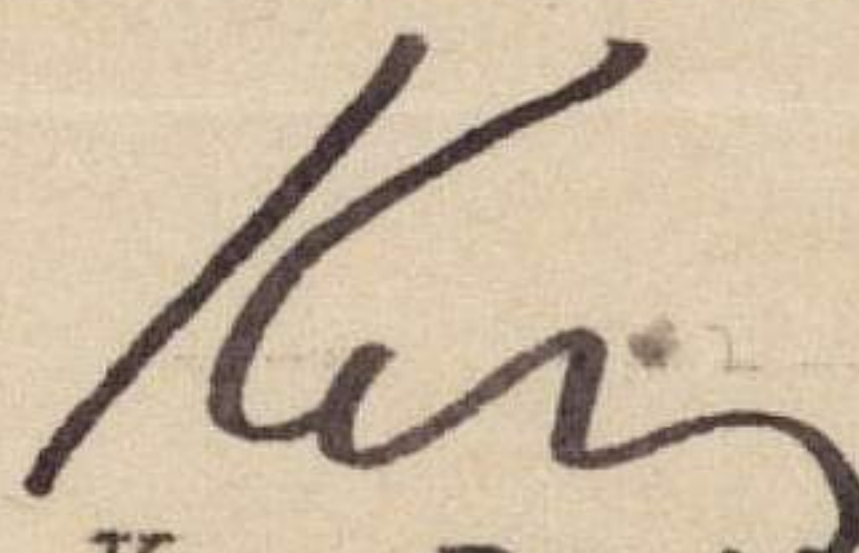
Dr. Forrest C. Allen
107 Robinson Gym
Lawrence, Kansas

Dear Dr. Allen:

Enclosed herewith is a copy of a memorial booklet being sent this week to all members of the class of 1939. Previously we have sent similar booklets to the members of the classes of 1936 and 1937.

Booklets are now being prepared for the class of '38 which lost 21 men; the class of '40 which lost 20; the class of '41 which lost 18; and the class of '42 which lost 29. Copies of these future editions will be sent to you upon publication.

Yours very,



Ken Postlethwaite

KP/mlw

August 5, 1946

Mr. Ken Postlethwaite, Organization Director
Memorial Association of World War II

Dear Ken:

I think the artist's conception of Memorial Campanile setup is a good one. This certainly will give the perspective contributors a fine conception of the possibilities. I think it is a fine idea.

Sincerely yours,

Forrest C. Allen
Varsity Basketball Coach and
Professor of Physical Education

FCA:MF

UNIVERSITY OF KANSAS
MEMORIAL ASSOCIATION OF WORLD WAR II
LAWRENCE, KANSAS

OFFICE OF THE
ORGANIZATION DIRECTOR

July 27, 1946

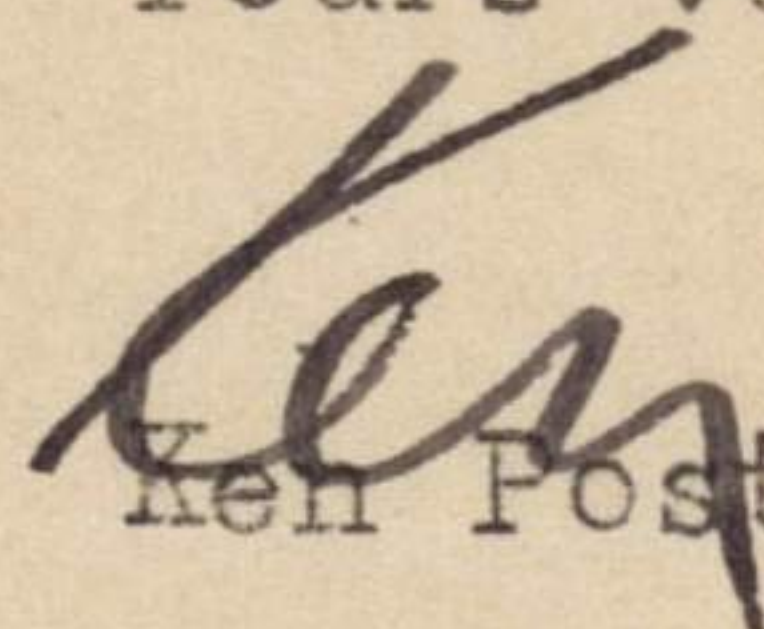
Dr. Forrest C. Allen
107 Robinson Gym
Lawrence, Kansas

Dear Dr. Allen:

Enclosed is a copy of a news letter which is being mailed to all K. U. Alumni this week. In it we have attempted to depict the Memorial more graphically than in any previous publication.

If you have any suggestions to offer in regard to our publicity, I would appreciate your letting me have them.

Yours very,


Ken Postlethwaite

KP/mlw
Enc.

University of Kansas NEWSLETTER

To

VOL. 45

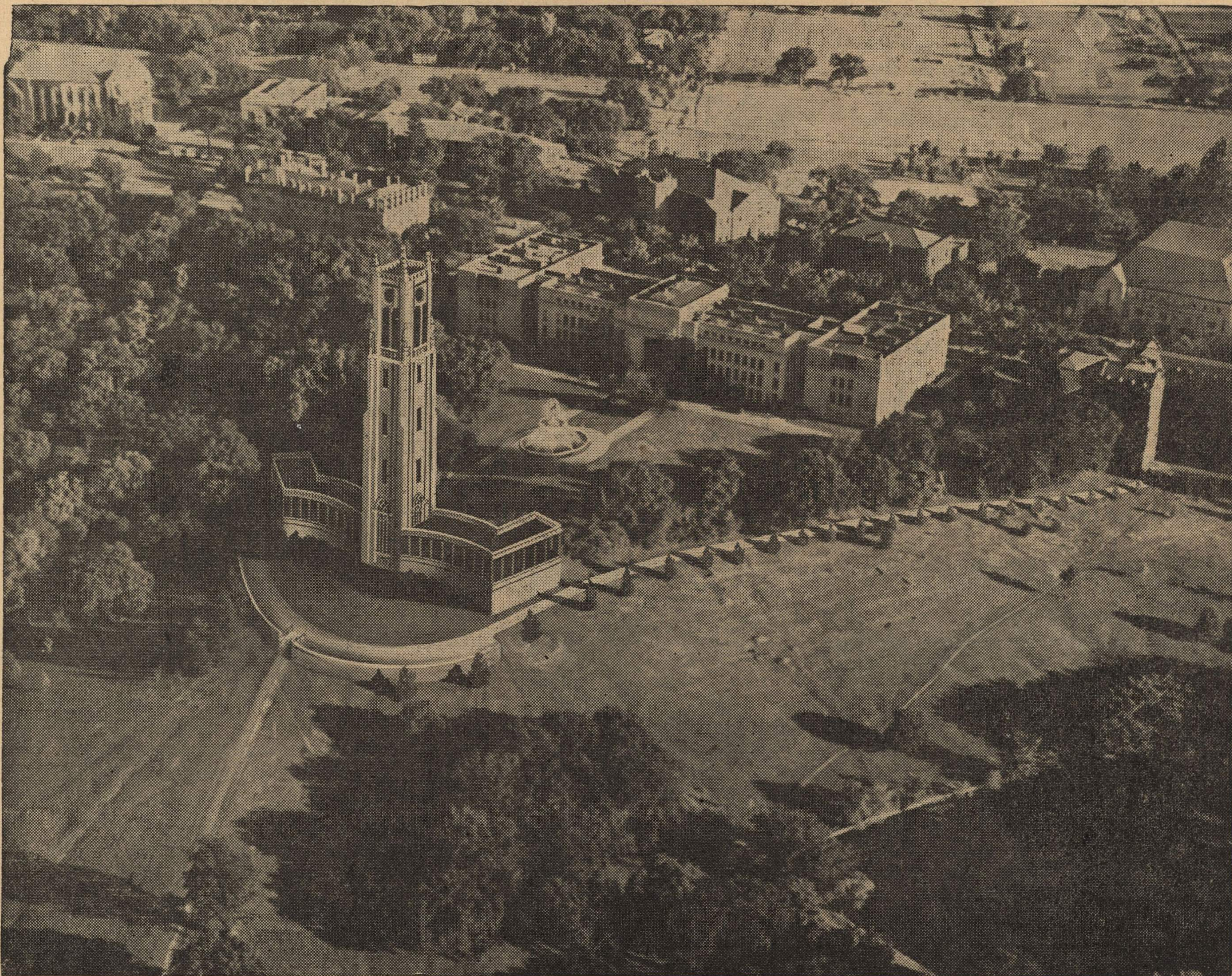
NO. 38

Published weekly during the school year by the University of Kansas at Lawrence. Entered as second class matter at the post office at Lawrence, Kansas, May 31, 1919, under act of August 24, 1912.

LAWRENCE, KANSAS

JUNE 22, 1946

The World War II Memorial



Shown above is an artist's conception of how the principal portion of the K.U. World War II Memorial will appear when completed. Standing on the point directly north of the center of Frank Strong Hall is the 175-foot Memorial Campanile which will house the bells of K.U. Curving around the base of the Campanile is shown a section of the Memorial Parkway which will be built around the outer edge of Mount Oread. Directly in front of the Campanile is shown a temporary parking area which can be used by visitors who wish to inspect the Campanile and its grounds, or watch the ever-changing panorama of the Kaw valley. Note the fountain between Frank Strong Hall and the Campanile.

The Memorial Parkway's Three Purposes

The Memorial Parkway—
a genuine "living" memorial;
a framework for the University's future expansion;
a vitally-needed traffic artery;

companion of the campanile as part of K.U.'s World War II Memorial to former students who lost their lives during the war.

Primarily, of course, the driveway is designed as a "living" memorial, a thing of beauty which continuously contributes something to the welfare of mankind. To Jayhawkers who have strolled through Marvin Grove and beside Potter Lake, who have walked in cap and gown down the path from the Rock Chalk Cairn to Memorial Stadium, it will renew memories of college days and college friends. Those classmates now represented by gold stars will live again along the living, growing parkway.

The driveway also is a contribution to the future. It will gain new friends for K.U. from among its visitors — friends who will appreciate and remember its scenic beauty. Together with the music of the mighty carillon, it will take its place among the many traditions already a part of the University.

A Blueprint for the Future

The University's physical growth, retarded by war-time shortages, is sched-

uled to begin soon. Several new buildings are planned, including engineering shops and five residence halls, and additions to be made to Watson Library and the Memorial Union. A glance at a map will show that there is no more space on top of the Hill for the new buildings. They must be located on the slopes, either north or south, as was the Military Science building, constructed during the war.

The Memorial Driveway will provide easy access to areas which otherwise would be difficult to reach. It will link all the buildings, old and new, into a unified campus and form a pattern of expansion for many years to come.

A New Traffic Artery

Those who have seen the center drive and parking lots choked with automobiles will agree to the need for new trafficways. Enrollments passed 5,000 this spring, and the administration's "working plan" for the fall term is based on a 7,000 figure. High enrollments — meaning more automobiles and bigger crowds — are expected to continue.

The Memorial will make possible enough parking space, mainly in lots south of the Hill, to triple the present capacity, providing places for an additional 829 automobiles. Particularly for special University events—concerts,

plays, and basketball games—will the driveway assume a much needed utilitarian task.

Gateways from the Class of '46

Formal gateways to the University, the first ever to be erected, are planned for the corner of Thirteenth and Oread streets. Money toward the cost of these entrances has been voted by the Class of 1946 as its class gift. As tentatively designed, archways will span the sidewalks along Oread street and sidewalks leading down behind the Memorial Union building, with space between for a fountain or a pool.

Beginning at the corner of Thirteenth and Oread (note map on p. 3), the driveway will wind down the slope past the Union, follow Mississippi street for approximately 150 yards, and then enter Marvin Grove behind the Chemistry building. On a level just below the brow of the Hill, the drive will make a wide curve behind Frank Strong Hall, passing below the campanile at the furthest point of the promontory jutting out behind the Hall.

At this point is planned a temporary parking place, at which visitors may pause to view the Kaw valley or to visit the campanile and carillon. The traditional path from the top of the Hill to the stadium, the one used by senior classes in Commencement ceremonies, will pass through the campanile and cross the driveway here.

Southwest From Potter Lake

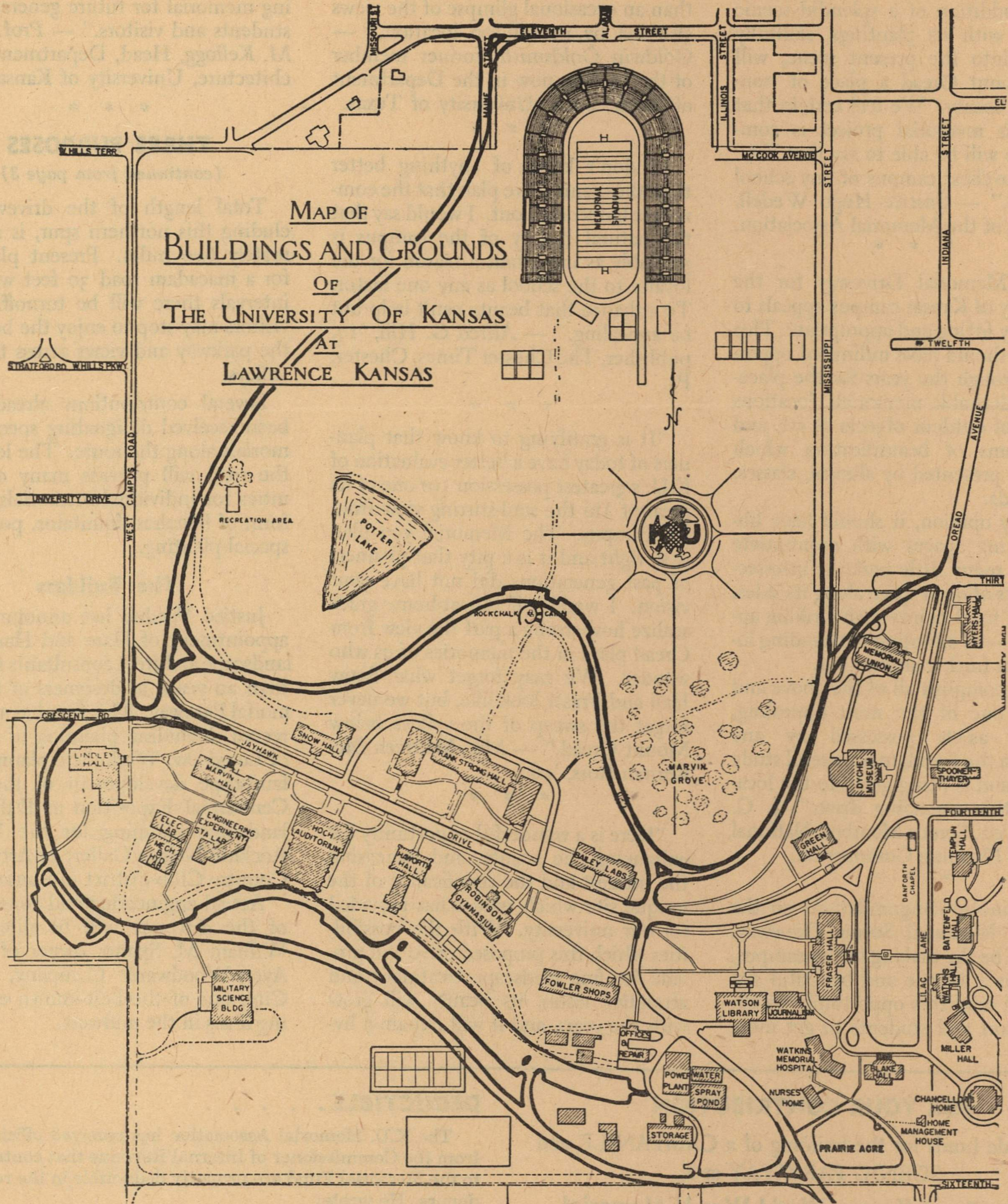
From the campanile, the road will continue below the brow of the Hill overlooking Potter Lake and will join Jayhawk Drive at the western end of the campus. At this point, it will pass the well-known circular flower bed. Curving around Lindley Hall, the driveway will begin its southern arc.

On the southern slope, the drive will be laid over the ruts of the still-unmarked Oregon Trail, as described by Prof. Robert Taft, of the University chemistry department, in his book, "Across the Years on Mount Oread."



This scene from a Kansas City parkway is similar to those which will be found along the Memorial Drive. Visitors may pause at several turn-off points to view the river valleys and the campus.

Tentative Route of the Scenic Driveway



(continued from page 2)

Professor Taft, who based his studies on old maps, writes that the main trail passed up the slope just west of the present location of the engineering buildings. Memorial Association officials have expressed the hope that suitable marking of that part of the

driveway which traverses the pioneer route will be possible, giving the new road historical as well as memorial significance.

At Sixteenth street, the driveway will connect with the south approach to the campus.

A north spur will be built if sufficient

funds are available. This portion of the project will begin southwest of Potter Lake, swing down through the University grounds, and join Maine street west of the stadium. Along this spur lie some of the best prospective building sites.

(continued to page 4, col. 3)

Comments on the Parkway

"The addition of a splendid scenic driveway with its plantings, skillfully blended into the present scene, will make Mount Oread a place of transcendent beauty. We feel certain that when this memorial project is completed we will be able to say that K.U. has the loveliest campus of any school anywhere." — *Justice Hugo Wedell*, President of the Memorial Association.
* * *

"The Memorial Driveway for the University of Kansas campus appeals to me as very fitting and appropriate. This driveway should have unlimited opportunity through the years for the placement of desirable memorials, locations for gifts of outdoor objects of art, and other items of beautification which might be presented by alumni, classes, and friends.

"In my opinion, it should have liberal parking spaces with appropriate planting, many little parks at intersections, bays of open space along its sides, and good focal points with striking approaches—all affording outstanding locations for further adornment.

"To accomplish all of the above and make it one of the most appealing, beautiful assets possessed by any campus in the world, most careful study must be and is being given to the location of this encircling drive." *J. C. Nichols*, '02, Senior Member, National Park and Planning Commission.
* * *

"My sincere congratulations on the proposed Memorial Scenic Driveway. It should be the making of the campus, which has a unique and beautiful site and lacks only this opportunity to enable visitors and students to get more

than an occasional glimpse of the views afforded by its hill-top location." — *Goldwin Goldsmith*, former member of the faculty, now in the Department of Architecture, University of Texas.
* * *

"I don't know of anything better than the scenic drive plan that the committee has worked out. I would say that the natural beauty of the campus is probably as important a reason for the loyalty to the school as any one factor. To enhance that beauty can't help but be appealing." — *Alfred G. Hill*, '17, publisher, *The Chester Times*, Chester, Pa.
* * *

"It is gratifying to know that planners of today have a better evaluation of K.U.'s greatest possession (or one of its greatest) in the soul-stirring view from the campus. The Memorial you plan is so right and it is a pity that planners of past generations did not have your vision. I wonder if stay-at-home grads realize how strong a part the view from Oread plays in the memories of us who wander. We may forget what Snow Hall and Fraser look like, but we never forget the sweep of the valleys below Mount Oread." — *Mrs. Maureen McKernan Ross*, '16.
* * *

"Here is a wonderful opportunity for enhancing the beauty, and increasing the interest and the significance of the unique site which nature has provided for our university. With the possibilities which this proposed drive will provide for fine landscape treatment and attractive vistas, its beauty will grow with the years, and it will remain a liv-

ing memorial for future generations of students and visitors." — *Prof. Joseph M. Kellogg*, Head, Department of Architecture, University of Kansas.
* * *

THREE PURPOSES

(continued from page 3)

Total length of the driveway, including this northern spur, is approximately two miles. Present plans call for a macadam road 30 feet wide. At intervals there will be turnoffs where visitors may stop to enjoy the beauty of the parkway and views across the river valleys.

Several contributions already have been received designating specific memorials along the route. The length of the road will provide many opportunities for individual memorials, in the form of benches, fountains, pools, and special planting.

The Builders

Justice Wedell has announced the appointment of Hare and Hare, K.U. landscape architect consultants for more than 20 years, as designers of the Memorial Parkway. This firm has a notable record, including planning of the city of Longview, Wash.; site planning and landscape development of the Texas Centennial Exposition at Dallas; and landscape planning for the William Rockhill Nelson Gallery of Art and the Country Club district in Kansas City.

Actual engineering and construction of the driveway will be directed by William M. Spann, owner of Tuttle-Ayers-Woodward Company, Kansas City, one of the best-known engineering firms in the midwest.

FOR YOUR CONTRIBUTION

To provide funds for the building of a **CAMPANILE** and **SCENIC PARKWAY** as a

University of Kansas World War II Memorial

I do hereby agree to pay to the University of Kansas Memorial Association of World War II the sum of \$.....
(Pledges may be accepted which are payable within one year from date.)

Signed

Address

DEDUCTIBLE

The K.U. Memorial Association has received official notice from the Commissioner of Internal Revenue that contributions to the Memorial Fund are properly deductible in the returns of donors. He wrote:

"It is the opinion of this office that with respect to contributions collected and used in the erection and installation of the memorial, you will be acting merely as a collecting agency for the University of Kansas, an instrumentality of the State of Kansas, and that contributions made to you for the purpose stated will constitute contributions to or for the use of the University. Such contributions will, therefore, be deductible in the returns of the donors in the manner and to the extent provided by section 23 (o) (1) and (q) (1) of the Internal Revenue Code, as amended.

July 15, 1946

Mr. Kenneth Postlethwaite, Organizing Director
University of Kansas Memorial Association of World War II

Dear Ken:

I have noticed by the paper that you have gone on a western tour and I will not endeavor to answer this fully, but when you return, if you will give me a call, I will be glad to transmit to you some of my ideas which I think may be helpful. It is just a little too long to write about.

Sincerely yours,

Forrest C. Allen,
Varsity Basketball Coach.

FCA:MF

UNIVERSITY OF KANSAS
MEMORIAL ASSOCIATION OF WORLD WAR II
LAWRENCE, KANSAS

OFFICE OF THE
ORGANIZATION DIRECTOR

July 5, 1946

Dr. Forrest C. Allen
107 Robinson Gym
Lawrence, Kansas

Dear Dr. Allen:

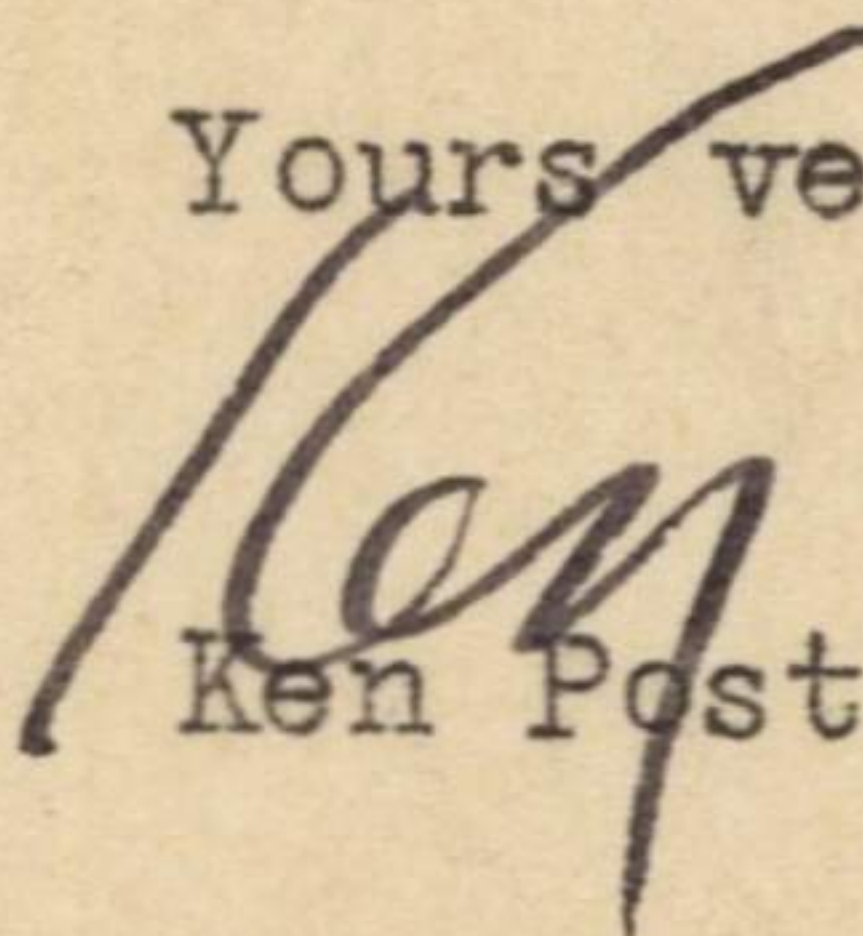
If you have had time to read the minutes of the Trustees' meeting which was held during Commencement week here last month, you will have noticed that Fred Ellsworth mentioned in his letter the manpower shortage which is seriously affecting the progress of the Memorial Campaign.

We will need, desperately, extra help this coming fall and winter. Between September 1 and January 1, we will need three extra men, and from January 1 to June 15, 1947, we will need two men. Frankly we are at a loss to know where to find this help and we are turning to you for some possible suggestions.

The type of man we need for our work is, of course, the type man who is able to find many other opportunities, any one of which offers permanent employment which we cannot extend. If you know of a man, or woman for that matter, who you think would be able to help with the Memorial Campaign, would you let us know. I will make every effort to contact him and attempt to line him up with us.

We will appreciate anything you can do. Best personal regards.

Yours very,


Ken Postlethwaite

KP/mlw

HUGO T. WEDELL, '15, '20
President
Supreme Court, Topeka

CARL V. RICE, '18
Vice President
Huron Bldg., K.C., Kans.

FRED ELLSWORTH, '22
Secretary
K.U. Alumni Office, Lawrence

C. B. HOLMES, e'15
Treasurer
7 E. 7th, Lawrence

KEN POSTLETHWAITE, Organization Director

University of Kansas Memorial Association of World War II

Lawrence, Kansas

June 22, 1946

TRUSTEES

Donald K. Alderson,
President Class of '45

Forrest C. Allen,
Chairman Dept. Physical Education

L. J. Bond,
Eldorado Attorney

Keith Bunnel,
President Class of '46

Mary Jo Cox
Past President Student Council

Allen Crafton,
Chairman Dept. Speech & Drama

Fred Ellsworth,
Sec'y Alumni Association

Albert E. Haas,
President Kansas City Alumni

Elizabeth Stephens Haughey,
Member Board of Regents

Justin D. Hill,
Lawrence Business Executive

Charles B. Holmes,
Past President Alumni Ass'n

Deane W. Malott,
Chancellor

Bertha Luckan McCoy,
Alumni Board Member

J. W. Murray,
Managing Editor
Lawrence Journal-World

J. C. Nichols,
City Builder of Kansas City

E. C. Quigley,
Athletic Director

Carl V. Rice,
K. C., Kans., Attorney

Roy A. Roberts,
Managing Editor K.C. Star

Charles B. Shaeffer,
Alumni President

Persis Snook
Past President Student Council

John G. Somers,
Newton Attorney

C. C. Stewart,
President K. U. Endowment Ass'n

Edward W. Tanner,
Kansas City Architect

R. B. Stevens,
Past President Alumni Ass'n.

Oscar S. Stauffer,
Past President Alumni Ass'n.
Chairman Board Regents

To Members of the Memorial Trustees Absent
From the Board Meeting June 16:

We are all sorry you could not be present
at the meeting last Sunday.

Here are minutes of the meeting for your
information.

Cordially yours,

Fred Ellsworth
Secretary

FE:mvn
Encl

EXECUTIVE COMMITTEE

Hugo T. Wedell

Carl V. Rice

Fred Ellsworth

C. B. Holmes

Charles B. Shaeffer

John G. Somers

Edward W. Tanner

MEETING OF THE TRUSTEES
UNIVERSITY OF KANSAS MEMORIAL ASSOCIATION OF WORLD WAR II
June 16, 1946 1:45 p.m.
PINE ROOM MEMORIAL UNION

Present: Hugo T. Wedell, president
Carl V. Rice, vice president
Charles B. Holmes, treasurer
Charles B. Shaeffer
Allen Crafton
J. W. Murray
C. C. Stewart
Bertha McCoy
Persis Snook
Richard B. Stevens
Fred Ellsworth, secretary
Ken Postlethwaite, organization director

Madeline Nachtmann Hurd, alumni director, guest
Ray S. Pierson, alumni director, guest
Alfred G. Hill, former alumni secretary, guest

Minutes of the meeting of December 16, 1945, were approved without detailed reading.

The secretary submitted a report to the board, which is attached to these minutes.

Mr. Stewart, president of the Endowment Association, announced the offer of stone for the campanile from land recently purchased by the Endowment Association. If the supply on that land proved unsatisfactory for any reason, he offered stone from his own farm. His offer was gratefully received by the board.

Mr. Postlethwaite presented a report on the progress of the campaign. Written copies were presented to all members present and were to be sent to all absent members, and to be carried in the secretary's official file for the board of trustees.

The chair called on Mr. Hill for comments. He expressed, first, enthusiastic approval of the project, and commendation on the carrying on of the campaign to date. He felt that no fatal mistakes had been made. It was his feeling that large individual gifts should be obtained, and campaigns and localities where large amounts can be collected should receive special attention. His opinion was that it would continue to cost money to get the job carried through, probably more than is outlined in the proposed budget.

Mr. Crafton expressed need for dramatization of the memorial. He thinks it is difficult for alumni to visualize the memorial properly. He recommended a model of the hill showing the campanile and the driveway to be shown at alumni meetings.

Mr. Stewart recommended recordings of carillon music for use in the campaign.

Mr. Rice stressed the importance of field men. Both he and Mr. Shaeffer had suggestions of individuals who might be obtained and of firms who might loan men for the campaign.

Mr. Pierson said the many other campaigns were messing up the memorial campaign.


Mr. Murray said he had been impressed with increased enthusiasm in Lawrence, particularly among ex-servicemen. He liked the idea of the model showing the Hill.

Mr. Postlethwaite read Mr. Tanner's letter regarding progress with the campanile and driveway architectural plans.

The chair posed the question concerning the naming of the carillon after an individual donor. There was discussion, but no vote.

Adjournment of trustees for meeting of Executive Committee.

Signed



Secretary

June 15, 1946

Justice Hugo Wedell and Memorial Trustees:

I would like to present a report of progress on the Memorial Campaign:

We have obtained something over \$50,000 in the first nine months of activity.

We have set up local organizations in many counties and cities. Ken Postlethwaite will give you the details on that.

We have spent \$10,387 getting all this under way.

Some terrible sins of omission and commission have been committed not a one of which will we admit for a minute as our fault. Here are some:

The campaign has been without benefit of big gifts obtained and announced in advance, except in a few localities.

We have not had adequate art work and promotional literature.

We have not had enough people officially connected with the campaign.

The campaign was not started promptly enough after the memorial was adopted, especially on the campus.

Here are some obstacles to overcome and circumvent, over which this board of trustees has no control.

The condition of affairs generally is disturbing and distracting. To carry on a campaign for anything, particularly something centered at a distant point, is like holding a picnic in a thunderstorm.

There is a great multiplicity of other campaigns in competition.

As in the case of any memorial, our particular choice is not unanimous. Furthermore, the campanile and driveway does not have the help of any special interest such as the sports enthusiasts, the journalists, and the like. It does not have the motivation that is sometimes built around a single personality.

Here are some of our suggested remedies and means of getting the job done:

(1) Create a finance committee which shall meet and give special attention to campaign techniques.

(2) Make an effort to streamline central office expense and set up, if possible, a close policy on expenditures which shall work in addition to the budget now in use.

(3) Set up a committee on publicity which shall give undivided attention to that field.

(4) Disabuse our minds of the idea that the campaign can be carried through in a few months. People seem to want considerable time to let the idea soak into their consciousness, and we find that it is soaking in.

(5) Develop special groups to work for the campaign--
classes, University societies and organizations, parents, and the
like.

The Alumni Association is giving this campaign its best attention and will continue to do so. It is absorbing an indefinite amount of the cost of expenses. That matter is being taken up with the alumni board. The organization director is doing a sincere, intelligent job. So far we have not been able to obtain the services of a vigorous sales type field representative. It may be questionable whether we want such a person. The boys we have had are two of the ablest young men the University has produced in the last half dozen years. Frankly, the local alumni committees have been pushing these boys around a little, putting them off, procrastinating, giving them the run around, and all that sort of thing--just as they have been handling the alumni secretary for the past 22 years.

The memorial trustees are strong enough to carry this job through, and there are some situations coming up in prospect that make things look hopeful. Nevertheless, it is going to be a job to reach \$500,000, and really there should be more than that amount to carry through the project as beautifully as it should be done.

Respectfully submitted,

Fred Ellsworth

Secretary

FE:mvn

June 10, 1946

University of Kansas
Memorial Association of World War II
Frank Strong Hall

Attention: Mr. Fred Ellsworth

Dear Fred:

I am enclosing my check in the amount of \$100.00.

Please mark my pledge paid.

Sincerely,

Director of Physical Education,
Varsity Basketball Coach.

FCA:MF

Enc.

HUGO T. WEDELL, '15, '20
President
Supreme Court, Topeka

CARL V. RICE, '18
Vice President
Huron Bldg., K.C., Kans.

FRED ELLSWORTH, '22
Secretary
K.U. Alumni Office, Lawrence

C. B. HOLMES, e'15
Treasurer
7 E. 7th, Lawrence

KEN POSTLETHWAITE, Organization Director

University of Kansas Memorial Association of World War II

June 8, 1946

Lawrence, Kansas

TRUSTEES

Donald K. Alderson,
President Class of '45

Forrest C. Allen,
Chairman Dept. Physical Education

L. J. Bond,
ElDorado Attorney

Keith Bunnel,
President Class of '46

Mary Jo Cox
Past President Student Council

Allen Crafton,
Chairman Dept. Speech & Drama

Fred Ellsworth,
Sec'y Alumni Association

Albert E. Haas,
President Kansas City Alumni

Elizabeth Stephens Haughey,
Member Board of Regents

Justin D. Hill,
Lawrence Business Executive

Charles B. Holmes,
Past President Alumni Ass'n

Deane W. Malott,
Chancellor

Bertha Luckan McCoy,
Alumni Board Member

J. W. Murray,
Managing Editor
Lawrence Journal-World

J. C. Nichols,
City Builder of Kansas City

E. C. Quigley,
Athletic Director

Carl V. Rice,
K. C., Kans., Attorney

Roy A. Roberts,
Managing Editor K.C. Star

Charles B. Shaeffer,
Alumni President

Persis Snook
Past President Student Council

John G. Somers,
Newton Attorney

C. C. Stewart,
President K. U. Endowment Ass'n

Edward W. Tanner,
Kansas City Architect

R. B. Stevens,
Past President Alumni Ass'n.

Oscar S. Stauffer,
Past President Alumni Ass'n.
Chairman Board Regents

EXECUTIVE COMMITTEE

Hugo T. Wedell

Carl V. Rice

Fred Ellsworth

C. B. Holmes

Charles B. Shaeffer

John G. Somers

Edward W. Tanner

Dear K.U. Friend:

This is a special request to you personally in connection with the campaign for our World War II memorial, the great carillon tower and memorial parkway.

We have now passed \$50,000 in gifts as a substantial starter on our goal of \$500,000. Some contributions which have been collected by local committees have not yet been reported. We know of individuals who definitely plan to make their contributions, but have not done it yet.

Just one week is left before Commencement. We are hoping sincerely that we can announce at the annual meeting, Monday, June 17, that the fund has reached \$100,000. Will you help us?

If you have charge of a local campaign will you please send every donation, pledge and promise to us so we may have it by Friday, June 14. We are not asking you to re-arrange your local campaign plans nor to break up any sequence that you have in mind if you are scheduled for summer or fall. Regardless of the situation there must be some few in your locality (even just your own contribution will help) which may be sent in.

If you are not connected with any local memorial campaign we hope you will send in your own contribution, if you haven't sent it already. To get the job done it will require

500 gifts at \$1,000.00 each or
1000 gifts at \$ 500.00 each or
5000 gifts at \$ 100.00 each or

--so on down the line, the smaller the average, the greater number of donations necessary. Our loyal supporters who can do so must keep up the average.

We'll be thanking you for your good help on this Commencement round-up.

Cordially,

Secretary

FE:mvn

*Proz - sample to trustees.
can you get a good
one for us next week?
JE*

Commencement Round-Up Report --- War Memorial at K U

Name _____ Address _____
City and State

Street and Number

Here are _____ contributions to ward the \$100,000 goal by Commencement Day, June 17

Remarks _____

Obtained by:

Gift

Paid

Balance

RECEIPT

Name

194.....

194.....

To provide funds for the building of a Scenic Driveway and Campanile as a

UNIVERSITY OF KANSAS WORLD WAR II MEMORIAL

In consideration of the gifts of others I do hereby agree to pay the sum of \$.....

to the University of Kansas Memorial Association of World War II.

In behalf of the University of Kansas Memorial Association of World War II, we acknowledge with thanks your contribution in the amount of

\$.....

Paid \$.....

Bal. \$.....

Balance to be paid as follows:

.....**Monthly**

Signed

.....**Quarterly**

Address

Or as follows

(Not later than June 15, 1947)

Obtained by:

CHARLES B. SHAEFFER, fs'16, President,
413 Interstate Building, Kansas City 6, Mo.

FRED ELLSWORTH, '22, Secretary,
Alumni Office, Lawrence, Kansas

HARRY W. FISHER, '13, Vice-President
Fort Scott, Kansas

DIRECTORS

HARLAND B. HUTCHINGS, '16,
1207 Grand, K. C., Mo.
OSCAR S. STAUFFER, fs'12,
Topeka State Journal, Topeka
HUGO T. WEDELL, '15, '20,
Supreme Court, Topeka
BERTHA LUCKAN MCCOY, '09,
Emporia
RAY S. PIERSON, '23,
Burlington
CLARENCE MCGUIRE, '29,
922 Oak, K. C., Mo.
RICHARD B. STEVENS, '25,
Lawrence
MADELINE N. HURD, '15,
224 Greenwood, Topeka
CHARLES B. HOLMES, e'15,
Lawrence
HAZEL CARSON BROOKS, '17,
208 Circle Drive, Wichita

ALUMNI ASSOCIATION of the UNIVERSITY OF KANSAS

PUBLISHER OF THE GRADUATE MAGAZINE

HEADQUARTERS—ROOM 226 FRANK STRONG HALL

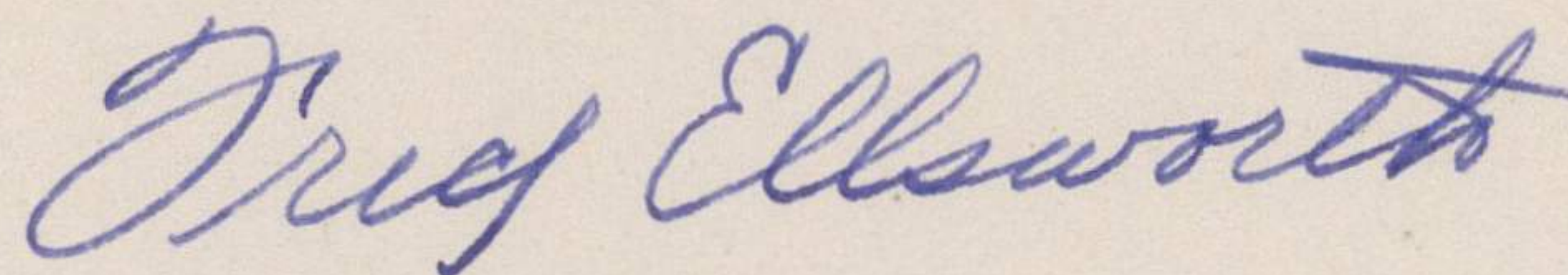
LAWRENCE, KANSAS

To Members of the Board of Directors
University of Kansas Memorial Corporation

Attached are minutes of the meeting held
last Saturday. Please let us have any questions or
corrections that you may have to suggest.

One correction that is to be made is the
insertion of the name of the student council secre-
tary among the board of directors on page one.

Respectfully yours,



Secretary

FE:mvn
Encl

MINUTES BOARD OF DIRECTORS
UNIVERSITY OF KANSAS MEMORIAL CORPORATION
May 25, 1946 10:45 a.m.
Pine Room Memorial Union

Present: Irving Hill, President
Forrest C. Allen
W. J. Baumgartner
Alberta Cornwell
Howard Engleman
Ogden Jones
Karl Klooz
C. C. Stewart
Henry Werner
Joan Woodward, 1946-47 Student Union Activities
President
Hermina Zipple, Director of the Union
Martha Peterson, Pan-Hellenic Advisor and Director
of Union Operating Committee
Fred Ellsworth

Minutes of the meeting of June 23, 1945, were read and approved with the understanding that amendments to the Constitution and By-Laws voted at that meeting subject to review by Council were satisfactory to Mr. Stewart. Mr. Stewart, not being sure whether he had studied the amended constitution and by-laws, agreed to submit any suggestions he had for changes at the next meeting of the Board.

Moved by Mr. Baumgartner and seconded by Mr. Jones that the present Board be re-elected and that the three members who serve ex-officio, as provided by Article I Section II of the constitution and by-laws--the president and secretary of the All Student Council and president of the Student Union Activities Board--replace their predecessors. These officials are Howard Engleman, Student Council president, the secretary of the Council to be chosen by that body May 28, and Joan Woodward, president of the Student Union Activities Board. Carried. Mr. Engleman had already taken office. The Council Secretary and student Union Activities president were to take office soon.

Moved by Miss Cornwell and seconded by Dr. Allen that Miss Martha Peterson be elected a member of the Board of Directors to replace Mrs. Fred Harris, resigned. Carried.

Composition of the Board of Directors therefore was as follows:

F. C. Allen	Walter J. Keeler	C. C. Stewart
W. J. Baumgartner	Karl Klooz	Walter G. Thiele
George Bradshaw	D. W. Malott	Esther Twente
Howard Engleman	Drew McLaughlin	Leslie Waters
Porter Fones	Elizabeth Meguiar	Henry Werner
Irving Hill	Martha Peterson	Joan Woodward
Ogden Jones	Richard B. Stevens	

Moved by Mr. Stewart and seconded by Dr. Allen that all officers be re-elected.

Dr. Allen moved and Mr. Stewart consented and seconded his motion

that Howard Engleman be included among the officers as 3rd vice president. Carried. The officers as elected are as follows:

President:	Irving Hill
Vice presidents:	1st Henry Werner
	2nd Ogden Jones
	3rd Howard Engleman
Treasurer:	Karl Klooz
Secretary:	Fred Ellsworth
Auditor:	Frank W. Hosford

In order to clarify the duties and responsibilities of the several vice presidents it was moved by Mr. Jones and seconded by Dr. Allen that: it is the sense of this board that the first vice president shall preside at meetings and take the place of the president in his other duties in the absence of the president; the second vice president shall serve in the same capacity in case of the absence or vacancy of both the president and first vice president; the third vice president shall take over likewise in absence of all three of the others. Carried.

Moved by Mr. Werner and seconded by Dr. Allen that Ogden Jones and Leslie Waters be elected as the two members of the Executive Committee who are chosen by the Board of Directors. Carried.

According to Article V Section II of the Constitution and By-Laws the Executive Committee will therefore be composed of the following persons:

President:	Irving Hill
Bursar:	Karl Klooz
Director of Union:	Hermina Zipple
Two members chosen by Board of Directors:	Mr. Waters Mr. Jones
President of Student Union Activities:	Joan Woodward
A second member of opposite sex from the Student Activities President:	(to be chosen by the Council)

Mr. Klooz gave a financial report, a copy of which is attached to these minutes. Qualifying conditions not mentioned on the report are given as follows:

Incumbrances on the surplus of \$67,292.48 which had been voted by the Union Operating Committee to be spent were:

Loan to Student Book Store	\$10,000.
Remodeling for book store facilities	2,000.
Furnishings for Union	7,000.
Expense on outdoor recreation area west campus:	800.
Total	<u>19,800.</u>

Assets in funds known to be coming in:	
Student Activity fees paid by students and yet to be turned over by the University	\$4,500.

Moved by Miss Cornwell seconded by Mr. Werner that Mr. Klooz's report be accepted. Carried.

A report on operations at the Union and plans for inclusion of a student book store as well as plans for building an addition to the north was given by Mr. Werner.

In regard to opening the book store, Messrs. Stewart and Hill inquired about the rate of interest to be charged, the security to be put up by the book store, the operating committee's authority to make such a loan and the rental provision to be made with the book store. Mr. Werner informed the Board that the interest rate had not yet been worked out, that proper security arrangements would be made so that the Union could have control if the enterprise did not move forward satisfactorily, that rental provisions had not been drawn up, but they would be based at least partly on profits made by the book store (he said that in a survey of 21 student book stores, it was found that the profits ranged from 12% to 15%.) It was agreed that authority for making the loan should be voted by the Executive Committee before the loan is actually made and the provisions drawn up.

Moved by Mr. Jones, seconded by Dr. Allen, that Mr. Werner's report be accepted. Carried.

Mr. Werner showed architect's drawings of the proposed addition to the north of the Union providing 3600 square feet of additional floor space plus about one third that much more for additional kitchen facilities. All of this was to be a one-story structure built of concrete and concrete blocks to be faced with brick to match the present structure, when brick is available. Mr. Werner advised of efforts being made to get that ready by the opening of school in the fall. Costs, according to the state architect, would be something less than \$100,000.

In addition to the surplus accumulation on hand at the present, he advised of a greatly increased income to be received from increased student fees of \$5 a semester.

After discussion, it was moved by Mr. Jones and seconded by Dr. Allen that the Board authorize a Union Operating Committee to proceed with construction of the unit described by Mr. Werner, subject to arrangement of a financial plan which will be accepted by the Memorial Corporation officers and University officials. Carried.

Adjournment on motion of Mr. Baumgartner.

Signed _____

Secretary

CHARLES B. SHAEFFER, fs'16, President,
413 Interstate Building, Kansas City 6, Mo.

FRED ELLSWORTH, '22, Secretary,
Alumni Office, Lawrence, Kansas

HARRY W. FISHER, '13, Vice-President
Fort Scott, Kansas

DIRECTORS

HARLAND B. HUTCHINGS, '16,
1207 Grand, K. C., Mo.
OSCAR S. STAUFFER, fs'12,
Topeka State Journal, Topeka
HUGO T. WEDELL, '15, '20,
Supreme Court, Topeka
BERTHA LUCKAN MCCOY, '09,
Emporia
RAY S. PIERSON, '23,
Burlington
CLARENCE MCGUIRE, '29,
922 Oak, K. C., Mo.
RICHARD B. STEVENS, '25,
Lawrence
MADELINE N. HURD, '15,
224 Greenwood, Topeka
CHARLES B. HOLMES, e'15,
Lawrence
HAZEL CARSON BROOKS, '17,
208 Circle Drive, Wichita

ALUMNI ASSOCIATION of the UNIVERSITY OF KANSAS

PUBLISHER OF THE GRADUATE MAGAZINE

HEADQUARTERS—ROOM 226 FRANK STRONG HALL

LAWRENCE, KANSAS

May 16, 1946

F. C. Allen
W. J. Baumgartner
George Bradshaw
Leonard Brown
Alberta Cornwell
Mary Jo Cox
Porter Fones
Mrs. Fred Harris
Irving Hill
Ogden Jones

Henry Werner

Walter J. Keeler
Karl Klooz
D. W. Malott
Drew McLaughlin
Elizabeth Meguiar
Richard B. Stevens
C. C. Stewart
Walter G. Thiele
Esther Twente
Leslie Waters

To Members of the Board of Directors, University of Kansas
Memorial Corporation:

You are asked to attend a meeting Saturday, May 25,
at 10:30, in the Pine Room of the Memorial Union.

The purpose of the meeting is to hear a financial
report, and reports of the Union Operating Committee on its plans
for extension of the Union's facilities and expansion of its acti-
vities now under way, to fill vacancies on the board and to elect
officers and committees.

The meeting will be followed by a luncheon as guests
of the Union in the English Room. Will you kindly advise whether
you will attend.

Fred Ellsworth
Sey

May 11, 1946

Mrs. Flora S. Boynton, Secretary
Kansas University Endowment Association
Lawrence, Kansas

Dear Mrs. Boynton:

Thank you for your explanatory letter
of May 4. This gives us the information that
we desire.

I can appreciate how busy you were
with the Summerfield Scholarship examination.

Sincerely yours,

FCA:MF

Director of Physical Education,
Varsity Basketball Coach.

KANSAS UNIVERSITY ENDOWMENT ASSOCIATION
LAWRENCE, KANSAS

May 4, 1946

Dr. F. C. Allen,
Robinson Gymnasium,
University of Kansas.

Dear Dr. Allen:

Last week your secretary phoned a request for information regarding the Francisco Memorial and the Medical Student Union Building Funds,- the amount of money contributed to these funds by residents of Lawrence. We did not have our list "broken down" into localities, and I was too occupied with the Summerfield Scholarships final examinations to obtain the information you required at the time she phoned. Here it is now: Francisco Memorial \$1,363.00 ; Medical Student Union Building \$210.00. This Lawrence list includes members of the faculty and townspeople.

I hope this information is not too late for the use you wished to make of it.

Very truly yours,

Flora S. Boynton
Mrs. Flora S. Boynton,
Secretary.



*"Far
above the
golden
valley"*

C.A. Posty

**UNIVERSITY OF KANSAS
MEMORIAL ASSOCIATION OF WORLD WAR II
LAWRENCE, KANSAS**

May 6, 1946

Dr. and Mrs. E. C. Allen
831 Louisiana
Lawrence, Kansas

Dear Dr. and Mrs. Allen:

Just a word of appreciation for your time
and effort in attending the World War II
Memorial conference Sunday.

It was extremely helpful to us to have
you present.

Yours very truly,

Ken
Ken Postlethwaite
Organization Director

KP:bp