

University of Kansas NEWSLETTER

To

VOL. 45

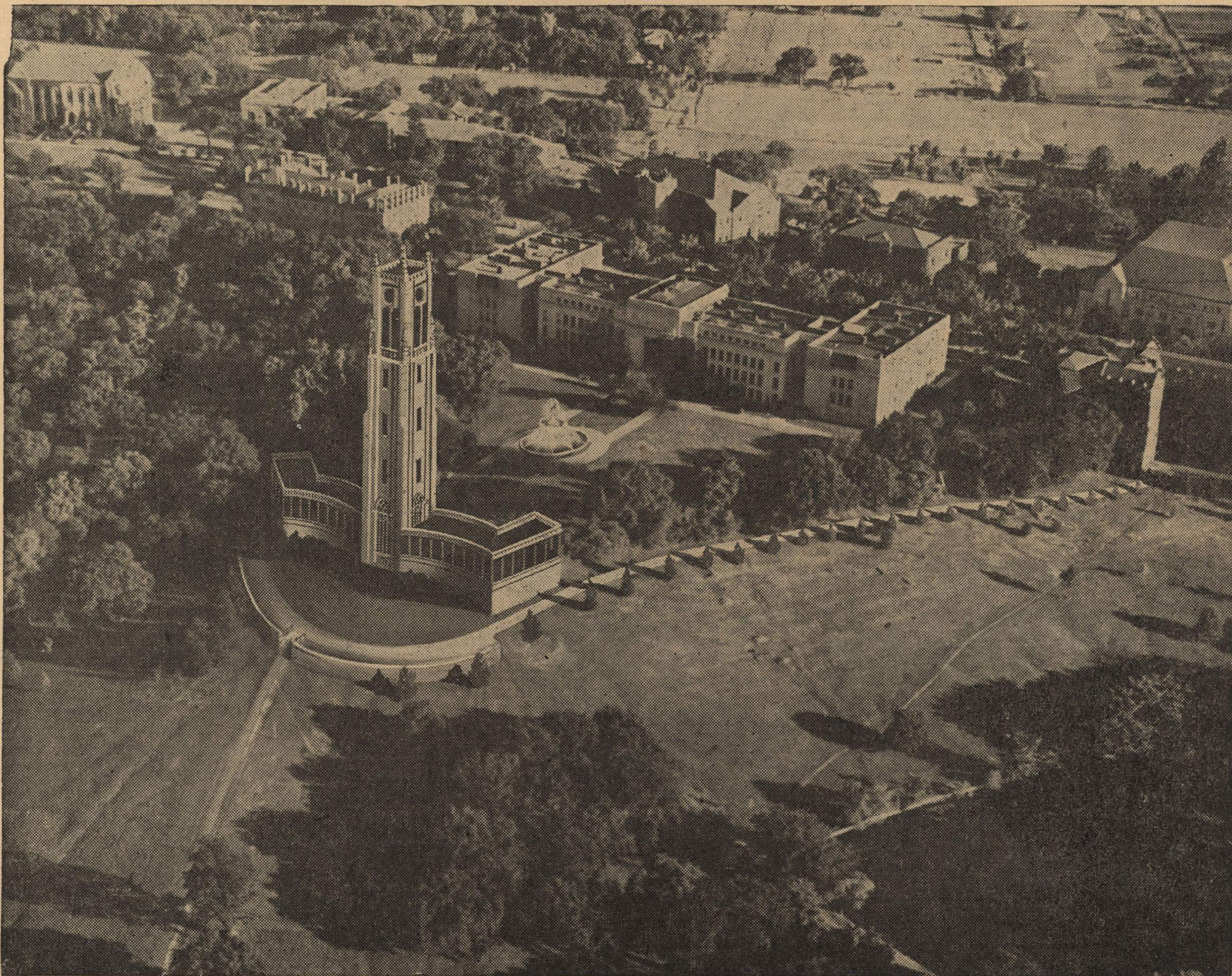
NO. 38

Published weekly during the school year by the University of Kansas at Lawrence. Entered as second class matter at the post office at Lawrence, Kansas, May 31, 1919, under act of August 24, 1912.

LAWRENCE, KANSAS

JUNE 22, 1946

The World War II Memorial



Shown above is an artist's conception of how the principal portion of the K.U. World War II Memorial will appear when completed. Standing on the point directly north of the center of Frank Strong Hall is the 175-foot Memorial Campanile which will house the bells of K.U. Curving around the base of the Campanile is shown a section of the Memorial Parkway which will be built around the outer edge of Mount Oread. Directly in front of the Campanile is shown a temporary parking area which can be used by visitors who wish to inspect the Campanile and its grounds, or watch the ever-changing panorama of the Kaw valley. Note the fountain between Frank Strong Hall and the Campanile.