

On the opposite page are face views of the old 4'x6' backboard (fig.2) and the new modified board (fig. 1) which measures 18" narrower in width and 13" narrower in height than the old board. Since most present installations have attachment fittings placed as close as possible to the edges of the backboard it is obvious that alteration of the existing structures is necessary to provide the more closely spaced attachment points needed for the smaller board. It must also be noted that while the basket ring (goal) remains at 10 feet above the floor the bottom of the modified backboard is to be set 9 feet 9 inches from the floor whereas the old board was placed an even 9 feet above the floor. This also necessitates relocation of the attachment fittings. See sketch (fig. 3) below for comparative view of the old and the new modified backboards and the relative locations of the attachment points.

\* Note: All dimensions used in this reference are those used in the design construction and assembly of Medart Basketball Equipment.

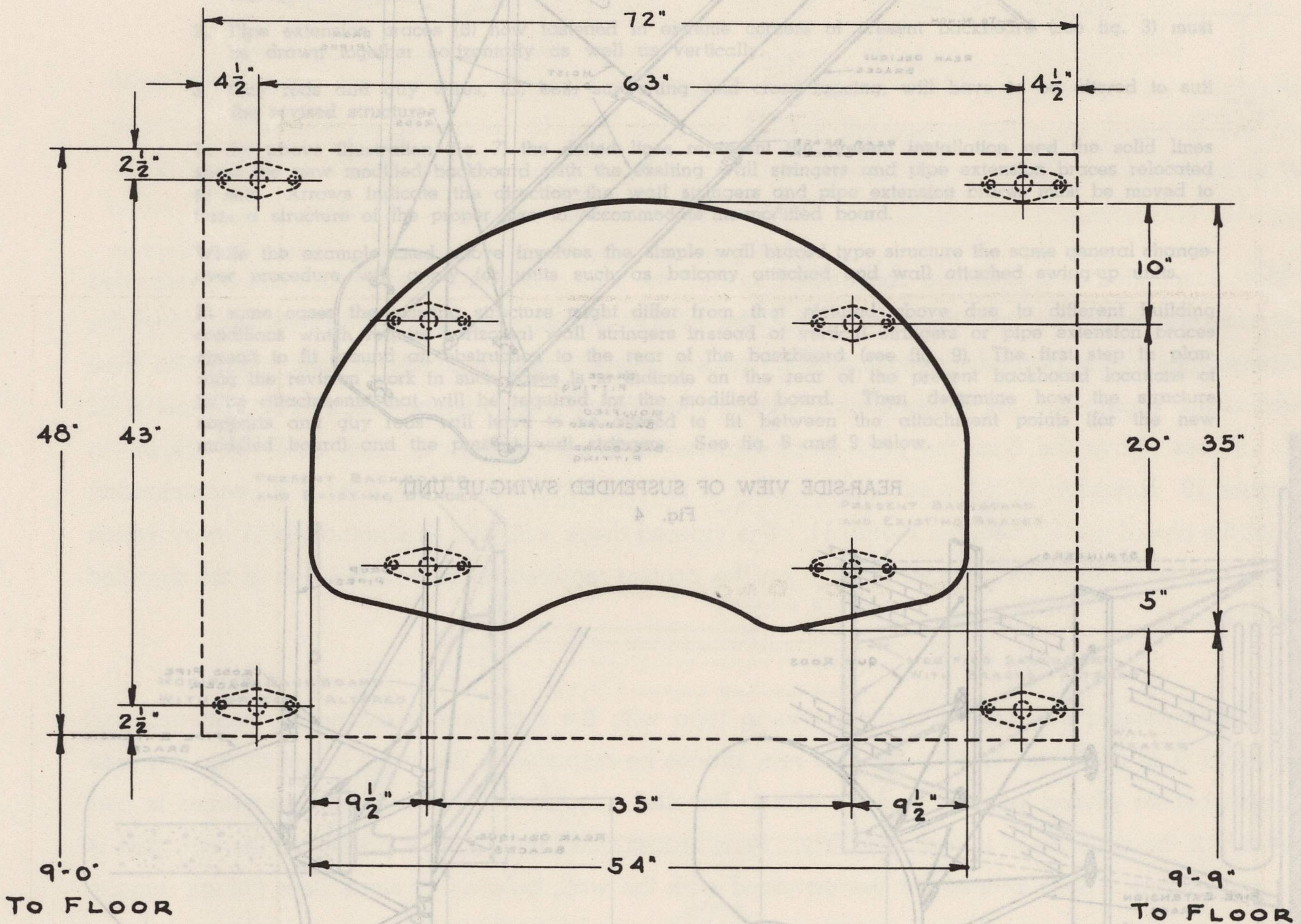


Fig. 3