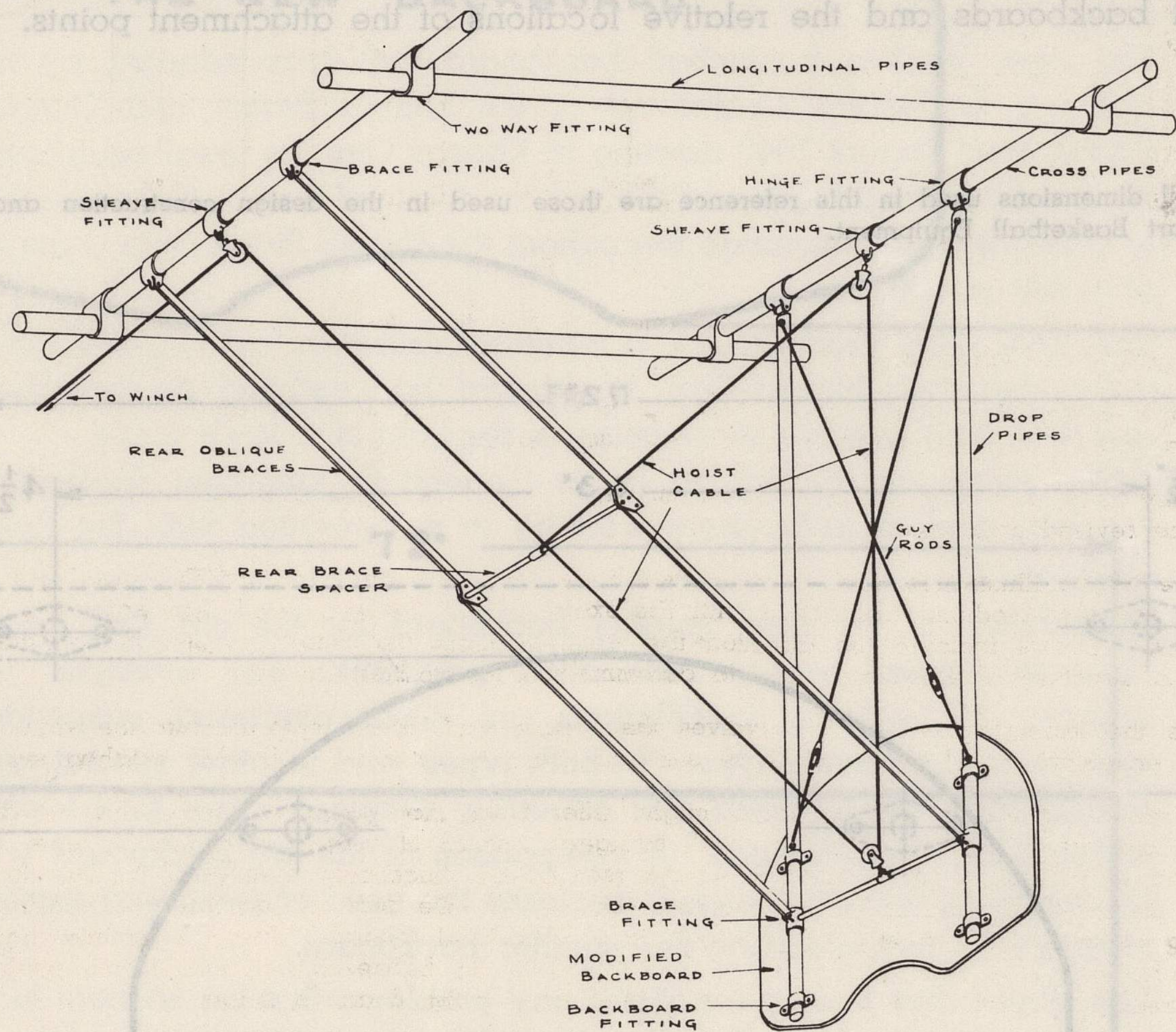


The illustrations on this page show most all of the major parts of backboard supporting structures. The rear-side view (fig.4) of a suspended swing-up unit involves such parts as drop pipes, hinge fittings, rear oblique braces, etc., all of which will require alteration or relocation when revamping the structure to accommodate the new modified backboard. The front-side views (fig. 5 and 6) picture important pieces not shown in (fig. 4) i.e., the pipe extension brace and cross pipe spacer. These parts will also be effected by structure changes. Heavy supporting members such as longitudinal pipes and cross pipes of superstructures of suspended units will be relocated only in rare instances. Such cases will receive detailed treatment later in this pamphlet.

IT IS SUGGESTED THE INDIVIDUAL ASSIGNED THE STRUCTURE REVISION WORK BECOME FAMILIAR WITH THE PART NAMES USED IN FIG. 4, 5 AND 6 AS THESE WILL BE REPEATED FREQUENTLY IN THIS REFERENCE.



REAR-SIDE VIEW OF SUSPENDED SWING-UP UNIT

Fig. 4

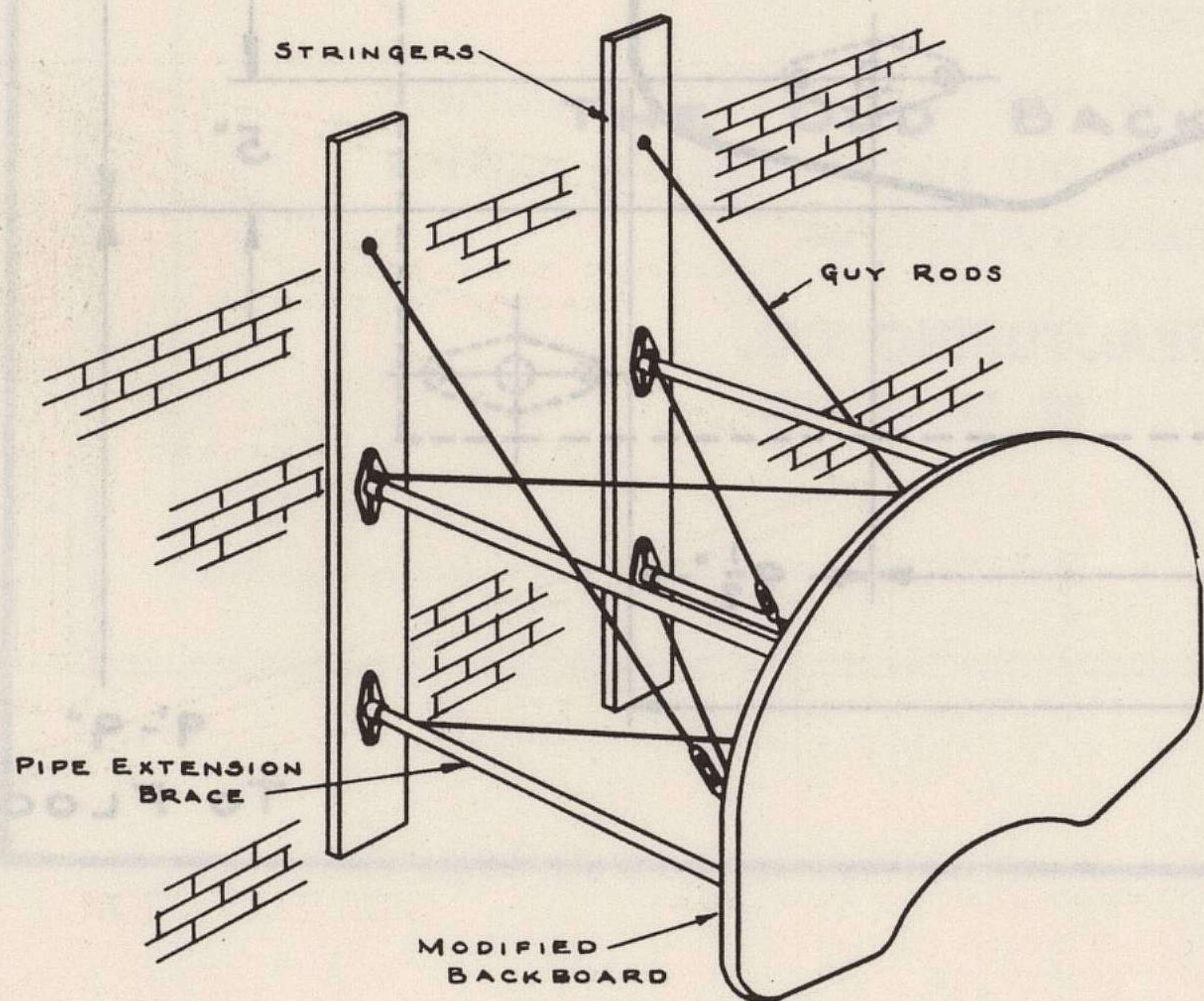


Fig. 5

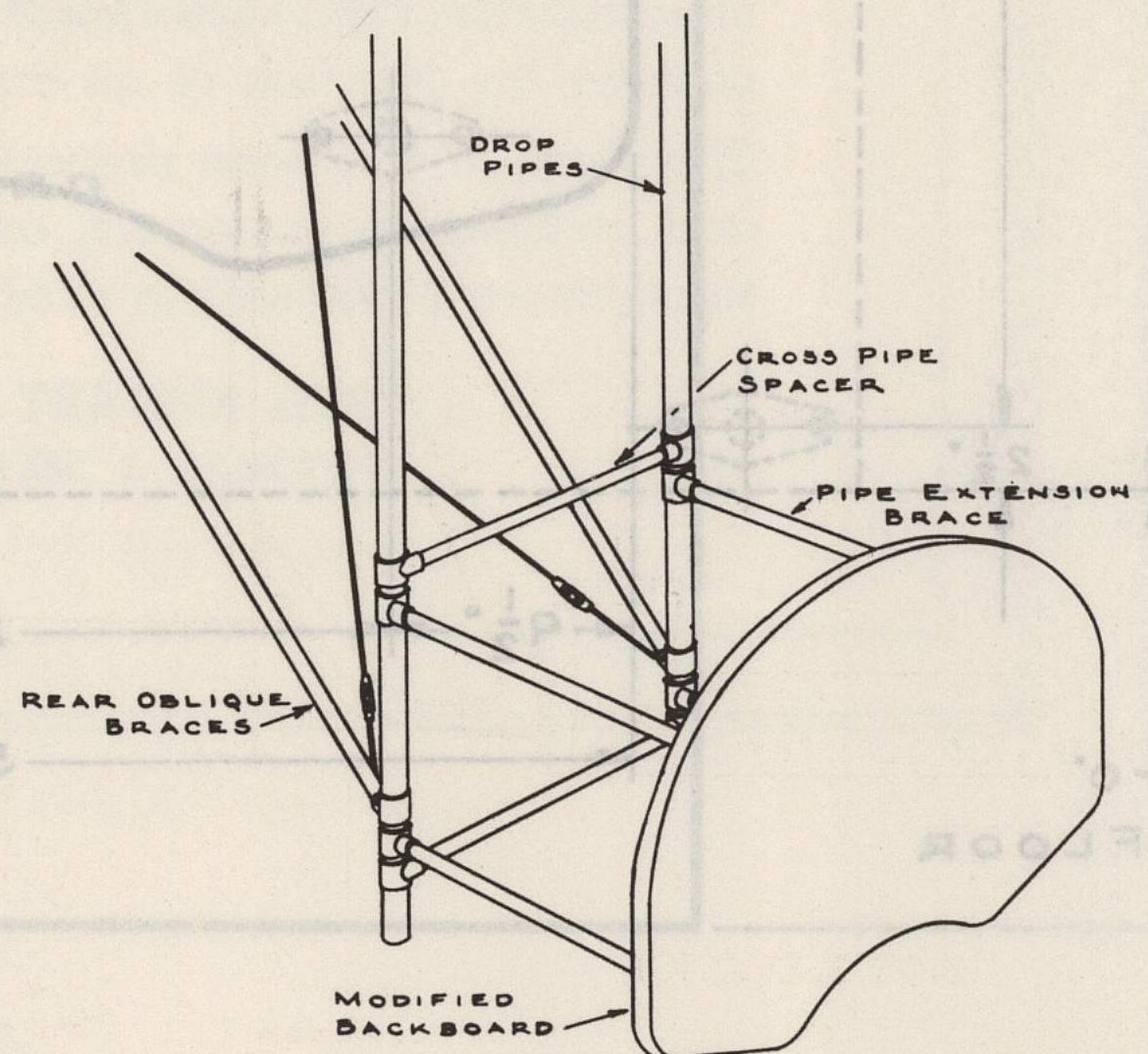


Fig. 6