

TEAM	PLAYER	NUMBER.	FIELD GOALS			FREE THROWS			MINUTES PLAYED....	NET EVALUATION POINTS	EVALUATION POINTS PER MINUTE.	PLAYING EFFICIENCY.	BALL HANDLING ERRORS.
			Attempted.	Made.	Per cent.	Attempted.	Made .	Per cent.					
Kansas	Johnson	2	2	0	.00	0	0	.00					
	Breescher	3	12	4	.33	4	2	.50					
	Black	10	34	10	.29	7	5						
	Haire	12	1	0	.00	2	0	.00					
	Miller	13	21	5	.23	1	1	1.00					
	Evans	15	5	0	.00	0	0	.00					
	Soelenberger	20	3	0	.00	1	1	1.00					
	Ballard	7	3	1	.33	1	1	1.00					
	Stacker	8	1	1	1.00	2	1	.50					
	Murich	6	4	0	.00	0	0	.00					
		5	0	0	.00	1	1	1.00					
			83	21	.24	19	12	.63					
TOTALS.													

Kansas vs. Oklahoma Date 1/6/42 Jessup East Org. Loft.
Team Oklahoma

FIRST HALF

1. Recovery of ball off own backboard 32 30 32 14 32
2. Recovers ball off opponents backboard 32 14 30 16 30 16 32 32
3. Fouling opponent with ball 32 16 32 32 16
4. Fouling opponent without ball 16 19 19
5. Violation 14 30 32 19
6. Offensive personal fouls _____
7. Blocking opponents shot _____
8. Intercepting opponent's dribble 24
9. Intercepting opponent's pass 30 19
10. Recovers Jump ball 30 24 24
11. Wild pass to opponent 30 30
12. Wild pass out of bounds 30

SECOND HALF

1. Recovery of ball off own backboard 32 32 32 16 15 22 30 20
2. Recovers ball off opponents backboard 19 16 32 22 16 32 30 13 16
3. Fouling opponent with ball 19 16 13 14 22 24 13 15 20
4. Fouling opponent without ball 19x
5. Violation 14 16 30 16 13 14 20
6. Offensive personal fouls _____
7. Blocking opponents shot _____
8. Intercepting opponent's dribble 19
9. Intercepting opponent's pass 19
10. Recovers Jump ball 19
11. Wild pass to opponent 30 30 19
12. Wild pass out of bounds _____

OKLAHOMA

Black	38
Hall	4
Miller	33
Ballard	2½
Walker	3
Evans	37
Buescher	24
Johnson	6
Sollenber.	38
Ulrich	2
Hunter	10½
Blair	2

Rough

East Org. Post

Kansas vs. Oklahoma

Date 1/6/42

Team Kansas

FIRST HALF

- 1. Recovery of ball off own backboard 15-10-13-10-13-13-10-10-13-3-3-15-12
13-15-15-15-
- 2. Recovers ball off opponents backboard 13-10-5-10-20-15-20-20-20-13-20-20
- 3. Fouling opponent with ball 13-15-5-15-3-10-10-
- 4. Fouling opponent without ball _____
- 5. Violation 13-15
- 6. Offensive personal fouls _____
- 7. Blocking opponents shot 20
- 8. Intercepting opponent's dribble 20
- 9. Intercepting opponent's pass 10
- 10. Recovers Jump ball 13-
- 11. Wild pass to opponent 20-20-3-
- 12. Wild pass out of bounds 3-15-10 10-2-

SECOND HALF

- 1. Recovery of ball off own backboard 10-15-13-15-10-3-10-10-10-10-5-7
- 2. Recovers ball off opponents backboard 10-10-3-10-20-20-10-10-10-15-20-10-8
8-5
- 3. Fouling opponent with ball 13-3-15-20-13
- 4. Fouling opponent without ball _____
- 5. Violation 16-10-3
- 6. Offensive personal fouls _____
- 7. Blocking opponents shot 20
- 8. Intercepting opponent's dribble _____
- 9. Intercepting opponent's pass 2-10-8
- 10. Recovers Jump ball 20-10-7
- 11. Wild pass to opponent 20-
- 12. Wild pass out of bounds 15-

Baringer - Boots

Thrust Organ lost.

GAME Oklahoma - Kansas

DATE Jan 6, 1942

Kansas. Half X 26 X 26

10-3-15-20-15-5-15-20-15-10-15-5-20-
 (10) 13-15-5-15-20-15-13 15-10-20-15-5-15
 20-(13) (10)-(13) 20-15-13-5 10-15-15-20
 5-15-20-10 5-15/10/20/20/5-15-20-15-13
 15-13-20-5-10/15-10-13/20-13-5-13-10
 20-15-5-15-5-15-20-10-5-15-20-5-13
 5-10-20-5-13-10 13-10/20-5/20-5-10/
 20-15-3-20-3-13/20-13-3-10/20-3
 15-3/15-3 13-10/13-20-15-10-3-13/
 10-20-13-3-13-3/20-15-3-20-10/15-10-15
 20-3-15-13-10-13-10/20-15/20-13-3/
 20-3-15-3-13-3-10/20-3/20-15-3-15-
 13-3/20-15/13/20/15-3-10-3-10-15/15-
 13-20-3-15-20/20-3-15-13-10-3/20-
 15-2-20-2-10/15-20-2-15-2-10-13/
 20-15-2-20-10/15-2/15-20-13-10-2-20
 15-10/10-15-2/15-10/ Half
 15-2-15-2-13-10/15-2-20-13-20-2-15-2-10/2-13-2/
 15-13-20-2-15-2-15-2-15-13-10/10-2-13/
 3-13-3-15/20-3-15-20-10/15-3-20-3-13-10-13/
 3-10/10-3/13/3-13-3-20-13-15-2-20-3/
 10-13-3/3-13-15-20/15-3-20-3-10-15-13-10/
 10-10-12/10-3-20-15-3-20-3-12/10/
 20-15-3-10-3-20-2-12-20-12-20-3-15-3-10/
 10-12-10/3-12-15-3-20-3-15-3-10-3-20-15
 10/12/20/10-20-3-10-20-3-15-3-12-10-3
 20-15/10/10-15-12/15-13/20-13-3-3-3/
 20-3-20-3-13-10/15-10-15-10/13-10/
 20-3-15-3-10-3-10-3-20-3-10-20-13/
 20/20-15-13/20-3-13-3-13-3/3/3-13-10-3-
 15-3-15-10/3/20-13-3-15/3/3-10/10-15-10
 3/10-10/3-10/15-3-10-3/10/10/8-5-10-5
 8-15-8-20 7-8-10-7-8/5-7-10/8-20/8-7-10/

GAME _____

DATE _____

5-10-6-7-10/8/7/7/5-6/6/14/

Final

KY	54
OU	32

GAME

Oklaoma - Kansas

DATE

Jan 6 '42

Oklaoma 2nd Half

19-14-16-14(19)/32-30-14-19-14-30-19/19-32(30)/32-16-30-16-

30-32(14)(32)/16-19-32(14)/32-30-14/19-30-16/22-16/14-16-30-2(14)/

16-14-30-22-30-14/30-14-30-16/30-19(24)/19-24-14-24-32-19-24-19-24-19(24)/

19(30)/32-30-16-14-16-14-30-32(14)-14-16(32)/30-32-22-30-16-32(30)/16-22/

22-14-30(16)/16-30-14-16-22-30-14(30)/22-30-14-16(32)/30-22(14)/32(14)

(32)/30-22-14-22-16-22(14)-16-32(30)/14-30-22(14)/13-22-13(15)(15)/

16-22-13-22/30-13-14-15-14-15-14-30-15(22)/14-24-30-14-30-15/22-24-22

30-22-15-30(22)22-15-30(14)-24/13-14-15-14-24-13-24(14)/

(14)/24-20-24-20-13-15-13/20-13(30)/13(30)/30(24)/

24-13(20)/

Hoodbury - ~~Party~~

East Organ left.

GAME Oklahoma - Kansas

DATE Jan 6 '42

Oklahoma 1st Half

32-14 / 16-14-24-14-16 / 14-24-16-24-30-24-30

14-16-24 / 30-14 / 14-24-32-24-14-24-16-24

30-16 / 24-32-30 / 30-16-24-16-30-16-14-30

16-24 / 14-16-24 / 24-14 / 14-30-16 / 14-30-14

30 / 30- / 16-32-16-32-22-14-16-14 / 16-14

30-16-22-16 / 16-14-16-14-22-14-22-14-30-22

32-22-14 / 14-30-14-22-14-16 / 30-22-14

22-30-22-14-22-30 / 30-14-30-16 / 16-14-30-16

14 / 30-14-30-16-14-16 / 24-14-24-30-24-30-32-14

30-32-14-32-30-14 // 30-24-19-30-24-19-24-14

24-32 / 19-24-30-24-14-32 / 32-19-24-19 /

19 / 24-14-19-14-32-24 / 24-30-24-14-24-30

14-30-32-24 / 14-30-24-14 / 30-16-24-14-30-24

32-16-24 / 16-24-30-24-30-24-30 / 30-16-24

30-24-30-24-14 / 16-24-16-24-14 / 30-14-30-14

30-32-24 / 14-24-14-30-24-16-24-32-30-24-32 / 32-24 /

16 / 24-14 / 14-24-14-32-24 / 16-24-30-32 / 32-14-32-14

30-14-24-32-14-24-30 /

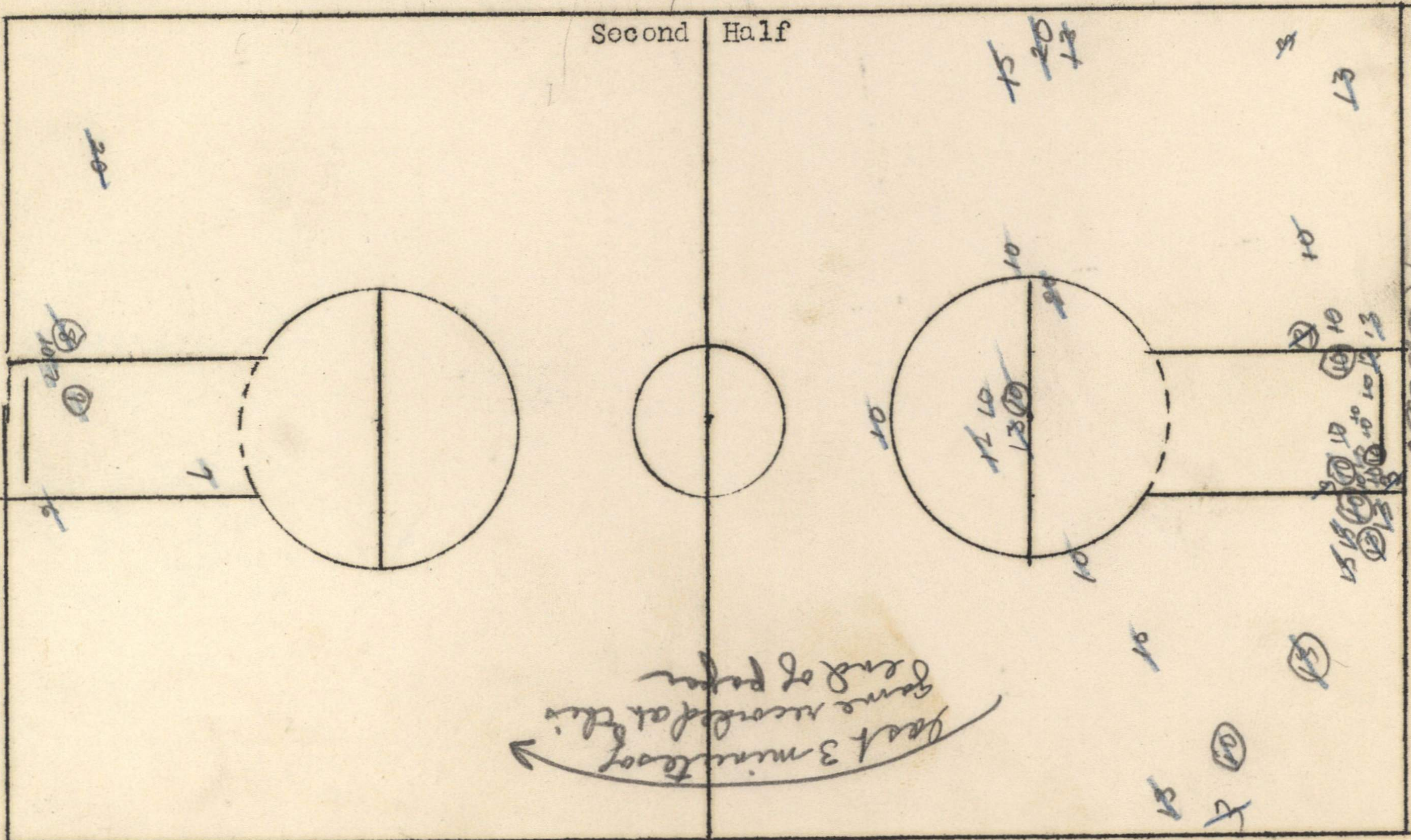
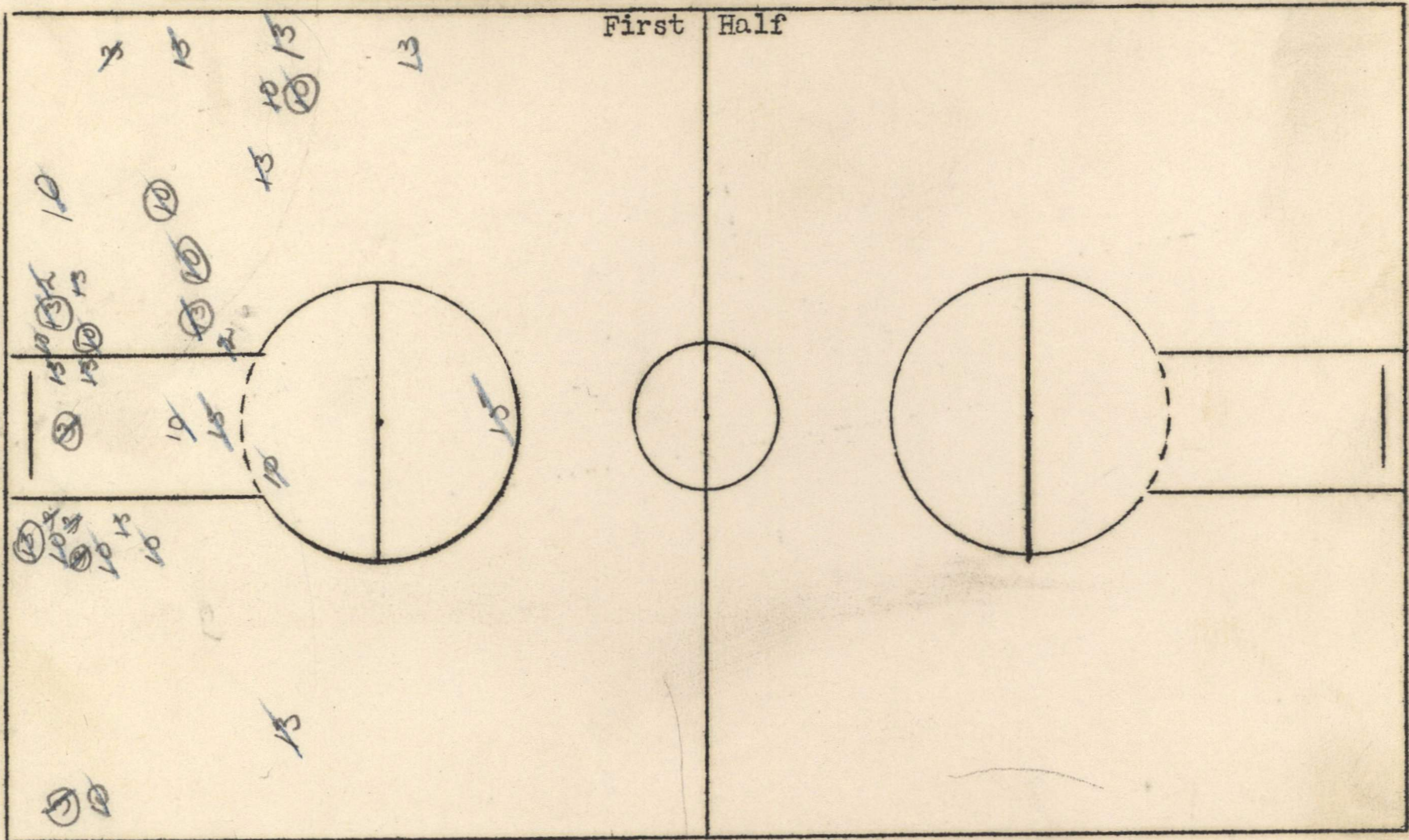
Gillispie - P.A. Booth

SHOT CHART

Date Jan 6, '42

Kansas vs Oklahoma

Team Kansas



Best 3 minutes of
game recorded at this
end of paper

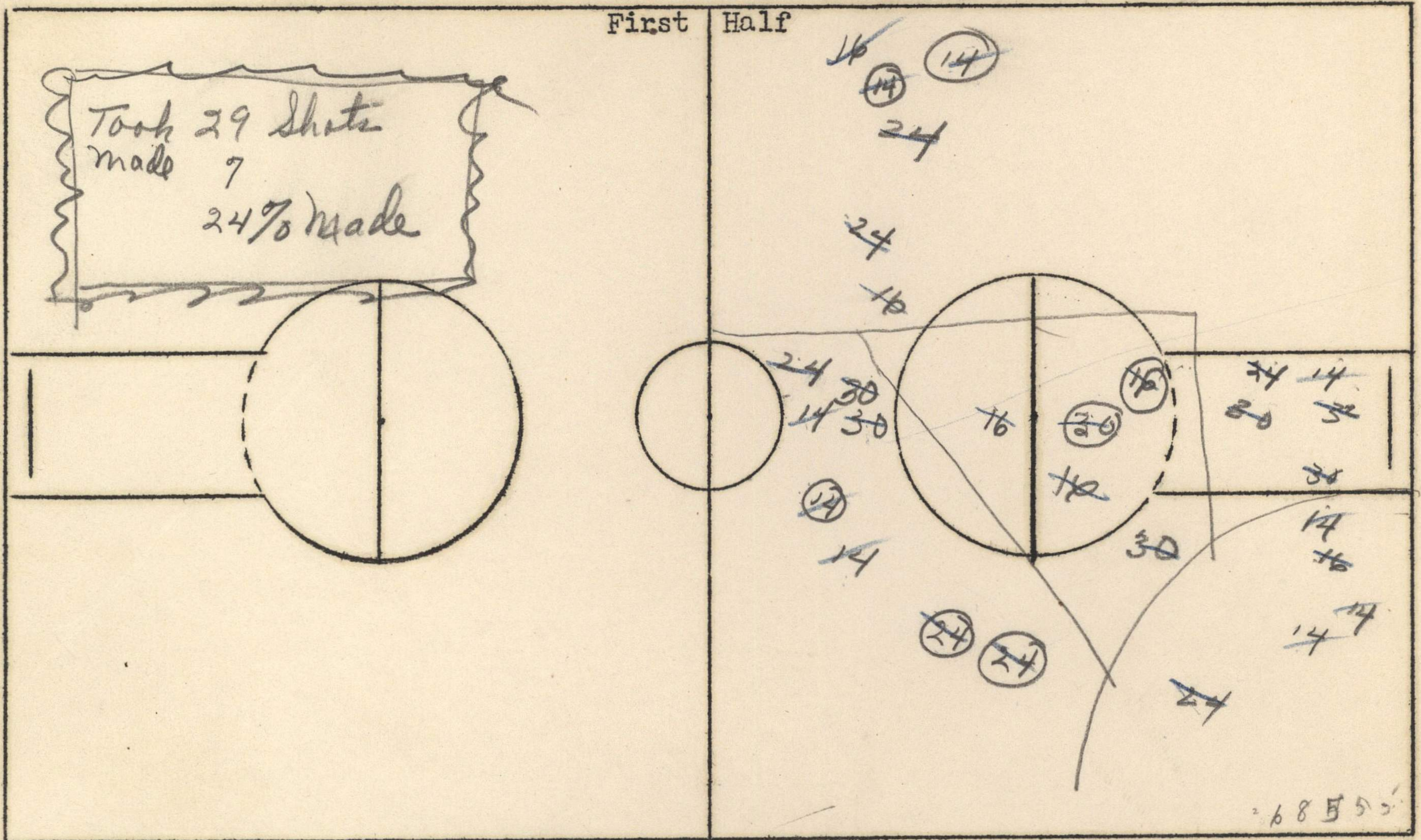
Everley - Press table

SHOT CHART

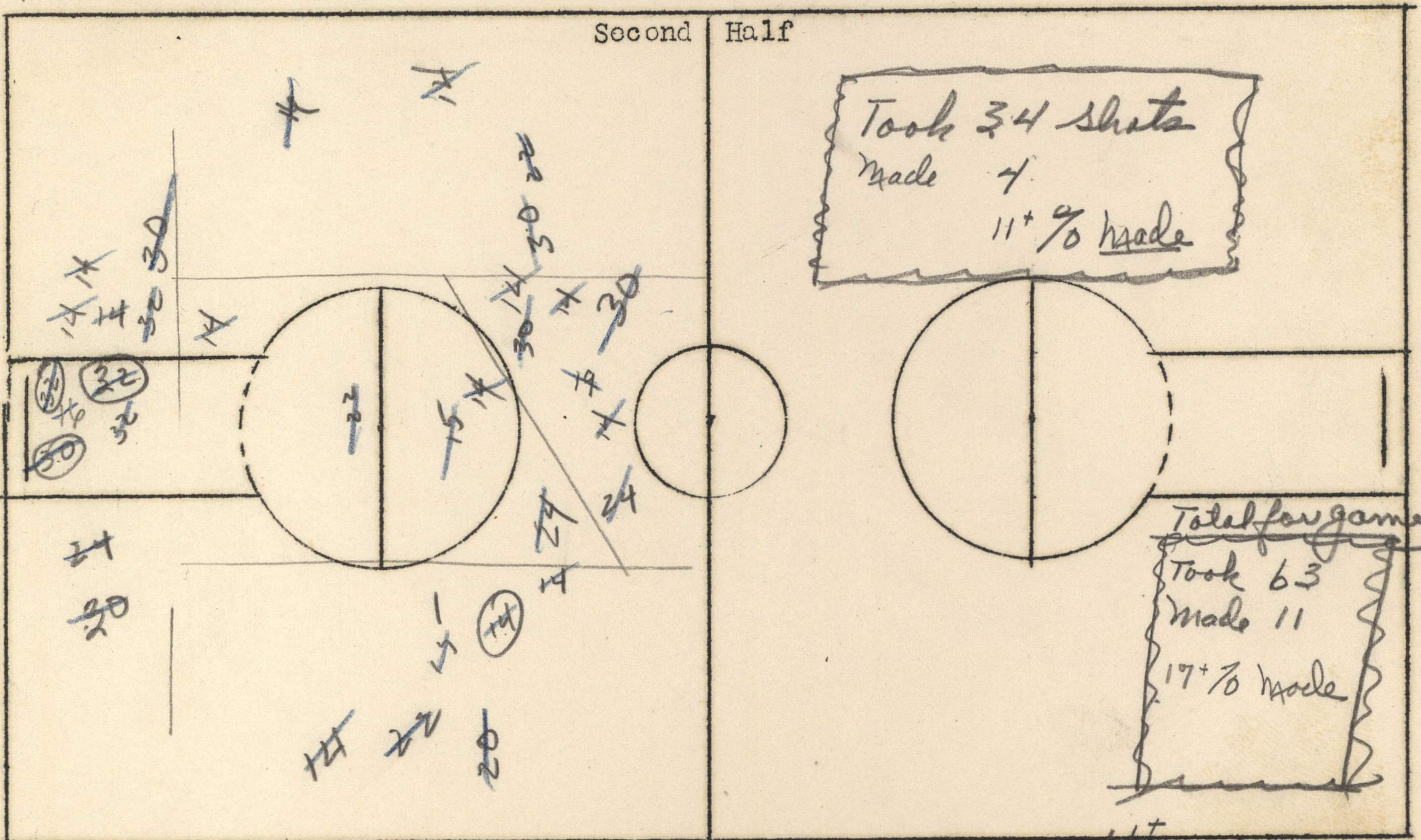
Date Jan 6, 1942

Kansas vs Oklahoma

Team Oklahoma



2507 34



.17
63 | 11.00
63
470
441

.117
34 | 4.00
34
60

24
11
235
11