

Phillips (West Organ Loft)

GAME OKLAHOMA A & M

DATE March 11, 1941

1. Recovery of ball off own backboard 29-27-15-8-8-29-
2. Recovers ball off opponents backboard 27-27-23-8-4-9-4/23-23-23-25-
25-25-29-8-5-
3. Fouling opponent with ball 23-8-23-23-9/5-9
4. Fouling opponent without ball 8-9-25-9/29
5. Violation 23-27-23/9-5-23-
6. Offensive personal fouls _____
7. Blocking opponents shot 27-23-
8. Intercepting opponent's dribble/ _____
9. Intercepting opponent's pass 8-27-1
10. Recovers Jump ball 27-23-29-23-5-5-25-/23-8-27-5-27-8-

Wild Passes

BASKETBALL

MARCH 11, 1941

KANSAS

VS

OKLAHOMA A.&M.



PROBABLE STARTING LINEUPS

KANSAS

OKLAHOMA A.&M.

3 ENGLEMAN, f				✓ 27 SMELSER, f			
4 BUESCHER, f				✓ 23 FLOYD, f			
9 ALLEN, c				✓ 29 SCHWERTFEGER, c			
16 KLINE, g				9 PATE, g			
5 HUNTER, g				✓ 8 MILLIKAN, g			

Officials—Carl Larson, Missouri, and Ab Curtis, Texas.

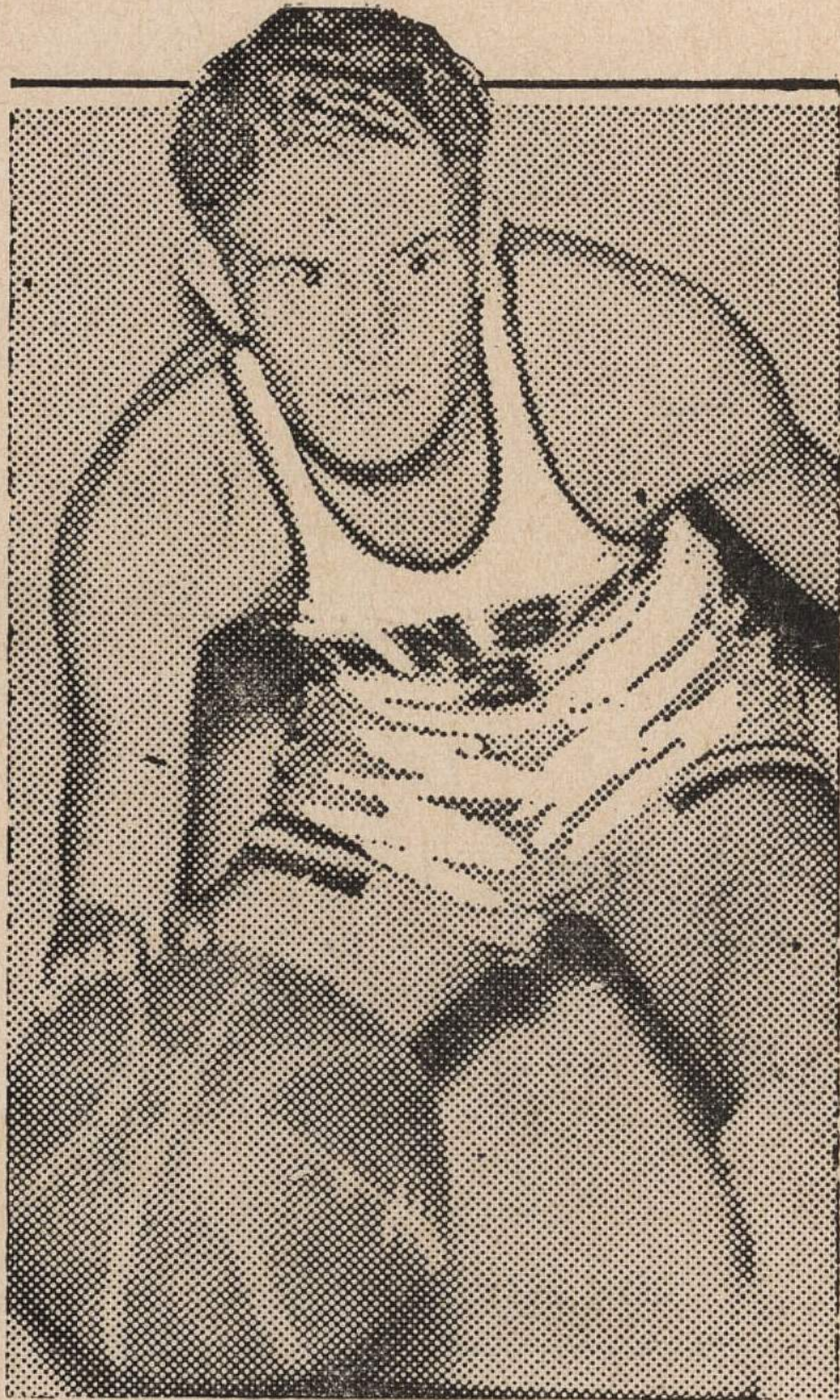
KANSAS SQUAD

3 ENGLEMAN, f	10 BUESCHER, f	16 KLINE, g
4 SANNEMAN, f	11 MILLER, f	17 MATHEWS, g
5 HUNTER, f	12 V. HALL, f	18 E. HALL, g
7 ARNOLD, g	14 WISE, c	20 HOGBEN, f
8 WALKER, f	15 SOLL'BERGER, g	21 BLAIR, g
9 ALLEN, c		

OKLAHOMA A.&M. SQUAD

3 SCHEFFEL, f	7 MADDOX, g	23 FLOYD, f
4 FRANCIS, c - 372	8 MILLIKAN, g	✓ 25 NEWMAN, f
✓ 5 EGGLESTON, f	9 PATE, g - 372	27 SMELSER, f
6 TAYLOR, g	20 BELL, c	29 SCHWERTFEGER, c

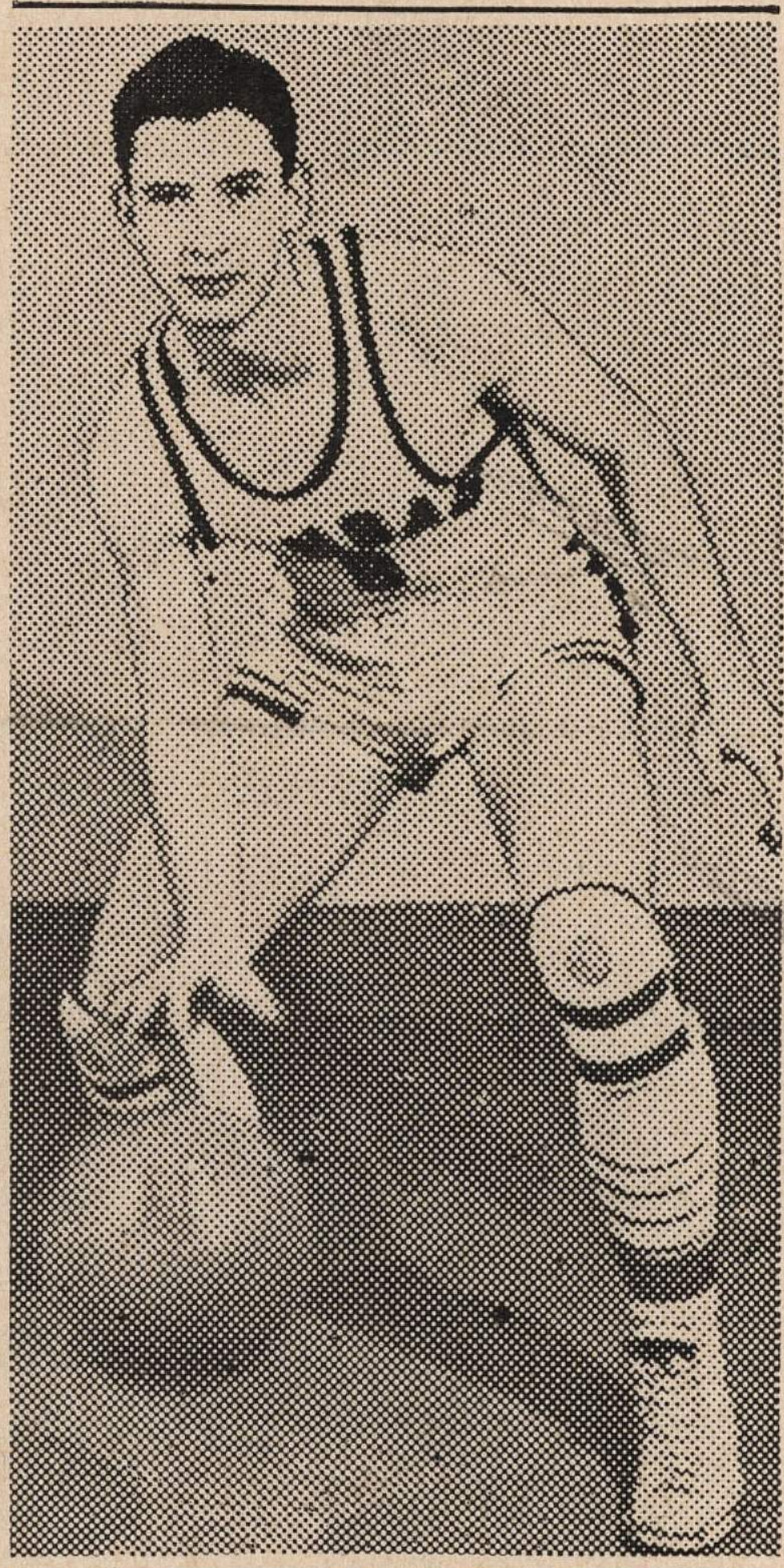
*Their
Last
..Game..*



HOWARD ENGLEMAN



JOHN KLINE



BOB ALLEN

BASKETBALL

DEC. 9, 1940

KANSAS

VS

TEXAS

PROBABLE STARTING LINEUPS



KANSAS

TEXAS

3 ENGLEMAN, f				27 COOLEY, f			
20 HOGBEN, f				24 GRANVILLE, f			
9 ALLEN, c				26 HOUPT, c			
16 KLINE, g				25 HULL, g			
15 SOLLENBERGER or 2 JOHNSON, g				22 MOORE, g			

Officials—Don Elser, Notre Dame, and Earl Jones, Arkansas.

KANSAS SQUAD

2 JOHNSON, g
3 ENGLEMAN, f
4 SANNERMAN, g
5 HUNTER, f
6 MITCHENER, f
7 ARNOLD, f
8 WALKER, f

9 ALLEN, c
10 BUESCHER, f
11 MILLER, f
12 HALL, f
13 GRAY, g
14 WISE, c
15 SOLLENBERGER, g

16 KLINE, g
17 MATHEWS, g
18 MOSER, f
19 NIPPER, c
20 HOGBEN, f
21 BLAIR, g
23 HALLBERG, f

TEXAS SQUAD

22 MOORE, g
23 POPHAM, g
24 GRANVILLE, f
25 HULL, g
26 HOUPT, c

27 COOLEY, f
28 KING, f
29 CROUCHER, g
30 SHYTLES, f
31 HINDS, g

33 BRAHANEY, g
34 HAILEY, f
35 PRICE, g
36 DILLON, f

Kansas front row



JOHN KLINE



DR. F. C. ALLEN

KANSAS SCHEDULE

TUESDAY, Dec. 10—KANSAS VS. TEXAS AT LAWRENCE.

Saturday, Dec. 28—Kansas vs. Fordham at New York City.

Monday, Dec. 30—Kansas vs. Temple at Philadelphia.

Thursday, Jan. 2—Kansas vs. Loyola at Chicago.

Wednesday, Jan. 8—Kansas vs. Oklahoma at Norman.

MONDAY, JAN. 13—KANSAS VS. IOWA STATE at LAWRENCE.

THURSDAY, JAN. 16—KANSAS VS. MISSOURI AT LAWRENCE.

Monday, Jan. 20—Kansas vs. Kansas State at Manhattan.

Tuesday, Feb. 4—Kansas vs. Wichita at Wichita.

MONDAY, FEB. 10—KANSAS VS. NEBRASKA AT LAWRENCE.

Monday, Feb. 17—Kansas vs. Oklahoma A.&M. at Stillwater.

Friday, Feb. 21—Kansas vs. Missouri at Columbia.

TUESDAY, FEB. 25—KANSAS VS. KANSAS STATE AT LAWRENCE.

Saturday, March 1—Kansas vs. Nebraska at Lincoln.

Monday, March 3—Kansas vs. Iowa State at Ames.

FRIDAY, MARCH 7—KANSAS VS. OKLAHOMA AT LAWRENCE.

TUESDAY, MARCH 11—KANSAS VS. OKLAHOMA A.&M. AT LAWRENCE.

BASKETBALL

FEB. 25, 1941

KANSAS

VS

KANSAS STATE

PROBABLE STARTING LINEUPS



KANSAS

KANSAS STATE

3 ENGLEMAN, f				35 GUY, f			
<i>5 Hunter</i> 10 BUESCHER, f				30 HOWE, f			
9 ALLEN, c				28 LANGVARDT, c			
15 SOLL'BERGER, g				26 HOLSTROM, g			
16 KLINE, g				36 BEAUMONT, g			

Officials—Ted O'Sullivan, Missouri, and Darrel Hinkhouse, Ft. Hays State.

KANSAS SQUAD

3 ENGLEMAN, f
4 SANNEMAN, f
5 HUNTER, f
7 ARNOLD, g
8 WALKER, f
9 ALLEN, c

10 BUESCHER, f
11 MILLER, f
12 V. HALL, f
14 WISE, c
15 SOLL'BERGER, g

16 KLINE, g
17 MATHEWS, g
18 E. HALL, g
20 HOGBEN, f
21 BLAIR, g

KANSAS STATE SQUAD

20 MILLER, g
22 HORACEK, f
23 MENDENHALL, g
24 LILL, c

26 HOLSTROM, g
28 LANDVARDT, c
29 GRAHAM, g
30 HOWE, f

34 HORNSBY, f
35 GUY, f
36 BEAUMONT, g

SONGS



America

My country, 'tis of thee
Sweet land of liberty,
Of thee I sing.
Land where my fathers died!
Land of the Pilgrims' pride!
From every mountain side,
Let Freedom ring.
Our fathers' God, to Thee,
Author of liberty,
To Thee we sing.
Long may our land be bright
With freedom's holy light;
Protect us by Thy might
Great God, our King.

Onward Kansas

Westward to the high Sierras,
Eastward to the hills of Maine,
There's a name we hold so dear,
There's a name we love to cheer,
From our rocky hill-top on the western
In the silver stars of morning, — [plain.
In the set of golden sun,
Will her altars claim an undying fame
Set ablaze by glories won.
Alma Mater, we pledge our loyalty,
Every daughter, every son.
Name ever glorious!
Ever victorious!
Then onward spirit of Kansas
We march with you.
Then onward spirit of Kansas
With the red and blue above us
Mother of freedom and honor
From years gone by into years to be,
We raise your torch
And march march march to victory.
(Second ending)
March ever on to victory.

Kansas Song

We're from Kansas, good old Kansas
Where the great big sunflowers grow—
Oh the girls are pretty, and when you
[see their smiles
You know the reason why we'd walk a
[thousand miles,
Back to Kansas, good old Kansas,
Where the skies are blue—
There's lots of good old friends we can't
[forget,
Kansas we're strong for you.

America, The Beautiful

O beautiful for spacious skies,
For amber waves of grain,
For purple mountain majesties
Above a fruited plain.
America! America!
God shed his grace on Thee,
And crown thy good with brotherhood
From sea to shining sea.
O beautiful for patriot dream
That sees beyond the years
Thine alabaster cities gleam
Undimmed by human tears.
America! America!
God shed his grace on thee,
And crown thy good with brotherhood
From sea to shining sea.

God Bless America

God bless America,
Land that I love,
Stand beside her and guide her
Through the night with a light from above;
From the mountains, to the prairies,
To the oceans white with foam,
God bless America
My home sweet home.

KANSAS SCHEDULE

Saturday, March 1—Kansas vs. Nebraska at Lincoln.

Monday, March 3—Kansas vs. Iowa State at Ames.

FRIDAY, MARCH 7—KANSAS VS. OKLAHOMA AT LAWRENCE.

TUESDAY, MARCH 11—KANSAS VS. OKLAHOMA A.&M. AT LAWRENCE.

BASKETBALL

MARCH 7, 1941

KANSAS

VS

OKLAHOMA

PROBABLE STARTING LINEUPS



Don

KANSAS

OKLAHOMA

3 ENGLEMAN, f				20 CORBIN, f			
<i>Walker</i> 12 V. HALL, f				14 ROBERTS, f			
9 ALLEN, c				<i>Jord</i> 13 BENTLEY, c			
16 KLINE, g				17 PAINE, g			
<i>Buescher</i> 5 HUNTER, g				15 RICHARDS, g			

Officials—Ted O'Sullivan, Kansas City, and Eddie Hogue, Kansas City.

KANSAS SQUAD

3 ENGLEMAN, f
 4 SANNEMAN, f
 5 HUNTER, f
 7 ARNOLD, g
 8 WALKER, f
 9 ALLEN, c

10 BUESCHER, f
 11 MILLER, f
 12 V. HALL, f
 14 WISE, c
 15 SOLL'BERGER, g

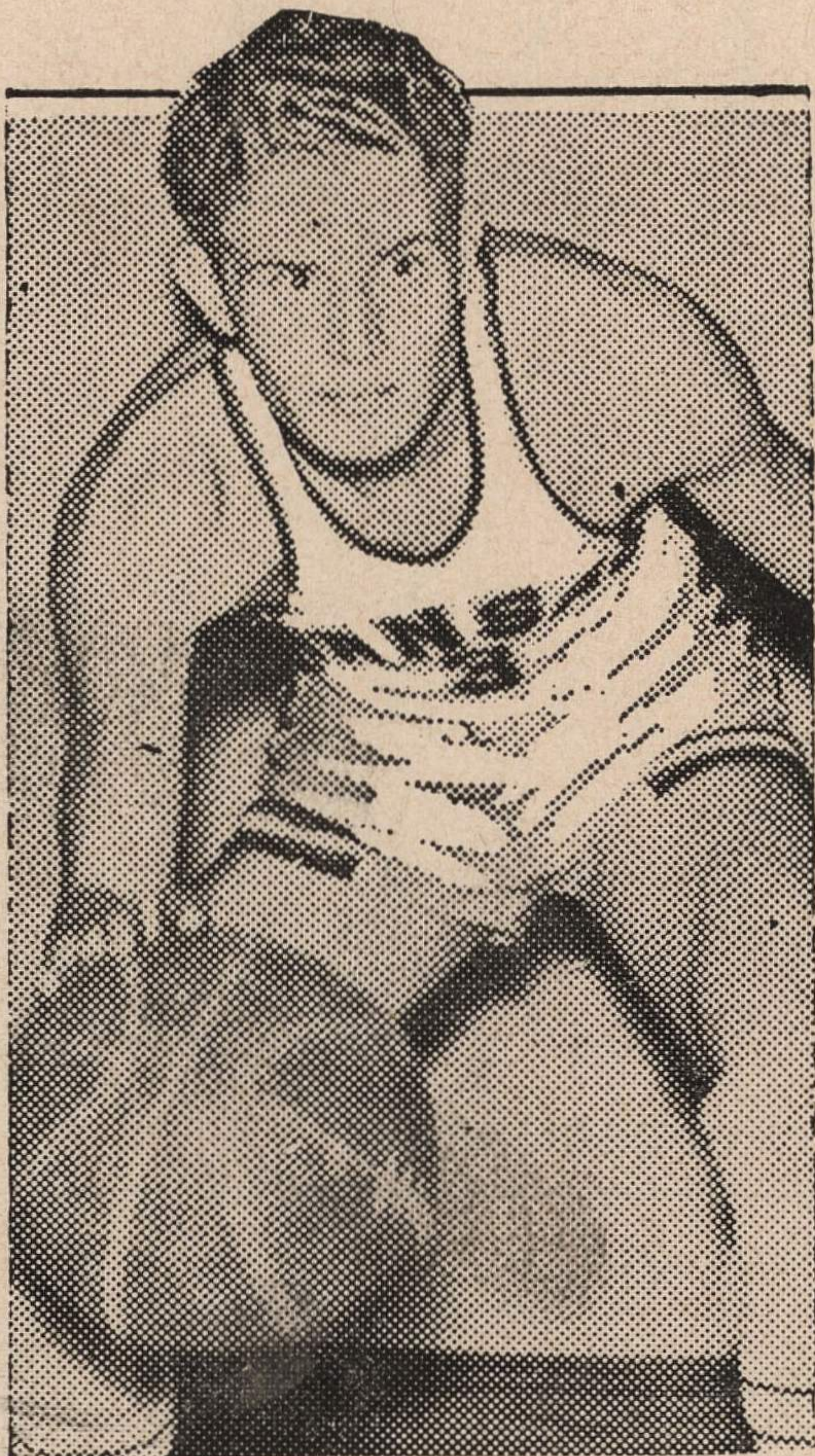
16 KLINE, g
 17 MATHEWS, g
 18 E. HALL, g
 20 HOGBEN, f
 21 BLAIR, g

OKLAHOMA SQUAD

11 LEHMAN, g
 12 GREEN, f
 13 BENTLEY, c
 14 ROBERTS, f

15 RICHARDS, g
 16 ROUSEY, g
 17 PAINE, g
 19 FORD, c

20 CORBIN, f
 22 ZOLLNER, f-g
 23 MARTENEY, g
 24 SIMONS, f



HOWARD ENGLEMAN



DR. F. C. ALLEN

KANSAS' SEASON RECORD

Big Six Games

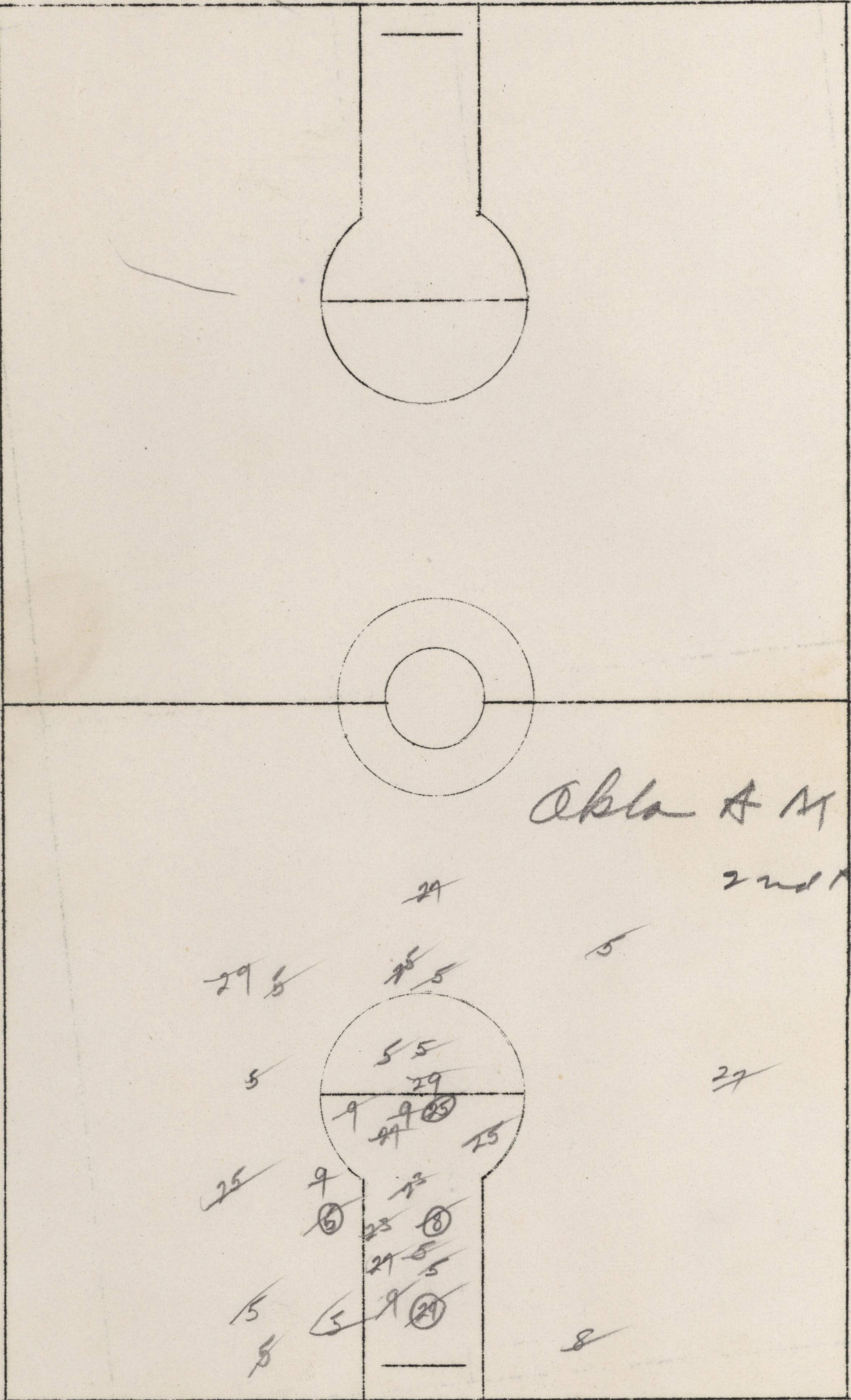
Kansas	31	Oklahoma	42
Kansas	44	Iowa State	41
Kansas	48	Missouri	41
Kansas	46	Kansas State	41
Kansas	44	Nebraska	38
Kansas	35	Missouri	24
Kansas	50	Kansas State	45
Kansas	55	Nebraska	53
Kansas	29	Iowa State	41

Non-Conference Games

Kansas	35	Texas	27
Kansas	48	Texas	45
Kansas	42	Fordham	53
Kansas	35	Temple	40
Kansas	41	Loyola	40
Kansas	54	Wichita	39
Kansas	26	Okla. A.&M.	30

LAST HOME GAME

TUESDAY, MARCH 11—KANSAS VS. OKLAHOMA A.&M. AT LAWRENCE.



Okla A M

2nd Half.

~~24~~

~~29~~ 5

~~25~~ 5

~~5~~

~~5~~

~~5 5~~

~~29~~

~~9~~

~~9~~

~~25~~

~~24~~

~~25~~

~~27~~

~~25~~

~~9~~

~~5~~

~~23~~

~~8~~

~~21~~

~~5~~

~~5~~

~~5~~

~~9~~

~~29~~

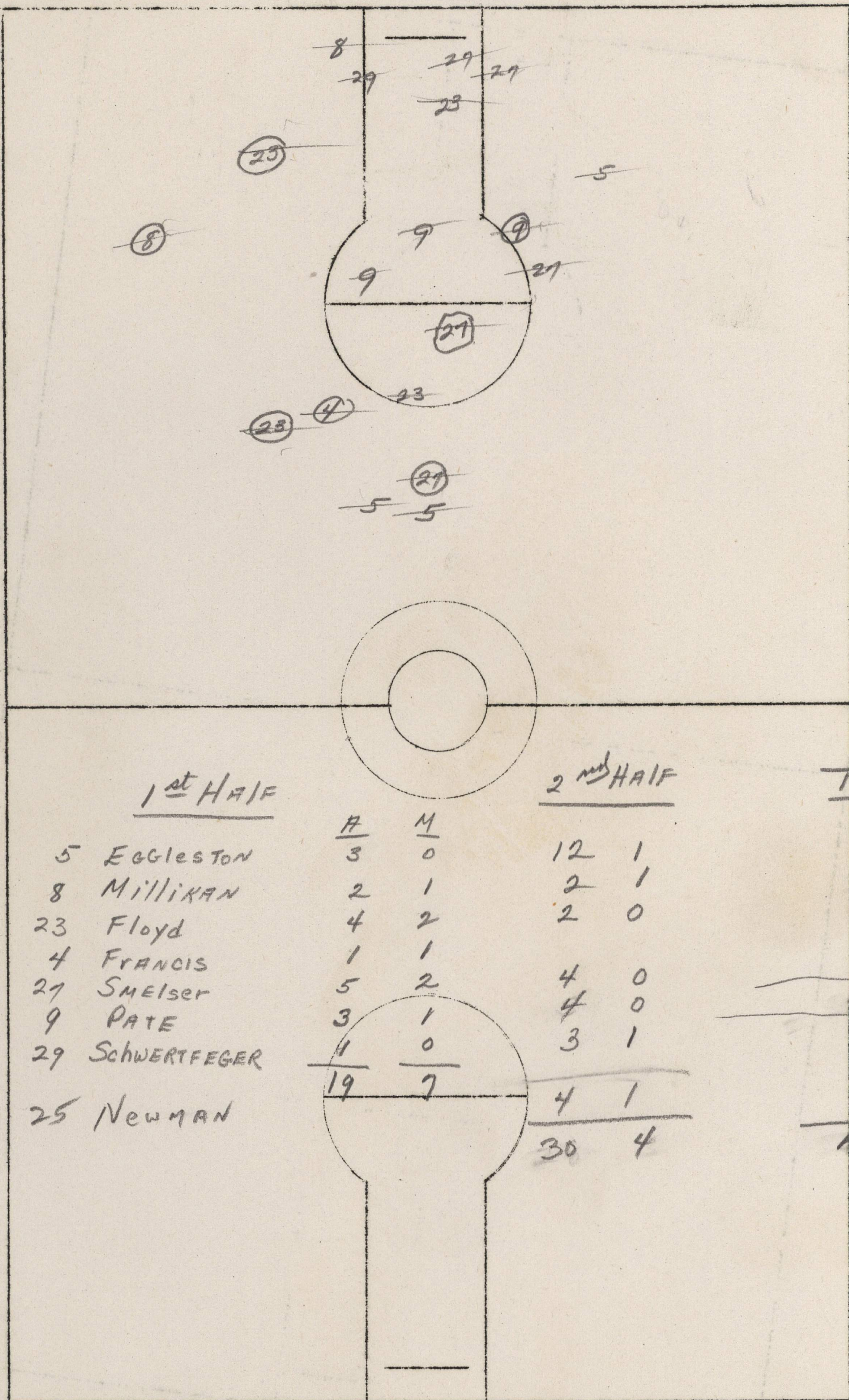
~~5~~

~~8~~

Long (West Organ Loft)

OKLAHOMA
A&M

- 3 SCHEFFEL
- 4 FRANCIS
- 5 EGGLESTON
- 6 TAYLOR
- 7 MADDOX
- 8 MILLIKAN
- 9 PATE
- 20 BELL
- 23 FLOYD
- 25 NEWMAN
- 27 SWEISER
- 29 SCHWERTFEGER



	<u>1st HALF</u>		<u>2nd HALF</u>		<u>TOTAL</u>	
	<u>A</u>	<u>M</u>				
5 EGGLESTON	3	0	12	1	15	1
8 MILLIKAN	2	1	2	1	4	2
23 FLOYD	4	2	2	0	6	2
4 FRANCIS	1	1			1	1
27 SWEISER	5	2	4	0	9	2
9 PATE	3	1	4	0	6	1
29 SCHWERTFEGER	1	0	3	1	4	1
25 NEWMAN	19	7	4	1	4	1
			30	4	49	11

GAME OKLAHOMA A & M -- Kansas

DATE March 11, 1941

1st Half

9-23-29-27-23-8-27-23-29-8

27-8-23-29-23-9-8-27-23-9-8-27-29-27

9-29-23-27-8-9-8-27-27-8-23-27-23-9

23-9-8-27-8-23-27-8-27-29-27-9-8-27

23-27-9-27-9-29-9-27-23-23-8-27-23

9-23-27-8-29-8-9-8-23-27-9-27-23-8-9

8-23-8-29-23-8-9-23-27-9-29-8-23

27-29-9-23-29-23-8-9-8-23-29-27-27-9-27

9-27-23-23-8-29-9-23-29-8-27-9-23

8-9-23-9-27-8-27-23-9-8-27-23-27-8-9

8-9-23-9-29-9-27-8-9-8-27-23-9-8-29-9-8-27-23-

29-8-23-8-29-8-23-27-29-8-23-5-27-8

23-27-5-8-23-27-27-23-4-23-27

4-8-5-27-4-27-8-23-8-4-8-5-5-8-27

8-23-27-4-8-23-27-27-5-27-5-27-8-9-

25-8-5-25-9-5-8-8-9-25-4-5-8-25-

5-9-25-9-5-25-8-9-25-8-4-25-9-4

8-25-4-5-4-8

FT-
11111

GAME Okla. A.M. v Kansas

DATE 3-11-41

2nd Half

23-5-27-(27) (5) / 23-27-29-23-8-23-27-23-
8-5-27-29-8-27 (29) 8-29-5-23-8-23
8-23-27-8-(27) / 23-27-29-27-8-(5) / 8-(5) /
29-23-8-27-29 / 23-8-27-(8) / 8-23-27-29-23-
8-27-(5) 8-23-8-23-8-5-27-29-5-27-23
(5) / 8-23-27-29-23-27-8-5-8-23-5-27-8
(29) (5) / 8-23-27-23-29-8-5-29-27-(5) / 8
23-27 / 25-5-29-23-5-23-5-25-8-29-5-(25)
29 / 25-(5) / 23-27-29-8-27-(23) 29-27-23-29
8-27-25-8-27-(8) / 27, 25-23-27-25-8-29-(27) /
8-27-29-8-9-(9) / (27) / 9-27-29-8-25-29-9-(25)-8-
27-29-27-25-(9) / 9-27-25-5-8-(25) / 25-27-
9-5-27-(9) / 9-27-25-9 / 8-9-27-(5) (9) /
5-8-(5) / 5-27-25-5-9-8-9-(25) / 27-8-9-(27) /
29 / 8-23-27-5-8-29-5-23-8-27-5-29-8-23-
5-27-23-8-23-27-5 / 8-(5) / (29) / 8-27-23-
5-23-5-23 / 27-23-27-29-23-8-5 / 8-27-(5) /

Collinson-Poole (East Organ Loft)

GAME KANSAS* - Oklahoma A & M

DATE March 11, 1941

NSI
E1
B11
YH111

3/11-9-3-4-3-5-9-3-5-16-9-5-4-3/1
 9-3-5-9-4/11-3-4-5-9-3-4-5-3-16-4
 13-16-5-9-3/16-4-4-5-3-9/10-3-4-3-9
 16-4-3-9-3-9/13-4/9-3-9-4-9/8-9-3
 16/16-9-3-9/10/3-8-16-10-10/16/9-16-9
 10/10-9-9/16-3-9-9/16-3/12-9/9-23
 16-9-3-16-9-16-9/12-9-3-9/12/23-
 16-9-3-23-9-3X/12-16-3X/9-12-3-
 12/9-9/9-3-9-3-9X/3-16-3-9-12-9-
 23-9-3/9-23-16-9-12/16-23-9-16-9-
 12/9-23-16-9-12-9-23-9-16-9-16-23
 12-23-16-9-23/9-9/16-10/9-10-23/
 23-16-3-9-16-9X/9-3-23-9-10-9-3/
 23-9-16-9-10-23-9-3-9-3/3-16-23-
 3-23/

JK
E
A1

GAME _____

DATE _____

16-9-23-9-3-9 | 3-9-10-9-10-9-10-4-3
16-9-5-10-3 | 9-3 | 3-9 | 3-9-3 | 10-3-23
9-3 | 3-9-16-3 | 23-3-16-4-10-3 | 10-3 |
3-9-3 | 3-9-3-9-16-9-12-9-16-9-12 |
16-4-23-4-3-23-16-9-23-9-12-9-16
-9-23-9-12-9-3-3 | 16-23-9-16-9-3
12 | 16-23-9-3 | 9-3-4 | 16-23-9-16-9
3-9 | 9-16-9-16-9-10-12-3-9 | 16-9-8-9-12
-9-12-9-16-9-16-4-8-12-9-16-9-10
12-9 | 9-3 | 16-9-8-9-3-9 | 12-8-9-
16-9-3-9-16-9-12-9-12-9-12-16-9-
3-9-8 | 23-9-3 | 3-23-3 | 16-9-16-9-
3-9 | 16-23-9-3 | 23-16-9-16-9-3 |
9-16-9-23-9-16 | 16-3-12-3-23-3-9
9 |

Barringer (West Organ Loft)

GAME KANSAS

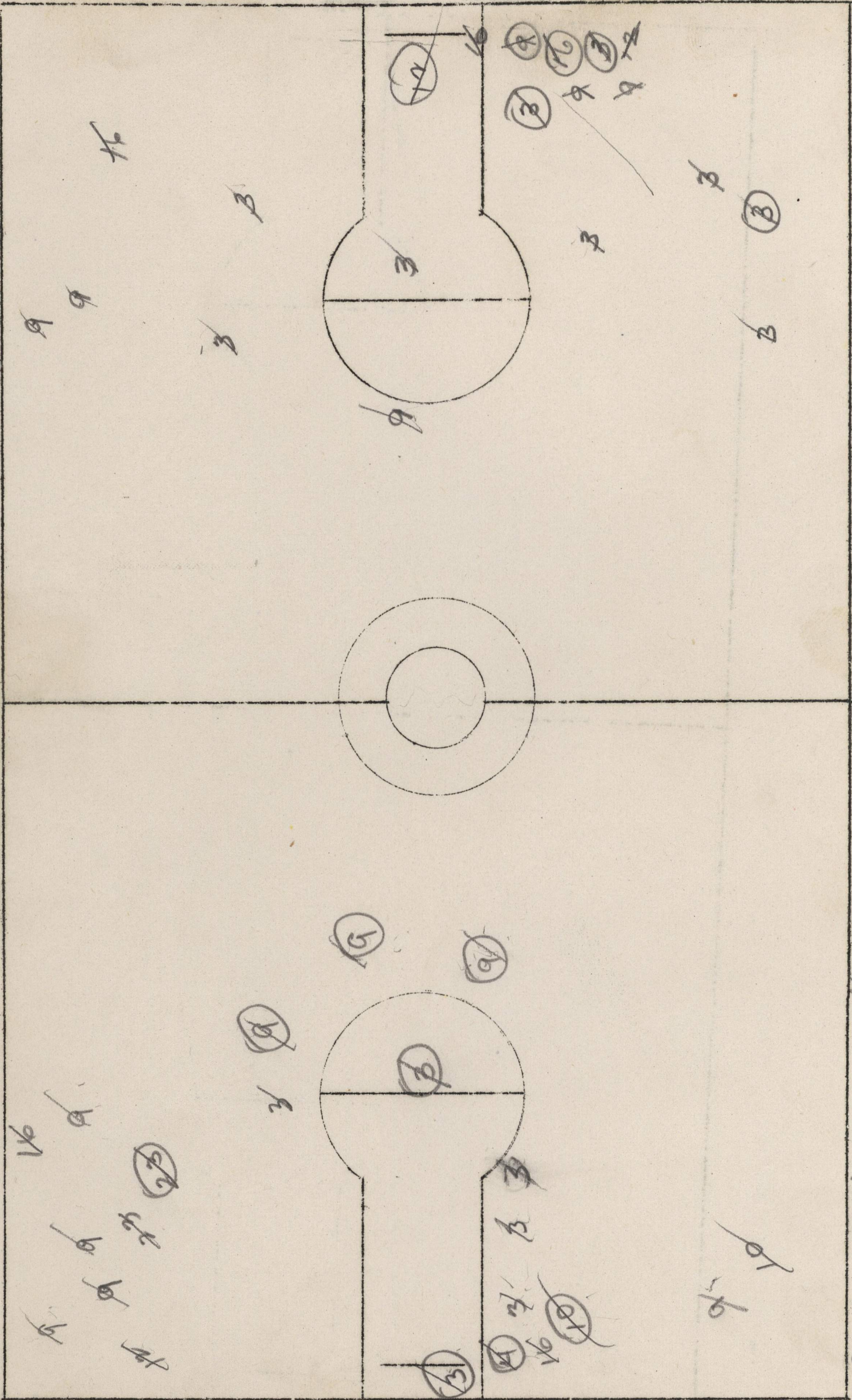
DATE March 11, 1941

1. Recovery of ball off own backboard 4-9-10-12-12-10 | 3-16-16-9
2. Recovers ball off opponent's backboard 16-9-8-3-16-9-12-3-3 | 3-3-3
10-23-16-12-16
3. Fouling opponent with ball 10-3-9-23 | 16-3-10-23
4. Fouling opponent without ball 12-9 | 3
5. Violation 10 | 3
6. Offensive personal fouls 9 |
7. Blocking opponent's shot 5-16 | 16
8. Intercepting opponents dribble
9. Intercepting opponent's pass 3-12 | 3-3
10. Recovers jump ball 9-16 | 3-9

KANSAS

mid
5-19

151
8-22



3-9
1-1

3 Engleman !!
4 Schumann !!
9 Allen !!
14/15
5 Hunter

+++ Polken
Buescher
+++ Hol
V. Hall III

++
x

22 / 80 132
66
36.3
170

TEAM			TIME OUTS			
Player	No.	Pos.	1st HALF		2nd HALF	
			Goals	Fouls	Goals	Fouls
✓ Engleman	3		(X)(X)(1)	P	(X)(X)(X)	PP
Sonnenman			(1)(X)			
✓ Allen	9		(1)(X)(X)(1)(1)	PPP	X 1	
✓ Klene					X	P
Hunter						
Walker						
✓ Buescher			(X)	P		P
✓ Hall, E			(X)	P		
Hally, J			(2)(1)	P		

~~9~~ 11
 3
~~10~~ 11
 2

 2
 2
 2

OPPONENT _____ OPPONENT'S SCORE _____

RUNNING	1 2 3 4 5 6 7 8 9 10 11 12 13 14 15 16 17 18 19 20 21 22 23 24 25
	26 27 28 29 30 31 32 33 34 35 36 37 38 39 40 41 42 43 44 45 46 47
SCORE	48 49 50 51 52 53 54 55 56 57 58 59 60 61 62 63 64 65 66 67 68 69
	1 2 3 4 5 6 7 8 9 10 11 12 13 14 15 16 17 18 19 20 21 22 23 24 25
	26 27 28 29 30 31 32 33 34 35 36 37 38 39 40 41 42 43 44 45 46 47
	48 49 50 51 52 53 54 55 56 57 58 59 60 61 62 63 64 65 66 67 68 69

TEAM			TIME OUTS			
✓ Smelser	27		(X)(X)(1)(1)		(2)	
✓ Floyd	23		(X)(X)	PPP		
✓ Schwertfeger	29		(1)		X	P
Pate	9		(X)	PPP		P
✓ Millikan	8		(X)	PP	(X)(1)	P
✓ Eggleston	5		(1)(1)		X	P
Francis	4		X			
Newman	25			P	(1)(X)	

8
 4
 3
 2
 5
~~4~~
 2
 3

OPPONENT _____ OPPONENT'S SCORE _____

REFEREE _____
 Goals X - Free Throws Made (X) - Free Throws Missed (O)
 Personal Fouls P₁ P₂ Technical Fouls - T