

December 19, 1940

Major John L. Griffith
Commissioner of Athletics
Hotel Sherman
Chicago, Illinois

Dear Major Griffith:

On November 30 I had a young and inexperienced stenographer working for me. She took a letter to you along with several others and I hastily signed the same without reading them. A week or so ago I had occasion to refer to that letter and I found so many errors in it that I have made a correction.

In the third paragraph I called Harold Olsen, "John", and I believe there were many other errors. It seems to me there were 16 in the letter altogether. I am sorry I did not read it before I sent it on to you, but I am enclosing a corrected copy herewith together with my apology.

The letter is not important now, but I desired you to know how the mistakes came about.

Will you please destroy the copy in your files and substitute the letter enclosed? I believe this one makes more sense.

Sincerely yours,

Director of Physical Education and Recreation
Varsity Basketball Coach

FCA:lg
Enc.

cc: Harold Olsen

December 19, 1940

Mr. Harold G. Olsen
Ohio State University
Columbus, Ohio

Dear Ole:

My letter to Major Griffith is self-explanatory.

My regular secretary had gone for Thanksgiving vacation and I had a substitute, and being in a hurry to get the mail out I signed the letters without reading them.

The enclosed letter will make sense, I hope.

Sincerely yours,

Director of Physical Education and Recreation
Varsity Basketball Coach

FCA:lg

December 21, 1940

Mr. Don Davis
Managing Director
WHB Broadcasting Station
Kansas City, Missouri

Dear Don:

The contract has been signed with the Auditorium for our Western Playoffs of the National Collegiate Athletic Association for the dates of March 21 and 22. That means that the winners of the Fifth District, which include Kansas, Missouri, Oklahoma, Nebraska, Iowa, the Dakotas and part of Colorado; the Sixth District, the Southwest Conference; the Seventh District, the Rocky Mountain Conference; and the Eighth District, the Pacific Coast Conference, will meet for the Western Playoff.

The four collegiate districts of the east will meet either in Philadelphia or Indianapolis and will decide their eastern championships. Then the National Championship winners of the Eastern and the winners of the Western will be played in Kansas City on March 29. This will be the same set-up as we had last year.

In addition to this, the National Basketball Rules Committee of the United States and Canada will meet in Kansas City on March 30 and 31. This will immediately follow our National Championship. Of course, the Rules Members will be here to see the Playoff. This adds much prestige to the Championship, as last year was the only time that the National Basketball Rules Committee had met in Kansas City, and for them to follow it again this year makes it doubly important.

I remember your telling me that you would mail me a check. If you will refer to my letter as of July 20, 1940, you will see that I explain the whole situation to you. George Bowles merely did the soliciting for the advertising. We paid him for it but we failed to collect for some of the advertising which he solicited for us. We paid him 25% for soliciting.

Quoting from my letter of July 20: "Bowles explained to me that this \$75.00 ad was split three ways between the Emporia station, the Kansas City, Kansas station, and WHB, each assuming one-third of the financial responsibility." I am sure that you understand this. On the same day I sent you a bill reading as follows: "STATION W H B
Kansas City, Mo.

Advertising in N.C.A.A. Basketball
Tournament Program, March 22, 23,
and 30, 1940 - - - - - \$74.00"

That was for both Tournaments, Don, the Western and the National.

On April 3, 1940, you wrote me your congratulations on the success of the Tournament. You stated that we might not know it, but you tried at the last minute to get a coast-to-coast broadcast over Mutual, and would have been able to arrange it had you started earlier.

You suggested: "Therefore, put this item in your "tickler" for next year -- and when the dates for the tournament are set, let's see if we can't get a coast-to-coast broadcast." You state further that you have all the dope on the broadcasts and how they are handled from the Denver Tournament, and you would like to talk with me at my convenience.

I would be happy to confer with you any time that it is agreeable. The fact that we have members of the Rules Committee from the United States and Canada on our Joint Rules Committee, and the fact that they will be in Kansas City during the Tournament, we can get these fellows on the air.

Awaiting your reply and your kindness in submitting a check, I am,

Sincerely yours,

Director of Physical Education and Recreation
Varsity Basketball Coach

FCA:lg

October 25, 1940

Mr. Don Davis
Managing Director
WHB Broadcasting Station
Kansas City, Missouri

My dear Don:

On July 20, 1940, we billed your station, WHB,
for \$75.00 for advertising in the N.C.A.A. Basketball
Tournament Program, for March 22, 23 and 29, 1940.

I am wondering if you will not remit us this
amount so that we may close the matter up.

Sincerely yours,

Director of Physical Education and Recreation
Varsity Basketball Coach

FCA:lg

Lawrence, Kansas
July 20, 1940

Mr. Don Davis,
WHB Broadcasting Station,
Kansas City, Mo.

Dear Don:

I am sending you the bill of \$75.00 for the advertising of Station WHB in the N.C.A.A. Basketball Tournament program for the Western and National Finals in Kansas City on March 22, 23 and 30. We had an advertising company in Kansas City solicit the ads, George Bowles as their manager, but he had failed to send out the bills, which has caused this delay.

Bowles explained to me that this \$75.00 ad was split three ways between the Emporia station, the Kansas City Kansas station, and WHB, each assuming one-third of the financial responsibility. Bowles has been ill and I have had great difficulty in getting this entire information concerning the collections. I called your auditor a month ago, but you were out of town. I am very anxious to get this straightened up at an early date as this is a part of the N.C.A.A. set-up and before I can get my complete report to Harold G. Olsen, the chairman, it is necessary that I collect these outstanding bills. Bowles said that he had dealt with you and John Shilling.

My summer schedule of eight weeks here at the University together with the supervision of recreation has kept me closely employed and I could not get the complete settlement from Mr. Bowles before this time. I will appreciate it if you will o.k. the bill and send it to the proper parties with instructions to make the check payable to Forrest C. Allen, Managing Director of the N.C.A.A. Tournament.

Very sincerely yours,

FCA:AH

Managing Director, N.C.A.A. Basketball Tournament.

STATION W H B,
Kansas City, Mo.

Advertising in N.C.A.A. Basketball
Tournament Program, March 22, 23,
and 30, 1940 \$75.00

April 4, 1940.

Mr. Don Davis, President,
WHB Broadcasting Company,
9th and Grand,
Kansas City, Mo.

Dear Don:

Thank you for your fine letter of April 3rd.

Your idea of a coast-to-coast broadcast is a swell one, and we will put this on our agenda for next year. It would have been fine to have had it this year.

Confidentially, there is a possibility that next year we will have the eight teams meet in Kansas City for the semi-finals, instead of meeting east and west of the Mississippi River. And of course we will have the finals there. We are working on this now, and that is why we are holding up any announcements.

But we will definitely keep in mind the nation-wide broadcast for next year.

Very sincerely yours,

Director of Physical Education and Recreation,
Varsity Basketball Coach.

FCA:AH

DONALD DWIGHT DAVIS
President

JOHN T. SCHILLING
*Vice-President and
General Manager*

WHB BROADCASTING COMPANY

AFFILIATED STATION: MUTUAL BROADCASTING SYSTEM

Penthouse Studios and General Offices
ATOP THE SCARRITT BUILDING

9th and Grand: Phone Harrison 1161
KANSAS CITY, MISSOURI

April 3, 1940

Mr. F. C. Allen
University of Kansas
Lawrence, Kansas

Dear "Phog":

Congratulations on the success of the N.C.A.A. tournament
in Kansas City!

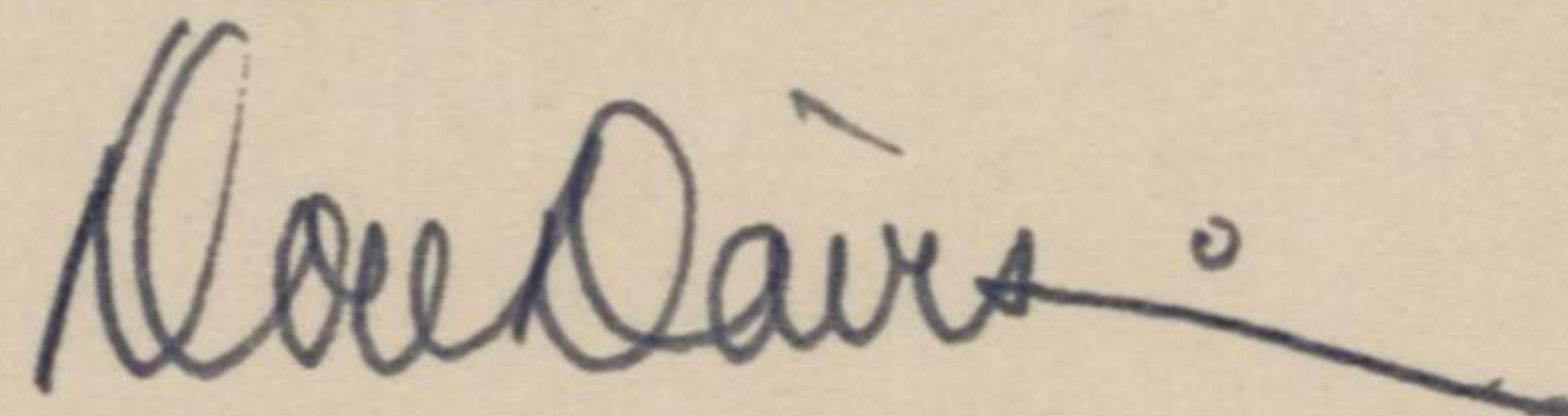
You may not know it -- but we tried at the last minute
to get a coast-to-coast broadcast of the final game over
Mutual -- and would have been able to arrange it had we
started earlier.

Therefore, put this item in your "tickler" for next
year -- and when the dates for the tournament are set, let's
see if we can't get a coast-to-coast broadcast.

I have all the dope on how the broadcasts are handled from
the Denver tournament and would like to talk to you about
them at your convenience.

Very truly yours,

WHB - KANSAS CITY



Don Davis, President

DDD:a

DEPARTMENT OF PUBLIC WELFARE
BUREAU OF GENERAL INFORMATION
BUREAU OF SCHOOL SERVICE AND RESEARCH
LECTURE COURSE BUREAU
BUREAU OF VISUAL INSTRUCTION

THE UNIVERSITY OF KANSAS
UNIVERSITY EXTENSION DIVISION
LAWRENCE

DEPARTMENT OF EXTENSION TEACHING
BUREAU OF CLASS INSTRUCTION
BUREAU OF CORRESPONDENCE STUDY

January 17, 1941

Dr. F. C. Allen
105 Robinson
Campus

Dear Dr. Allen:

Yesterday during our conversation I mentioned that we had received several negatives made from the N.C.A.A. motion pictures and promised to send them to you. You will find the negatives enclosed.

These were returned to us by Mrs. Alice K. Griffith of the Athletic Journal when the motion pictures were returned. It may be that you will have some use for these negatives.

Sincerely yours,

Jed S. Montgomery
BUREAU OF VISUAL INSTRUCTION
Secretary

FSM:RM

TOURNAMENT OF CHAMPIONS

The World Series of Basketball



**OFFICIAL
PROGRAM**

15¢

MUNICIPAL AUDITORIUM

KANSAS CITY, MO.



MARCH 22, 23, 30



LONGINES

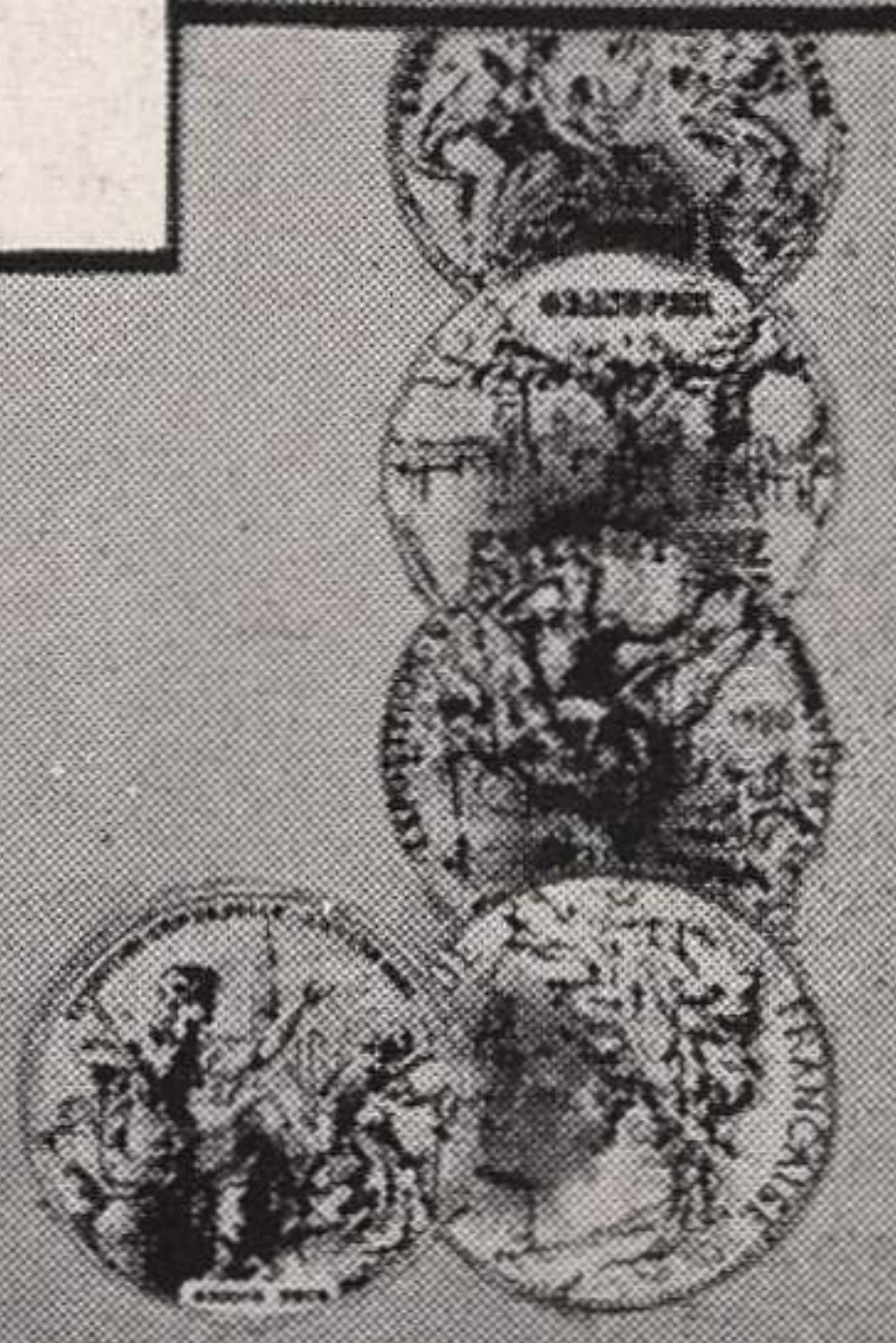
The World's Most Honored Watch
is the
OFFICIAL WATCH of ..

NATIONAL COLLEGIATE BASKETBALL CHAMPIONSHIPS

Longines is the watch chosen when *world* records must be *world* accepted. Longines watches officially time world's records of National Aeronautical Association and Federation Aeronautique Internationale around the globe. Longines also is official watch of United Air Lines, of American Museum of Natural History, of American Automobile Association and of the many events conducted by the Madison Square Garden, New York.

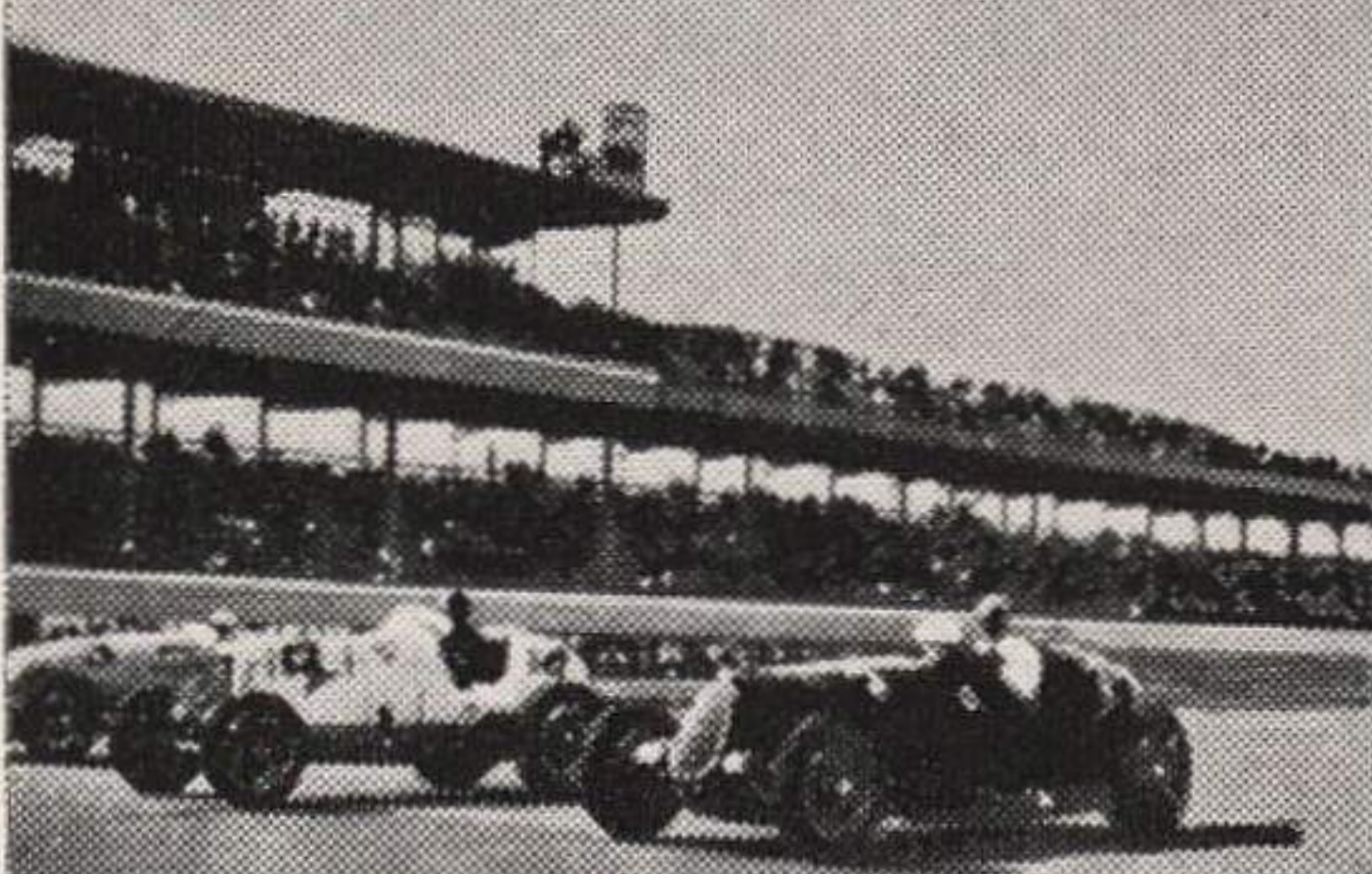


TWENTY-EIGHT GOLD MEDALS



TEN GRAND PRIZES

OFFICIAL WATCH OF THE AMERICAN AUTOMOBILE ASSOCIATION



OFFICIAL WATCH OF THE NATIONAL AERONAUTICAL ASSOCIATION



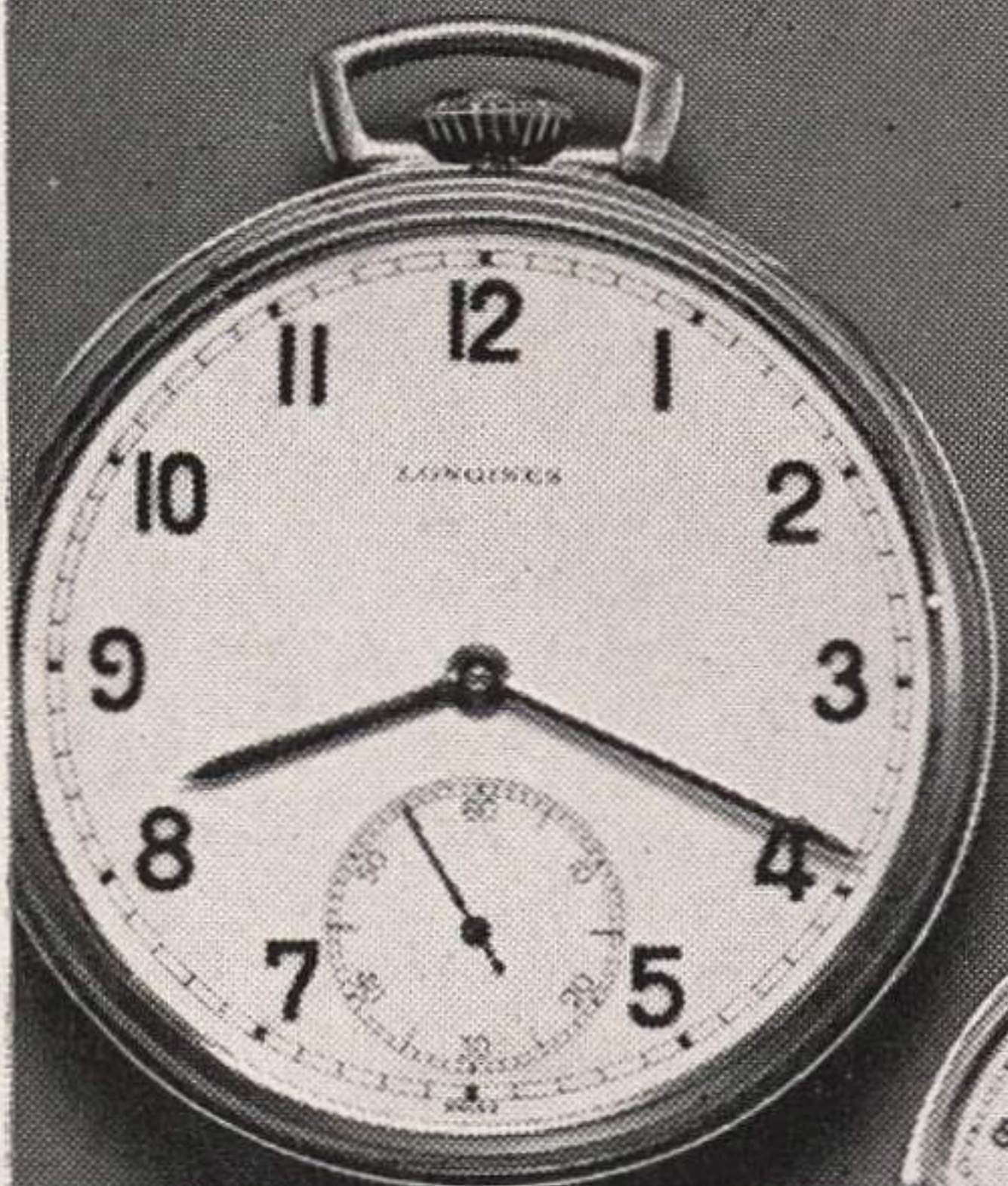
THE WATCH OF THE WORLD'S FAMOUS FLYERS



OFFICIAL WATCH OF UNITED AIR LINES FLYING U. S. AIRMAIL ROUTE NO. 1



WORLD'S LARGEST FINE WATCH FACTORY WHERE LONGINES WATCHES ARE MADE



Par Avion—Yellow Gold Filled; 17 Jewels\$47.50

Gold Medal—Yellow Gold Filled; 17 Jewels.....\$50.00

World's Fair—Yellow Gold Filled; 17 Jewels.....\$59.50

Par Avion—Yellow Gold Filled; 17 Jwls.....\$44.50

Presentation—14K Yellow Gold; 17 Jwls.....\$85.00

Official—Yellow Gold Filled; 17 Jwls.....\$60.00

Par Avion—Yellow Gold Filled; 17 Jwls.....\$44.50

Pres. Lincoln—14K Yellow Gold; 17 Jwls, Pink Gold Dial.....\$100.00

Chronograph—Time-out-Stainless Steel; 17 Jewels.....\$125.

New York · Paris

LONGINES-WITTNAUER WATCH CO., INC.

Montreal · Geneva

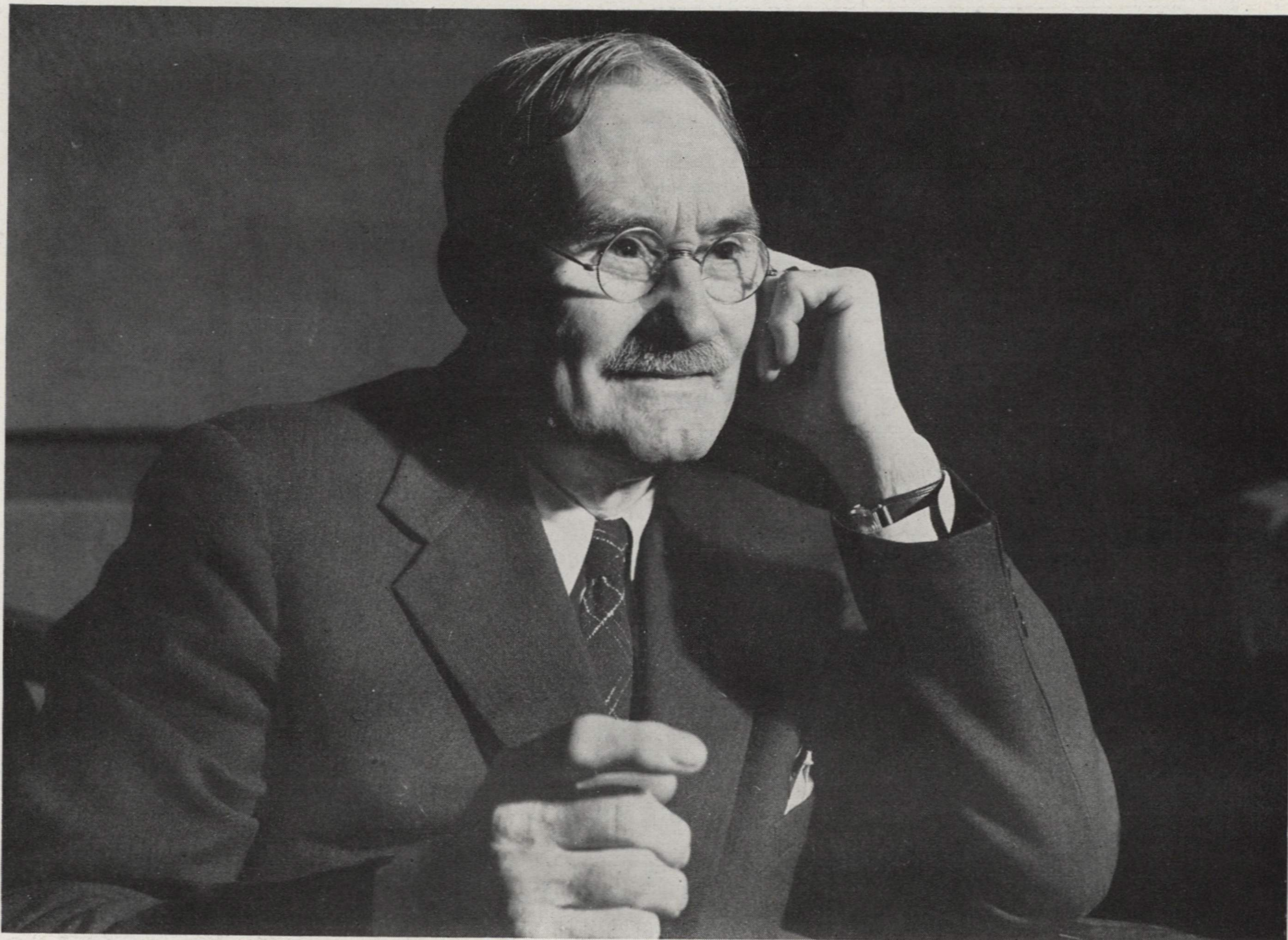
LONGINES WATCHES

WITTNAUER WATCHES

AGASSIZ WATCHES

TOUCHON WATCHES

A MEMORIAL TO DR. JAMES A. NAISMITH Creator of the Game of Basketball



The late Dr. James Naismith invented the game of Basketball in 1891 while in attendance at the Springfield, Mass., Y. M. C. A. College. This creative effort followed the urgent request of Dr. Luther Halsey Gulick, a Professor, to take care of eighteen football players who had no athletic sport to occupy them following the end of the football season. At that time Doctor Naismith was an ordained minister as also was Alonzo Stagg, former athletic director of the University of Chicago. Doctor Naismith evolved the funda-

mentals of basketball using peach baskets for goals. The following year, 1892, the first games were played.

"Basketball is a game easy to play but difficult to master," was one of the pertinent comments of Doctor Naismith. When the National Association of Basketball Coaches created a Naismith Night prior to the last Olympic games and had raised a fund of \$7,000.00 as an honorarium for him, Doctor Naismith made this laconic statement: "Do not be afraid to work for humanity and wait for your reward."

THE NATIONAL COLLEGIATE ATHLETIC ASSOCIATION Western Championships and National Finals

The N. C. A. A. 1940 Championship Basketball Games are played with the district winners of the West meeting in Kansas City, March 22 and 23, and the district winners of the East meeting at Indianapolis on the same dates. The World Series of Basketball with the Eastern and Western winners meeting for the National Title follows at the Municipal Auditorium, Kansas City, Missouri, March 30.

Dr. Forrest C. Allen of the University of Kansas, Lawrence, Kansas, is chairman of the fifth district and managing director for the Kansas City Tournament play.

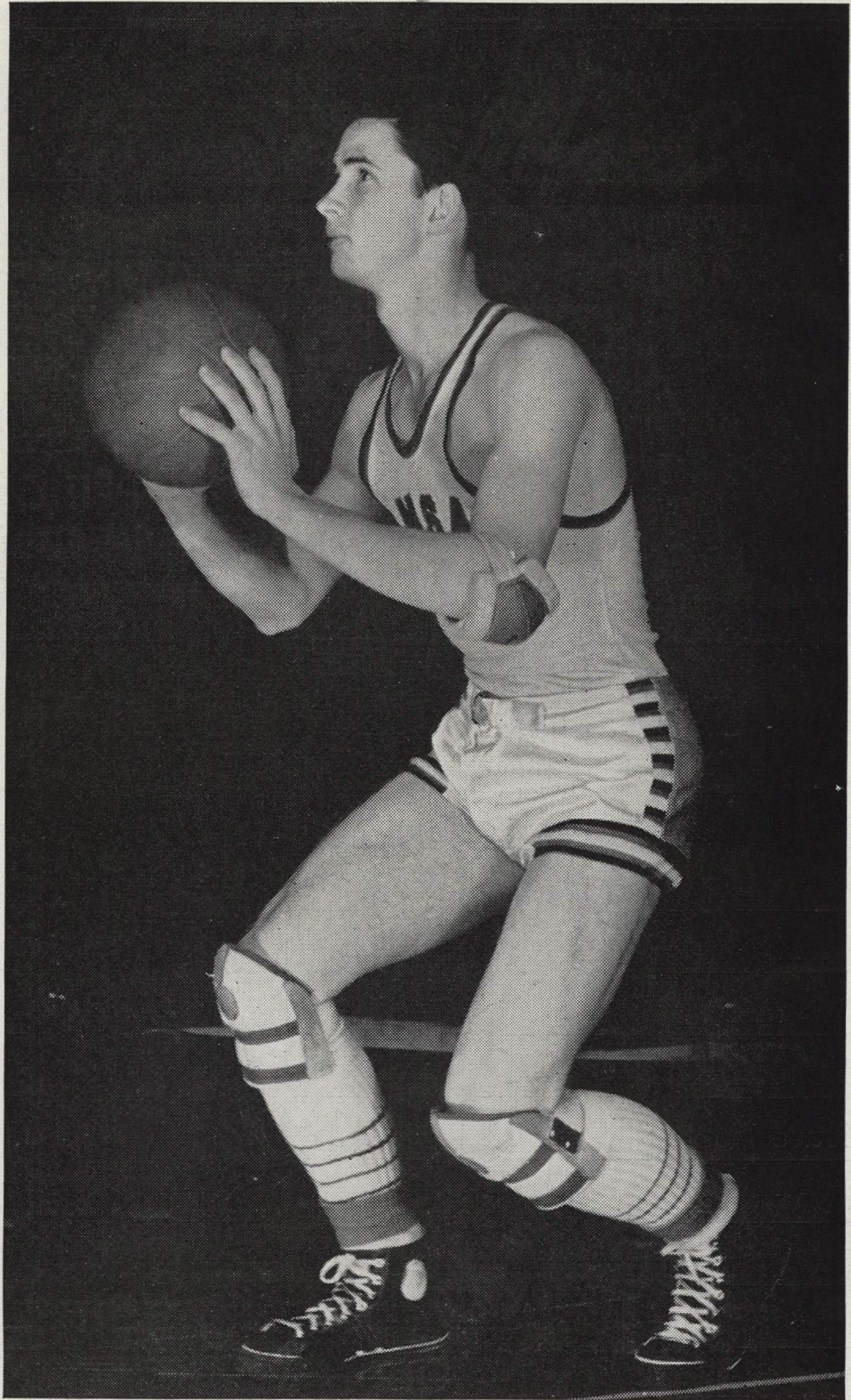
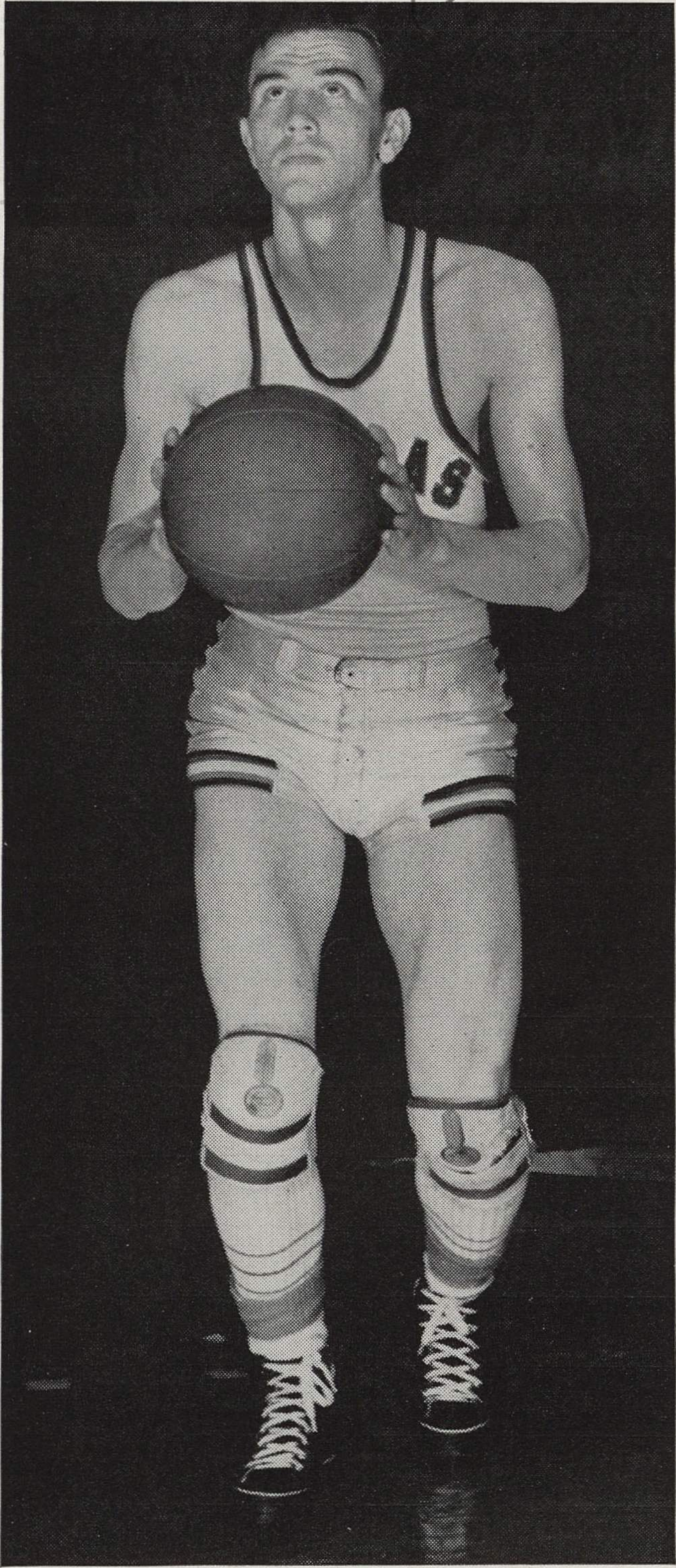
Following are the members of the General Committee for the 1940 Tournaments:

- J. W. Sinclair, Southern Methodist University, Dallas, Tex.
- Hec. Edmundston, Washington University, Seattle.
- Dr. Forrest C. Allen, University of Kansas, Lawrence, Ks.
- B. T. Grover, Ohio University, Athens, Ohio.
- H. G. Olsen, Ohio State University, Columbus, Ohio—
Chairman, N. C. A. A. Basketball Tournament.

UNIVERSITY OF COLORADO BUFFALOES



The University of Colorado not only won the Rocky Mountain or "Big 7" Conference but also finished as champion of the Metropolitan Invitational Basketball Tournament in Madison Square Garden, participated in by six of the strongest outstanding teams of America.



UNIVERSITY OF KANSAS STARS

Ralph Miller, forward or guard, left, and Bob Allen, center, right. Big Six co-champions 1940. Missouri Valley and Big Six championships won by Kansas—1922, 1923, 1924, 1925, 1926, 1927, 1931, 1932, 1933, 1934, 1936, 1937, 1938, 1940.

Smith-Grievens Co., Printers

Western Envelope Mfg. Co.

★ TWO COMPLETE ORGANIZATIONS UNDER
ONE MANAGEMENT • • • • SINCE 1909

Phones HArrison 2020-2021

1701 WASHINGTON
KANSAS CITY, MO.

Season Record of Rice Institute

Rice		Opp.	Rice		Opp.	Rice		Opp.
72	North Texas	37	57	T. C. U.	41	66	St. Mary's	47
65	Sam Houston	51	46	Texas	50	60	Arkansas	43
52	Sam Houston	42	48	T. C. U.	24	42	Arkansas	28
56	L. S. U.	39	36	S. M. U.	34	42	Texas	41
61	L. S. U.	51	62	Texas A. & M.	44			
60	Centenary	28	52	S. M. U.	33	1319	Totals	1009
60	Centenary	39	67	Texas A. & M.	54			
41	Purdue	52	43	Baylor	45			Won 21
55	Loyola, Chi.	41	52	Baylor	44			Lost 3
65	Bradley Tech.	58	59	St. Mary's	43			Ave.—55. Op. Ave.—42.

UNIVERSITY OF KANSAS					
Lawrence, Kansas					
Coach—Dr. Forrest "Phog" Allen					
PLAYER	No.	Pos.	G	F-T	F
Ralph Miller	4				
Don Ebling	12				
Bob Allen	9				
Dick Harp	20				
Bruce Voran	13				
Howard Engleman	5				
Bob Johnson	8				
John Kline	16				
T. P. Hunter	10				
Bill Hogben	6				
Jack Sands	—				

RICE INSTITUTE					
Houston, Texas					
Coach—"Buster" Brannon					
PLAYER	No.	Pos.	G	F-T	F
Bob Kinney	23				
Frank Carswell	19				
Bert Selman	25				
Levi Craddock	22				
Placido Gomez	12				
Chester Palmer	14				
Ike Steakley	17				
Fred Pepper	13				
Whitlock Zander	16				
Don Suman	20				
Stancil Norton	24				

Season Record of University of Kansas

Kansas		Opp.	Kansas		Opp.	Kansas		Opp.
34	Oklahoma A. & M.	30	31	Missouri	42	45	Oklahoma	39
31	Warrensburg T.	33	40	Nebraska	24	45	Oklahoma A. & M.	43
63	S. M. U.	31	36	Iowa State	34			
37	S. M. U.	26	22	Oklahoma A. & M.	24	875	Totals	722
34	Baker	18	44	Kansas State	33			
40	N. Mex. Mines	24	48	Nebraska	41			Won 17
52	Washburn	34	42	Iowa State	29			Lost 5
46	Oklahoma	26	42	Missouri	40			Ave.—40 pts. a game.
40	Loyola, Chicago	36	33	Creighton	35			Op. Ave.—33 pts. a game.
34	Kansas State	33	36	Oklahoma	47			

Season Record of the University of Southern California

U. S. C.	Opp.	U. S. C.	Opp.	U. S. C.	Opp.
44 DePaul	42	50 U. C. L. A.	32	47 U. C. L. A.	35
38 Purdue	34	51 Stanford	48	54 Oregon St.	41
55 Notre Dame	38	53 Stanford	36	62 Oregon St.	25
57 Long Island	49	60 U. C. L. A.	26		
46 Temple	30	30 California	38	1019 Totals	752
43 Loyola, L. A.	33	49 California	33		Won 19
59 St. Mary's	23	45 Stanford	46		Lost 2
49 California	36	39 Stanford	32		Ave.—48½ pts. a game.
56 California	49	32 U. C. L. A.	26		Op. Ave.—36 pts. a game.

UNIVERSITY OF COLORADO

Boulder, Colorado

Coach—"Frosty" Cox

PLAYER	No.	Pos.	G	F-T	F
Jack Harvey	3				
Gene Grove	4				
Bob Doll	5				
Donn Hendricks	6				
Don Thurman	7				
Leason McCloud	8				
Bill Cates	9				
George Hamburg	10				
Dick Emery	12				
Paul Schmidt	14				
Martin Trotsky	15				
John Musgrove	16				
Dick Merrill	18				

UNIVERSITY OF SOUTHERN CALIFORNIA

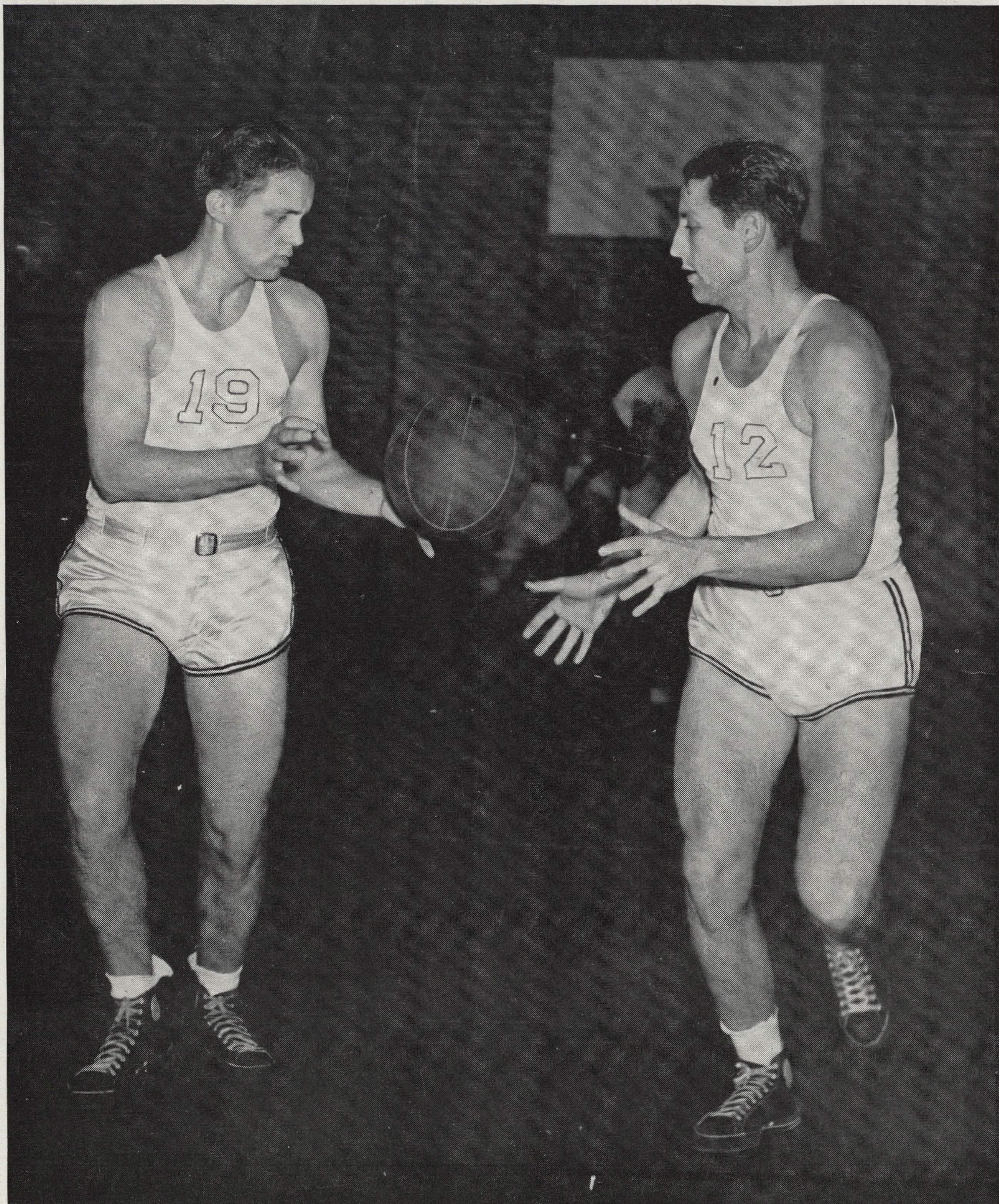
Los Angeles, California

Coach—Sam Barry

PLAYER	No.	Pos.	G	F-T	F
Ralph Vaughan	13				
Jack Morrison	8				
Dale Sears	10				
Tom McGarvin	7				
Jack Lippert	9				
Keith Lambert	3				
Bob Ormsby	18				
Leonard Berg	16				
Joe Reising	15				
Jack Barron	19				
John Luber	11				

Season Record of University of Colorado

Colorado	Opp.	Colorado	Opp.	Colorado	Opp.
59 Colo. Mines	38	44 Utah State	38	45 Utah	38
51 Colo. Mines	28	75 Brigham Young	47	52 DePaul	37
49 St. Joseph	25	64 Brigham Young	43	51 Duquesne	40
54 St. John's	39	66 Denver	25		
45 Duquesne	47	52 Denver	37	970 Totals	686
44 Wyoming	26	47 Colo. State	41		Won 17
50 Wyoming	34	52 Colo. State	34		Lost 2
28 Utah State	31	42 Utah	38		Ave.—51 pts. a game.
					Op. Ave.—36 pts. a game.



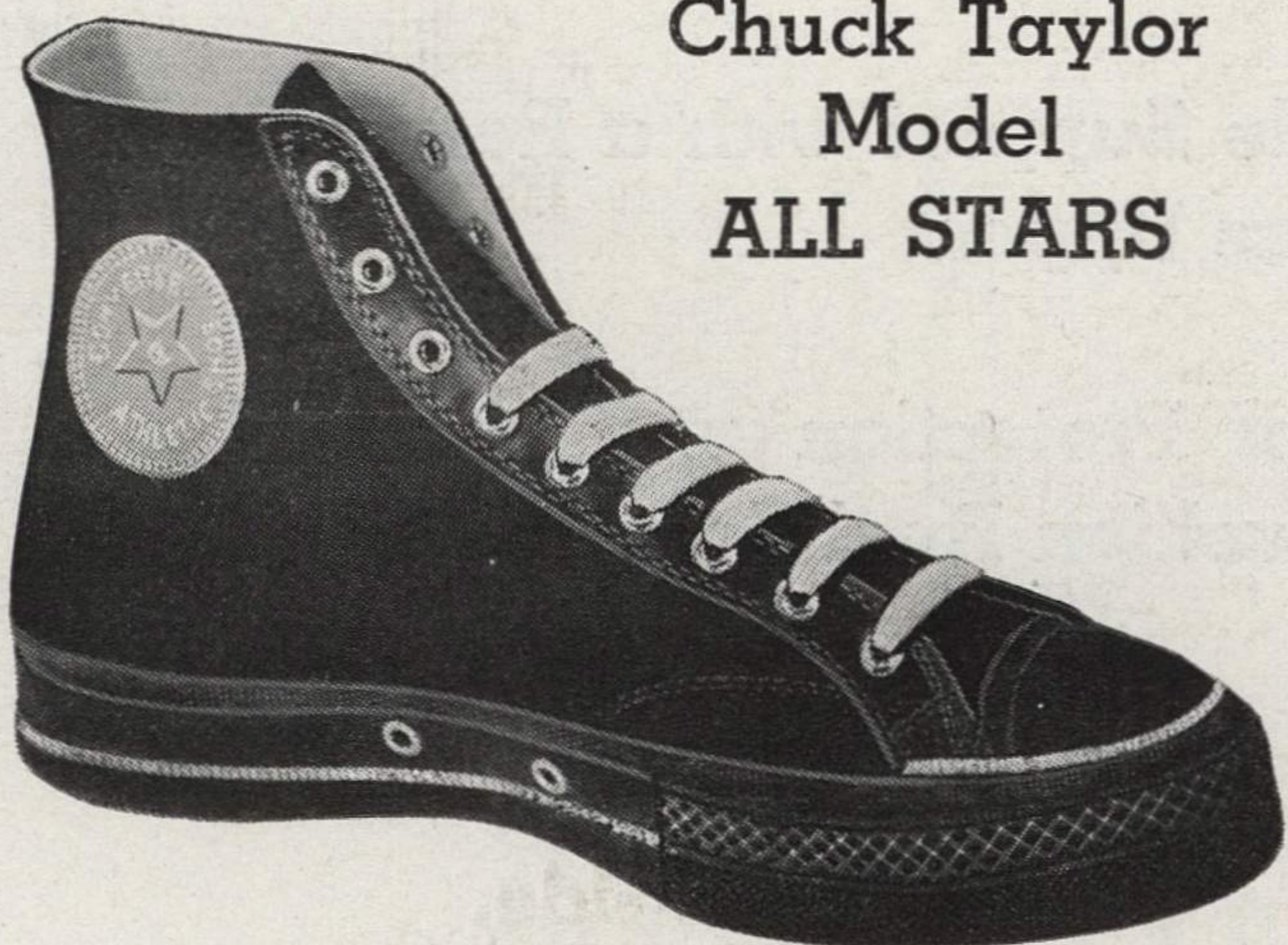
RICE INSTITUTE STARS

LEFT: Frank Carswell, two-time All-Southwest Conference guard. RIGHT: Placido Gomez, forward. Both are Houston boys on the Rice team.



University of Southern California basketball team with Coach Sam Barry (kneeling); Ralph Vaughn, forward; Dale Sears, center; Jack Lippert and Tom McGarvin, guards; and Jack Morrison, forward.

Wise Players Demand CONVERSE



Canvas All Star

Chuck Taylor
Model
ALL STARS



Non-Skid
All Star
Sole



Leather All Star

For better performance in every game; for more wins on the season's score sheet—**CHOOSE ALL STARS.**

CONVERSE RUBBER COMPANY, MALDEN, MASS.

200 Church St., New York

212 W. Monroe St., Chicago

242 E. Fifth St., St. Paul

Since 1915 our expenses have increased—

Our customers have increased.....	265%
Our employees have increased.....	345%
Our payroll has increased.....	796%
Our taxes have increased.....	2090%

Yet, in spite of INCREASED COSTS, electric rates have steadily DECREASED!



KANSAS CITY POWER & LIGHT COMPANY

AFTER THE GAMES TONIGHT—

THE PENGUIN ROOM - - - THE COCKTAIL LOUNGE - - -
AND THE POPULAR COFFEE SHOP

Kansas City's Newest and Smartest Hotel

Rates from \$2.50 Single

HOTEL CONTINENTAL



Lew Andreas

**COLLEGIATE
Basketball Shoes**

OFFER

- More Ankle Support with a Revolutionary Canvas Upper.
- Extra Heel Protection with a Double Sponge Cushion Heel Seat.
- Better Traction with a Live Rubber Moulded Suction Cup Outside.

ENDORSED BY
LEW ANDREAS,
SYRACUSE UNIVERSITY
BASKETBALL COACH

BEACON FALLS RUBBER FOOTWEAR

BEACON FALLS, CONN.

WHB

860 KILOCYCLES

Proudly Presents

"The Falstaff Sportsman"

ERNIE WHITNEY

6:15 P. M. Monday Through Saturday

5:30 P. M. Sunday

BEGINNING APRIL 1st



**For Full Coverage of All Major Sports Events Listen
to THE FALSTAFF SPORTSMAN on WHB**

PERFECTION

PERFECT
ROUNDNESS

PERFECT
BALANCE

PERFECT
REBOUND

PERFECT
FLIGHT

PERFECT
HANDLING

PERFECT CON-
TROLABILITY

A PERFECT SPHERE FOR MANY A YEAR



INFLATE
7 TO 9 LBS.

PATENT NOS.
2,086,094 2,116,479
OTHERS PENDING

You'll find it
in LAST-BILT

Wherever the game's finest teams meet in the biggest tournaments it is only natural that you'll find the finest basketball in play. It's LAST-BILT. Watch LAST-BILT in play during every game of this tournament — watch its unerring accuracy on every shot as it responds with unfailing fidelity to the players' action in bounce and flight. LAST-BILT is the perfect basketball, precisely built over a last, without seams to wear out and without laces. Official in every respect it is equipped with *two* valves and lasts longer than any basketball ever built. It is truly the "Perfect Sphere for Many a Year." Available in either white or standard tan.



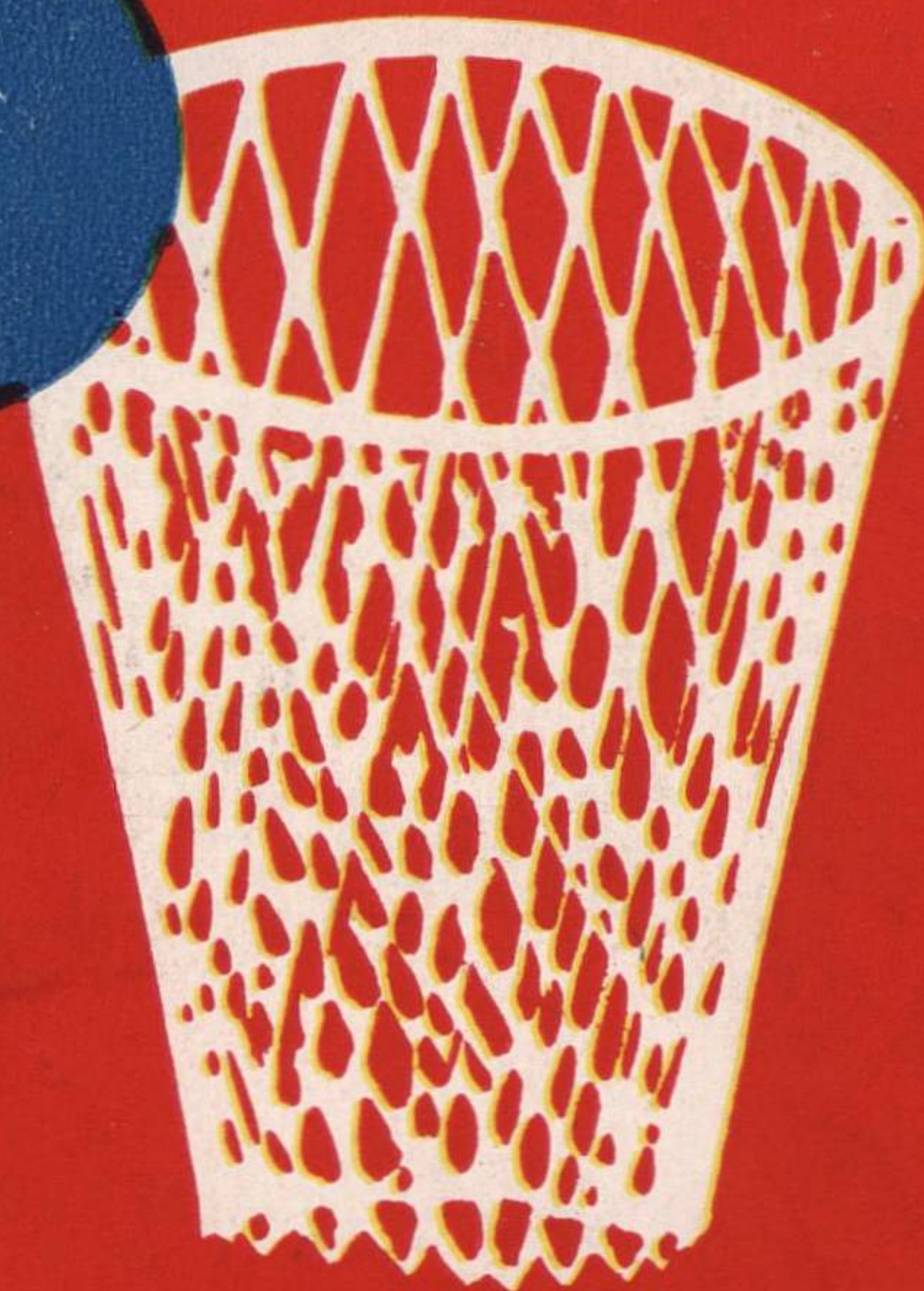
It's not a Last-Bilt without this trademark

**LAST-BILT BASKETBALLS MAY BE SECURED FROM
SPORTING GOODS DEALERS EVERYWHERE**

National Intercollegiate
Basketball Championship

★ **TOURNAMENT** ★

Municipal Auditorium
Kansas City, Missouri



Vil - Goddard
Vil - Goller
502 Delaware

OFFICIAL
SOUVENIR
PROGRAM

10¢

MARCH 11-12 13-14-15-16 • 1940

PERFECTION

PERFECT ROUNDNESS
PERFECT BALANCE
PERFECT REBOUND
PERFECT FLIGHT
PERFECT HANDLING
PERFECT CONTROLLABILITY

A PERFECT SPHERE FOR MANY A YEAR



INFLATE
7 TO 9 LBS.
PATENT NOS.
2,086,094 2,116,479
OTHERS PENDING

You'll find it
in LAST-BILT

Wherever the game's finest teams meet in the biggest tournaments it is only natural that you'll find the finest basketball in play. It's LAST-BILT. Watch LAST-BILT in play during every game of this tournament — watch its unerring accuracy on every shot as it responds with unfailing fidelity to the players' action in bounce and flight. LAST-BILT is the perfect basketball, precisely built over a last, without seams to wear out and without laces. Official in every respect it is equipped with *two* valves and lasts longer than any basketball ever built. It is truly the "Perfect Sphere for Many a Year." Available in either white or standard tan.



It's not a Last-Bilt without this trademark

**LAST-BILT BASKETBALLS MAY BE SECURED FROM
SPORTING GOODS DEALERS EVERYWHERE**

● History and Growth of the National Intercollegiate Basketball Championship Tournament and Organization of the National Association of Intercollegiate Basketball

The National Intercollegiate Basketball Championship Tournament had its beginning in 1938. That was the first effort by administrators of College Athletics to conduct a tournament open to all Colleges and Universities in the United States and to determine the National Intercollegiate Basketball Championship. Thirty-two teams, selected from fifteen districts, representing an area of more than thirty states, participated. The title was won by Central Missouri State Teachers College, Warrensburg, Missouri, who defeated Roanoke College, Salem, Virginia in the finals.

With practically the same organization the tournament was again held in 1939, with thirty-two teams participating. Those teams represented sixteen districts, which covered an area of approximately thirty-two states. Southwestern College of Winfield, Kansas, won the title by defeating San Diego State College, San Diego, California, in a hectic final game—32 to 31.

As a result of the rapid growth of basketball and the resultant nation-wide interest in a National Championship Tournament, the National Association of Intercollegiate Basketball was organized. This Association had its actual beginning March 15, 1939, in Kansas City. Recently the permanent organization was completed.

Membership in the organization is institutional. It

is open to Colleges and Universities that offer standard four year courses and whose academic work is recognized by exacting standardizing agencies and graduate Universities. Memberships from 25 different states have been approved. Sponsoring of the National Intercollegiate Basketball Championship Tournament is but one part of the program approved by the Association. It includes an active national program designed to aid in the development and protection of Intercollegiate Basketball.

The Association is controlled by an executive board, composed of the district chairmen of thirty-two districts, each of whom has been selected from the Association membership. The personnel of this board consists of Athletic Directors, Basketball Coaches, and Graduate Managers. Every member has faculty rating. Members are chosen from state universities, state colleges, normal universities, and privately-endowed colleges and universities. No special athletic code of eligibility is required for membership. Eligibility codes of members are left to the governing body of athletics in each member institution. The National Intercollegiate Basketball Championship Tournament is open to non-members as well as members. Non-members must meet the same academic requirements as members and must qualify in the same manner as association members.

● National Intercollegiate Basketball Championship Tournament

Auspices of National Association of Intercollegiate Basketball

E. S. LISTON—Managing Director

EUGENE ZACHMAN—Director, Municipal Auditorium

HOST ORGANIZATION

Junior Chamber of Commerce Committee

PUBLIC ADDRESS

G. V. Bourrette Charles Burke

FLOOR COMMITTEE

Les Freeburg Wm. Powell A. E. Talbott

ASSISTANT FLOOR COMMITTEE

Marion Miller Kenneth Sells Frank Hood

SCORERS AND TIMERS

Roy A. Watkins Harley Selvidge Don Caps Les Warren

TOURNAMENT PHYSICIAN

D. M. Nigro

PUBLICITY

American Press Syndicate George W. Bowles

INFORMATION

Frances Rosenberg

PROGRAM

a B. & L. Publication

OFFICIALS

E. C. Quigley

St. Marys, Kansas, Supervisor

Alvin Bell

Southern District, Little Rock, Arkansas

Ted O'Sullivan

Missouri Valley District, Kansas City, Mo.

Ike Craig

Big Ten District, Chicago, Illinois

R. L. Barton

Rocky Mountain District, Denver, Colo.



LONGINES

The World's Most Honored Watch

is the
OFFICIAL WATCH of ..

THE NATIONAL INTERCOLLEGIATE BASKETBALL CHAMPIONSHIP TOURNAMENT

Longines is the watch chosen when *world* records must be *world* accepted. Longines watches officially time world's records of National Aeronautical Association and Federation Aeronautique Internationale around the globe. Longines also is official watch of United Air Lines, of American Museum of Natural History, of American Automobile Association and of the many events conducted by the Madison Square Garden, New York.

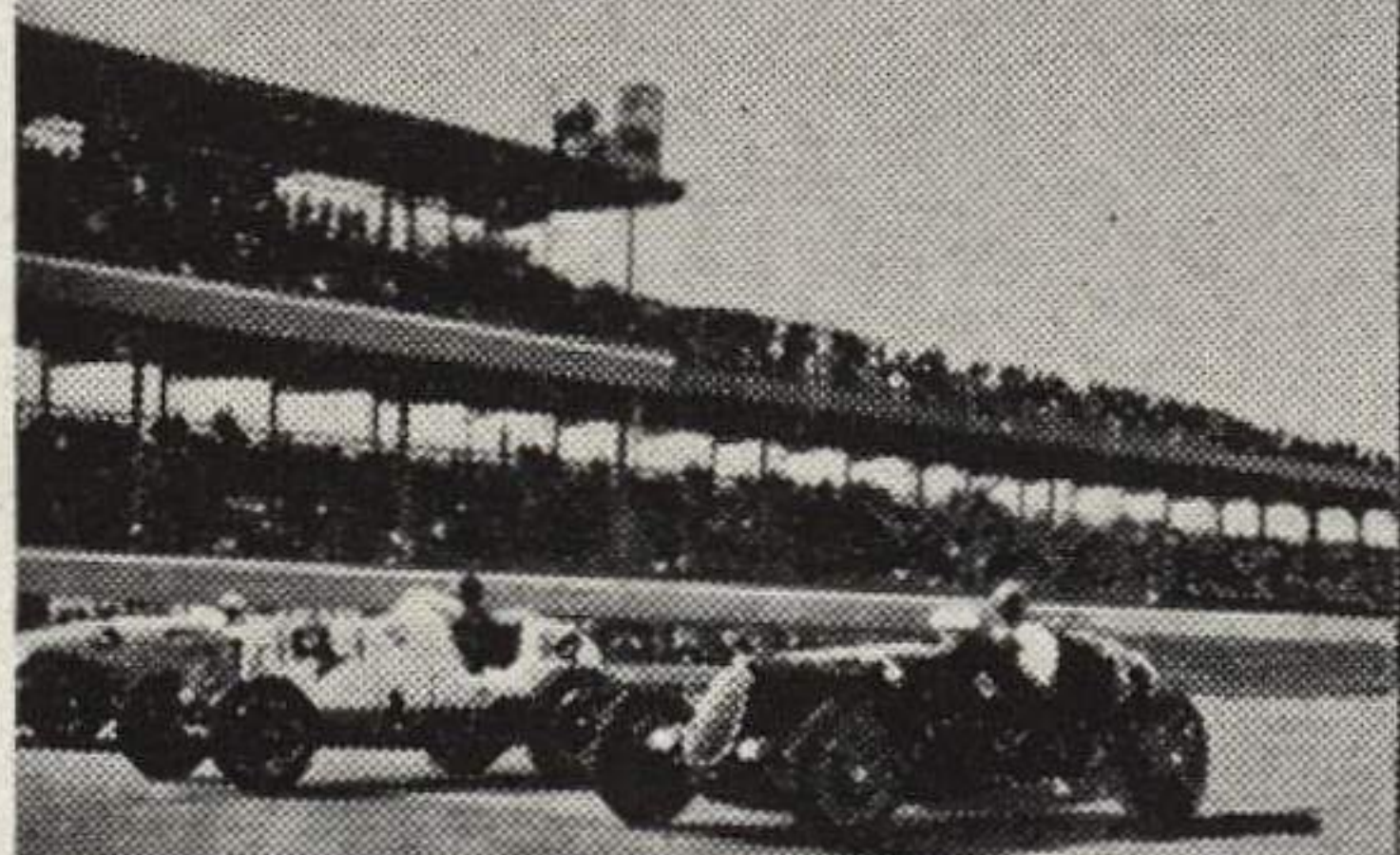


TWENTY-EIGHT GOLD MEDALS



TEN GRAND PRIZES

OFFICIAL WATCH OF THE AMERICAN AUTOMOBILE ASSOCIATION



OFFICIAL WATCH OF THE NATIONAL AERONAUTICAL ASSOCIATION



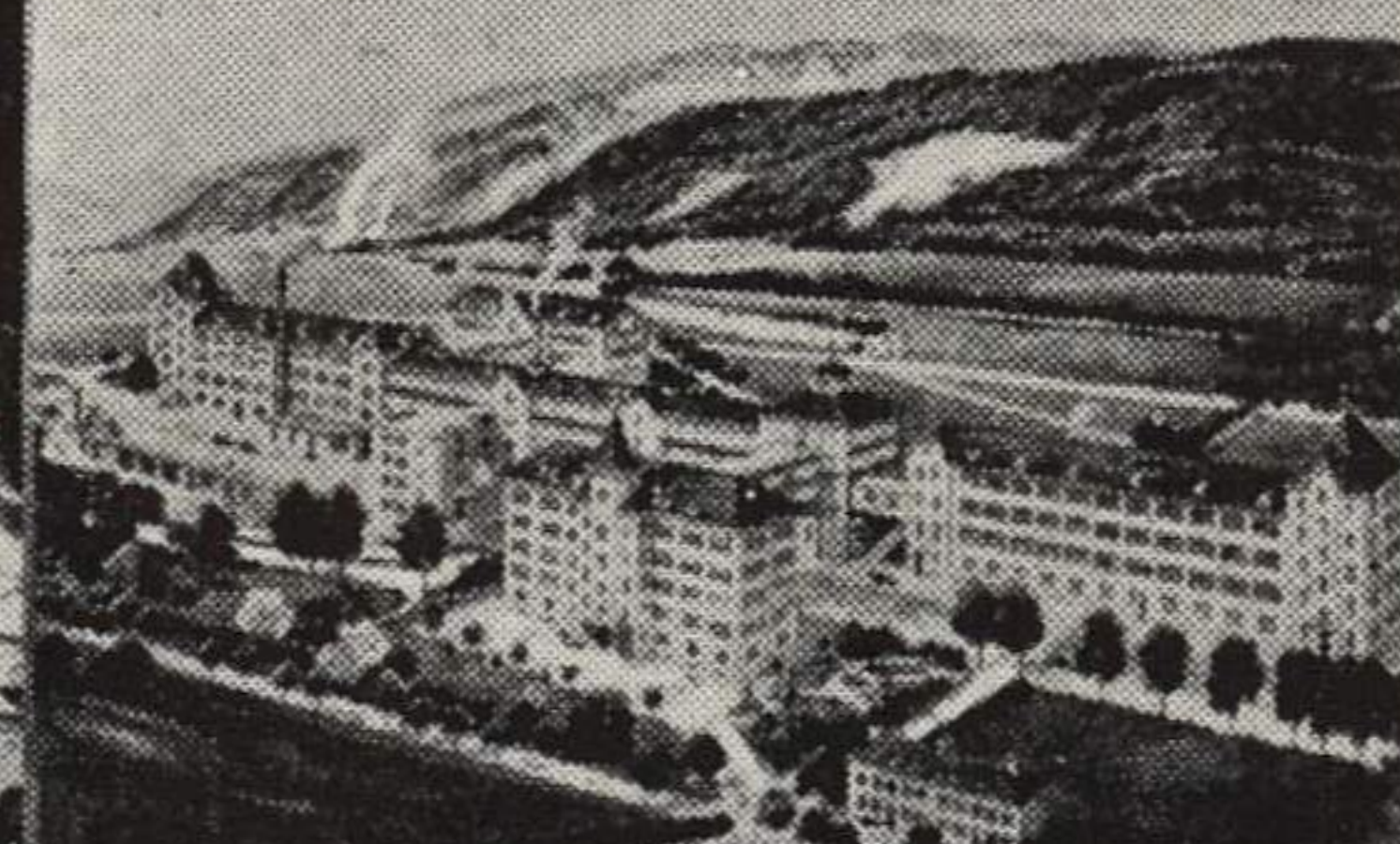
THE WATCH OF THE WORLD'S FAMOUS FLYERS



OFFICIAL WATCH OF UNITED AIR LINES FLYING U. S. AIRMAIL ROUTE NO. 1



WORLD'S LARGEST FINE WATCH FACTORY WHERE LONGINES WATCHES ARE MADE



Par Avion—Yellow Gold Filled; 17 Jewels\$47.50

Gold Medal—Yellow Gold Filled; 17 Jewels.....\$50.00

World's Fair—Yellow Gold Filled; 17 Jewels.....\$59.50

Par Avion—Yellow Gold Filled; 17 Jwls.....\$44.50

Presentation—14K Yellow Gold; 17 Jwls.....\$85.00

Official—Yellow Gold Filled; 17 Jwls.....\$60.00

Par Avion—Yellow Gold Filled; 17 Jwls.....\$44.50

Pres. Lincoln—14K Yellow Gold Dial.....\$100.00

Chronograph—Time-out-Stainless Steel; 17 Jewels.....\$125.

New York • Paris **LONGINES-WITNAUER WATCH CO., INC.** Montreal • Geneva
LONGINES WATCHES • WITNAUER WATCHES • AGASSIZ WATCHES • TOUCHON WATCHES

In Memoriam



Dr. James A. Naismith

Founder of Basketball

Born

November 6, 1861

Died

November 28, 1939

Wise Players Demand

CONVERSE

Chuck Taylor Model

ALL STARS



Canvas All Star



**Non-Skid
All Star
Sole**



Leather All Star

There's one chief reason why **CONVERSE ALL STARS** outsell any other basketball shoe made. **They Out-Perform.**

ALL STARS favor your feet — give you that sure-stop traction; they're light, yet sturdy and durable for a season of the toughest contests.

For better performance in every game; for more wins on the season's score sheet — **CHOOSE ALL STARS.**

CONVERSE RUBBER COMPANY
MALDEN, MASS.

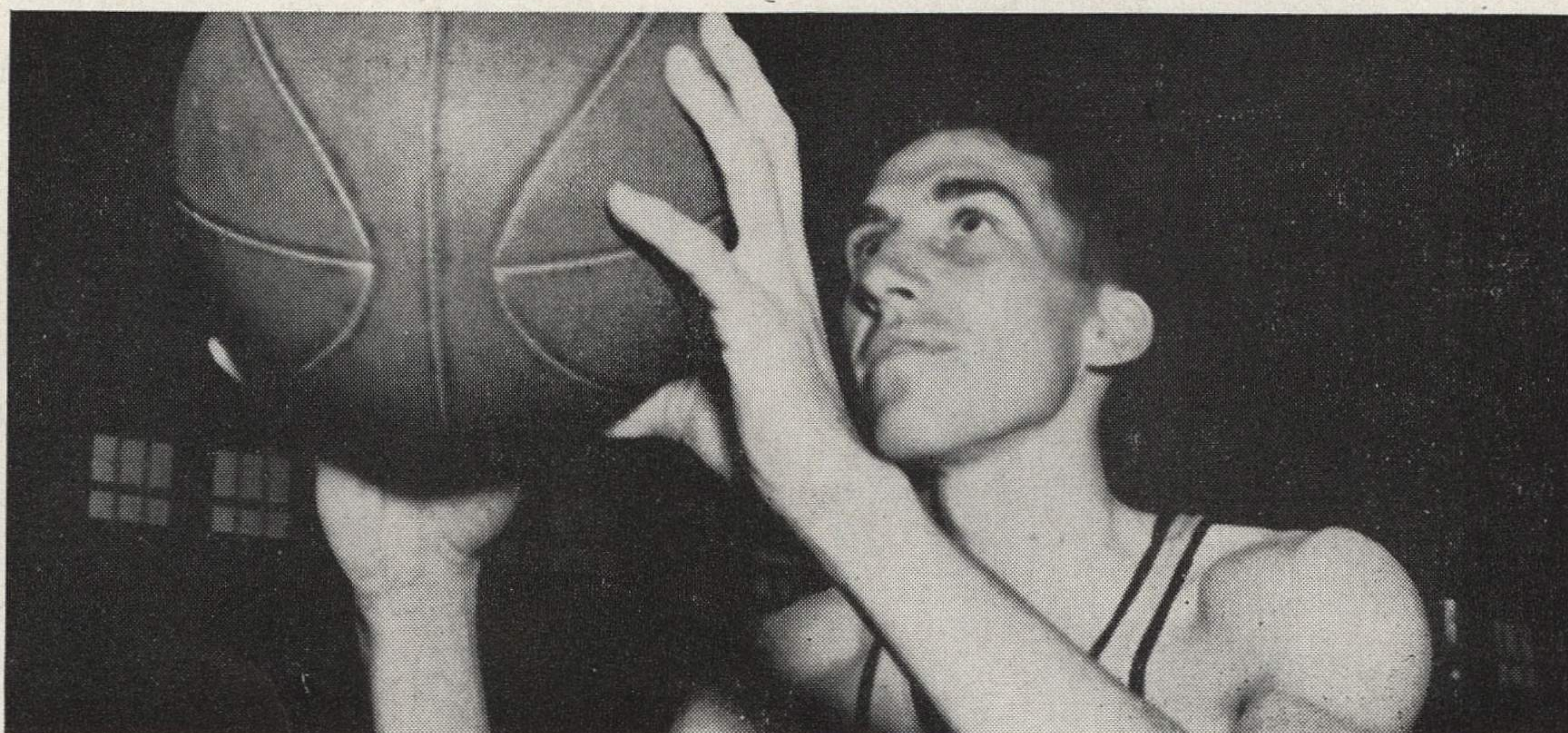
200 Church St., New York

212 W. Monroe St., Chicago

242 E. Fifth St., St. Paul

OUTSTANDING STARS

1939 TOURNAMENT



CARPENTER, East Texas State Teachers College, center. Scored 23 points against Southwestern Missouri State Teachers College, Springfield, Missouri, scoring ten field goals and three free throws, 1939.

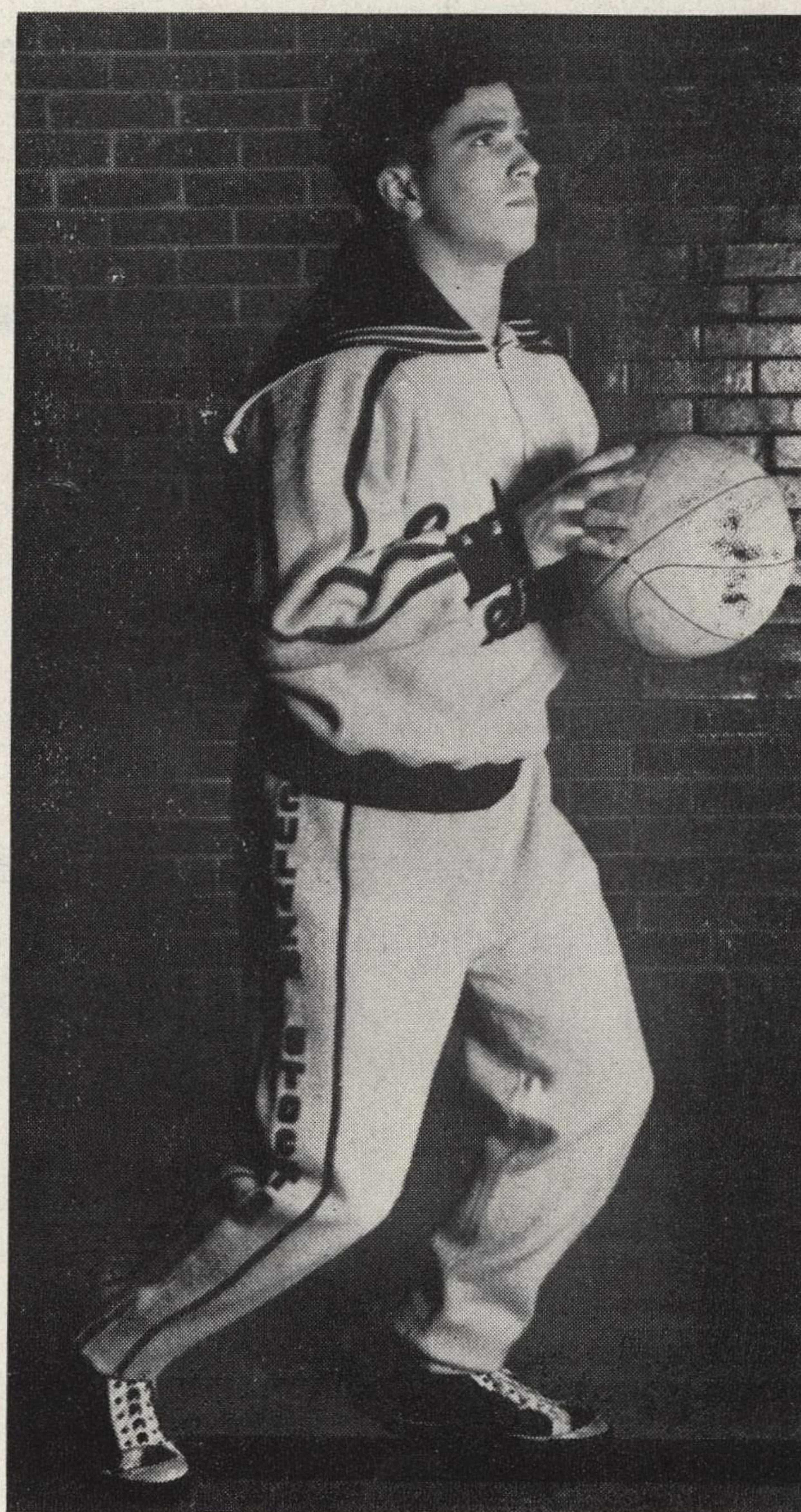


RHOADES, Glenville State Teachers College, Glenville, West Virginia, forward. Scored 13 field goals and 2 free throws for a total of 28 points against the State Teachers College of Peru, Nebraska, 1939.

TEAM SCORING RECORD

was made by Glenville State Teachers College. They scored 73 points against Peru State Teachers College, 1939.

HOFF, Culver—Stockton, Canton, Mo., guard. Scored 21 points against Winona State Teachers College, Winona, Minn. Scored seven field goals and seven free throws, 1939.





The Winner of the championship will be awarded the James A. Naismith Memorial Trophy in honor of Maude Naismith, deceased wife of the founder of basketball.

The trophy is emblematic of the winner of the intercollegiate basketball championship of the United States. It is a permanent award to the winning school.

YELLOW CABS

"Night or Day — —

Only a Few Minutes Away"

Phone GRAND 5000

Convenient—

Economical—

Safe



CLEVELAND

CHIROPRACTIC COLLEGE

Kansas City, Missouri



A Kansas City Institution — Est. 1922

A Nationally Recognized Training. Most Modern X-Ray Facilities and a Health Service, either Clinic or Private, Second to None.

Clinical and Employment Advantages of a Great City.

Get an Education That Will Pay You Dividends on Graduation.

Enroll Now!

Write for Catalog

MONDAY AFTERNOON — 12:30 P. M.

ALFRED HOLBROOK COLLEGE Manchester, Ohio Coach Mendell C. Beatty						
PLAYER	LIGHT SHIRT NO.	DARK SHIRT NO.	POS.	G	F-T	F
RUDISILL, W.	22					
PELLEGRINON, H.	26					
GARRETT, R.	27					
ROUSH, C. (Capt.)	23					
McNULTY, R.	25					
MORRIS, M.	21					
BOLENDER, A.	20					
MARTIN, R.	29					
ROUSH, J.	28					
MARTIN, L.	24					

TARKIO COLLEGE Tarkio, Mo. Coach N. P. Kyle						
PLAYER	LIGHT SHIRT NO.	DARK SHIRT NO.	POS.	G	F-T	F
WAITS, M.	66					
LEWIS, H.	77					
MITCHELL, R.	22					
RANKIN, J.	44					
McPHERSON, P.	99					
LEWIS, G.	33					
ARNEAL, J.	11					
CRAWFORD, G.	55					
MARTIN, L.	88					
WARNSTAFF, C.	75					

Soon . . .

Fur Storage Time

A-B-C's RATES

FUR COATS (\$100 Value) **\$1.50**

CLOTH COATS (\$50 Value) **\$1.00**

\$1,750,000 ALL RISK INSURANCE
FOURTEEN SCIENTIFIC DEPOSITORIES

VICTOR

0123



VICTOR

0123

33rd & Main Linwood & Prospect Troost & Eighth

Cramer First Aids & Trainers Supplies

made of the finest crude chemicals
"world markets" can supply.

They are "official" for this entire tournament.

FRANK AND CHUCK CRAMER
are in charge of the training room.

A. O. THOMPSON LUMBER CO.

General Office—Phone BEnton 7221

3100 E. 18th St., Kansas City, Mo.

WHOLESALE — RETAIL
Everything in Lumber
One piece or a Carload

Soft & Hard Woods - Ties - Bridge Material - Piling

4 Yards in Greater Kansas City

Industrial Business Solicited — Prompt Deliveries

MONDAY AFTERNOON — 1:45 P. M.

PACIFIC UNIVERSITY Forest Grove, Oregon Coach Pete Miller							HAMLINE UNIVERSITY St. Paul, Minnesota Coach J. W. Hutton						
PLAYER	LIGHT SHIRT NO.	DARK SHIRT NO.	POS.	G	F-T	F	PLAYER	LIGHT SHIRT NO.	DARK SHIRT NO.	POS.	G	F-T	F
SEIM, J.	5						CAMPBELL, J.	12					
EILERTSEN, E. (Capt.)	13						CONNER, T.	4					
COONEY ROBT.	10						NORLANDER, J.	16					
OSBURN, T.	16						MOGUSH, J.	19					
McCABE, R.	3						GUMLIA, G.	14					
KELLER, G.	4						GREENOUGH, K.	17					
COONEY, R.	7						RIDGEWAY, H.	9					
RANKIN, F.	8						O'ROURKE, H.	6					
HALLER, W.	6						JOHNSON, C.	5					
WAHNER, W.	9						ELIASON, D.	18					



COMET

The new Basketball Keds that has everything a basketball player could want. Made in five different colors: Men's Black, Black Trim; Men's White, White Trim; Men's Blue, White Trim; Men's Maroon, White Trim; Men's Green, White Trim.

- ★ Built-in Flexible Arch Cushion.
- ★ Slant-cut, loose-lined duck upper.
- ★ Scientific Last.
- ★ Smooth toe construction.
- ★ Shock-Proof insole.
- ★ Pull-Proof eyelets.

Offer

- ★ Shaped tongue with name space.
- ★ Inside reinforcing backstay.
- ★ "Flat-tread" molded sole.
- ★ Full ventilation.
- ★ Washable.

The Foundation for Building Up a good team is **GOOD FOOTWORK.**

KEDS BASKETBALL SHOES

UNITED STATES RUBBER CO.

COMPLIMENTS OF

KANSAS CITY FIBRE BOX CO.

DIVISION OF THE

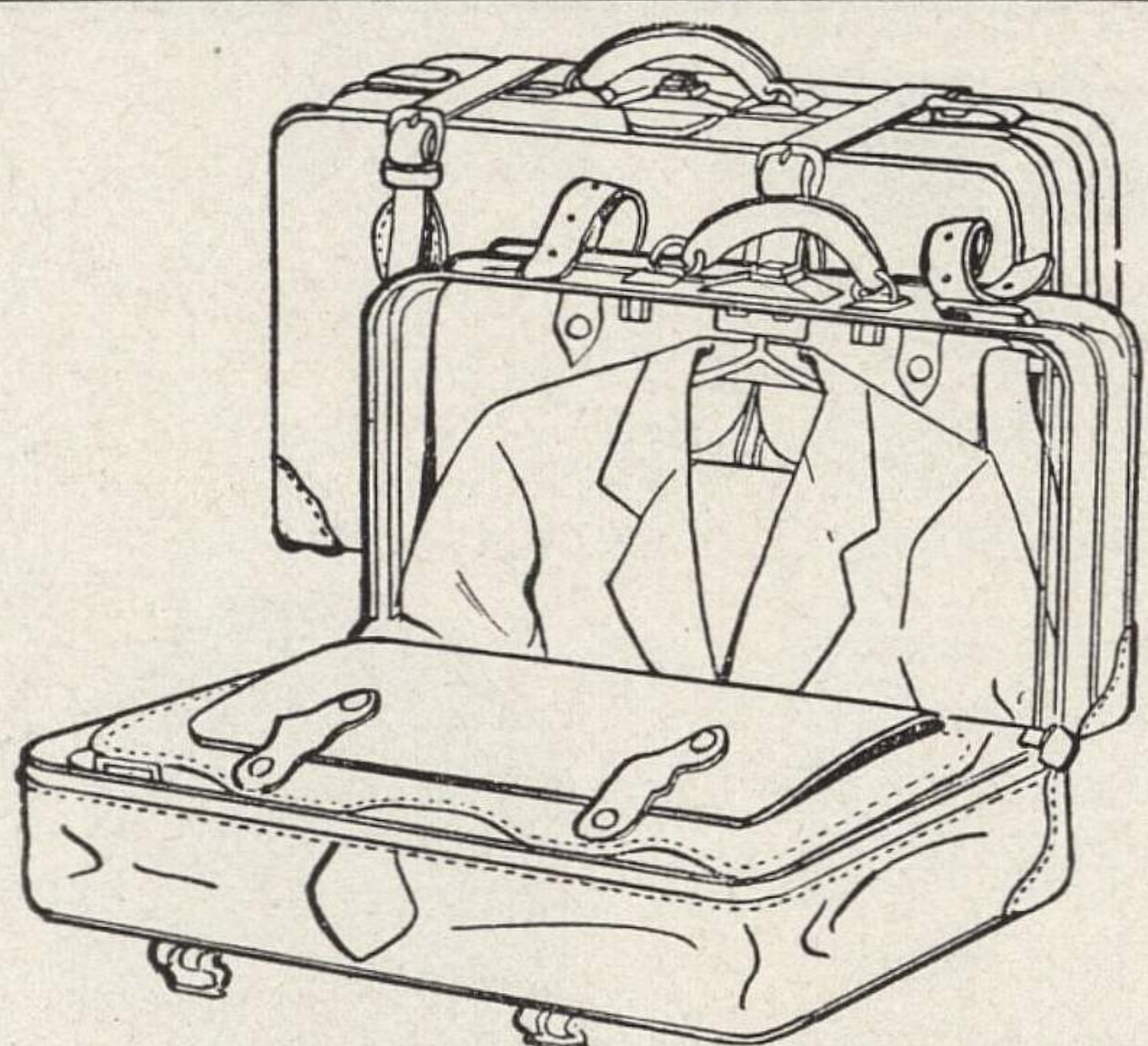
HINDE AND DAUCH PAPER CO.

JAMES F. CLEARY, VICE-PRESIDENT

MONDAY AFTERNOON — — 3:00 P. M.

EAST TEXAS STATE TEACHERS COLLEGE Commerce, Texas Coach Dennis Vinzant						
PLAYER	LIGHT SHIRT NO.	DARK SHIRT NO.	POS.	G	F-T	F
CARPENTER, R.	37					
VANDERSLICE, W.	39					
RENWICK, W.	33					
McDANIELS, C.	40					
FITE, R. L.	38					
GIBSON, J.	44					
GOLDING, L.	41					
REDWINE, W. J.	30					
MIDDLETON, J.	34					
MIDDLETON, H.	31					
FULLER, H.	42					
THOMPSON, T.	43					

RIPON COLLEGE Ripon, Wisc. Coach Carl H. Doehling						
PLAYER	LIGHT SHIRT NO.	DARK SHIRT NO.	POS.	G	F-T	F
BLANAS	4	7				
HILDEBRANDT, J.	8	8				
ARDJIEWSKE, S.	10	10				
CHRISTENSEN, I.	12	4				
MILLER, K.	14	5				
KRCMAR, S.	11	11				
REMBER, J.	19	9				
WILLIAMS, L.	20	13				
BLOECKER, M.	16	6				



NEW GLADSTONE
ONE SUITER BAG
CARRIES SUIT HANGING
PLUS ALL ACCESSORIES

Top Grain Cowhide.....\$9.95
Saddle Hide\$19.50

SADDLE HIDE *Life Time Luggage*

The kind you have always wanted to own and carry—

NOW PRICED LOWER
THAN YOU HAD EVER HOPED FOR
NEW 1940 SAMPLES

THE BOOKS K. C. TRUNK CO.

1007 MAIN ST.
KANSAS CITY, MO.

GARMENT STORAGE

FAULTLESS LAUNDRY

Odorless Dry Cleaning—Linen Supply

Phone HArrison 2373 Broadway at Tenth
Kansas City, Missouri

**15% Discount Cash and
Carry on
LAUNDRY SERVICE**



*The "Ultimate Low
Cost Wire Rope"*



**UNION WIRE ROPE
CORPORATION**

KANSAS CITY, MISSOURI

Warehouses and Sales Offices
Tulsa - Ft. Worth - Houston - Chicago
New Orleans - Denver - Monahans - Portland

MONDAY AFTERNOON — — 4:15 P. M.

KANSAS STATE TEACHERS COLLEGE Pittsburg, Kansas Coach John Lance						
PLAYER	LIGHT SHIRT NO.	DARK SHIRT NO.	POS.	G	F-T	F
ADAMS, J.	31	44				
BULLER, B.	17	43				
HUTTER, J.	16	28				
LANCE, J. Jr.	26	36				
LONG, L.	20	20				
MORGAN, B.	30	31				
REEDER, C.	18	30				
RUTHERFORD, D.	24	40				
RYAN, E.	11	23				
RYDEN, M.	25	34				
STURDY, D.	32	42				
UHLENHOP, L.	12	45				

ST. JOSEPH COLLEGE Collegeville, Indiana Coach J. S. Dienhart						
PLAYER	LIGHT SHIRT NO.	DARK SHIRT NO.	POS.	G	F-T	F
BOWMAN, N.	23	25				
GUTGSELL, M.	35	23				
MOSSER, N.	28	34				
HOFFMAN, B.	43	37				
PFEFFER, U.	29	36				
BOEDEKER, J.	24	24				
BAHLER, B.	38	29				
RIECHERT, C.	26	27				
POZEVIC, A.	27	33				
YOCIS, J.	33	35				

5 STAR OFFER

(To Customers Only)

Trade in the old cook stove for a new 1940 **ELECTRIC** Range. This 5-Star Offer gives you—

1. FREE Wiring Installation under Standard Plan
2. FREE Service for One Year
3. FREE Set of Heavy Aluminumware
4. FREE Home Economist Service
5. Liberal Trade-In Allowance for Present Cooking Equipment.

See Your Dealer or

KANSAS CITY POWER & LIGHT CO.

The COMMONWEALTH HOTEL

1216 BROADWAY, KANSAS CITY, MO.

One Block From the Auditorium

400 Rooms and Apartments
(With Bath)

A Comfortable Home for the Transient
Visitor or for the Resident Family.

Rooms from \$2.00. Apartments from \$45.00 Monthly

PAUL DICKSON, Manager

**Special—
New Coffee Shop**

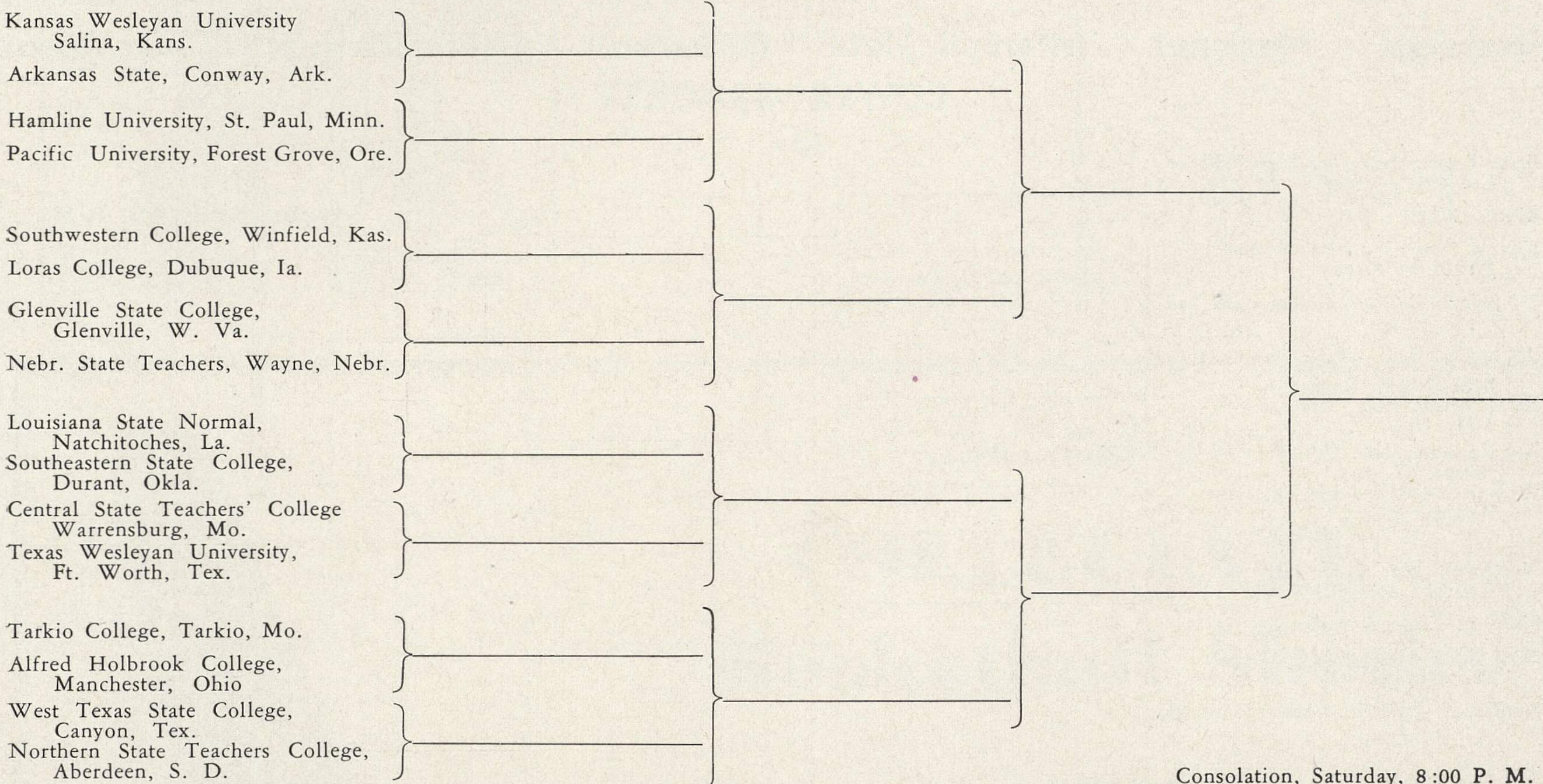
Club Breakfasts25c-35c
Special Luncheons.....45c-50c
Table d'Hote Dinners50c-75c

Excellent Foods Plus Quick, Courteous Service

CLAUDE SCHULER, Asst. Manager

**A Beautiful Traveling Bag will be presented to the Coach of the 1940 Champions by
Books K-C Trunk Company**

Drawings National Intercollegiate Basketball Championship Tournament UPPER BRACKET



Consolation, Saturday, 8:00 P. M.

How Much or How Good?

BEFORE MONEY IS SPENT FOR ANY COMMODITY, THE PURCHASER USUALLY WANTS TO KNOW WHAT THE COST WILL BE. THAT IS NATURAL AND BUSINESSLIKE AS WELL.

AS APPLIED TO PRINTED ADVERTISING, WHAT IS THE ESSENTIAL THING? WHICH IS OF VITAL IMPORTANCE; HOW MUCH IT COSTS OR HOW MUCH IT WILL DO!

PEOPLE USUALLY GET WHAT THEY PAY FOR, AND NO MORE. WHO HAS NOT BEEN PERSUADED AGAINST HIS BETTER JUDGMENT, TO BUY SOMETHING APPARENTLY LOW-PRICED, ONLY TO REALIZE LATER ON THAT CHEAPNESS AND SHODDINESS ARE SIAMESE TWINS?

We do not try to beat the town on price, but we do propose to give the buyer a lot for his money. We invite you to call us.

Vile-Goller Printing Co.

"Two Live Wires"

502 Delaware St.

Tel. HArrison 1847



Yours for Sport
R.S. Elliott ARMS CO.
 1508-10 GRAND AVE KANSAS CITY, MO.

**STREAMLINED
BUSINESS TRAINING**

DAY and EVENING CLASSES—Courses in Secre-
 tarial and Stenographic—Business Machines
 —Bookkeeping—Accounting—Advertising
 —Sales—Commercial Art.

48 Page Illustrated Catalog Free on Request

COLLEGE OF COMMERCE

Victor 1347 408 East Eleventh

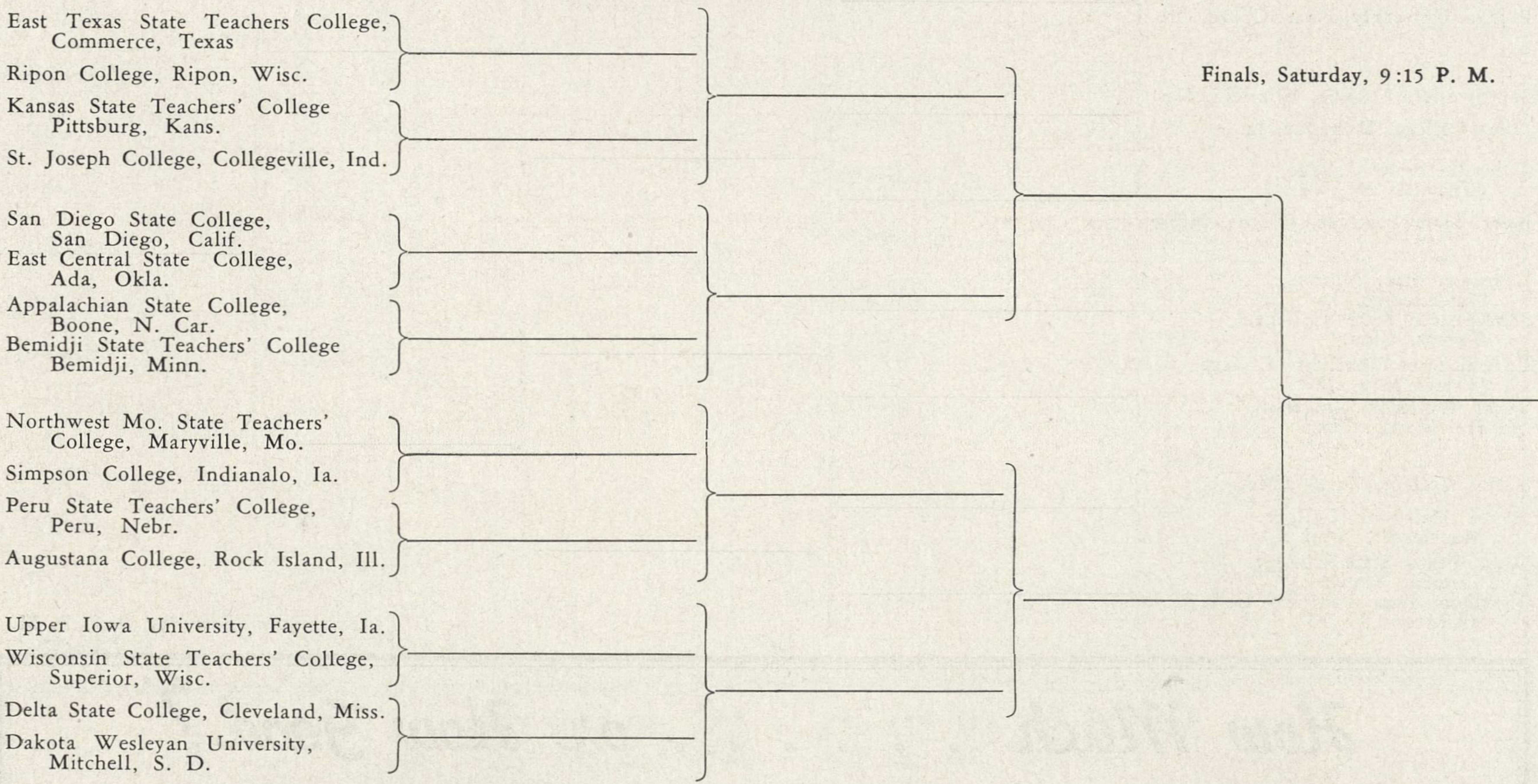
ALADDIN HOTEL

12th & Wyandotte 1/2 Block from New Auditorium

Rates \$2.00 and up

H. C. KYLE, Manager

**Drawings National Intercollegiate Basketball Championship Tournament
LOWER BRACKET**



**BUY AND SAVE AT
GATEWAY**
Sports Center of Kansas City

14th and Main 524 Minn.

Welcome To Kansas City

Wm. E. Burnett Meat Market


541 Main St. Kansas City, Mo.

Our Products Are Sold at the Auditorium

Squire Electric Co.
*Electrical Engineers
and Contractors*

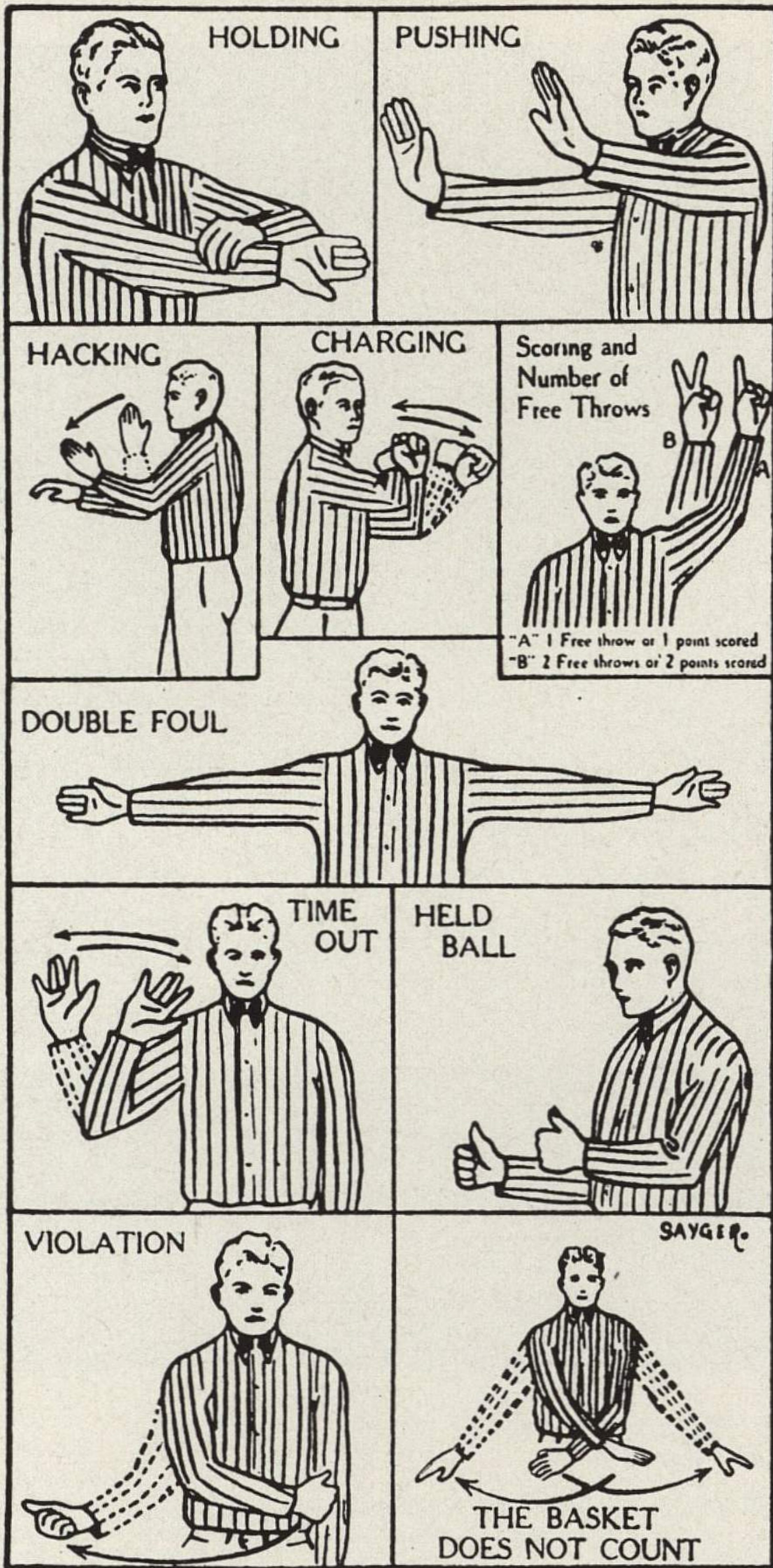
401 Wyandotte Phone Victor 8709

*Good for
Life*



On Sale
at the
Auditorium

Eagle-Dr. Pepper Bottling Co.



FOLLOW THE
REFeree's DECISIONS

Diagram
to the Left
Shows Referee's
Hand Signals
and
Their Meanings

*Watch Your
Lucky Number*

If your number is called at the
finish of any game, you will
receive the

**Last-Bilt
Basketball**

that has been used in play.
We will be pleased to have it
autographed by the winning
team.

LUCKY NUMBER

No 16511



ENDORSED BY
LEW ANDREAS,
SYRACUSE UNIVERSITY
BASKETBALL COACH

Lew Andreas

**COLLEGIATE
Basketball Shoes**

OFFER

- More Ankle Support with a Revolutionary Canvas Upper.
- Extra Heel Protection with a Double Sponge Cushion Heel Seat.
- Better Traction with a Live Rubber Moulded Suction Cup Outsole.

BEACON FALLS RUBBER FOOTWEAR

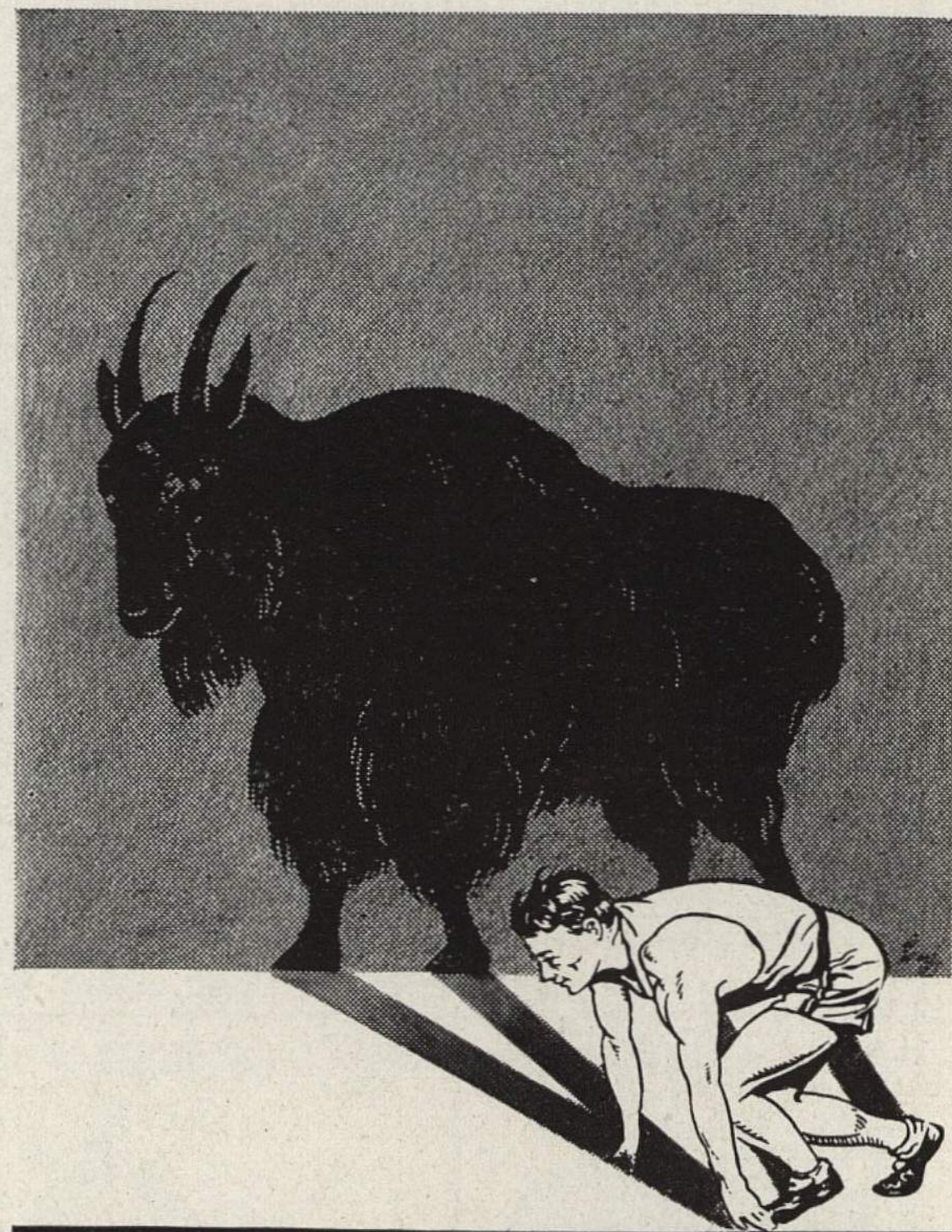
BEACON FALLS, CONN.



ELASTICITY

THESE ARE BUT
TWO
 OF THE MANY
FEATURES
 TO BE FOUND
 IN

Pyra-Seal
Floors



TRACTION

Sure-footed speed is the reward of the PYRA-SEAL treated floor. This better floor seal permits lightning fast play with slip-proof safety. An improvement to any school or gymnasium because of its smart appearance. A budget favorite with the Board because of its long, economical wear and minimum of maintenance cost.

Pyra-Seal Protection Pays for Itself

PYRA-SEAL makes gymnasium floors look better and wear longer. It seals the pores in the wood and ties the surface fibres into an integral whole—dries to a smooth, hard, lustrous yet non-slip finish that does not chip, crack or peel. Resists acids, alkalis, alcohol, ink, etc. Out-wears ordinary finishes many times over. Why take chances, when PYRA-SEAL gives certain protection?

*Learn How Pyra-Seal Can Solve Your Floor
 Maintenance Problems*

WRITE FOR FREE CATALOG—TODAY

Approved

and recommended by the
 Maple Flooring Mfrs. Assn.,
 National Oak Flooring Mfrs.
 Assn., and specified by lead-
 ing Architects.

VESTAL CHEMICAL LABORATORIES, INC.

NEW YORK

SAINT LOUIS



★

Southwestern College

Winfield, Kansas

1939 Champion

★

Top Row—Lloyd Tucker, Russell Briar, John Deckert, Ralph Smith, Price Fugit.

Middle Row—Edgar Hinshaw, Cecil Porter, Don Cooper, Director of Athletics, George Gardner, Coach, Don Bryant, Harold Stevens.

Seated—Chas. Grigsby, Marvin Tucker, Harold Bratches, Olin Tucker, Carle Dix.

★

Central Missouri State Teachers College

Warrensburg, Missouri

1938 Champion

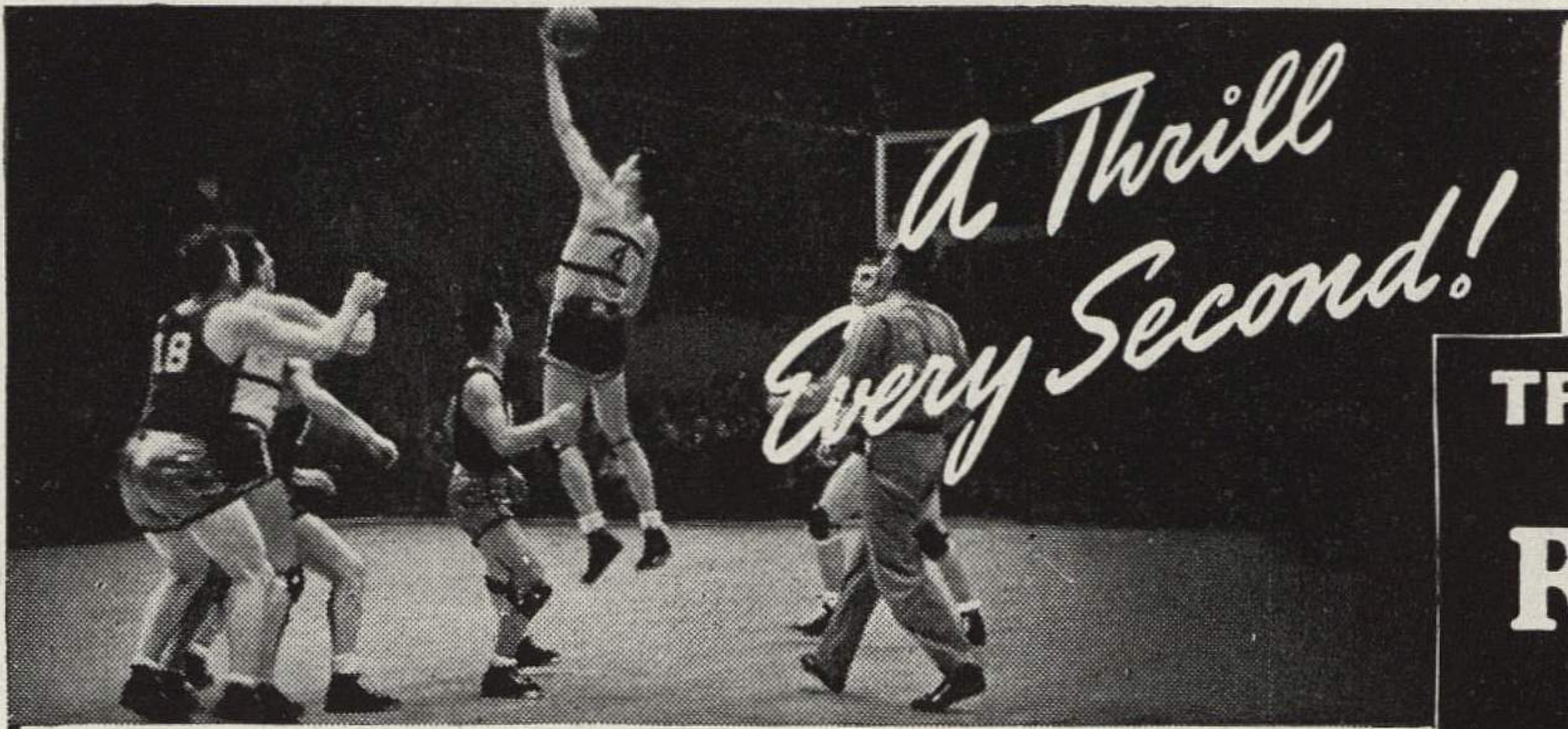
★



Bottom Row, left to right—Marvin Blaine, Harold Howard, Howard Schneider.

Second Row, left to right—Bob Foster, Pat Kay, Al Schrik, Harry Heller.

Top Row, left to right—Earl Keth, Fred Troutwine, Jim Gibbs, Coach Tad Reid.



*A Thrill
Every Second!*

To try before you buy: Mail this ad with name and address to Rum & Maple Tobacco Corp., 108 East 16th St., N. Y., Dept. 93, and generous sample will be sent **FREE**.

There's a thrill every second, too, when you smoke Original Rum & Maple Blend 53 . . . a superb mixture of choice sun-cured Bright Virginia, North Carolina and Syrian Latakia tobaccos (no burley), blended in the English tradition —infused with genuine Jamaica Rum and pure Vermont Maple Sugar. Rare smoking quality plus distinctive flavor and aroma have made Original Rum & Maple Blend 53, America's No. 1 Fine Pipe Tobacco. It's sold here in the garden. Buy it; try it and experience a thrill every second! The Original always has this name . . . RUM & MAPLE TOBACCO CORP., N. Y.

TRY *Original*
RUM and MAPLE
Reg. U.S. Pat. Off.
PIPE MIXTURE
BLEND 53

**ASK THE
VENDOR
... HE
HAS IT!**



NOW
25¢
was 70¢

TO THE NEXT TOWN OR ACROSS THE CONTINENT



America's Finest Highway Transportation

After the Games

Enjoy One or ALL of Kansas City's
MOST POPULAR SPOTS

● **CABANA**
Colorful Cocktail Lounge

● **ABOUT TOWN**
Kansas City's Smart
New Coffee Shop

● **TROPICS**
Atmospheric
Cocktail Retreat

*A 4 Star Program
of Entertainment*

★ **BEE
SARCHE**

"Lovely Lady of Songland"

★ **VIRGINIA
BARRIE**

"The Voice of Personality"

★ **ALBERTA**
*"Crown Princess of the
Novachord"*

★ **RUTH
ROYAL**

*"Top Lady of the Organ"
(Tropics Only)*

Sarche, Barrie and Alberta appear
in both the Cabana and Tropics

HEADQUARTERS FOR
THE TOURNAMENT

HOTEL Phillips
20 Stories of Comfort

C. E. Phillips, Managing Director

● National Intercollegiate Basketball Championship Tournament of the United States.....

District Chairmen

DISTRICT INCLUDES	DISTRICT CHAIRMAN
WASHINGTON IDAHO	LEO NICHOLSON, Athletic Director, Ellensburg College of Education, Ellensburg, Washington.
OREGON	JEAN EBERHART, Athletic Director, Southern Oregon Normal School, Ashland, Oregon.
CALIFORNIA	JAMES NEEDLES, Basketball Coach, Loyola University, Los Angeles, California.
UTAH NEVADA	FLOYD MILLET, Basketball Coach, Brigham Young University, Provo, Utah.
MONTANA WYOMING	JOHN BREEDEN, Basketball Coach, Montana State, Bozeman, Montana.
COLORADO	JO E. IRISH, Graduate Manager, Colorado College, Colorado Springs, Colo.
ARIZONA NEW MEXICO	S. M. CLARK, Athletic Director, New Mexico Normal University, Las Vegas, New Mexico.
TEXAS	AL BAGGETT, Athletic Director, West Texas State, Canyon, Texas.
OKLAHOMA	HENRY P. IBA, Athletic Director, Oklahoma A. & M. College, Stillwater, Okla.
KANSAS	D. ERRICKSON, Basketball Coach, Washburn College, Topeka, Kansas.
NEBRASKA	A. G. WHEELER, Athletic Director, Nebraska State Teachers College, Peru, Nebr.
SOUTH DAKOTA NORTH DAKOTA	LESTER BELDING, Athletic Director, Dakota Wesleyan University, Mitchell, South Dakota.
MINNESOTA	J. W. HUTTON, Athletic Director, Hamline University, St. Paul, Minnesota.
WISCONSIN	LOUIS E. MEANS, Athletic Director, Beloit College, Beloit, Wisconsin.
IOWA	R. G. ROGERS, Basketball Coach, Morningside College, Sioux City, Iowa.
MISSOURI	E. F. KIMBRELL, Athletic Director, Westminster College, Fulton, Mo.
ARKANSAS	W. B. WOODSON, Athletic Director, State Teachers College, Conway, Arkansas.
LOUISIANA	H. LEE PRATHER, Athletic Director, Louisiana State Normal College, Natchitoches, Louisiana.
MISSISSIPPI	A. D. DICKSON, Athletic Director, Mississippi Delta State Teachers College, Cleveland, Mississippi.
ILLINOIS	RAY HANSON, Athletic Director, Western Illinois State Teachers College, Macomb, Illinois.
INDIANA	ROY E. TILLOTSON, Athletic Director, Franklin College, Franklin, Indiana.
OHIO	ROY CLIFFORD, Basketball Coach, Western Reserve University, Cleveland, Ohio.
MICHIGAN	NEWMAN ETELL, Basketball Coach, Wayne University, Detroit, Michigan.
KENTUCKY TENNESSEE	A. F. RUPP, Basketball Coach, University of Kentucky, Lexington, Kentucky.
GEORGIA ALABAMA FLORIDA	JOE DOUGHERTY, Basketball Coach, Mercer University, Macon, Georgia.
NORTH CAROLINA SOUTH CAROLINA	VIRGIL YOW, Athletic Director, High Point College, High Point, North Carolina.
VIRGINIA	GORDON C. WHITE, Athletic Director, Roanoke College, Salem, Virginia.
WEST VIRGINIA	A. F. ROHRBOUGH, Athletic Director, Glenville State Teachers College, Glenville, West Virginia.
MARYLAND DELAWARE WASH., D. C.	CHARLES E. MILLER, Basketball Coach, Baltimore University, Baltimore, Maryland.
PENNSYLVANIA	CHARLES R. DAVIES, Basketball Coach, Duquesne University, Pittsburgh, Pa.
NEW YORK NEW JERSEY	CLAIR F. BEE, Athletic Director, Long Island University, Brooklyn, N. Y.
MAINE NEW HAMPSHIRE VERMONT RHODE ISLAND CONNECTICUT MASSACHUSETTS	MEL A. COLLARD, Basketball Coach, Boston University, Boston, Mass.



FRANCESCA SIMS
of TEXAS
Chesterfield Girl of the Month

A roundup of all you
want in a cigarette

CHESTERFIELD

they're **COOLER**
they **TASTE BETTER**
they're **DEFINITELY MILDER**



These are the things you get from Chesterfield's right combination of the world's best cigarette tobaccos.

Make sure of more smoking pleasure . . . make your next pack Chesterfield and you'll say "They give me just what I want . . . **THEY SATISFY.**"