

THE KANSAS CITY STAR, FRIDAY, DECEMBER 2, 1938.

ATHLETIC TALK ON

Conferences of Missouri and Kansas in Annual Conclave Here.

A CLOSED VALLEY MEET

Affairs of the Loop Are Taken Up at Executive Session Today.

CAGE COACHES TO RULES

Interpretation Meetings Are the Order of Program for Tonight.

Athletic conferences of Missouri and Kansas as well as the Big Six and Missouri Valley conferences were sending representatives to the annual winter meetings here today.

This morning the Missouri Valley conference began a session behind closed doors. Affairs incidental to the running of the conference were to be discussed.

At 7:30 o'clock tonight basketball coaches are to hold a rules interpretation meeting. This group then meets tomorrow morning with the basketball coaches of the Big Six.

The Missouri Intercollegiate Athletic association also is scheduled for a meeting tonight. Tomorrow morning it will arrange its 1939 football schedule.

An open basketball rules meeting will be held at 2 o'clock tomorrow afternoon at the Hotel Continental. All coaches and officials are invited.

Mo Valley Conf Interpretation

Extend court 2 feet on each end line under
option of rule change

Will not play in Quarters

Adapt 5 ply Low Ball Ball

Refused to adopt white ball

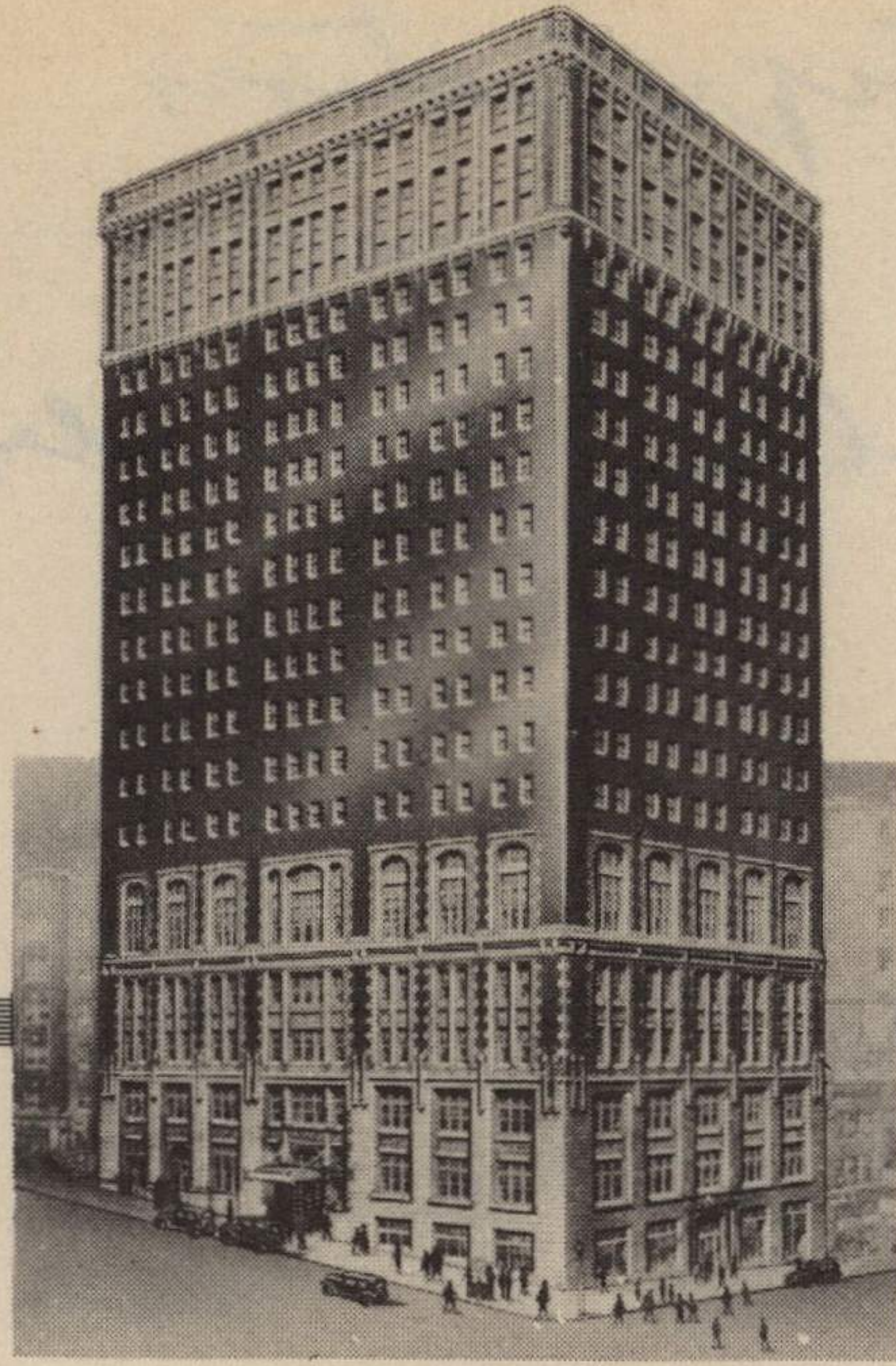
Refused to sanction No-11-0-five goals

Revised former rule that on a charged time
and a substitution within 30 seconds would
nullify time out

Rule 10 Sec 1 - Word "near" 12 feet line

Jump Balls as provided in rules. Women
use 3 coils

E. Hickey



350 ROOMS . . . 350 BATHS
ALL ABOVE 10TH FLOOR

SWIMMING POOL

ROOF GARDEN

HOTEL KANSAS CITIAN

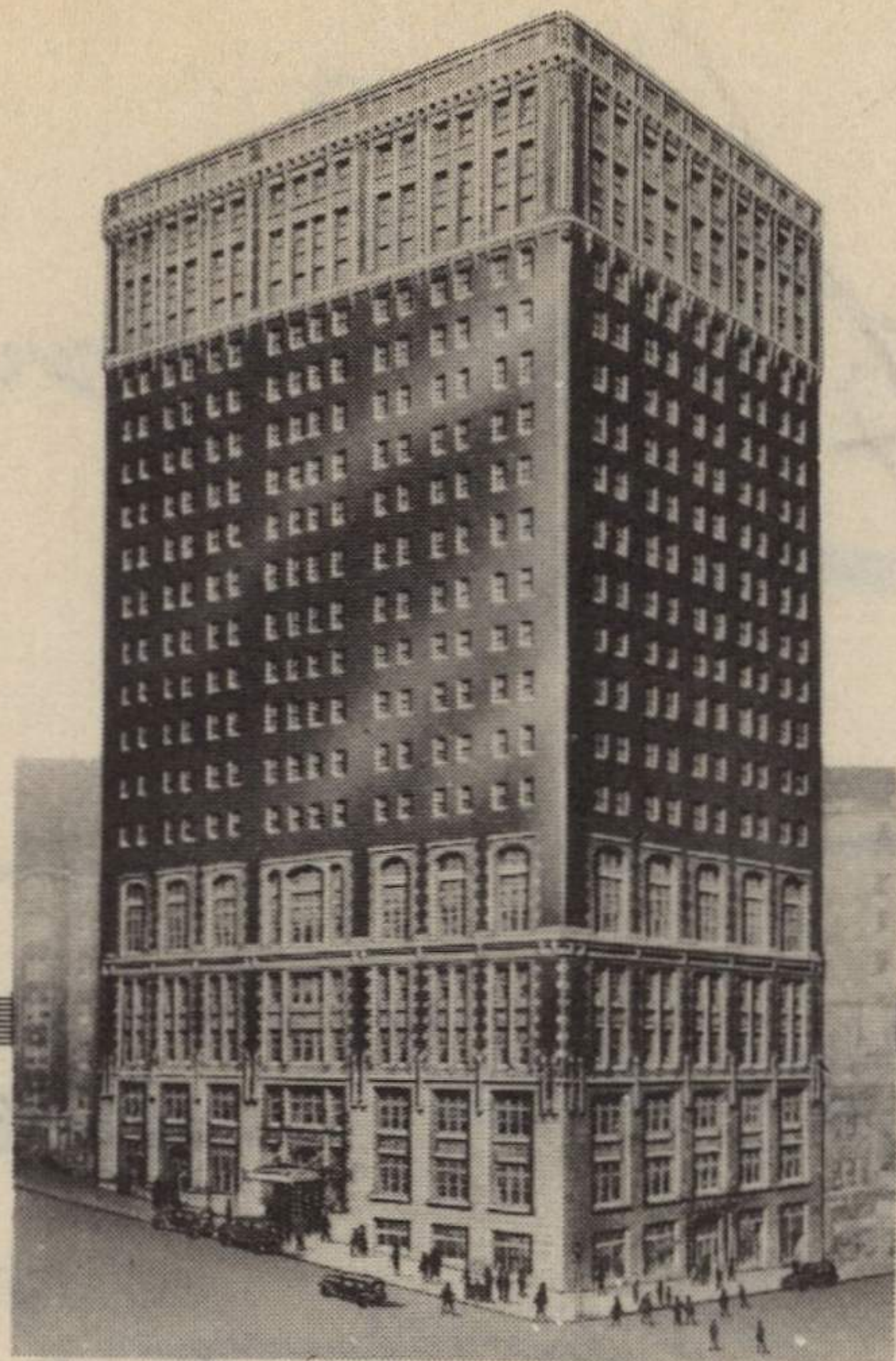
ELEVENTH AND BALTIMORE

Kansas City, Mo.

ROBIN McGEORGE
MANAGER

12' - lane. on each of bound
plays behind basket.

Caution so keeper not
to substitute a man
after a goal or after a
successful free throw.
If the keeper inadvertently
blows his horns time out
shall not be charged
unless the substitute
goes on the floor.



350 ROOMS . . . 350 BATHS
ALL ABOVE 10TH FLOOR

SWIMMING POOL

ROOF GARDEN

HOTEL KANSAS CITIAN

ELEVENTH AND BALTIMORE

Kansas City, Mo.

ROBIN McGEORGE
MANAGER

1937

BASKETBALL RULES INTERPRETATIONS OF THE BIG SIX

A. When a basket is made the official will signal the basket by raising his arm and showing two fingers.

B. All held balls are to be put in play in the nearest of the three circles. If there is doubt as to which is the nearest circle, the center is the one used.

C. The official shall place his hand on the back of the player fouled and raise the other hand.

D. Rule 8, Section 8, under Note relative to division line, the following is an attempt to make the rule clear:

If a player passes the ball from his back court to a team-mate who is touching or straddling the division line the ball has been passed into the front court. If a player passes the ball from his front court to a team-mate who is touching or straddling the division line the ball has been passed into the back court. In other words the division line is in the front court or back court according to the position from which the ball is thrown. While he is in legal possession in such position the division line is a neutral area and the player's court location does not change because of any pivot until such time as both feet may touch the floor while entirely on one side of the line. Thereafter any stepping on or over the line changes the court location of the player.

E. We want to call attention to the Note to Officials under Rule 10, Section 1 which is as follows:

"Whenever a ball is regarded to a team out of bounds from its front court area the official must hand the ball immediately to the player who is to put it into play. If there is any confusion or misunderstanding among the players as to the decision the official should obtain possession of the ball and not permit the player entitled to it to play it until both teams have had a chance to recover their positions.

F. Relative to the Substitution Rule. Substitution is permitted after a goal or made free throw. The procedure is as follows: The substitute reports to the scorer, the scorer sounds his horn loudly and quickly, the referee upon hearing the horn blowing his whistle and recognizing the substitute, permitting him to come on the floor. The point we are trying to make is this: That the substitute should not go on the floor in these two situations until he has been recognized by the referee. We would like to impress upon the officials that they warn the timekeepers to make these substitutions before the team that has been scored upon has had an opportunity to put the ball into play. If however, the time-keeper's horn has sounded after the team scored upon has put the ball into play, no play by the team scored upon can follow until the substitution is complete.

1937
BASKETBALL INTERPRETATIONS OF THE BIG SIX CONFERENCE

I. General Suggestions:

- a. Officials should notify athletic authorities upon their arrival in town.
- b. Starting time of games will be as follows:
 - 1) Iowa State - 7:15 during the week; 7:30 on Fri. and Sat.
 - 2) Kansas - 7:30 p.m.
 - 3) Kansas State - 7:30 p.m.
 - 4) Oklahoma - 7:30 p.m.
 - 5) Missouri - 8:00 p.m.
 - 6) Nebraska - 8:00 p.m.
- c. The home team is to wear white uniforms. This includes shirt and pants. The visitors are to dress in their school colors.
- d. A copy of the official box score shall be mailed to the Secretary of the Big Six conference.
- e. The visiting team is to send to the home team at least eight days in advance of the game, the names and numbers of all players who will make the trip.
- f. Each school is to exchange with all others squad information primarily for pre-game publicity. This information should include number, name, position, height, weight, home town, year on the varsity, men lost by graduation, veteran letter men returning, and any team records which may add to newspaper interest.
- g. The type of ball used by each school is as follows:
 - 1) Iowa State - Rawlings Naismith Lace.
 - 2) Kansas - Wilson, Spalding and Rawlings, Lace.
 - 3) Kansas State -
 - 4) Missouri - Rawlings Naismith Lace.
 - 5) Nebraska - Wilson Laceless.
 - 6) Oklahoma - Rawlings Naismith Lace.
- h. The coaches have officially endorsed the Bash-O-Lite goals for the Big Six. If any school does not care to use these goals the home team will install regular goals when that team is playing there.

II. Rules Interpretations:

- a. When a basket is made the official will signal the basket by raising his arm and showing two fingers.
- b. All held balls are to be put in play in the nearest of the three circles. If there is doubt as to which is the nearest circle, the center is the one used.
- c. The official shall place his hand on the back of the player fouled and raise the other hand.
- d. Rule 8, Section 8, under Note relative to division line, the following is an attempt to make the rule clear:

If a player passes the ball from his back court to a team-mate who is touching or straddling the division line the ball has been passed into the front court. If a player passes the ball from his front court to a team-mate who is touching or straddling the division line the ball has been passed into the back court. In other words the division line is in the front court or back court according to the position from which the ball is thrown. While he is in legal possession in such position

the division line is a neutral area and the player's court location does not change because of any pivot until such time as both feet may touch the floor while entirely on one side of the line. Thereafter any stopping on or over the line changes the court location of the player.

e. We want to call attention to the Note to Officials under Rule 10, Section 1 which is as follows:

"Whenever a ball is rewarded to a team out of bounds from its front court area the official must hand the ball immediately to the player who is to put it into play. If there is any confusion or misunderstanding among the players as to the decision the official should obtain possession of the ball and not permit the player entitled to it to play it until both teams have had a chance to recover their positions.

f. Relative to the Substitution Rule. Substitution is permitted after a goal or made free throw. The procedure is as follows: The substitute reports to the scorer, the scorer sounds his horn loudly and quickly, the referee upon hearing the horn blowing his whistle and recognizing the substitute, permitting him to come on the floor. The point we are trying to make is this: That the substitute should not go on the floor in these two situations until he has been recognized by the referee. We would like to impress upon the officials that they warn the time-keepers to make these substitutions before the team that has been scored upon has had an opportunity to put the ball into play. If however, the time-keeper's horn has sounded after the team scored upon has put the ball into play, no play by the team scored upon can follow until the substitution is complete.

BIG SIX BASKETBALL SCHEDULE 1937-38

Jan. 7 KANSAS vs. Oklahoma at Lawrence

Jan. 8 Iowa State vs. Kansas State at Ames

Jan. 11 KANSAS vs. Kansas State at Manhattan

Jan. 14 Missouri vs. Nebraska at Lincoln

Jan. 15 Iowa State vs. KANSAS at Lawrence

Kansas State vs. Missouri at Manhattan

Jan. 17 Iowa State vs. Oklahoma at Norman

Jan. 19 KANSAS vs. Missouri at Columbia

Jan. 21 Iowa State vs. Missouri at Columbia

Jan. 22 Kansas State vs. Nebraska at Lincoln

Jan. 29 Iowa State vs. Nebraska at Ames

Jan. 31 Kansas State vs. Oklahoma at Norman

Feb. 2 KANSAS vs. Nebraska at Lawrence

Feb. 5 Iowa State vs. Missouri at Ames

Nebraska vs. Oklahoma at Norman

Feb. 7 KANSAS vs. Kansas State at Lawrence

Feb. 9 Nebraska vs. Oklahoma at Lincoln

Feb. 10 Kansas State vs. Oklahoma at Manhattan

Feb. 12 Iowa State vs. Kansas State at Manhattan

Missouri vs. Nebraska at Lincoln

Feb. 14 Iowa State vs. Nebraska at Lincoln

Feb. 18 KANSAS vs. Oklahoma at Norman

Feb. 19 Kansas State vs. Missouri at Columbia

Feb. 21 Iowa State vs. KANSAS at Ames

Kansas State vs. Nebraska at Manhattan

Missouri vs. Oklahoma at Norman

Feb. 26 Iowa State vs. Oklahoma at Ames

KANSAS vs. Nebraska at Lincoln

Feb. 28 Missouri vs. Oklahoma at Columbia

Mar. 3 KANSAS vs. Missouri at Lawrence

1937-1938 "Big Six" Basketball Officials

Jan. 7	Oklahoma	at Lawrence	Cochrane	Volz
8	Kansas State	at Ames	HasBrouck	King
11	Kansas	at Manhattan	Quigley	Volz
14	Missouri	at Lincoln	Wulf	Carroll
15	Iowa State	at Lawrence	Mason	Peters
15	Missouri	at Manhattan	Lance	Wulf
17	Iowa State	at Norman	Lance	Bell
19	Kansas	at Columbia	Cochrane	Volz
21	Iowa State	at Columbia	House	Lance
22	Kansas State	at Lincoln	Quigley	Adams
29	Nebraska	at Ames	Winter	HasBrouck
31	Kansas State	at Norman	Old	Lance
Feb. 2	Nebraska	at Lawrence	Peters	Mason
5	Missouri	at Ames	Winter	HasBrouck
5	Nebraska	at Norman	Old	Carroll
7	Kansas State	at Lawrence	Quigley	Volz
9	Oklahoma	at Lincoln	Ca.	Cochrane
10	Oklahoma	at Manhattan	Carroll	Quigley
12	Nebraska	at Columbia	Wulf	Carroll
12	Iowa State	at Manhattan	Peters	Lance
14	Iowa State	at Lincoln	Carroll	Lance
18	Kansas	at Norman	Cochrane	Volz
18	Kansas State	at Columbia		Carroll
21	Nebraska	at Manhattan	Quigley	Carroll
21	Kansas	at Ames	Mason	Volz
21	Missouri	at Norman	Old	Larson
26	Kansas	at Lincoln	Quigley	Mason
26	Oklahoma	at Ames	Wulf	Winter
28	Oklahoma	at Columbia		
Mar. 3	Missouri	at Lawrence	Cochrane	Volz

BASKETBALL SCHEDULE

1937-1938

20824

Big Six Conference Games

Jan. 7	Oklahoma	@ Lawrence	Cochrane - Volz
Jan. 11	Kansas State (A & B games)	@ Manhattan	Quigley - Volz
Jan. 15	Iowa State	@ Lawrence	Mason - Peters
Jan. 19	Missouri	@ Columbia	Cochrane - Volz
Feb. 2	Nebraska	@ Lawrence	Peters - Mason
Feb. 7	Kansas State (A & B Games)	@ Lawrence	Quigley - Volz
Feb. 18	Oklahoma	@ Norman	Cochrane - Volz
Feb. 21	Iowa State	@ Ames	Mason - Volz
Feb. 26	Nebraska	@ Lincoln	Quigley - Mason
Mar. 3	Missouri	@ Lawrence	Cochrane - Volz

Non-Conference Games

Dec. 3	Varsity-Fresh	@ Lawrence	Quigley - Quigley
Dec. 6	Doane College	@ Lawrence	Quigley - Quigley
Dec. 7	Ottawa University (A & B Games)	@ Lawrence	
Dec. 10	Ottawa University	@ Ottawa	
Dec. 13	Baker University (A & B Games)	@ Lawrence	Quigley - Quigley
Dec. 14	Southwestern (A & B Games)	@ Lawrence	Quigley - Quigley
Dec. 15	Morningside	@ Lawrence	Quigley - Quigley
Dec. 16	Washburn (A & B Games)	@ Topeka	
Dec. 21	Southwestern (A & B Games)	@ Winfield	
Dec. 29	Drake University	@ Des Moines	
Jan. 4	Washburn (A & B Games)	@ Lawrence	

BASKETBALL OFFICIALS

Big Six Conference - 1937-38

<u>Name</u>	<u>Address</u>	<u>Games</u>
Adams, Ernest	1419 First Nat. Bk. Bldg., Omaha, Neb.	1
Bell, Alvin	3711 Markham, Little Rock, Ark.	1
Carroll, Parke	Journal Post, Kansas City, Mo.	8
Cochrane, Chill	Kansas State College, Manhattan, Ks.	5
HasBrouck, Henry	Y.M.C.A., DesMoines, Ia.	3
King, Clyde	New Hampton, Ia.	1
Lance, John	Pittsburgh Tehrs. Coll., Pittsburgh, Ks.	6
Larson, Carl	2020 E. 13th, Tulsa, Oklahoma	1
Mason, Pat	Rockhurst Jr. Coll., Kansas City, Mo.	4
North, Jack	Register-Tribune, DesMoines, Ia.	0
Old, John B.	609 Beacon Life Bldg., Tulsa, Okla.	3
Peters, Reeves R.	Northeast High School, Kansas City, Mo.	1
Quigley, E. C.	St. Mary's Coll., St. Mary's, Ks.	8
Volz, M. G.	First Trust Co., Lincoln, Nebr.	7
Winter, Fred	Independent School Dist., Cedar Rapids, Ia.	3
Wulf, John	17 East 39th St., Kansas City, Mo.	8

August 29, 1938

Coach W. H. Browne,
University of Nebraska,
Lincoln, Nebraska.

Dear Harold:

Our office has been closed on account of vacation, which accounts for our failure to respond more promptly to your good letter of the 25th.

I would be very happy to meet with the group in Kansas City Friday and Saturday to make up the 1939-40 schedules if such a thing would be possible.

I am sending this special delivery, trusting that the other answers will arrive in time for you to notify us by wire, if necessary, to report Friday for schedule making.

Regretting the delay, I am

Sincerely yours,

Director of Physical Education,
Varsity Basketball Coach.

FCA:AH

THE UNIVERSITY OF NEBRASKA
LINCOLN

DEPARTMENT OF
INTERCOLLEGIATE ATHLETICS
OFFICE OF THE DIRECTOR

August 25, 1938.

Dr. F. C. Allen, University of Kansas ✓
Mr. George Edwards, University of Missouri
Mr. Louie Menze, Iowa State College
Mr. Frank Root, Kansas State College
Mr. Bruce Drake, University of Oklahoma
Basketball Coaches, "Big Six" Conference

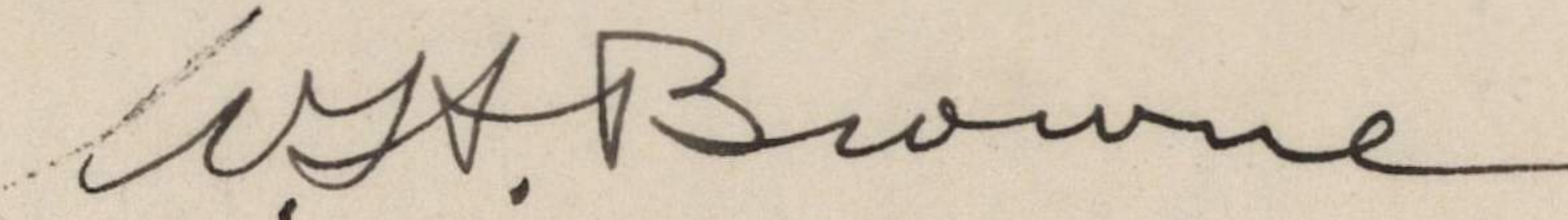
Gentlemen:

At our Conference meeting in Lincoln last May, it was unanimously agreed that we should get together this fall in Kansas City during the football officials' meeting and try and effect our 1939-40 schedules.

I am writing you to see if this idea can be carried through, and would like to propose that we meet Friday afternoon or night, September 2nd, at the Kansas City Athletic Club for the purpose of drafting next year's basketball schedule. We could do this and remain over the next day for the football rules interpretation meeting and have a general get-together to swap yarns concerning our summer vacations.

Your immediate reaction will be appreciated.

Sincerely yours,



W. H. Browne,
Basketball Coach.

11-25-14

Louis Menze Consideration for Big Six.

~~Big 6 allows substitute by charged time out.
Allowance of substitution by
either team after field goal
has been made.~~

Regular Goal for Kansas.

This interpretation meeting
concerns itself largely with
collegiate basket ball rules.
It is obvious that the N. S. ^{State}
Ath Assn. control their
own rules interpretations.

Rules Body.

Some rules are made certain areas.

Lawrence, Kansas.
November 23, 1938.

Mr. Louis E. Menze,
Coach of Basketball,
Iowa State College,
Ames, Iowa.

Dear Louie:

I thought I should write you again so that there would be no mix up in our arrangement for our meeting in Kansas City on Friday evening, December 2, after supper. Why could we not either eat together or meet say at 7 o'clock for our Big Six coaches meeting where we agree on interpretations, and so forth?

As chairman of the Fifth District Rules Committee, I naturally wanted to have the Missouri Valley in on the conference, so I have conferred with Henry Iba and Artie Eilers. I believe our coaches discussed a date that will not conflict with the Missouri Valley coaches Saturday morning, as we have our meeting on Friday night.

If I am correct in these suppositions, then I have passed on the correct information to Artie Eilers, and he has passed that on to his directors and coaches and cleared the way for our open rules interpretation meeting Saturday morning at 10 o'clock.

I am sending you a copy of our newsletter which gives our set up for our clinic here at the University on Saturday afternoon, starting at 2:30. Of course we would be glad to have any of the coaches of the Big Six come down and visit us, but I imagine most of them will have work of their own to do and will want to hurry back.

The reason I am writing this letter is to get you to have George Veenker incorporate our doings in his letter of instruction which he will send out to the directors.

Gwinn Henry told me that Tom Stidham had asked that they have their meeting at Norman next Friday and Saturday down there, but of course our basketball coaches will have to meet in Kansas City.

I thought I could get you to give the necessary information to George. I will appreciate it if you will do so.

With all good wishes, I am

Very sincerely yours,

FGA:AH

Chairman, Fifth District, N.C.A.A.

November 30, 1938.

Mr. Louis E. Menze,
Iowa State College,
Ames, Iowa.

Dear Louie:

I really did believe we agreed to meet the night before the open rules. That was the definite understanding of all the coaches, and to confirm that feeling I am enclosing copies of letters I have just received from Brude Drake and Harold Browne. I am sorry that your schedule interfered with that arrangement.

Sincerely yours,

Director of Physical Education,
Varsity Basketball Coach.

FCA:AH

IOWA STATE COLLEGE
OF AGRICULTURE AND MECHANIC ARTS
AMES, IOWA

DEPARTMENT OF PHYSICAL EDUCATION
FOR MEN

November 28, 1938

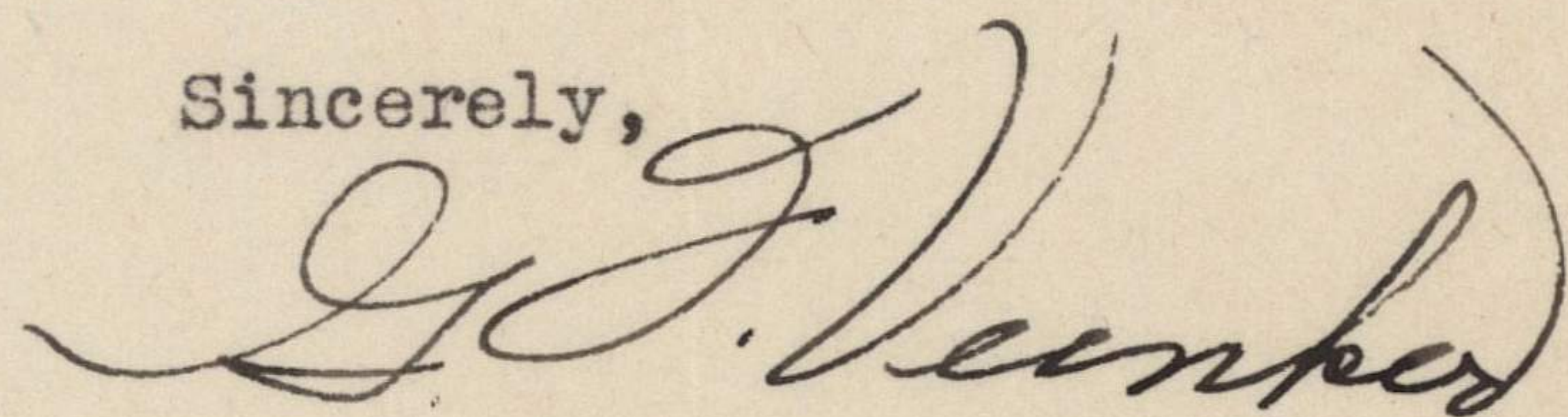
Dr. F. C. Allen
Basketball Coach
University of Kansas
Lawrence, Kansas

Dear Doc:

Because two of the Big Six schools are playing games Saturday night, December 3, it has been requested that the basketball coaches hold their meeting at a breakfast at 8 o'clock Saturday morning at the Hotel Kansas Citian. The open rules interpretation meeting will be held at 10 o'clock instead of the customary 2 o'clock meeting.

I trust this meets with the approval of all of you.

Sincerely,



G. F. Veenker, Secretary
Big Six Directors

GFV:JH

THE UNIVERSITY OF NEBRASKA
LINCOLN

DEPARTMENT OF
INTERCOLLEGIATE ATHLETICS
OFFICE OF THE DIRECTOR

November 28, 1938

Dr. Forrest C. Allen
Basketball Coach
University of Kansas
Lawrence, Kansas

Dear Dr. Allen:

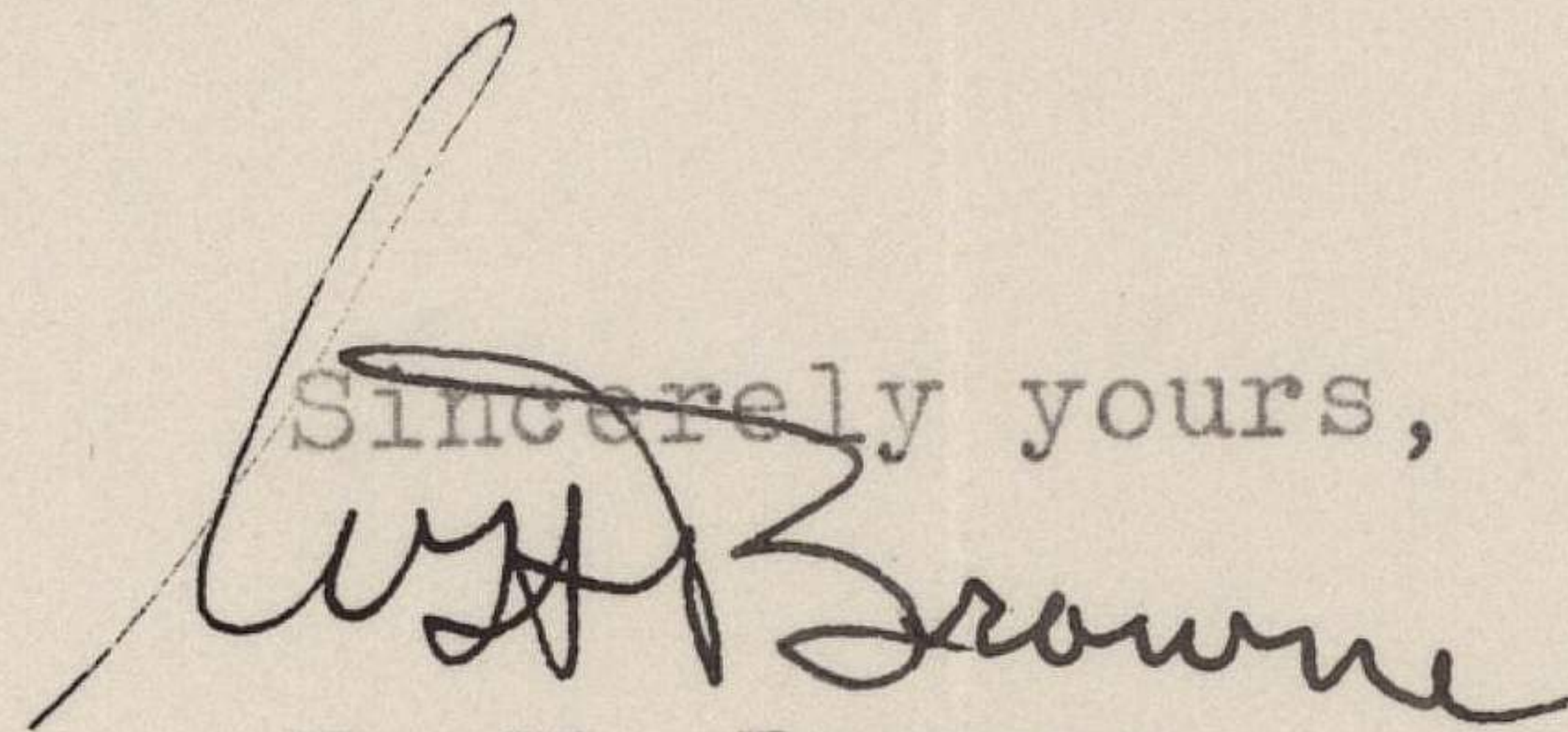
Many thanks for your letter of November 23rd, and the invitation to attend the basketball clinic and see your game December 3rd. I am going to try to be there, as we are staging a similar event December 9th and 10th, and I know of no better place to secure ideas on basketball than at the University of Kansas under your supervision.

I presume you had a letter from George ~~V~~eenker, announcing the rules meeting for Saturday morning, December 3rd. ~~And~~ also assuming that you will conduct the open meeting for officials at 2:00 o'clock that afternoon.

I was hoping the basketball coaches would get together on Friday night and have the interpretation meeting Saturday morning, which would leave us all free to return home at an earlier date ~~on~~ attend a clinic such as yours. If there is any way you think of that we could possibly change this meeting to Friday night, I will be glad to render any assistance possible.

Looking forward to a visit with you this week-end, I
am,

Sincerely yours,



W. H. Browne
Head Basketball Coach

WHB:GT

The University of Oklahoma
Norman, Oklahoma

PHYSICAL EDUCATION FOR MEN

November 28, 1938

Mr. Forest C. Allen
Director of Phy. Ed.,
University of Kansas
Lawrence, Kansas

Dear Dr. Allen:

I enjoyed your newspaper pamphlet regarding your clinic on December 3rd. If I possibly can, I plan to see your out-fit in action.

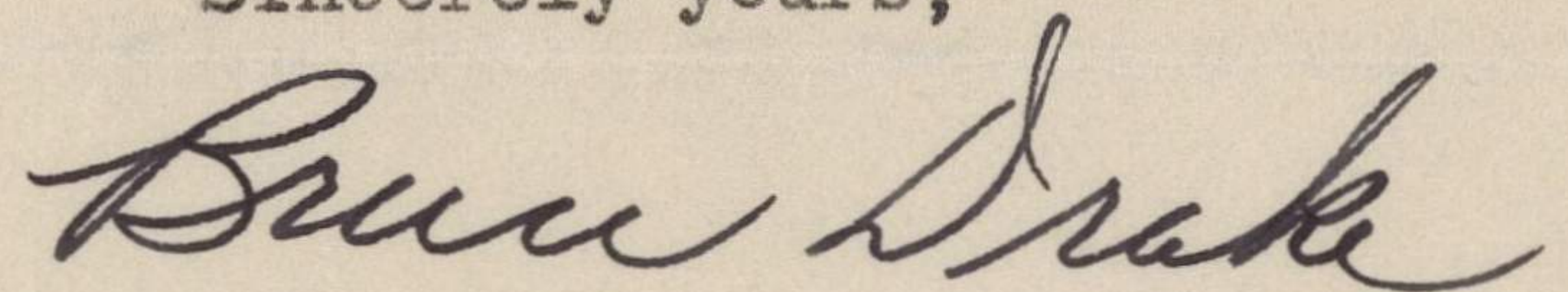
We would be glad to accommodate your basketball men on the night of December 21st or 22nd. We play the University of Arkansas on Dec. 21st and will be glad to extend to you and your squad an invitation to be my guests on that night.

In a letter I received from George Veenker, he states that the meeting will be Dec. 3rd at 9 A. M. o'clock, at the Hotel Kansas Citian. It was my understanding that we were to have a meeting Dec. 22nd prior to this joint meeting on Dec. 3rd. I myself plan to be in Kansas City at noon Dec. 2nd. I will be glad to meet that afternoon or that night.

I think it would be well for you to inform Veenker of this Dec. 2nd. meeting that we agreed upon in our Sept. meeting.

With best wishes for your continued success, I remain

Sincerely yours,



Bruce Drake
Basketball Coach

BD:RM

December 8, 1938.

Mr. L. E. Menze,
Basketball Coach,
Iowa State College,
Ames, Iowa.

Dear Louie:

The report of the Interpretations meeting looks all right to me. I have gone over it hastily, as we are making preparations to leave early in the morning for Stillwater.

Sincerely yours,

Director of Physical Education,
Varsity Basketball Coach.

FCA:AH

Dear Dad:

I will now please
copy the
attached sheets.
Love

BASKETBALL INTERPRETATIONS OF THE BIG SIX CONFERENCE

I. General Suggestions:

- a. Officials should notify athletic authorities upon their arrival in town.
- b. Starting time of games will be as follows:
 - 1) Iowa State - 7:15 during the week; 7:30 on Friday and Saturday.
 - 2) Kansas - 7:30 p.m.
 - 3) Kansas State - 7:30 p.m.
 - 4) Oklahoma - 7:30 p.m.
 - 5) Missouri - 8:00 p.m.
 - 6) Nebraska - 8:00 p.m.
- c. The home team is to wear white shirts. The visitors are to dress in their school colors.
- d. A copy of the official box score shall be mailed to the Secretary of the Big Six Conference.
- e. The visiting team is to send to the home team at least eight days in advance of the game, the names and numbers of all players who will make the trip.
- f. Each school is to exchange with all others squad information primarily for pre-game publicity. This information should include number, name, position, height, weight, home town, year on the varsity, men lost by graduation, veteran letter men returning, and any team records which may add to newspaper interest.
- g. the type of ball used by each school is as follows:
 - 1) Iowa State - Rawlings Naismith Lace.
 - 2) Kansas - Rawlings Naismith Lace.
 - 3) Kansas State - Rawlings Lace.
 - 4) Missouri - Rawlings Naismith Laceless.
 - 5) Nebraska - Wilson Laceless.
 - 6) Oklahoma - Rawlings Naismith Lace.

II. Rules Interpretations:

- a. When a basket is made the official will signal the basket by raising his arm and showing two fingers.
- b. The official shall place his hand on the back of the player fouled and raise the other hand.
- c. Relative to the optional rule on extending the end line two additional feet, Kansas will move the goals forward two feet to give the four feet behind the basket. All the other schools will move the end line back two feet.
- d. On balls which go out of bounds behind the basket a ~~two~~^{15 ft} foot lane shall be permitted in which to make the pass back into the court. This, of course, does not apply to out of bounds plays following a field goal.
- e. Rule 10, Section 1:

Whenever a ball is awarded to a team out of bounds from its front court area, the official must hand the ball immediately to the player who is to put it into play. If there is any question or misunderstanding among the players

as to the decision the official should obtain possession of the ball and not permit the player entitled to it to play it until both teams have had a chance to recover their positions.

f. It is recommended that score keepers be thoroughly acquainted with the rule that a substitute is not permitted to enter the game after a goal or a successful free throw. If the score keeper inadvertently blows his horn, time out shall be charged if the substitute goes on the floor. It is further emphasized that the captain is the only one who is permitted to take a charged time out for the purpose of a substitution after a goal or a successful free throw following a personal foul.