

11 March, 1946  
High School  
Great Bend, Kansas

Dr. F.C. Allen  
Basketball Coach  
University of Kansas  
Lawrence, Kansas.

Dear Dr. Allen:

Enclosed I am sending you a paper which gives a rather comprehensive account of the regional basketball tournament which was held here in Great Bend this past week. Great Bend upset the dope bucket by winning the "AA" bracket and beat two highly rated clubs in doing so.

On the back page of this sheet are the all-star selections of a local sports writer. I don't agree with him in every case, but he has included most of the good boys somewhere. I am taking the liberty of sending you this paper and marking the boys I think are potential college caliber. I tried to give consideration to size and competitiveness, plus the consideration of playing against competition which in many cases was inferior to their own ability.

I certainly wish you nothing but the very best in the game with the Oklahoma Aggies. I hope that they go back to the foothills convinced that this year is strictly Kansas.

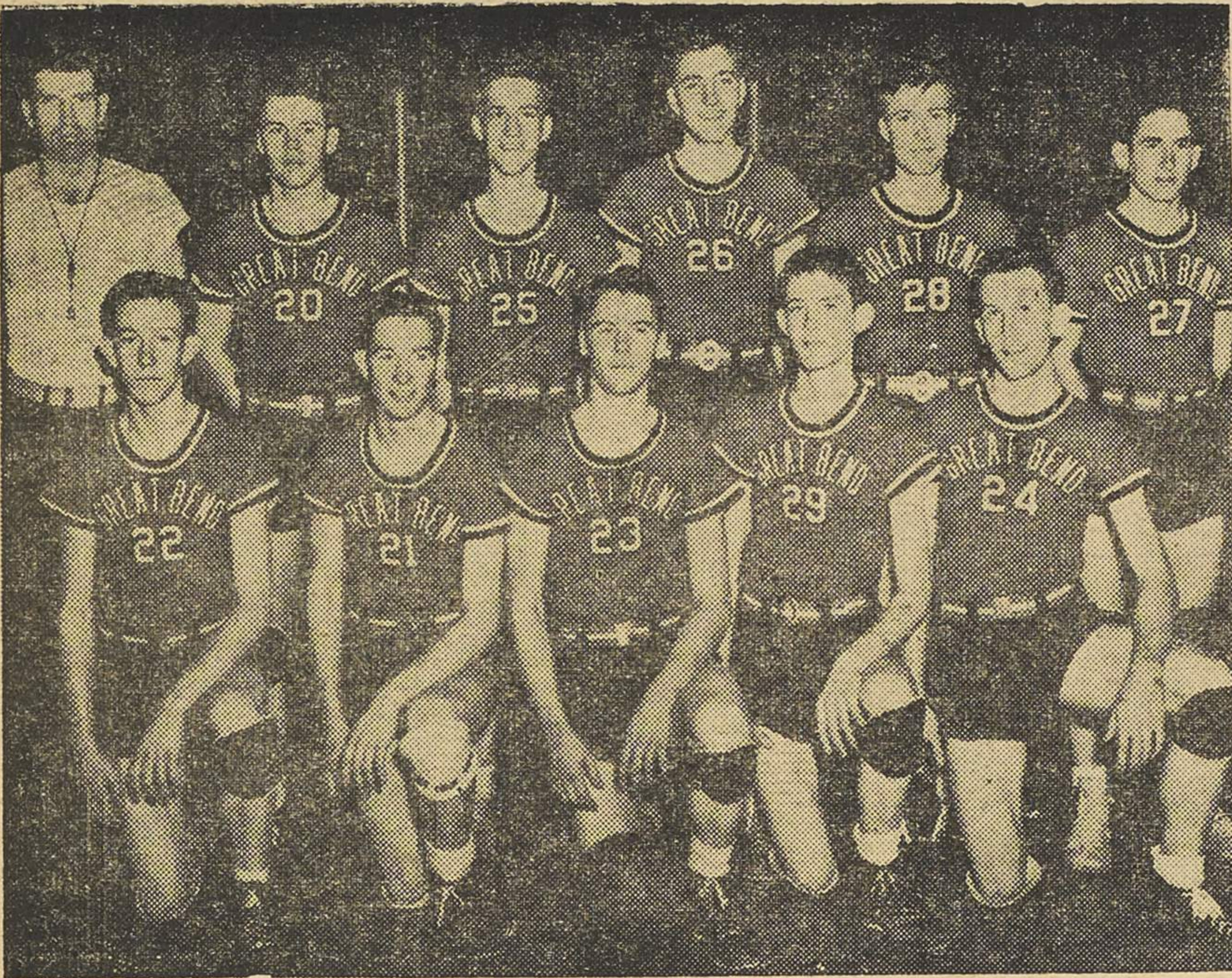
I hope that you are able to see some of these boys in the state tournaments throughout the state and are able to contact them in a satisfactory way.

With kindest regards as always, I am,

Appreciatively yours,



Gerald K. Barker



# GREAT BEND WINS

32 to 29

## GREAT BEND HERALD 5c

43rd YEAR

GREAT BEND, BARTON COUNTY, KANSAS, SATURDAY, MARCH 9, 1946

EXTRA

### HOISINGTON A TITLIST

Clicking on all five, the Hoisington H. S. Cardinals repeated as regional Class A champions in the second game tonight, winning 34 to 26 from Garden City despite a last minute rally by George Jones, colored star of the Buffaloes.

The Cardinals led all the way but the westerners made a game of it.

The running score:

Hoisington	Garden City
Harmon 2-0	Jones mft
Streck f 2-0	Vawter f
Hormon 4-0	Brennaman
Harmon mft 4-0	Jones f
	Oswalt
Boldenow 5-2	Jones f
	Oswalt
Harmon 7-4	Vawter f
Harmon 9-4	Jones f
Harmon 11-4	
Deutsch 13-4	

2nd Quarter

Streck f 13-5	Jones
Harmon mft 13-5	Jones f
Streck 14-5	Jones f
Boldenow f 14-6	Trebilcock
Ford 16-6	Oswalt
Harmon f 16-8	Vawter
Radke f 16-10	Brennaman
Harmon 18-10	
	Brennaman

3rd Quarter

Harmon 20-12	Jones
	Jones
Boldenow f 20-15	Leopold f
Boldenow 21-15	Jones mft
Streck 23-15	Vawter f
Streck f 23-15	Jones mft
Harmon 24-15	Vawter f
Streck 26-15	Leopold mft
Ford f 26-15	Leopold mft
Streck 28-15	

4th Quarter

Boldenow f 28-17	Oswalt
Boldenow 29-18	Trebilcock f
Deutsch 31-18	
Streck 32-18	Stenzil f
Ford f 34-18	
Ford f 34-19	Jones
Boldenow mft 34-19	Leopold f
	Jones
	Jones
	Jones
Boldenow f 34-26	Leopold mft

The box score:

Hoisington—34	G	Ft	F	Mg	Mft
30 Ford, f	2	0	2	9	0
39 Streck, f	3	2	3	2	0
38 Harmon	5	5	1	10	2
32 Boldenow, g	0	3	4	5	1
35 Deutsch, g	2	0	0	2	0
31 Radke, g	0	0	0	0	0
Totals	12	10	11	28	3
Garden City—26	G	Ft	F	Mg	Mft
26 Oswalt, f	3	0	0	5	0

29 Trebilcock, f	0	2	1	2	0
24 Jones, c	4	3	4	8	2
28 Vawter, g	0	1	3	6	0
23 Brennaman, g	2	1	0	13	0
21 Stenzil, f	0	0	1	0	0
22 Leopold, f	0	1	2	2	1
27 Guy, g	0	0	0	0	0
20 Roush, g	0	0	0	2	0
Total	9	8	11	38	3

By Quarters:

Hoisington	13	5	10	6—34
Garden City	4	8	3	11—26

### NICKERSON VICTORIOUS

Nickerson's Panthers, displaying the cool skill that gave them an undefeated home season, was simply too much for a scrappy Claflin team in the first game tonight, and the Reno countians won, 40 to 30.

With the victory goes the regional Class B championship and a sure bid to the state Class B tournament at Hutchinson next week.

The running score:

Nickerson	Claflin
0-2	Fairbairn
0-4	Blazek
Detter 2-4	
Welker 4-4	
Johnson 6-4	
	Blazek
Pallister 8-6	
Welker f 8-6	Steuder mft
Bruning 9-6	Lang f
Welker mft 9-6	Steuder f

2nd Quarter

Bruning 11-6	
Welker 12-6	Steuder f
Pallister f 12-6	Steuder mft
Welker 14-6	
Detter mft 15-6	Wolford f
	Lang f
	Wolford
Detter f 15-8	
Bruning 17-9	
Welker 19-9	
Johnson f 19-10	Blazek mft
Bruning f 19-11	Blazek mft
Bruning 21-11	Lang f
Bruning f 21-12	Lang

3rd Quarter

21-14	Fairbairn
33-14	Pallister
23-16	Steuder
23-17	Blazek mft
23-17	Lang f
23-18	Blazek mft
25-18	
26-18	Fairbairn f

### This Extra Edition Contains Complete Record of ALL GAMES

Saturday ----- Page 1  
 Wednesday ----- Page 7  
 Thursday ----- Pages 2-3-7  
 Friday ----- Page 6-8  
 Brackets ----- Page 8

27-18 Lang f  
 29-18 Welker  
 29-18 Bruning mft  
 29-18 Detter f

4th Quarter

Bruning mft 30-18	Lang f
	Blazek
30-20	Feaster f
31-20	Feaster f
33-20	Feaster f
33-20	Steuder
33-21	Webb f
33-23	
35-23	
35-25	Wolford mft
36-25	Feaster f
38-25	
38-27	Blazek
38-29	Feaster
39-29	Blazek f
39-30	Wolford mft
40-30	Wolford f
40-30	Blazek f
Final	

The box score:

Nickerson—40	G	Ft	F	Mg	Mft
11 Welker, f	6	2	1	15	2
12 Pallister, f	2	0	1	8	0
5 Bruning, c	4	6	2	5	4
3 Detter, g	1	1	2	1	1
8 Johnson, g	1	1	4	10	2
6 Engelland, f	0	0	0	1	0
7 Towse, f	0	1	0	0	0
9 Brittain, f	0	1	0	0	1
10 McKee, g	0	0	2	0	1
Totals	14	12	10	40	11
Claflin—30	G	Ft	F	Mg	Mft
12 Blazek, f	5	4	2	19	5
3 Wolford, f	0	4	1	9	1
5 Lang, c	1	1	5	1	0
6 Fairbairn, g	1	0	2	7	0
8 Steuder, g	1	1	2	4	2
7 Feaster, g	1	0	3	2	0
9 Webb, g	1	0	3	1	0
Totals	10	10	16	43	8

By Quarters:

Nickerson	9	12	8	11—40
Claflin	6	6	6	12—30

### Panthers AA Champions

Great Bend won the regional Class AA championship tonight, defeating Hutchinson 32 to 29 in a thrilling game that was close all the way.

An immense crowd witnessed the game, and hundreds more who were turned away after 6:15 listened to the broadcast. It was the first time Great Bend has ever won a regional tournament, and follows the recent winning of the Southwest League title for the first time.

Tom Hardy, former Great Bend boy, was high point scorer of the game with 14 points before fouling out in the last quarter. Captain Bill Mullin, playing his last game for Great Bend High school on the home court, was high for the Panthers, with 10 points.

The running score:

Great Bend	Hutchinson
0-2	Upson
0-4	Hardy
2-4	
2-4	Tice mft
2-6	Hardy
4-6	Tice f
5-6	Ryan f
5-8	Hardy
7-8	
7-8	Hardy mft
8-8	Hardy f
8-10	Ryan
	Hardy
	Hardy f
	Tice f
	Hardy
	Hardy
	Ryan f
	Tice
	Tice
	Upson f
	Upson f
	Hardy f
	Pittman mft
	Ryan f
	Upson
	Tice
	Tice mft
	Hardy
	Lees f
	Lees f
	Hardy
	Hardy
	Mullin
	Mullin
	Button
	Reed f
	Reed
	Reed
	Reed
	Button
	Button f
	Mortimer
	Button
	Pittman f
	Upson f
	Upson f
	Final

Final

Great Bend—32	G	Ft	F	Mg	Mft
23 Mullin, f	3	4	2	7	0
27 Button, f	2	3	1	11	2

24 Reed, c	0	4	2	5	0
20 McIlrath, g	1	1	1	1	0
25 Shivel, g	1	3	2	11	1
28 Mortimer, f	1	1	0	3	0
Total	3	16	8	38	3
Hutchinson—29	G	Ft	F	Mg	Mft
3 Upson, f, c	3	0	4	8	0
7 Pittman, f	0	1	2	9	1
12 Hardy, c	6	2	5	3	1
11 Tice, g	1	1	3	12	2
6 Ryan, g	1	1	3	1	0
10 Dean, g	0	0	0	0	0
4 Lees, f	1	0	2	0	0
9 Kuhns, g	0	0	0	0	0
8 Oswald, f	0	0	2	0	0
Total	12	5	21	33	4

By Quarters:

Great Bend	8	8	7	9—32
Hutchinson	10	4	7	8—29

### SCHOOL BOND VOTE APRIL 2

Voting April 2 on the proposed \$667,400 bond issue for expansion of the Great Bend school facilities is now assured, with the authorization by the state school fund commission for a vote on the increased levy, and subsequent approval by the local school board, the city council, mayor's proclamation, and official publication.

The school bond ballot will be handed to voters at the regular spring city election, along with their ballot for selecting city councilmen.

Proceeds of the sale of the bonds, if voted by the electors, will be used for the following:

- (1) Addition to the Morrison grade school, doubling capacity.
- (2) Addition to Riley grade school.
- (3) Addition to Washington grade school.
- (4) New senior high school.

### IN A NUTSHELL

Wednesday

Little River 33, Hudson 31 (B)
Nickerson 47, Macksville 34 (B)
Hoisington 50, Larned 29 (A)

Thursday

Claflin 41, Kanopolis 27 (B)
Sylvia 44, Garfield 23 (B)
Sterling 36, St. John 27 (A)
Ellinwood 28, Lyons 24 (A)
Hutchinson 30, Dodge City 23 (AA)
Great Bend 25, Salina 24 (AA)

Friday

Nickerson 45, Little River 21 (B)
Hoisington 36, Sterling 24 (A)
Garden City 33, Ellinwood 27 (A)
Claflin 28, Sylvia 27 (B)

Saturday

Nickerson 40, Claflin 30 (B)
Hoisington 34, Garden City 26 (A)
Great Bend 32, Hutchinson 29

PRINTING—No matter what you need in the line of office forms, manifold books, see The Herald.

# We Now Give 24-Hour Service

- SINCLAIR GASOLINE
- SINCLAIR OILS
- SINCLAIR GREASES
- GREASING
- WASHING
- POLISHING
- TIRE REPAIRING
- TIRES and TUBES
- ACCESSORIES
- BATTERIES

SEAT COVERS ----- \$7.95 set

## COFFEE SERVICE STATION

Broadway and Williams

Phone 135

# FENCING

for  
Lawn, Garden, Poultry, Rabbit and Field

- LAWN and GARDEN FENCE  
Scallop Top—16 and 42 inches high  
Plain Top—36 and 48 inches high
- POULTRY NETTING  
1 and 2 inch mesh, 2 to 5 feet high
- RABBIT FENCE  
2 Weights, 4 and 5 feet high
- FIELD FENCE  
26 and 32 inches high, 3 weights
- BARBED WIRE  
Standard Weight, 80-rod rolls

Buy Your Wire Needs Now  
While Our Stock Is Complete.

## Morrison Lumber Co.

Phone 164

16th & Main

# TRUCK TIRES

All Sizes  
Tires and Tubes

## JUMBO JR. TIRES

All Sizes 8-in. to 16-in.

# Hertel Tire Co.

1211 Main

Phone 594

### Thursday—B BLAZEK HITS 23

## Clafin Wins Over Kanopolis

•Clafin's Wildcats proved their district win over Kanopolis at Dorance last week was no fluke by decisively defeating the Bulldogs, 41-27 in the first game Thursday afternoon. Blazek, husky forward for Clafin was high scorer with 23. Coach Schrag used all his subs. The box score:

Clafin—41	G	Ft	F	Mg	Mft
12 Blazek, f	10	3	1	21	0
3 Wolford, f	1	0	3	5	3
5 Lang, c	1	3	1	3	0
6 Fairbairn, g	2	3	3	4	2
8 Steuder, g	0	2	2	1	0
4 Chism, f	0	1	0	0	0
7 Feaster, g	0	1	2	3	0
9 Webb, g	0	0	0	0	0
10 Willenberg, f	0	0	0	0	0
11 Hoffman, f	0	0	0	0	0
Totals	14	13	12	37	5

Kanopolis—27	G	Ft	F	Mg	Mft
33 Anderson, f	3	1	4	12	0
66 Jewell, f	1	5	2	9	2
55 Herrington, c	3	1	5	9	1
67 Boyer, g	2	2	1	2	0
99 Svoboda, g	0	0	4	2	0
11 Rivera, c	0	0	0	1	1
Totals	9	9	16	35	4

By quarters:  
Clafin ..... 14 9 6 12—41  
Kanopolis ..... 9 5 7 6—27

### Thursday—B MUSTANGS IN

## Sylvia Takes Out Garfield

•True to form, and with a four-pronged attack, the Sylvia Mustangs galloped over Garfield 44 to 23 Thursday afternoon to qualify for the semi-finals with Clafin.

The Keesling brothers, Eldon and Leroy, Janzen and Moeckel all scored four or more baskets for the winners, while Basom and Bennett were high for the Pawnee county team with 8 each. Sylvia took the lead and were never headed. The box score:

Sylvia—44	G	Ft	F	Mg	Mft
23 E. Keesling, f	4	0	0	3	2
20 Stone, f	1	1	2	4	1
28 L. Keesling, c	4	5	2	7	0
24 Janzen, g	5	0	3	2	1
26 Moeckel, g	4	1	1	9	1
27 Webber, g	0	1	2	0	0
Totals	18	8	10	25	5

Garfield—23	G	Ft	F	Mg	Mft
25 Basom, f	3	2	4	4	3
23 Leaf, f	1	0	1	4	0
28 Bennett, c	3	2	3	11	0
22 Johnston, g	0	0	0	5	1
24 Pearson, g	2	0	2	13	2
20 Strobel, g	0	0	1	0	0
21 Eikmeier, f	0	0	0	1	0
26 Stude, f	0	1	1	2	2
Totals	9	5	12	40	8

By quarters:  
Sylvia ..... 12 17 9 6—44  
Garfield ..... 8 7 3 5—23

### SOUTHWEST KANSAS LEAGUE

	Won	Lost	Pct.
Great Bend	7	1	.875
Dodge City	6	2	.750
Pratt	4	4	.500
Stafford	3	5	.375
Larned	0	8	.000



BOOK YOUR ORDERS

# NOW FOR BABY CHICKS

FOR FUTURE DELIVERY  
WE HAVE STARTED HATCHING  
Advance orders being taken for—

- WHITE ROCKS
- NEW HAMPSHIRE
- AUSTRALIAN WHITES
- WHITE LEGHORNS

SILENT SIOUX OIL-BURNING BROODERS  
STALEY'S FEEDS  
COMPLETE LINE OF POULTRY REMEDIES

## RUBLE'S HATCHERY

2003 Washington

Phone 823



### A Minx Modes Junior

One of our new Minx Modes Juniors, okayed by the Minx Modes Junior Board of Review. "Sunday at the Zoo"...done exclusively for Minx Modes in Belding's Spellbound...1.0 denier miracle rayon. Aqua, cocoa, pink, sizes 9 to 15. 16.50

Minx Modes Juniors Exclusively Here

## Stephan-Isern

"Smart and Thrifty"

# Great Bend To State Tourney By Salina Win

Great Bend H. S. qualified for its first Class AA state basketball tournament Thursday night by defeating Salina, defending state champions, 25 to 24 in a thrilling game.

The Panthers took the lead from the very start and held it throughout except for a few seconds in the final quarter, when the Maroons led 22 to 21.

Coach Al Burns' boys won by cashing in their free throws, scoring 13 of 18 attempts for 72% while the Salina team made good only 6 out of 15 for 40%.

Both teams, ordinarily high scorers, made a low percentage of field goals, Great Bend caging only 15% and Salina only 20%.

Salina previously had lost only three games, two of them to McPherson, Central Kansas champions. Salina holds two victories by comfortable margins over Topeka, a team that has defeated Hutchinson, Great Bend's opponent in the regional Class AA finals Saturday night.

Both Great Bend and Hutchinson will be in the Topeka state finals tournament, regardless of which team wins here. The 16-team tournament, composed of first and second place winners in eight Class AA regionals, begins Wednesday and continues through Saturday, of next week.

The running score:

Reed mft	0-0	Engle f
Button	1-0	Powell f
McIlrath f	1-1	Anderson
Mullin	3-1	
Shivel f	3-2	Powell
Shivel	5-2	
Mullin mft	6-2	Linville f
	6-4	Engle
	6-6	Engle
Reed 2ft	8-6	Linville f
Shivel mft	8-6	Engle f
Reed	10-6	

**Second Quarter**

Reed	12-6	
Shivel mft	12-6	Engle f
	12-8	Stauffer
McIlrath f	12-8	Malstrom mft
McIlrath mft	12-8	Malstrom f

**Third Quarter**

Shivel	14-8	
Mullin f	14-8	Linville mft
	14-10	Powell
Button f	14-11	Powell
Shivel 2ft	16-11	Anderson f
Mullin f	16-11	Engle mft
Button	17-11	Powell f
	17-13	Weber
Reed	18-13	Linville f
	18-15	Weber

**Fourth Quarter**

McIlrath f	18-17	Linville f
Shivel	19-17	Kennedy f
Mortimer f	19-17	Weber mft
	19-19	Engle
Shivel	20-19	Kennedy f
Shivel f	20-19	Weber mft
Reed	21-19	Engle f
Shivel f	21-19	Engle mft
	21-21	Engle
Mullin f	21-21	Engle mft
Button f	21-22	Weber
Reed	23-22	
McIlrath	24-22	Engle f
Reed	25-22	Linville f
Button f	25-22	Linville mft
	25-24	Powell

The box score:

<b>Great Bend—25</b>	G	Ft	F	Mg	Mft
23 Mullin, f	1	1	3	9	1
27 Button, f	0	2	3	6	0
24 Reed, c	3	5	0	6	1
20 McIlrath, g	0	1	3	3	1
25 Shivel, g	2	4	3	9	2
28 Mortimer, f	0	0	0	2	0
Totals	6	13	12	35	5
<b>Salina—24</b>	G	Ft	F	Mg	Mft
34 Engle, f	4	0	4	6	4
33 Powell, f	1	2	2	7	0
35 Weber, c	3	1	0	4	2
32 Linville, g	0	2	4	8	2
38 Anderson, g	0	1	1	1	0
30 Kennedy, f	1	0	2	6	0
36 Stauffer, g	0	0	0	3	0
37 Baughman, g	0	0	0	0	0
39 Schultz, g	0	0	0	0	0
40 Malstrom, f	0	0	1	2	1
Totals	9	6	14	37	9

By quarters:

Great Bend	10	2	6	7—25
Salina	6	2	7	9—24

**BEST MEDIUM**

## Herald Leads In Farm Ads

To reach the rich farm market, The Great Bend Herald offers the best advertising medium in Central Kansas. More and more advertisers are discovering this fact, as demonstrated in last week's issue, March 1. The number of "Farms for Sale" ad-

vertisements in newspapers of this area on the corresponding date were:

Great Bend Herald	18
Topeka Capital	11
Hutchinson News-Herald	8
Russell Record	6
Kingman Journal	6
Hoisington Dispatch	5
Stafford Courier	4
Ness City News	4
Great Bend Tribune	3

Kingman Leader-Courier	3
Larned Tiller and Toiler	3
St. John News	2
LaCrosse News	1
Kinsley Mercury	1
Many Others	0

Beards and sideburns sported by the Hutchinson boys created a sensation when they first came on the floor. It's a stunt to advertise Hutchinson's "Pow-Wow."

## IN STOCK NOW

- |                  |                    |
|------------------|--------------------|
| Electric Heaters | Kid Wagons         |
| Vacuum Cleaners  | Batteries          |
| Tarps            | 2-Gal Thermos Jugs |

## WESTERN AUTO ASSOCIATE STORE

1113 Main

Phone 630

SPLIT DRY 1-lb. Pkg.

Peas . . . 17c

ITALIAN STYLE 1-lb. Bag

Spaghetti 17c

PURE EGG 1-lb. BAG

Noodles 23c

RITZ 1-lb. BOX

Crackers 23c



There's no need to slow up appetites on fast days . . . not if you shop at I. E. Farmer's. We've a grand variety of good-tasting LENTEN FOODS . . . foods that put plenty of ZING into appetizing dishes. Right here are 40 such foods . . . one for each day of Lent. Check them and see what truly wonderful meals they suggest at really low cost. Our vast variety of ALL foods is a big reason why so many people come to I. E. Farmer's for quick . . . easy . . . economical shopping.

FANCY CUT 1-lb. BAG

Macaroni 15c

WASHBURN'S 1-lb. Pkg.

Lentils . 17c

WHITE MEAT 7-oz. CAN

Tuna Fish 39c

BETTY CROCKER PKG.

Soup Mix 9c

## FRUITS & VEGETABLES

CRISP FRESH EACH

HEAD LETTUCE . . . 9c

TEXAS JUICE

ORANGES . . . doz. 29c

WASHINGTON WINESAP

APPLES . . . 2 lbs. 29c

LARGE CLEAN FLORIDA

New Potatoes . 3 lbs. 25c

FANCY, LARGE, FLORIDA

TANGERINES . . . doz. 39c

TEXAS PINK

Grapefruit . . . 5 lbs. 29c

## MEAT DEPARTMENT

TENDERIZED, HALF OR WHOLE

SMOKED HAMS . lb. 34c

EXTRA STANDARD

OYSTERS . . . pt. 78c

BROOKFIELD LONGHORN

CHEESE . . . lb. 38c

PERCH

FILLETS . . . lb. 53c

COUNTRY ROLL

BUTTER . . . lb. 53c

GRADE "A" BEEF

ROASTS . . . lb. 23c

GRADE "A" LB.

Short Cuts 31c

## GROCERY DEPARTMENT

C & H BAG

CANE SUGAR 5 lbs. 39c

VAN CAMP'S 12-oz. CAN

BAKED BEANS . . . 9c

PURE TEXAS 46-oz. CAN

Grapefruit Juice . . 29c

SWEETENED 46-oz. CAN

ORANGE JUICE . . 49c

SUMMER GIRL NO. 2 CAN

GREEN BEANS . . . 15c

MIDWEST NO. 2 1/2 CAN

TOMATOES . . . 18c

RAINBOW NO. 2 CAN

SWEET CORN . . . 12c

RAINBOW NO. 2 CAN

SWEET PEAS . . . 12c

DELMONTE NO. 2 1/2 CAN

HALF PEACHES . . 32c

WILSON'S NO. 1 CAN

CHILE CON CARNE . 25c

KRISPY BOX

CRACKERS . . 2 lbs. 33c

CAMPBELL'S TALL CAN

TOMATO SOUP . . 9c

FOLGER'S DRIP JAR

COFFEE . . . 2 lbs. 63c

FRESH CAUGHT LB.

Cat Fish 55c



STORE HOURS 9 a. m. to 7 p. m.

Phone 742

18th & Washington

# CONGRATULATIONS

## Great Bend Black Panthers

**On Your Brilliant Victory Over The Salina State Champions**

**Qualifying Great Bend For**

**Regional Finals, Great Bend, Tonight**

**State Class AA Tournament, Topeka, Mar. 13-14-15-16**

Coach Allen W. Burns and his Southwest League Champions have brought glory to Great Bend by qualifying for the State Class AA Tournament. The

Black Panthers play clean, hard basketball, and are a credit to their coach, their school, and their community. In wishing them success in

the Regional Finals here Saturday night with Hutchinson, and in the Topeka Tournament, all Great Bend assures them, win, lose or draw, of their wholehearted support.

# ON TO TOPEKA

S. R. Blackburn

The Kansas Power Co.

Walnut Creek Milling Co.

Armour Creameries

Ralph Wallace Cafe

Nash-Finch Company

Peter Pan Cleaners

Lischesky Dry Goods Co.

Rock Island Lumber Co.

Automotive Parts Co., Inc.

Don C. McIlrath

Plaza-Kansan-Strand Theatres

**FRIDAY—B  
WELKER RIGHT**

**Nickerson  
Scalps LR**

•Led by the lithe, long-legged Marion Welker, who couldn't seem to miss, the classy Nickerson Panthers rolled over Little River Redskins, 45 to 21 in Friday night's curtain raiser, to go into the Class B finals.

The hot-shooting Reno County H S. lads, after spotting the Little River boys a 4-point lead, soon piled up a lead that continued to widen.

The running score:

<b>Nickerson</b>	<b>Little River</b>
0-2	Link
0-4	Strohm
2-4	
4-4	
6-4	
8-4	
10-4	
12-4	
12-4	
12-4	
14-4	
14-5	
14-5	

Welker	14-7	Cordell
Johnson f	16-7	White mft
Bruning mft	16-7	Cordell f
Johnson	18-7	
Johnson f	18-8	White
Welker	19-3	Weber f
	19-10	Cordell
Bruning mft	19-10	Link f
Welker f	19-10	White mft
Welker mft	19-10	White f
Bruning	21-10	
Pallister f	21-11	Miller
Welker	23-11	
	23-13	White

**3rd Quarter**

Detter	25-13	Strohm f
Johnson	27-13	
Welker	28-13	Strohm f
Johnson f	28-13	Miller mft
Johnson	30-13	
Pallister mft	30-13	Link f
Bruning mft	30-13	Miller f
Welker	32-13	
Detter f	32-14	Cordell mft
Welker f	32-14	White mft
Bruning mft	32-14	Cordell f
	32-16	Cordell

**4th Quarter**

Engelland	34-16	Hubbard f
Bruning mft	34-16	White f
Towse mft	34-16	
McKee f	34-16	Cordell mft
Johnson	36-16	
Pallister mft	37-16	Hubbard f
Engelland f	37-17	Strohm mft
Towse	39-17	Link f
Welker	41-17	
Welker	43-17	

Welker f	43-17	Strohm mft
Towse f	43-19	Cordell
Welker	45-19	
Engelland f	45-20	White
Welker f	45-21	Strohm
	Final	

The box score:

<b>Nickerson—45</b>	<b>G</b>	<b>Ft</b>	<b>F</b>	<b>Mg</b>	<b>Mft</b>
11 Welker, f	9	2	4	6	1
12 Pallister, f	4	1	1	6	2
5 Bruning, c	1	0	1	7	9
3 Detter, g	0	2	2	3	0
8 Johnson, g	4	0	4	4	2
10 McKee, g	0	0	0	1	0
6 Engelland, f	1	0	2	2	0
7 Towse, c	1	0	1	4	2
9 Brittain, f	0	0	0	1	0
Totals	20	5	15	34	16

**Little River—21**

<b>Little River—21</b>	<b>G</b>	<b>Ft</b>	<b>F</b>	<b>Mg</b>	<b>Mft</b>
44 Link, f	1	0	4	8	1
33 White, f	1	3	3	7	5
22 Cordell, c	3	3	2	6	3
11 Miller, g	0	1	2	6	1
77 Strohm, g	1	2	3	3	2
66 Hubbard, g	0	0	3	5	0
00 Johnson, f	0	0	0	0	0
Totals	6	9	17	35	12

By Quarters:

Nickerson	14	9	9	13	—45
Little River	4	9	3	5	—21

**FRIDAY—A  
EAGLES TIRE**

**Garden City  
Hit Pace Late**

•The sharp-clawed Ellinwood Eagles gave the Garden City Buffaloes a thorough going over during the first half of Friday night's second game, but the thundering herd from out west got started in the last half and finally trampled under the Barton county team, 33 to 27 to qualify for the Class A finals.

The running score:

<b>Garden City</b>	<b>Ellinwood</b>
0-2	Norris
0-2	Norris mft
1-2	Norris f
1-4	Richter
3-4	
3-4	Kincaid f
3-5	Kincaid
3-5	Thorson f
3-6	Norris
3-8	Redman

**2nd Quarter**

Brennaman f	3-9	Redman
Oswalt	5-9	
Jones f	5-10	Thorsen mft
Oswalt f	5-11	Norris
Oswalt	7-11	
	7-13	Gilmer
	7-15	Richter
Vawter	8-15	Norris f
Guy f	8-15	Norris mft
Vawter	10-15	
Jones	12-15	

**3rd Quarter**

Oswalt	12-17	Richter
Brennaman	14-17	
Oswalt	16-17	
Oswalt	18-17	
Vawter f	18-18	Richter mft
Brennaman	20-18	
Trebilcock	22-18	
Jones	24-18	
	24-20	Redman

**4th Quarter**

Jones	26-20	
Jones mft	26-20	Kincaid f
	26-22	Redman
Jones	28-22	
Vawter	29-22	Richter f
	29-24	Richter
Oswalt	31-24	
Oswalt	31-25	Norris
Jones mft	31-25	Norris f
Vawter	33-25	
Oswalt mft	33-25	Gilmer f
Brennaman f	33-26	Thorsen mft
Vawter f	33-26	Richter mft
Jones f	33-27	Kincaid mft
	Final	

The box score:

<b>Garden City—33</b>	<b>G</b>	<b>Ft</b>	<b>F</b>	<b>Mg</b>	<b>Mft</b>
26 Oswalt, f	5	0	3	8	3
29 Trebilcock, f	1	0	0	5	0
24 Jones, c	4	2	3	11	2
23 Brennaman, g	3	0	2	14	0
21 Stenzil, g	0	0	0	6	0
22 Leopold, g	0	0	1	2	0
28 Vawter, f	2	1	2	7	0
27 Guy, f	0	0	1	0	0
Totals	15	3	12	53	5

**Ellinwood—27**

<b>Ellinwood—27</b>	<b>G</b>	<b>Ft</b>	<b>F</b>	<b>Mg</b>	<b>Mft</b>
39 Richter, f	4	1	1	12	3
36 Gilmer, f	0	0	1	3	0
33 Norris, c	1	3	3	11	2
31 Thorson, g	0	2	1	6	2
30 Redman, g	4	1	0	7	0
32 Kincaid, f	0	2	2	3	1
34 Herold, g	0	0	0	0	0
Totals	9	9	8	42	8

The head mogul of the referees association, Carl Kopelk of McPherson is one of the officials at the tournament. Big Carl, who has officiated here in football also, was elected president of the Kansas Officials Association last week.

Nickerson has a record of 14 straight victories on their home court, and is undefeated in their bailiwick this season, even conquering Pretty Prairie and Buhler at Nickerson. The Panthers finished third in the toughest Class B league in the state, perhaps any state.

**RADIO REPAIRING**

ALL MAKES

Console - Table - Auto

**WALTER SEARS STORE**

1115 Main

Great Bend

Springtime Is

**PAINT TIME**

We have recently received a large stock of

**WHITE PAINT**

The best of quality

Also the

**PRIMER**

for new and old work.

We have also a good stock of the PURE SPIRITS OF TURPENTINE

and

PURE LINSEED OIL

Call on us

**Great Bend Lumber Co.**

EVERYTHING TO BUILD ANYTHING

D. W. Hamilton, Mgr.

Phone 85

**PRESSING  
While You Wait!**

Also Quick Service on

**Cleaning and Blocking Hats**

**Cleaning and Pressing  
Men's Suits**

**STAR CLEANERS**

1117 S. Main

Phone 627

Attention, Sportsmen!

**Flying Suits**

Also Ideal for

**Hunting and Fishing**

A good, all around garment—light weight, warm, water repellent.

**\$7.95**

**Just Received**

**Fishing Supplies**

- Fly Reels
- Fly Lines
- Sinkers
- Fly Leaders
- Nylon Casting Lines
- Corks
- Norway Fish Hooks, all sizes.

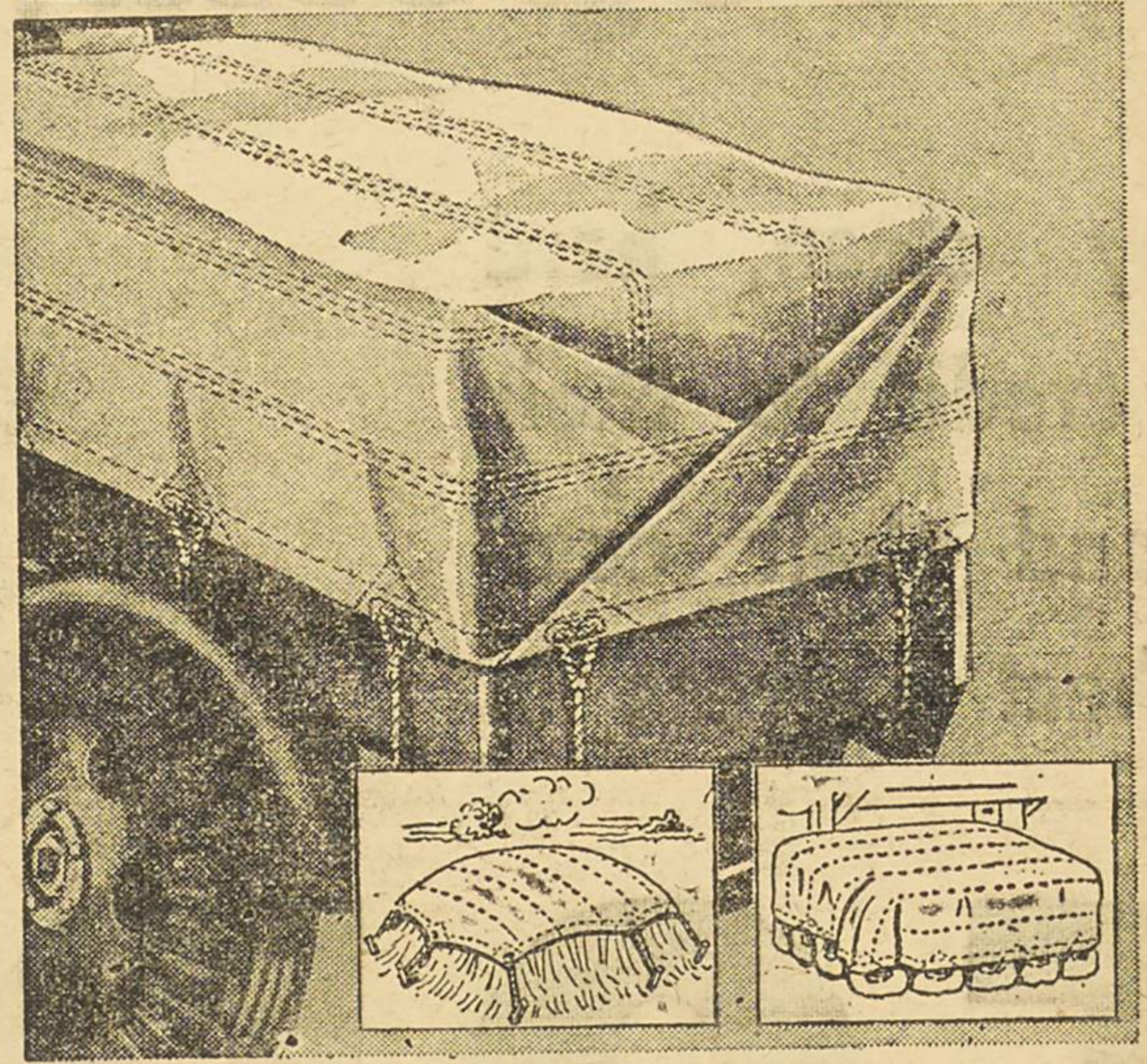
Come in and see our line

**Bynum's Army Store**

1222 Main

One Block East Auditorium

*It's Wards for Canvas Covers!*



**REDUCED . . . WATER-PROOFED CANVAS COVERS, Now 6<sup>50</sup>**

**FARMERS! TRUCKERS!** Come to Wards for canvas covers. 12.60-oz. Army duck covers. Light in weight, but strong. Easy to handle. Water-repellent treated. Mildew resistant. Use for covering trucks crops—protecting outdoor equipment and supplies

**SPECIAL! REDUCED!**

**OTHER SIZES—12.35-OZ. WEIGHT**

7 1-2x10	6.50	12 1-2x16	15.90
7 3-4x10	6.95	14x20	22.50
9 1-3x12	9.95		

BASEMENT, SPORTING GOODS DEPARTMENT  
PLENTY of Courteous Salespeople to Serve You

**Montgomery Ward**

GREAT BEND

EAGLES WIN

Ellinwood Shades Lyons

The third Barton county team to win in the tournament, Ellinwood's Eagles, playing powerfully, won 28 to 24 over their old Central Prairie league rivals, Lyons, in the opening game Thursday night.

Lyons took an early lead, but Ellinwood soon got the upper hand and held it for the most part by narrow margins.

The Running Score

Table showing running scores for Ellinwood and Lyons players like Norris mft, Kincaid mft, Thorsen, etc.

2nd Quarter

Table showing 2nd quarter scores for Ellinwood and Lyons players.

Third Quarter

Table showing 3rd quarter scores for Ellinwood and Lyons players.

Fourth Quarter

Table showing 4th quarter scores for Ellinwood and Lyons players.

The box score:

Box score table for Ellinwood vs Lyons, showing G, Ft, F, Mg, Mft for both teams.

THURSDAY—A

BEARS WIN

Sterling In Last Half

Breaking a first half tie, the Sterling Bears won the dubious honor of playing Hoisington in the semi-finals of Class A Thursday afternoon, 36 to 27. Yeakel (5) with 15 and Wyatt (4) guard with 11 were high for the winners, while guard Bob Kelley's 11 was high for the Stafford countians.

The box score:

Box score table for Sterling vs St. John, showing G, FT, F, Mg, Mft for both teams.

THE HERALD'S BOX SCORING

As you will notice, The Herald's method of publishing box scores is much more complete than the ordinary method. The player's number is given first, then his last name, with initial or first name if there are other players with the same last name, and the position played: forward, f; center, c; guard, g.

The five columns of figures are as follows: G—Field goals made. Ft—Free throws made. F—Fouls committed. Mg—Field goals missed. Mft—Free throws missed.

To compute the total score made by any player or team, simply multiply Gx2 and Ftx1, and add together.

To compute the percentage of attempted field goals made by any player or team, divide G by the total of G plus Mg.

To compute the percentage of attempted free throws made by any player or team, divide Ft by the total of Ft plus Mft.

In the box scores as published by The Herald, substitutes' names appear in the order that they first entered the game, regardless of the position played. The first five names are starters, sixth name the first substitute, etc.

Wednesday—A

SURPRISED?

Hoisington 50 Larned 29

Hoisington's Cardinals, picked by many basketball observers to battle it out with Wamego for the state Class A championship, easily won their opener Wednesday night 50 to 29 from Larned, cooramat of the Southwest Kansas League.

Dean Streck, A. C. Ford and Bill Boldenow led the basket barrage, convincing a few skeptics that Hoisington isn't a one-man team. Big Rick Harman, 6-foot-4 center, averaged 21.7 points per game to lead the Central Prairie League; but he has some teammates who bear plenty of watching too. Berryman, slender Larned junior forward who will be heard from next year, scored 16 points for high honors on either team.

The Cardinal regulars sat out part of the second and fourth quarters, but their replacements failed to score.

The box score:

Box score table for Hoisington vs Larned, showing G, Ft, F, Mg, Mft for both teams.

By quarters: Hoisington 17 6 15 12—50 Larned 4 9 7 9—29

HUTCH STAYS IN

Salt Hawks Nip Dodge

Playing methodical, alert basketball, the Hutchinson Salt Hawks, runners-up in the Ark Valley league, overcame the hard fighting Dodge City Red Demons, second place winners in the Southwest Kansas league, 30 to 23 in the second game Thursday night, to sweep into the Class AA finals Saturday night.

Hutchinson's tight defense forced the western team to be content with long or closely guarded shots. The Hawks missed frequently from the field, and the Demons' free throwing was not up to par.

The Running Score

Table showing running scores for Dodge City and Hutchinson players like McCracken, Tomlinson mft, Wilson, etc.

Third Quarter

Table showing 3rd quarter scores for Dodge City and Hutchinson players.

Fourth Quarter

Table showing 4th quarter scores for Dodge City and Hutchinson players.

Box score table for Hutchinson vs Dodge City, showing G, Ft, F, Mg, Mft for both teams.

Box score table for Dodge City vs Hutchinson, showing G, Ft, F, Mg, Mft for both teams.

By Quarters: Hutchinson 8 10 9 3—30 Dodge City 8 7 4 4—23

Announcement over the public address system by Gerald Barker, former G.B.H.S. basketball coach, is a big aid to spectators in following the tournament games this year. With the crowds sometimes blocking a view of the scoreboard, the score has to be announced occasionally.

Yippee! Al Burns for Mayor!

Other Tournaments FRIDAY

- At Pratt—Pratt 37, Kingman 26 (A) Stafford 49, Liberal 40 (A) Lewis 43, Kiowa 35 (B) Mullinville 47, Sun City 36 (B) At McPherson—Lindsborg 38, Moundridge 31 (B) Buhler 44, Kipp 35 (B) At Shawnee Mission—Shawnee Mission 41, Haskell 21 (AA) Argentine 33, Ward 32 (AA) At Leavenworth—Wyandotte 32, Lawrence 30 (AA) At Winfield—Winfield 48, Wichita East 43 (AA) Wellington 51, Arkansas City 50 (AA) At Wichita—McPherson 28, Eldorado 25 (AA) Newton 20, Wichita Cathedral 15 (AA) Pretty Prairie 41, Walton 30 (B) Haven 40, Sedgwick 27 (B)

THURSDAY

- At Pratt—Pratt 67, Harper 31 (A) Lewis 51, Bucklin 26 (B) Mullinville 43, Attica 36 (B) Sun City 31, Ashland 28 (B) Kiowa 37, Greenburg 36 (B) At Emporia—Topeka 50, Manhattan 29 (AA) Emporia 34, Junction City 28 (AA) At Chanute—Ottawa 34, Coffeyville 25 (AA) Chanute 50, Independence 24 (AA) At Leavenworth—Lawrence 37, Atchison 23 (AA) Wyandotte 37, Leavenworth 29 (AA)

WEDNESDAY

- At Pratt—Stafford 42, Anthony 36 (A) Liberal 37, Caldwell 29 (A) Lewis 46, Cunningham 24 (B) Attica 40, Cullison 39 (B) At Wichita—Wichita Cathedral 32, Wichita North 26 (AA) At Winfield—Arkansas City 46, Wichita Plainview 30 (AA) At Hays—Russell 36, Phillipsburg 20 (A) Wakeeney, 55, Ellsworth 46 (A)

16 Qualify For AA State Meet

With Friday night's semi-finals in the eight regional AA tournaments, all 16 teams qualified for the state tournament at Topeka March 13 to 16 have been determined. They are:

- Great Bend Hutchinson Pittsburg Chanute Topeka Columbus Ottawa Emporia Lawrence Wyandotte Newton McPherson Winfield Wellington Shawnee Mission Argentine

Pairings will be made by E. A. Thomas, state commissioner, Sunday. Great Bend is hoping to draw Winfield in the opening round. Winfield holds a 34 to 17 victory over the Panthers, during the clinic here last December, and it is the only unavenged loss on Great Bend's record.

In Class A, the champions of each of the 11 regionals will qualify, along with five other teams with strong records. The Class A tournament will be in Salina March 13-16.

Only champions in Class B can be sure of a spot in the state tournament at Hutchinson on the same dates.

The Southwest Kansas League has added a lot to its prestige in the regionals this year by eliminating last year's champions. Great Bend took out Salina in AA while Stafford eliminated Anthony in A.

MACKSVILLE OUT

Nickerson Wins 47-34

After trailing at the half, the Nickerson Panthers turned the heat on Macksville in the last half to qualify with a 47-34 victory for the semi-finals in the second game Wednesday night.

Don Bruning (5) the famous football star, was high point man with 17 before fouling out in the last half. Evans (22) Macksville forward hit the net for 13 to lead for the losers.

The score was knotted at 2, 14, 16 and 18 before the Mid-Kansas boys hit their stride and put the game on ice.

The box score:

Box score table for Nickerson vs Macksville, showing G, Ft, F, Mg, Mft for both teams.

By quarters: Nickerson 8 8 19 12—47 Macksville 9 9 5 11—34

Wednesday—B

SCALP 'CATS

Little River Beats Hudson

Overcoming an early lead and staying off a desperate late rally, the Little River Redskins earned their way into the Class B semi-finals in the opening game Wednesday night by defeating the fighting Hudson Wildcats, 33 to 31.

Wendell White, shifty forward for the Rice countians, was high scorer with 14, and Stalcup, bespectacled center scored 11 for the Stafford county team.

Hudson took an early lead and held it through the first quarter. Little River forged into the second frame, holding it through the third, but the Wildcats tied it up as the quarter ended at 22-all, and again, late in the final quarter at 30-30. Little River had what it took in the clutch, however, and got a free throw to give them a one-point lead they nursed throughout, scoring a setup when Hudson weakened their defense to attempt to get the ball.

Little River—33 G Ft F Mg Mft 44 Link, f 3 1 3 10 3 33 White, f 6 2 2 3 2 22 Cordell, c 2 2 1 10 5 11 Miller, g 2 0 2 7 0 77 Strohm, g 1 0 0 5 2 Totals 14 5 8 35 12

Hudson—31 G Ft F Mg Mft 66 Witt, f 3 2 4 10 0 55 Fisher, f 1 0 1 7 0 77 Stalcup, c 5 1 2 7 0 33 Dobbs, g 2 2 3 4 0 88 Searle, g 0 2 4 2 2 22 Bixler, g 1 0 0 2 0 Totals 12 7 14 32 2

By quarters: Little River 3 12 7 11—33 Hudson 6 5 11 9—31

Four Winning Teams in Great Bend

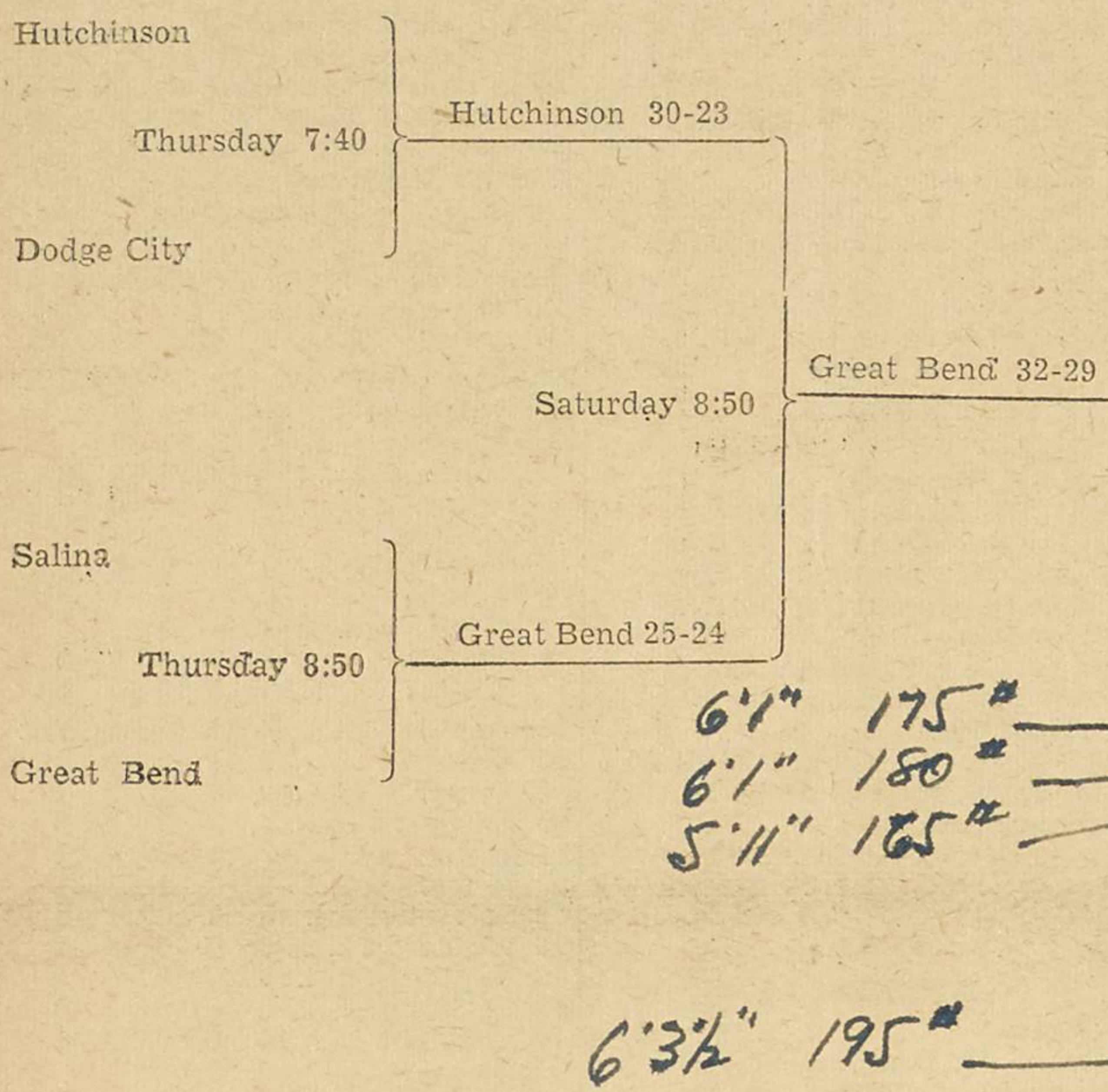
1945-46 SEASON RECORDS

Table showing season records for High School, Junior Varsity, Freshmen, and Junior High teams.

# 13 Schools Share All-Star Honors

•No tournament would be complete without the all-star selections, and in order to complete its thorough news coverage of the tournament, The Great Bend Herald presents its first and second team selections in all three classes.  
Season reputations were ignored in making these selections, the only evidence considered being the performances during the regional tournament games, Wednesday, Thursday and Friday. This policy has resulted in the omission from honors of many fine players who happened to be cold in their early tournament appearances.  
The Herald believes these selections are in keeping with the ability displayed in the tournament up to the starting of the finals, but readily grants to all sports fans the right for each and every one to pick all-tournament teams of his own, and argue that his are better. Get out your pencil, Butch, and start picking!

## CLASS AA BRACKET



## The Great Bend Herald's Selection for All Tournament Teams

The following teams were selected on the basis of individual performances in the first three days of the Great Bend State Regional Tournament, without reference to regular season's play, and before play is started in the final games Saturday.

### CLASS AA

First Team—	Position	Second Team—
Dale Engle (34) Salina (Jr)	F	Pete Wilson (69) Dodge City (Jr)
Jack Pittman (7) Hutchinson (Sr)	F	Bill Mullin (23) Great Bend (Sr)
R. J. Reed (24) Great Bend (Sr)	C	Tom Hardy (12) Hutchinson (Sr)
Orban Tice (11) Hutchinson (Sr)	G	Dave Shivel (25) Great Bend (Sr)
Don McIlrath (20) Great Bend (Sr)	G	Aubrey Linville (32) Salina (Sr)

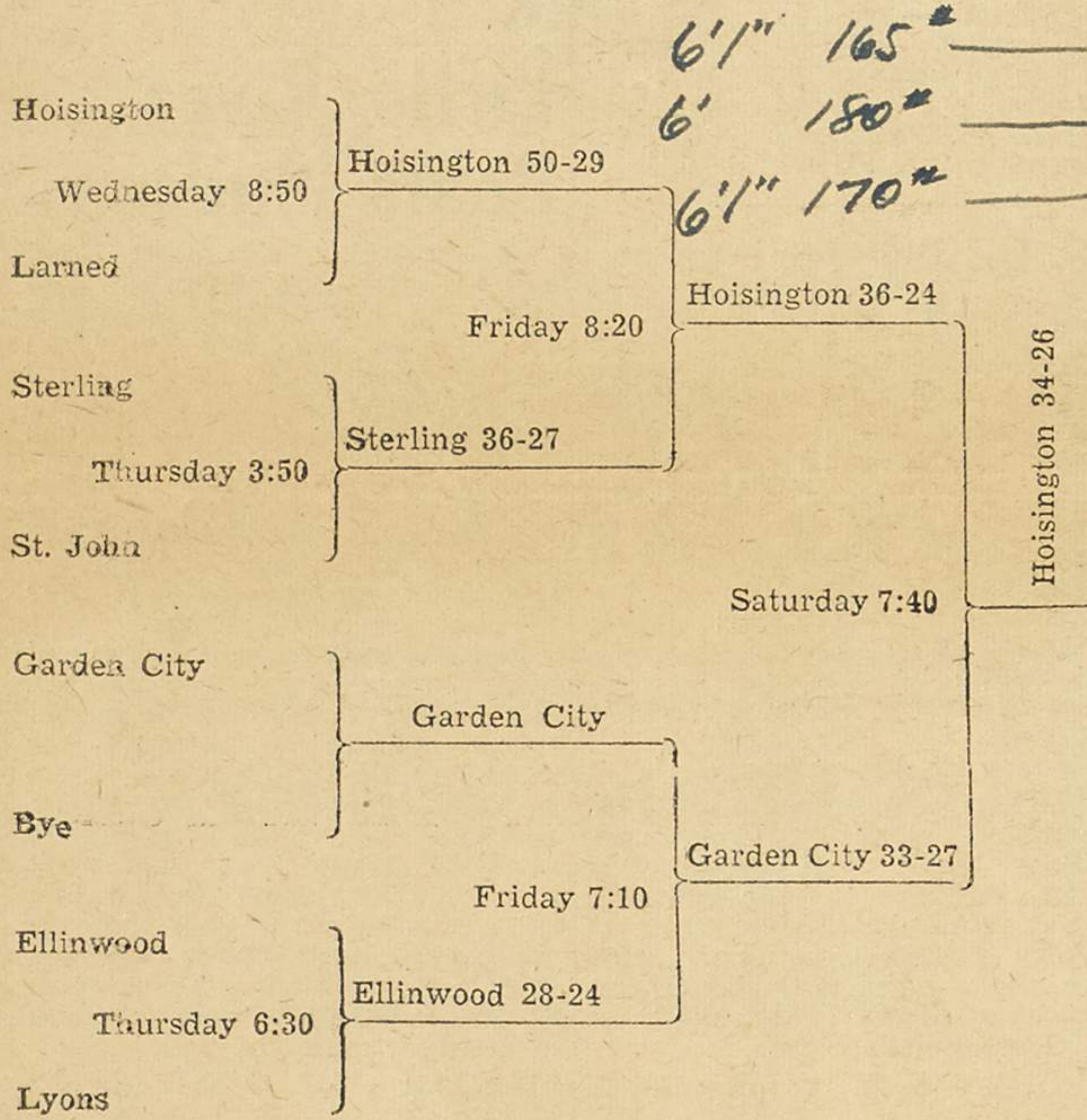
### CLASS A

John Oswalt (26) Garden City (Jr)	F	A. C. Ford (30) Hoisington (Sr)
Don Richter (39) Ellinwood (Sr)	F	Dean Streck (39) Hoisington (Sr)
Richard Harman (38) Hoisington (Sr)	C	George Jones (24) Garden City (Sr)
Bill Boldenow (32) Hoisington (Jr)	G	Vernon Deutsch (35) Hoisington (Sr)
Fred Brenneman (23) Garden City (Sr)	G	Billy Wyatt (4) Sterling (Sop)

### CLASS B

Marion Welker (11) Nickerson (Sr)	F	Richard Evans (22) Macksville (Sr)
Harold Blazek (12) Claflin (Jr)	F	Leland Pallister (12) Nickerson (Jr)
Don Bruning (5) Nickerson (Sr)	C	Leroy Keesling (28) Sylvia (Jr)
Leighton Fairbairn (6) Claflin (Jr)	G	Bernard Johnson (8) Nickerson (Sop)
Donald Moeckel (26) Sylvia (Sr)	G	Bob Miller (11) Little River (Jr)

## CLASS A BRACKET



## CIRCUS FINISH

### Claflin Puts Sylvia Out

•With a circus finish that paralleled Thursday night's sensational finale, the Claflin quintet Friday night showed why they are called "Wildcats" by outfighting the highly regarded Sylvia Mustangs, to win their way into the Class B finals, 28 to 27.  
The Barton county team played inspired basketball, gaining a lead early, and making a flashing comeback in the final quarter to regain it after many spectators thought they were fighting a lost cause.

The Sylvia team, all big fast boys, had lost only one game during the regular season, and doubled the score on their opponents in the opening tournament game here.

The running score:

Sylvia score	Claflin score
M. Turner f 0-2	Lang 0-2
E. Keesling f 0-3	Lang 0-3
Moekel mft 0-3	Blazek 0-5
E. Keesling 2-5	Steudef f 2-7
L. Keesling mft 2-7	Wolford 2-7
E. Keesling 4-7	Steudef f 4-7
Moekel f 4-9	Blazek 2 mft 4-9
	Lang 4-9

#### Second Quarter

L. Keesling 6-9	Lang mft 6-9
C. Turner f 6-9	Lang f 8-9
Moekel 8-9	Blazek mft 9-9
Moekel f 9-9	Blazek mft 11-9
L. Keesling 11-9	Moekel 13-9
Moekel 13-9	Stone f 13-11
Stone f 13-11	Blazek 15-11
Moekel 15-11	Wolford f 16-11
Moekel 16-11	Lang mft 16-12
L. Keesling 16-12	Stone 18-12
Stone 18-12	

#### Third Quarter

Moekel f 18-13	Lang 18-13
Stone mft 18-13	Fairbairn f 18-15
L. Keesling mft 19-15	Blazek 19-15
L. Keesling 21-15	Lang f 21-15
Moekel mft 21-15	Blazek f 23-15
Moekel 23-15	L. Keesling f 23-15
L. Keesling f 23-15	Steudef f 23-15
Stone mft 23-15	Lang 23-17
Stone 23-17	Wolford f 24-17
Stone 24-17	Blazek 24-19
L. Keesling mft 24-19	Lang f 26-19
M. Turner 26-19	

#### Fourth Quarter

Moekel 26-21	Blazek 27-21
M. Turner f 27-22	Fairbairn 27-22
Moekel f 27-23	Lang 27-23
Moekel mft 27-23	Blazek f 27-23
E. Keesling f 27-24	Wolford 27-24

FRIDAY—B  
Blazek 27-26  
Wolford 27-28  
Lang mft 27-28  
F. Blazek 27-28

The box score:

Claflin—28	G	Ft	F	Mg	Mft
12 Blazek, f	5	2	3	21	3
3 Wolford, f	1	3	3	12	0
5 Lang, c	2	6	4	5	4
6 Fairbairn, g	0	1	1	8	0
8 Steuder, g	0	0	3	6	0
7 Feaster, g	0	0	0	0	0
9 Webb, g	0	0	0	0	0
Totals	8	12	14	52	7

Sylvia—27	G	Ft	F	Mg	Mft
23 E. Keesling, f	1	2	2	7	0
20 Stone, f	2	1	1	3	2
28 L. Keesling, c	3	1	3	9	3
26 Moeckel, g	3	3	4	5	4
22 M. Turner, g	1	0	3	2	0
21 Turner, g	0	0	1	1	0
Totals	10	7	14	27	9

By quarters:

Claflin	9	3	7	9	—28
Sylvia	4	14	8	1	—27

## FRIDAY—A

### BEARS STUBBORN

### Cardinals Win No Walkaway

•Overcoming stubborn resistance from the Sterling Bears, the Hoisington Cardinals soared into the Class A finals by winning 36 to 24 Friday night.

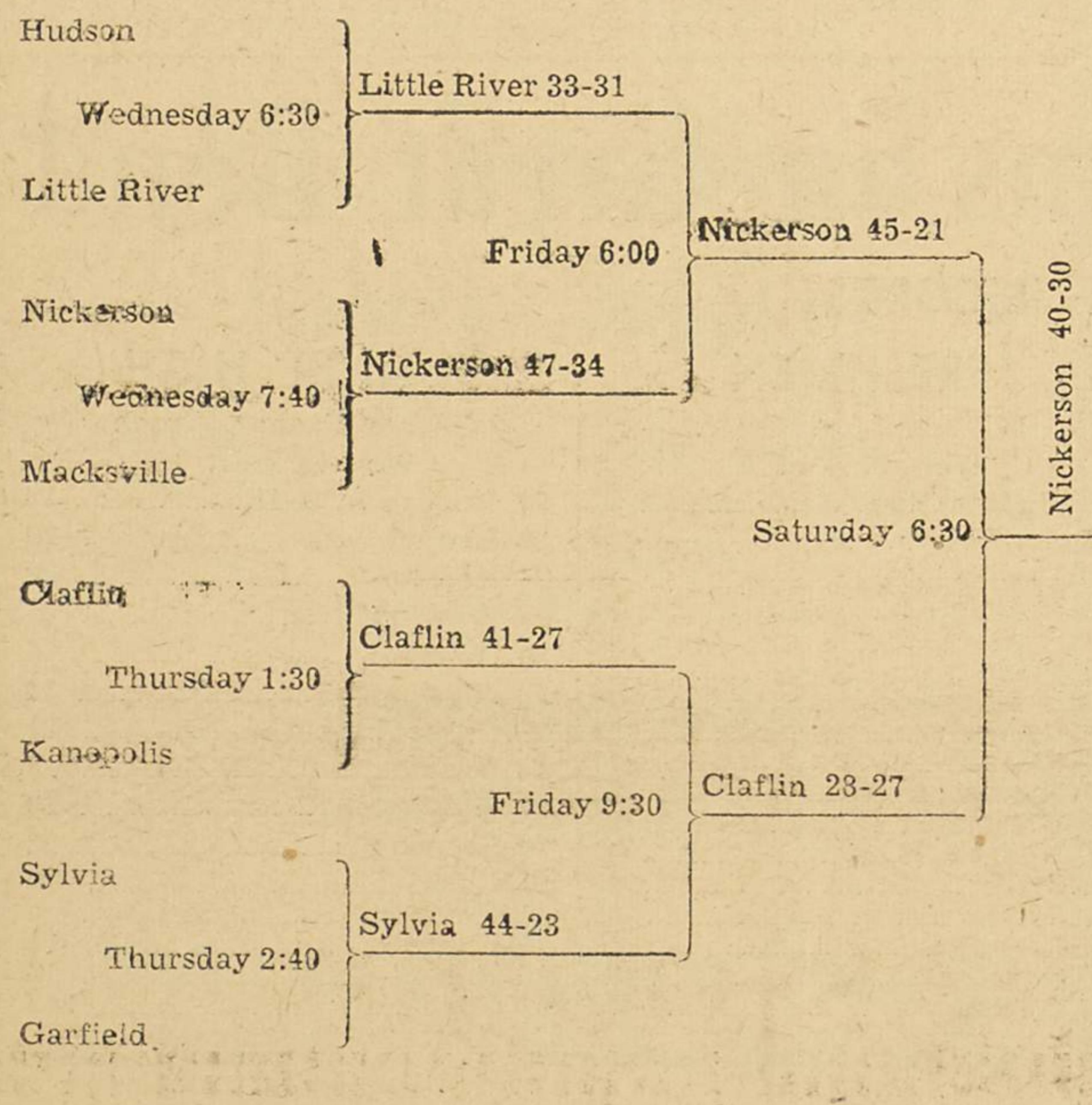
Although Hoisington took the lead from the start and were never headed, they fought for every point and the game did not develop into the runaway that many expected.

Rick Harman was high with 18 points, with team-mates Ford and Deutsch chipping in with 6 each. Streck, who made 7 of 9 attempts Wednesday, drew a blank. Wyatt and Ross bore the brunt of the Bears attack.

The running score:

Hoisington	Sterling
Boldenow 1-0	Newman f 1-0
Deutsch 3-0	Newman f 3-0
Boldenow 4-0	Yeakel f 4-0
Boldenow 5-0	Hammer f 5-0
Ford mft 5-0	Hammer f 5-0
Ford mft 5-0	Hammer f 5-0
Harman mft 6-0	Ross f 6-0
Harman 8-0	Wyatt f 8-0
Ford 10-0	Wyatt f 10-0
Ford f 10-1	Newman mft 10-1
Streck 11-1	McFarland f 11-1
Harman f 11-1	Wyatt mft 11-1
Deutsch 11-3	Hammer 11-3
Harman 13-3	Hammer 13-3
Ford 15-3	Hammer 15-3
Ford 17-3	Hammer 17-3
Boldenow f 17-4	Yeakel 17-4
Ford 17-6	Newman 17-6
Ford 19-6	Newman 19-6
Third Quarter	Wyatt 19-8

## CLASS B BRACKET



## CROP PROSPECTS UP IN SOUTHWEST

•Crop conditions have greatly improved in the southwest part of the state, where wind storms were making serious inroads and giving rise to reports that the so-called "dust bowl" was on its way back. Crop prospects are now favorable, further supported by the fact that a tremendous acreage of summer fallow wheat is more than promising. The moisture extended well to the east and south, and since the eastern portion of the state has had an adequate supply all winter, soil conditions are excellent. Probably 50 per cent of the oats crop has been planted, and preparations for other crops are underway. Only the northwest is deficient in moisture at this time, although other western sections will soon need more to maintain the present crop outlook.