


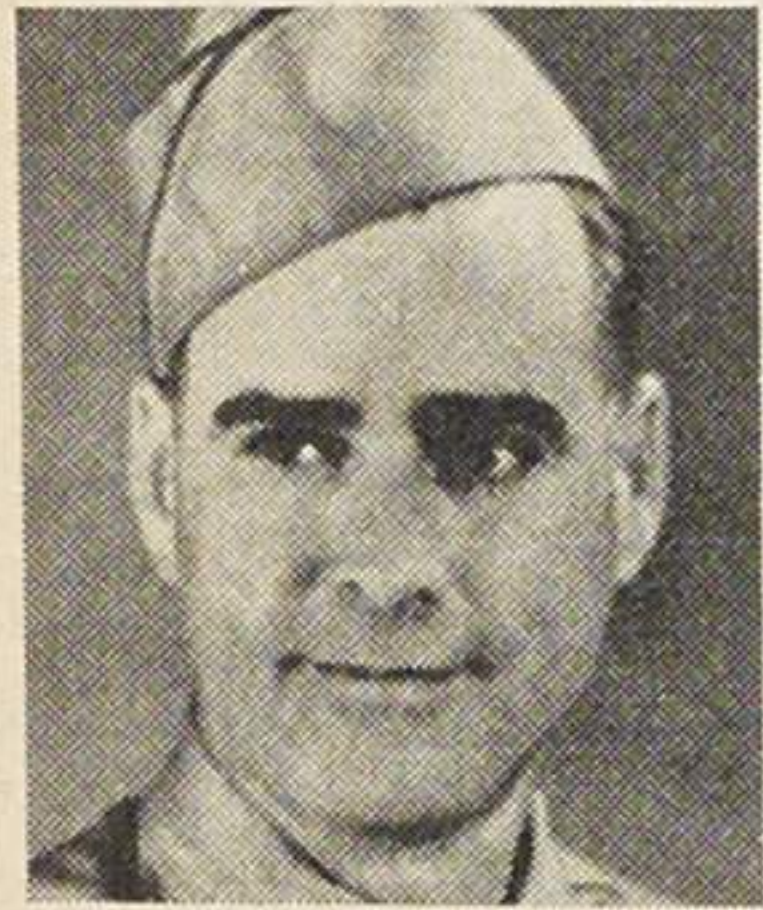
SOMETHING from THE BOYS



The Air Medal and two Oak Leaf Clusters were awarded to **S/Sgt. Emmett Shuck**, stationed in England with the Eighth Air Force. This former assistant foreman of Shop 540 recently enjoyed a "recess" from aerial warfare at an Air Service Command rest center. . . . **Edward Sisk S 1/c**, formerly in Department 75, has been in New Guinea nine months. He is the son of Thelma Sisk (405). . . . **Pvt. Ray C. Rovenstine**, formerly assistant foreman of Shop 405, and **Pvt. Wilbert M. Karlowski**, milling machine operator in Shop 120, are stationed at Camp Wolters, Tex.



Edward Sisk



Jack D. DeVault

E. V. Davis CMM, member of the Seabees, has returned from the Pacific theater and is stationed at Port Hueneme, Calif. . . . **Pfc. Jack D. DeVault**, stock clerk in Shop 47 from July, 1941, to February, 1943, is now somewhere in France. . . . "Winning balance of power" is the way



William B. Estill

Pvt. Garwin D. Thomas, gas test technician for two years in Shop 365, describes the B-29. He is stationed at Clovis, N. M. . . . **Sgt. William L. Pipes**, waist gunner and aircraft armorer on a B-17, is engaged in bombing German defenses. The sergeant was an inspector here. . . . **H. Dale Hampton ARM 3/c**, junior weight recorder in Department 71 for a year, is with a carrier aircraft service unit. . . . After training at Fort Leavenworth, **Cpl. William B. Estill**, former draftsman in Department 92, was sent overseas as an electrical expert on the superchargers of heavy bombers. . . . An eager follower of the B-29's career is **Cpl. Reuben Haas**, benchman in Shop 60 for over a year, now stationed with the AAF in Italy. **S/Sgt. Ronald Zimelman**, a former riveter in Department 55, is also overseas. . . . The one-time assistant foreman of Shop 100, **Robert C. Wilburn, F 2/c**, was transferred recently to Terminal Island, San Pedro, Calif.



Glenn Herrel

Sgt. Richard A. Brady who was an assembler and finisher in Department 58 is a member of the Marine Corps. **Glenn Herrel AM 1/c**, employed in October, 1941, as a riveter in Shop 42, is now serving overseas. He is the son of Mazie A. Herrel (89) and nephew of George Bond (226). . . . **Cpl. Alfred V. Collins**, former employee of Shop 266, has been flying in B-17's as part of his gunnery instructor's course at Laredo, Tex.



Frank L. Best

Dallas Earl Crim, 2/c, is serving on the USS Parle. He was an assembly finisher in Shop 21. . . . **Lt. (j.g.) Frank L. Best**, engineer in the Navy Air Corps, has been in Australia for the past 16 months. He was employed in June, 1941, in Inspection, Plant I, and was an Inspection foreman in the Salvage department when he left here, March 6, 1943. Art Best (500-2) is his brother. **Pvt. Johnnie Moore**, who left here last February to join the Marines, was recently home on leave, told his friends at Boeing he expected to see plenty of action before long. At the time he left Boeing, Johnnie was supervisor of sup-

plies, printing and communications in the Treasury division. He worked here four years.

Pvt. Carl K. Holt, assembler of sheet metal in Shop 245 for almost three years, and **Pvt. Paul Fletcher**, a shaper operator in Shop 102 for two years, were graduated from the Armament department at Lowry Field, Denver, in September. . . . **Everett Raymond Sanders, F 1/c**, riveter in Department 58 from January to August in 1942, is a member of the Navy Air Corps.



Everett R. Sanders

Hershel Russell, Jr., AMM 3/c, former saw grinder in Shop 60, and **George S. Handy AM 2/c**, brake operator for over a year, are overseas in the Navy. . . .



Lyle W. Massey

Pfc. Lyle W. Massey, former Receiving employee, is now in France working on the railroad. . . . **Glen Lightfoot, Jr. S 1/c**, son of C. Glenn Lightfoot (60), is serving with the armed guard center in the Pacific. Beginning as a trainee in Shop 510 in October of 1943, he was a sheet metal worker at the time of his termination in February of this year. . . . **Pfc. Glenn H. Conine**, who worked at Plant I during his high school summer vacation in 1943, was inducted into the Marines in December, went overseas in April and has seen action in the Pacific. He is the son of Ruth H. Conine (22).



Virgil K. Lacey

Joseph L. Higgins (40) and **Lola V. Higgins (200)** are proud of their son, **Kenneth L. Higgins**, a former employee in Department 38, who is now serving on the Coast Guard cutter, S. S. Campbell, somewhere in the Atlantic. Kenneth has five brothers, two brothers-in-law, and five uncles serving in the Armed Forces. . . . **Paul H. Polage F 1/c** is also a member of the Coast Guard. He, too, was a riveter in Department 38. . . . **Virgil K. Lacey S 2/c**, former sheet metal assembler in Shop 8, is somewhere in the Pacific, serving aboard the USS Black.

A pair of Boeing twins are in the service, one in the Army and one in the Navy. **Everett Lickey MM 3/c**, former stock clerk in Shop 47, enlisted in the Navy and is serving in the Solomon Islands while his twin, **Pvt. Ernest Lickey**, one-time jig builder in Shop 67, enlisted in the Army. Ernest was wounded October 20, according to word received by his parents. . . . **Pvt. Gerald E. Ryun**, saw operator in Shop 120, is stationed with a medical outfit at Camp Berkeley, Tex. . . . **Sgt. Donald E. Knott**, employed as expeditor from January, 1941, to January, 1943, was a combat gunner on a B-25 Mitchell bomber with the 12th Air Force which gave air support in the invasion of Southern France.



Ernest Lickey

S/Sgt. Mahlon Morley, former employee in Receiving, has been awarded the Air Medal and one Oak Leaf Cluster for "meritorious achievement while participating in sustained bomber combat operations over Germany and German occupied countries." He is an aerial engineer on a Boeing B-17 and is stationed in England. Sergeant Morley is a brother of Twila Horkman (93).

Could Be the Night Before Christmas



BUT THE FIREPLACE ISN'T DECORATED. It hardly needs decoration, however, with the lovely old teapot in front of it. The antique piece of pottery is interesting and adds to the appearance of the fireplace. And INCIDENTALLY, the girl in the picture is Georgena Brannon, Boeing beauty queen for 1944. An illustrator in the Production department, she's keenly interested in Art—he's overseas with the Navy these days

SPECIFICATION CHART

(Index to strategic materials listed in this issue)

Part Number	Location	Color Code		Dimensions			
		Eyes	Hair	Height	Bust	W'st	Hips Wt.
Maxine Burnett	343 N. Holyoke	brown	brunette	5'2"	34	26	36 125
Verres Everts	1509 W. Douglas	blue	brunette	5'2"	34	23	34 105
Betty Sitton	314 N. Broadway, Apt. 12	blue	brunette	5'6"	33	24	35 123
LaVerne McGahan	2956 S. Clifton	blue	blonde	5'5"	33	26	35 118
Bettee Bell	2643 Grall	green	titian	5'5"	34	25	35 125
Joan Wharton	2877 S. Roosevelt	blue	blonde	5'2"	32	24	34 118
Helen Mitchell	Too bad, she's married!						
Mary Ann Breitenbach	227 S. Terrace Drive	brown	black	5'7 1/2"	34	26	36 125
Margaret Egan	1838 Park Place	brown	brunette	5'4 1/2"	34	24	35 122
Dorothy Kaup	403 S. Hydraulic	grey	brunette	5'1"	28	23	31 96
Alva Caudill	343 N. Holyoke	green	brunette	5'3 1/2"	32	24	35 107
Alta Pfaffly	514 N. Topeka, Apt. 8	blue	auburn	5'3 1/2"	34	23	35 111
Betty Kendrick	514 N. Topeka, Apt. 8	blue	brunette	5'2 1/2"	33	22	34 110
Helen Clark	1600 E. Central	blue	brunette	5'7 1/2"	34	26	36 124
Rose Marie Crabtree	302 S. Holyoke	blue	blonde	5'4"	34	25	35 117
Marie Betzen	475 Mathewson Court	brown	brunette	5'3"	33	24	34 108
Katherena Eckert	Belle Plaine	blue	blonde	5'4"	32	24	34 108
Alice Montgomery	420 W. 11th, Winfield	brown	brunette	5'2"	32	24	35 109
Lillian Nigg	Colwich	blue	brunette	5'3"	34	24	35 123
Georgena Brannon	422 S. Volusia	grey	blonde	5'4"	34	23	35 120
Louise Thomas	416 N. Emporia	blue	brunette	5'3 1/2"	34	23	34 113
Lois Nighswonger	300 S. Bluff	green	brunette	5'5 1/2"	33	25	35 110
Gwendolyn Smith	1340 N. Hillside	blue	blonde	5'1"	33	24	34 110
Aileen Anderson	She's married, too!						
Katherine Gillen	1065 N. Topeka	brown	brunette	5'6"	34	25	35 126
Marian Reed	1050 N. Topeka	blue	red	5'5"	34	26	36 128

Since You Went Away

(Continued from Page 2)

Red Cross reach \$131,000. . . . Special twice-a-day news broadcasts inaugurated in plants through radio station KFBI. . . . Boeing Bombshells, undefeated in City league, lose in third round of national women's basketball tourney.

APRIL—One of worst floods in Wichita's history hits city, many employees forced out of homes by high water, scores unable to reach work. . . . Boeing Chorus featured on national radio show. . . . Amazing horsepower of B-29, four engines developing a total of 8,800 horsepower, revealed. . . . Price of milk and coffee increased to 6 cents a serving at all plant food facilities except vending machines. . . . Knudsen again visits plants, declares B-29 most important plane being built. . . . Undersecretary of War Patterson comes to plants, terms B-29 program most important in the nation, Boeing-Wichita's job "most urgent."

MAY—Nearly 100 newspaper, magazine, radio representatives, accompanied by high-ranking Army officers, spent three days at plants in first official B-29 press conference at which the Boeing Superfortress is unveiled for first time. . . . Thousands attend old-fashioned family picnic in Boeing Park. . . . Work halts 10 minutes on both shifts while employees pay tribute to memory of plant's gold star men and nation's war dead. . . . "Spotlight Bands" radio program salutes Boeing-Wichita.

JUNE—May production announced as reaching new high; record praised by President P. G. Johnson on visit here. . . . Employees thrilled by announcement Boeing-Wichita B-29's have made first bombing raid on Japan. . . . Raid causes War Department to release B-29 details to public, results in world-wide publicity for fine work being performed here. . . . Employees exceed \$1,200,000 War Bond goal and "purchase" two B-29's for presentation to Army. . . . Boeing board of directors holds annual Wichita meeting here.

JULY—Production "blitz" hits plants, employees working 20 consecutive 10-hour days to meet emergency requests of Army. . . . Already high attendance mark rises to highest mark in history. . . . New milestone reached with Plant I delivering 10,000th equivalent Kaydet primary trainer. . . . "Gen. H. H. Arnold Special" crew sends back detailed reports on bombing raids on Japan. . . . Employees set all-time high attendance records as demands increase for B-29 production. . . . New Boeing Magazine makes bow. . . . The "Eddie Allen" and the "293," B-29's purchased by employees with War Bonds, dedicated at ceremonies attended by thousands on Plant II flight apron.

AUGUST—Army highly pleased at our attainment of B-29 production goal for July. . . . Visit in July of Maj. Gen. Curtis LeMay, new chief of the 20th Bomber Command (B-29's) in CBI theater, revealed. . . . Elmer Blanchat (50), Cecil Barlow (71), and H. B. Courtney (50), receive 10-year service pins; 47 others get 5-year pins. . . . 10,000th PT produced at Plant I is reported in service at Chickasha, Okla., Army air base.

SEPTEMBER—Wichita downtown stores display Boeing B-29 parts and equipment with theme "Japan is our assignment." . . . Employees Association rodeo draws record crowds at Lawrence Stadium. . . . Formerly restricted, information is released on B-29 fire power. . . . Philip G. Johnson, Boeing president, dies in Wichita hospital following stroke suffered during visit here. . . . Cigarette shortage begins to be felt in plants. . . . Newsreel cameramen make first movie shots in Plant II.

OCTOBER—An estimated 50,000 people visit both plants at big Sunday open house. . . . General Wolfe commends us for bearing brunt of B-29 spares program. . . . Further combat reports received from "General Arnold Special." . . . Union contract is renewed; the first year of union agreement offering a splendid testimonial to understanding and cooperation between labor and management—friendly relations and no loss of time in disputes. . . . Boeing-Wichita receives new order for B-29's, latest numbering 700 Superfortresses. . . . Wichita Forum jammed as Vox Pop radio program is broadcast nationally as a salute to men and women of Boeing; five Boeing employees participate in show as do 11 Army airmen forming first B-29 combat crew to return to U. S. . . . Employee contributions to Wichita Community-War Chest exceed \$105,000.

NOVEMBER—Combat crew of Boeing B-29 "Mysterious Mistress" spends day at plants, praises Superfortress and efforts of employees to turn them out in great numbers. . . . New Clubhouse in Boeing Park completed. . . . Employees win fifth Army-Navy "E" Award. . . . Boeing employment office moved from downtown location back to plants, shift denoting no cessation in hiring program. . . . Acute shortage of cigarets results in decision to remove vending machines—impossible to make an equitable distribution of the meager supply received. . . . Group of newsmen from War Department in Washington visits plants for press conference and to view B-29 production. . . . Thanksgiving announced as full work day. . . . New clubhouse completed in Boeing Park. . . . Gradual increase in B-29 production schedules started.