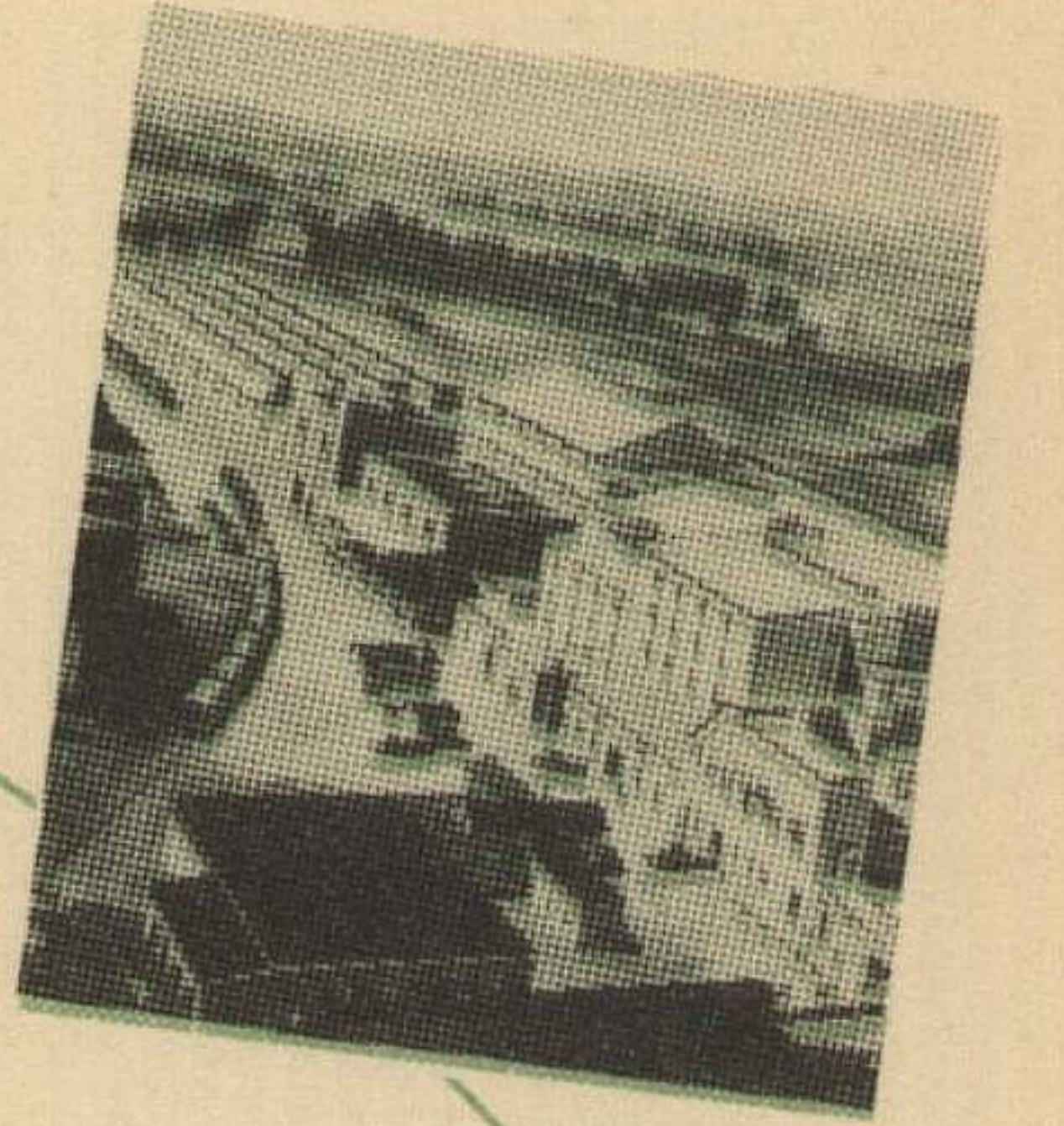


CITY DRUG STORE

LESTER R. BUELL

PHONE 12

NICKERSON, KANSAS



KANSAS has vast resources in oil, natural gas and coal KANSAS salt seasons the food of the world . . . KANSAS taxes are LOW . . . KANSAS government is safe and sane . . . KANSAS workers are efficient and intelligent . . . KANSAS industries are ON THE MARCH.

Dr. Allen we have one real foot ball player here. This boy is one of the best passers this part of the country has ever produced. I dont know who to contact concerning this, but have taken the liberty to enclose a clipping about him and sure would appreciate it if it was turned over to the right party. He wishes to go to K.U.

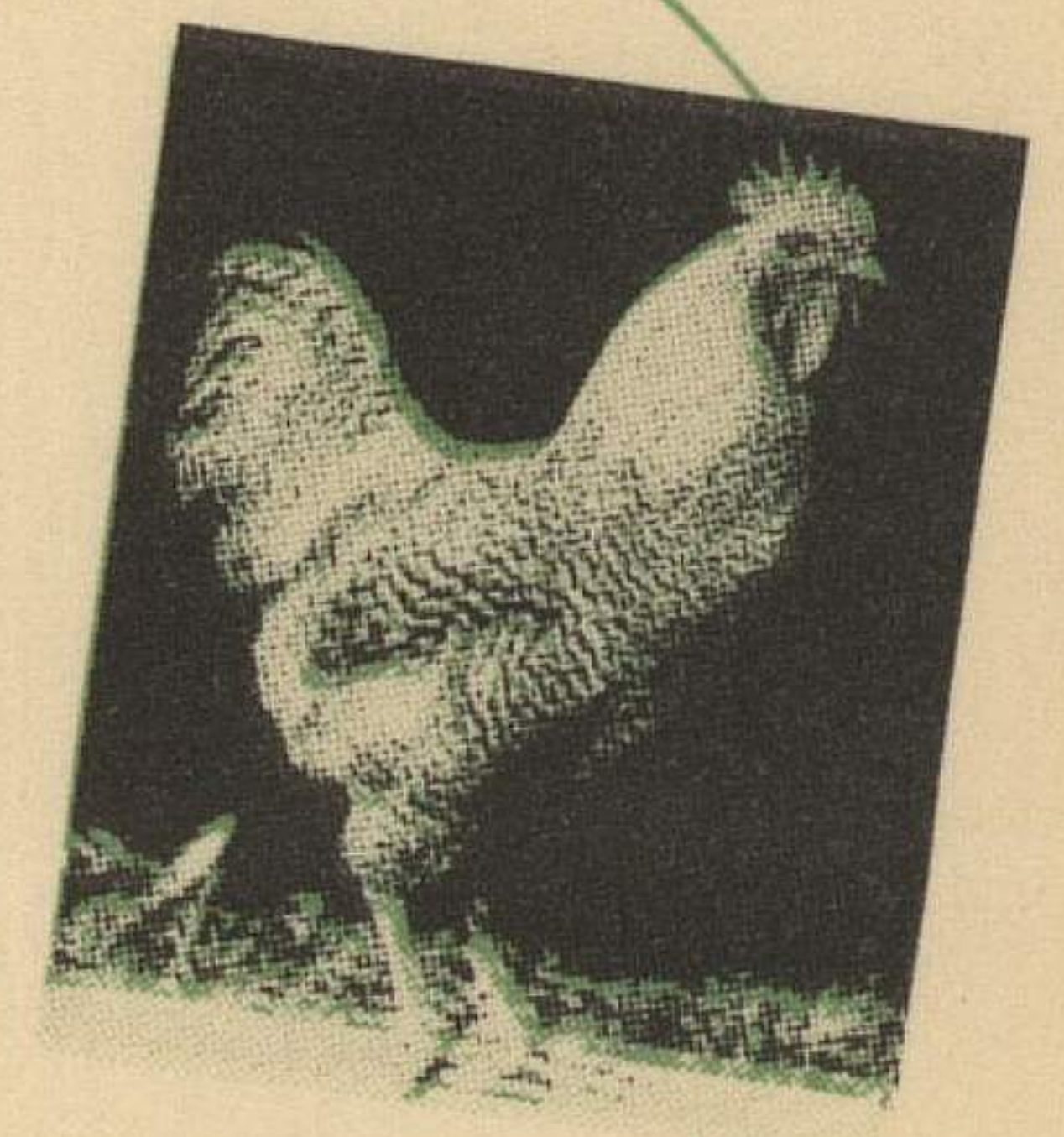
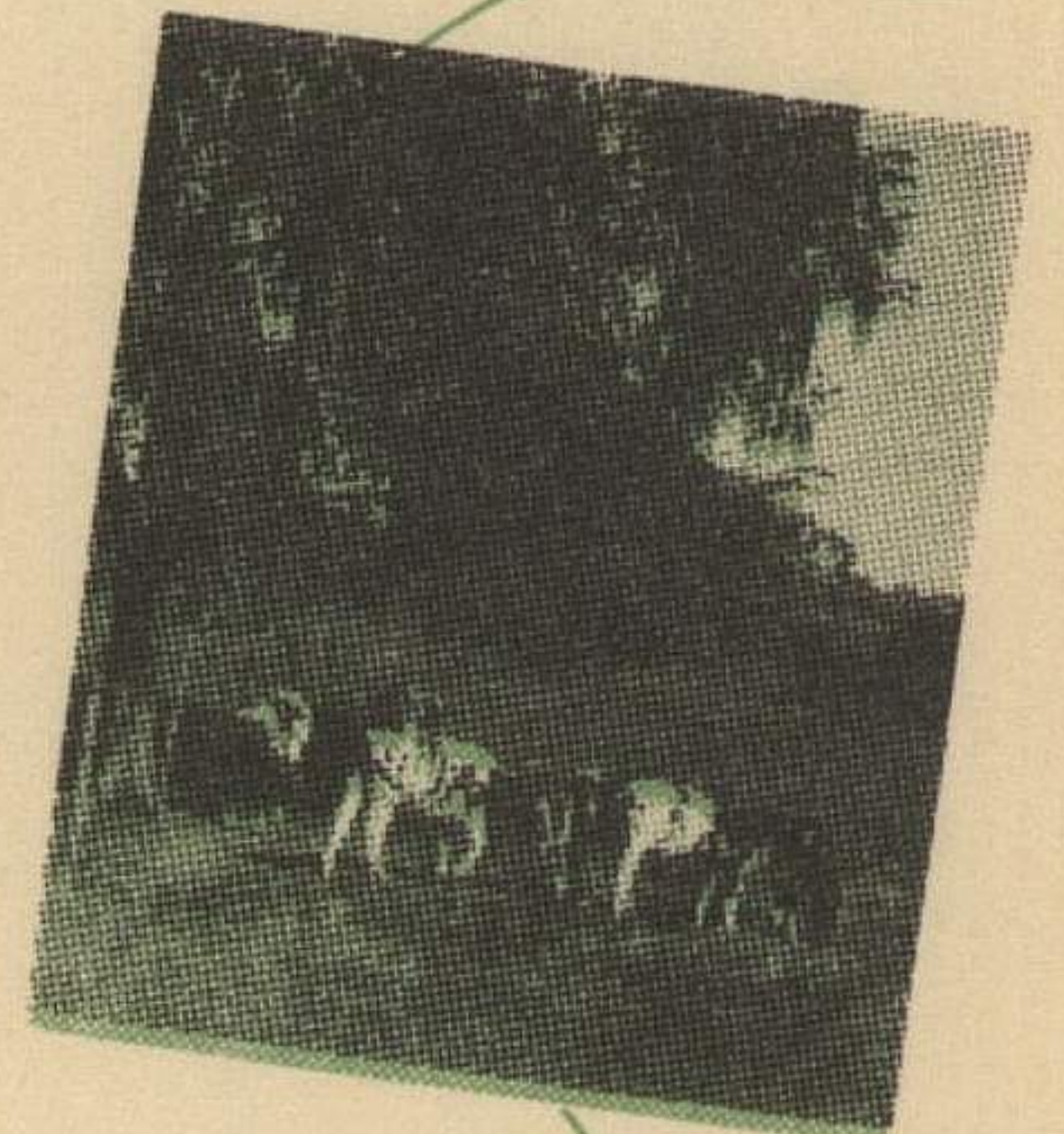
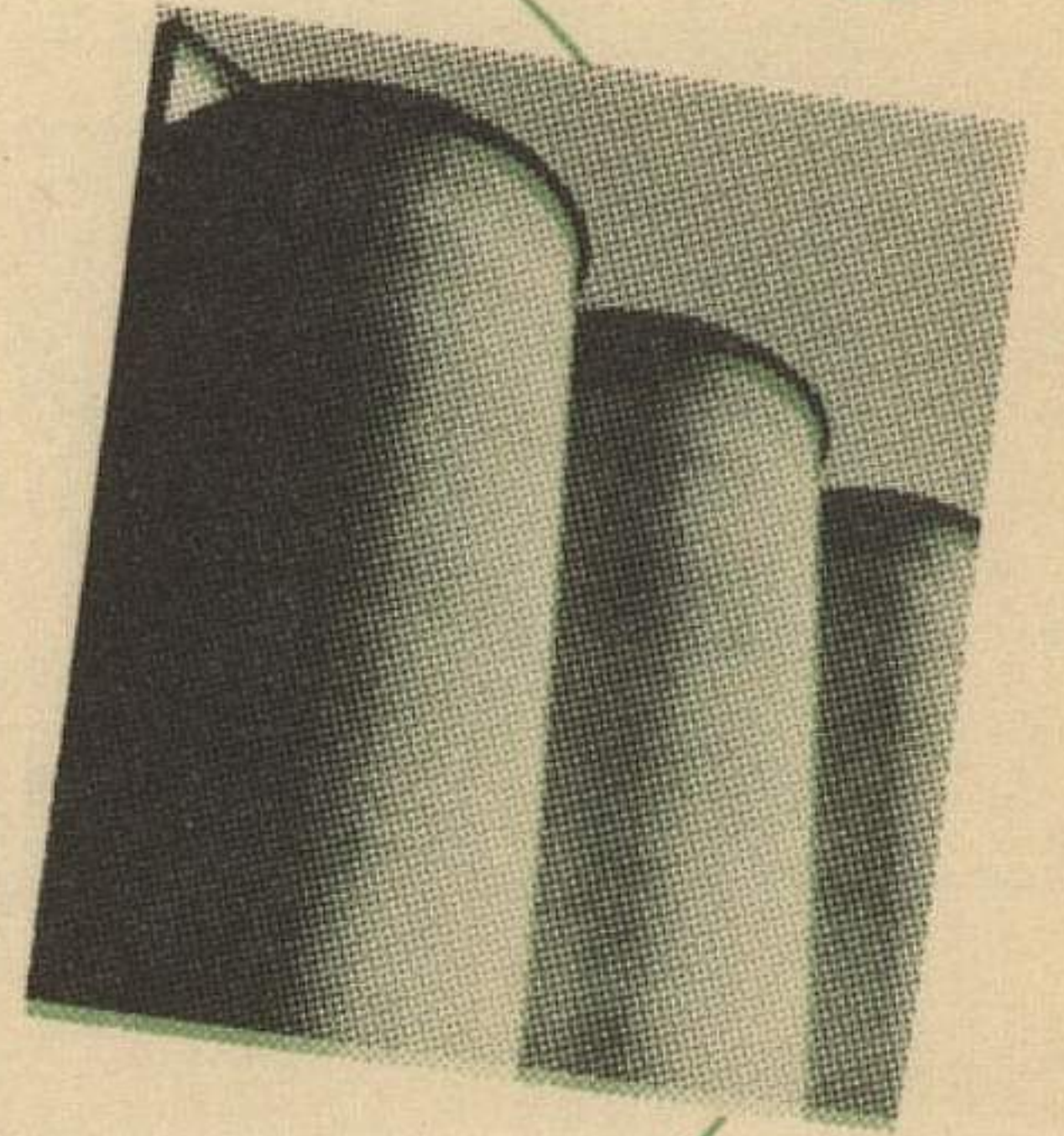
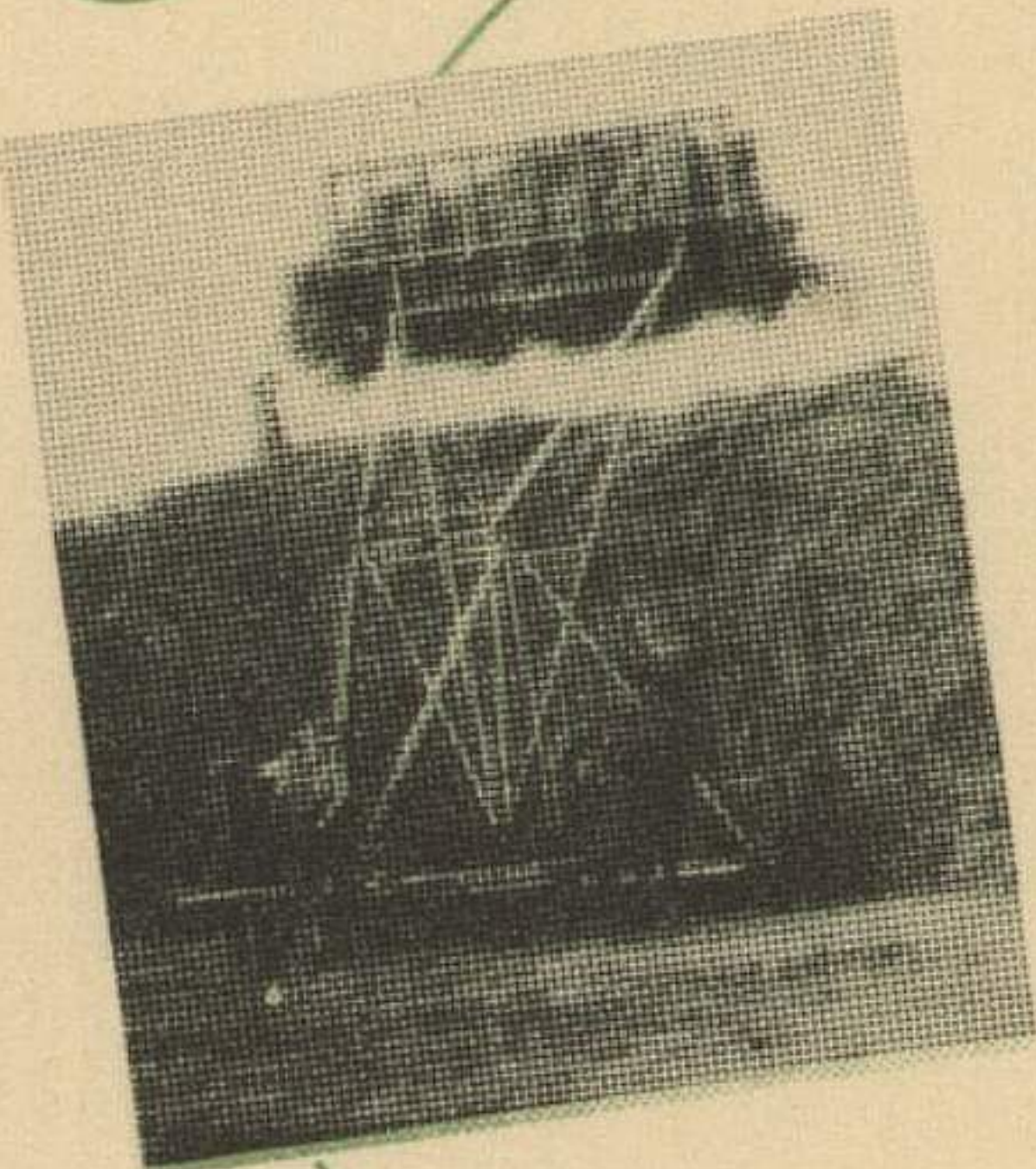
KANSAS harvests 160 MILLION bushels of the world's BEST wheat annually . . . Twice as much as any other state in the Union . . . KANSAS farm income alone is a third of a BILLION dollars each year . . . KANSAS livestock, dairy and poultry products top the markets.

Please dont think I am begging too many jobs for players, but I have followed sports for several years and I believe I know these boys will make you proud in a couple years.

I have read where you was to make a talk at the Banquet honoring the teams from Reno County. We are just 10 miles from Hutchinson and I certainly would like for you to arrange a little side trip here and we could discuss these boys further,

Respectfully,
L.R. Buell

The ideal of these boys being together seems to help some and it seems the ever wish of the fans here that they could all go to K.U.



NICKERSON—Splendid Schools. . . Low Taxes. . . Low Utility Rates. . . A FRIENDLY community in the heart of the Kansas Wheat Belt and Oil development. KANSAS raises the best wheat in the world—Reno County raises the best wheat in Kansas.

