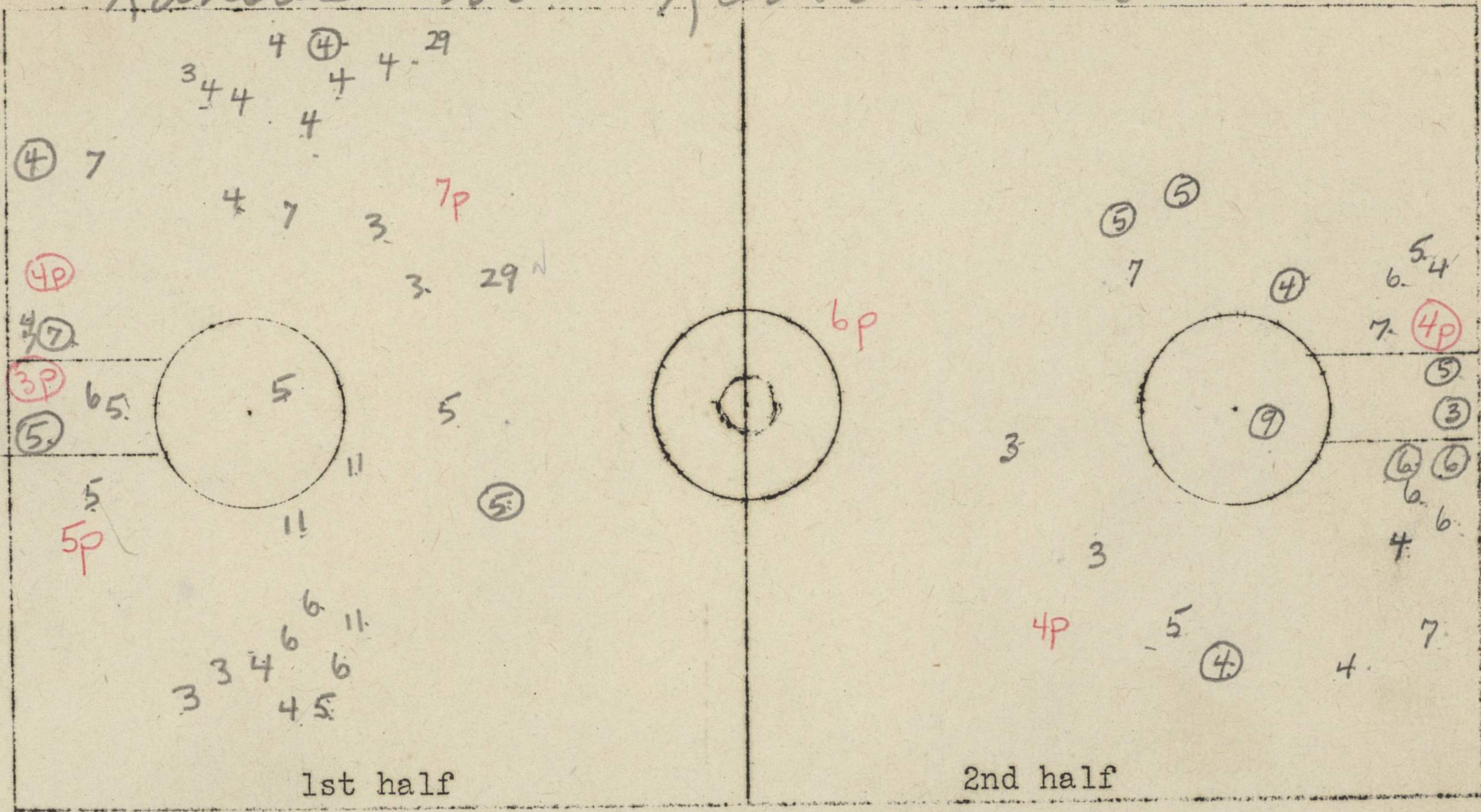


Kansas vs Kansas State



1. Number of jump balls in center circle. 1st Half _____ Second _____.
2. Number of jump balls in free-throw circles. 1st Half _____ 2nd _____.
3. Number of center jumps _____.
4. Number of fouls resulting in multiple throw _____.
5. Number of times ball out of bounds at end of court _____.
6. Would it have gone out if goals were set in 4 ft. _____.
7. Would it have gone out if goals were set in 6 ft. _____.
8. Number of times out of bounds as result of personal foul. 1st _____ 2nd _____.
9. Number of violations of 3 second rule. _____.
10. Number of times forced back over division line _____.
11. Number of times failed to bring ball over division line. _____.

Team	Kansas	
Lineup		No.
Holliday		7
Schmidt		29
Rogers		4
Lutton		14
Stellhousen		3
Koppleman		12
Noble		6
Corliss		9
Pralle		5
Steedman		13

	1st half	2nd half	
Number of field goals attempted.	37	22-59	} 23-10+
Successful attempts.	5	9-14	
Number of free throws attempted.	8	6	
Successful attempts.	7	4	

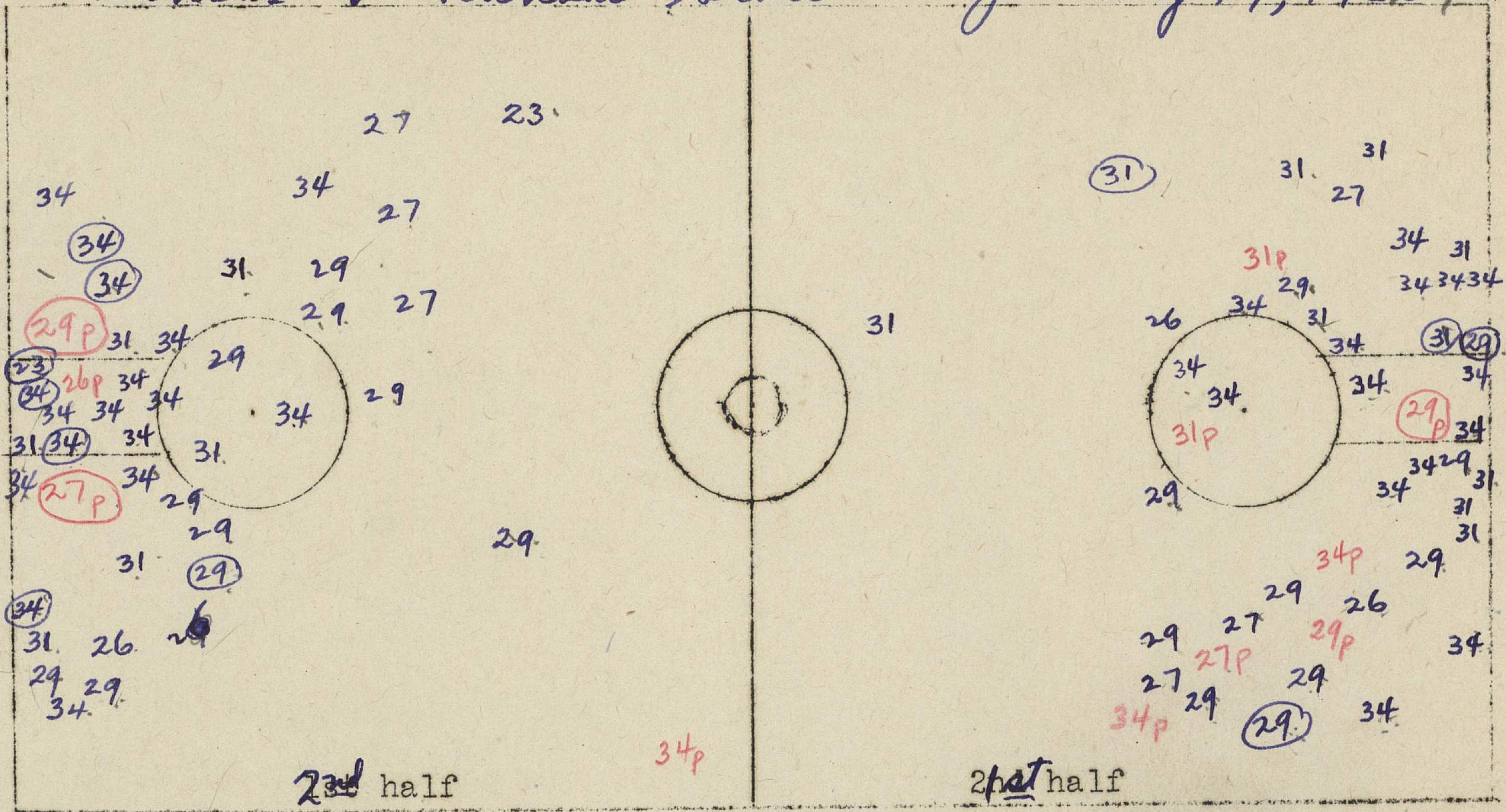
Mark on court chart location where player attempts field goal.

Mark number of player and, if attempt is successful, draw a circle around the number. 25

Mark location of all personal fouls by p and by the number of man making foul-22p. If resulting in multiple throw, put circle around it-22p.

Fuggit 55

Kansas v Kansas State January 19, 1936



1. Number of jump balls in center circle. 1st Half _____ Second _____
2. Number of jump balls in free-throw circles. 1st Half _____ 2nd _____
3. Number of center jumps _____
4. Number of fouls resulting in multiple throw 6
5. Number of times ball out of bounds at end of court 8
6. Would it have gone out if goals were set in 4 ft. 5
7. Would it have gone out if goals were set in 6 ft. 3
8. Number of times out of bounds as result of personal foul. 1st 5 2nd 1
9. Number of violations of 3 second rule. 1
10. Number of times forced back over division line _____
11. Number of times failed to bring ball over division line. _____

Team <u>Kansas State</u>	No.
<u>Klimek</u>	<u>29</u>
<u>Kramer</u>	<u>23</u>
<u>Wesche</u>	<u>31</u>
<u>Groves</u>	<u>34</u>
<u>Cleveland</u>	<u>27</u>
<u>Killogg</u>	<u>30</u>
<u>Schierling</u>	<u>26</u>

	1st half	2nd half	
Number of field goals attempted.	<u>40</u>	<u>40</u>	} 130%
Successful attempts.	<u>4</u>	<u>7</u>	
Number of free throws attempted.	<u>4</u>	<u>6</u>	
Successful attempts.	<u>2</u>	<u>4</u>	

Mark on court chart location where player attempts field goal.
 Mark number of player and, if attempt is successful, draw a circle around the number. 25
 Mark location of all personal fouls by p and by the number of man making foul-22p.
 If resulting in multiple throw, put circle around it-22p.

Official Box Kansas Kansas State Jn. 19

	G	FT	MFT	PF	Kansas State	G	FT	MFT	PF
Holliday, f	1	1		1					
Rogers, f	4	3	1	3	Klimek, f	3	2		3
Wellhausen, c	1			1	Wesche, f	1			2
Pralle, g	5	3	1	1	Groves, vc	6	2	2	3
Noble, g	2	3	0	1	Cleveland, g		2	2	
Schmidt, f		1			Schierlmann, g				1
Durand, g					Kramer, f	1			
Kappelman, f					Kellogg, g				
Weidner, c						11	6	4	9
Lutton, c									
Corliss, f	1								
	14	11	2	7					

Officials-- E C Quigley, st. Maries and Gene Johnson, McPherson

For Information of Basketball Coach---

not available,

(Note---Minutes played in first Southwestern, so computation is on basis of points scored in five other non-conference games.)

Player	Ttl Pts	Pts <u>5 gms</u>	Mins. pld	Points per min.
Schmidt	8	8	25.5	.313
Durand	18	17	64.	.265
Golay	33	26	112	.232
Rogers	18	18	81.5	.221
Pralle	43	36	165	.218
Holliday	20	19	119.5	.159
XXXXX Corlis	13	13	89.5	.145
Noble	30	24	171	.140
Wellhausen	6	6	75	.080
Lutton	1	1	57.5	.017
Totals	<u>190</u>	<u>168</u>	<u>960.5</u>	
Non-scoring players			<u>64.5</u>	
Total possible player- minutes			1025	
Team average164

For Information of Basketball Coach---

not available,

(Note---Minutes played in first Southwestern, so computation is on basis of points scored in five other non-conference games.)

Player	Ttl Pts	Pts <u>5 gms</u>	Mins. pld	Points per min.
Schmidt	8	8	25.5	.313
Durand	18	17	64.	.265
Gelay	33	26	112	.232
Rogers	18	18	81.5	.221
Pralle	43	36	165	.218
Holliday	20	19	119.5	.159
Erma Corlis	13	13	89.5	.145
Noble	30	24	171	.140
Wellhausen	6	6	75	.080
Lutton	<u>1</u>	<u>1</u>	<u>57.5</u>	.017
Totals	190	168	960.5	
Non-scoring players			<u>64.5</u>	
Total possible player- minutes			1025	
Team average164

Individual Scoring --Kansas Basketball, 1937.

Player	Games	Goals	--Free Throws--		Total Pts	Personal Fouls	Av. Pts	
			Made	Missed				
Pralle, g	6	16	11	11	.500	43	9	7.16 5.5
Golay, f	6	12	9	4	.692	33	10	5.5 5.5
Noble, g, c, f	6	12	6	1	.857	30	8	5.00
Holliday, c	6	7	6	6	.500	20	11	3.33
Rogers, g	5	7	4	0	1.000	18	3	3.6
Durand, f	4	6	6	0	1.000	18	1	4.5
Corlis, g, f	6	6	3	4	.430	13	3	2.16
Wellhausen, c	4	3	0	1	.000	6	0	1.5
Schmidt, f	3	3	2	0	1.000	8	0	2.67
Lutton, g	5	0	1	2	.333	1	2	.2
Cox, f	3	0	0	1	.000	0	1	
Weidner, g	3	0	0	0	---	0	2	
Bosilevac, f	3	0	0	0	---	0	0	
Fugitt, g	1	0	0	0	---	0	0	
Hoverstock, g	1	0	0	1	.000	0	1	
Keppelman, f, g	1	0	0	0	---	0	0	
Totals		71	48	31	.608	190	51	

K. U. NEWS BUREAU SPORTS SERVICE—BASKETBALL

KANSAS vs.

Baker

DATE

Jan. 5, 1936

First

HALF

7 Holliday f

10 Bosilevac f

3 Wellhausen

6 Noble g

5 Pralle g

11 Swand

8 Golay

4 Rogers

Baker

55 Beiser f

60 Quear f

57 Heine c

68 Rudolph g

56 Schrey g

0

X
3

]]

]]

X

X

[]

P

X

[]

P

[]

P

P P

46
XX

9

14
X

0

X

X

10 12
X

16
X

K. U. NEWS BUREAU SPORTS SERVICE—BASKET

KANSAS vs.

Baker

DATE

11 Durand f

8 Golay f

4 Rogers c

6 Noble g

5 Pralle g

9 Corlis

7 Halliday

29 Schmitt f

*11 X
13 X*

]

*[16
10*

]

*28
0*

P

*15
X*

0

*18
0*

*19
X*

*21
X*

*25
X*

[

]

[

*P 23
X*

*P 20
0*

[

Baker

55 Beiser, f

60 Quaer, f

57 Heine, c

68 Rudolph, g

56 Schrey, g

p

*18
X*

*26
X*

*32
0*

p

p

*31
X*

*20
X
22
X*

*24
X*

*28
X*

p

*29
0*

pp

K.U. NEWS BUREAU SPORTS SERVICE

Kansas-Baker, at Lawrence, Jan. 5, 1937.

Kansas	G	FT	MFT	PF	Bakerr	G	FT	MFT	PF
Holliday, f			1	2	Beiser, f	5	2	0	3
Bosilevac, f					Quaer f				2
Wellhausen, c					Heine, c	3		1	
Noble, g	2			1	Rudolph g	2	2		2
Pralle, g	5	2	2	1	Schrey, g	4	2		3
Durand, f	1					13	6	1	8
Golay, f	1	1	1	2					
Rogers, c	1	1							
Corlis, f		0	0	0					
Schmidt f	1	2	1						
Totals	22 11	5	4	6					

